



Surface Finishing Tools & Accessories



**GRINDING
SANDING
POLISHING
DEBURRING
BEVELING**

High-performance Tools for
Finishing Stainless Steel, Steel,
Nonferrous Metals and Wood

 **UNITEC**

ELECTRIC • PNEUMATIC • HYDRAULIC
... the power of innovation!

UNITEC Surface Finishing Tools & Accessories

The value is in the engineering... the payback is in the performance.™

CS Unitec offers professional power tools and abrasive accessories for surface finishing on **STEEL, STAINLESS STEEL, ALUMINUM** and other metals, as well as rigid plastics and wood.

Innovation is the engine of efficiency!™

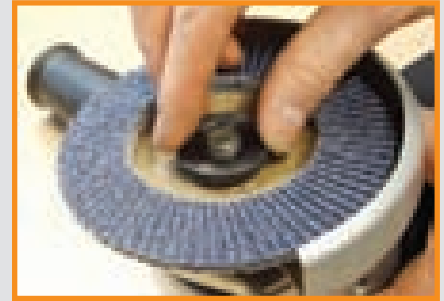
Innovations in machine design, abrasive materials and production methods have led the way to:



Hollow-core abrasives for linear grinding

The PTX Eco Smart is a surface finishing machine with a finned shaft for quick abrasive changing – simply slide on the abrasives and they secure automatically. This saves time and the abrasive wheels cost less. (Patented!)

Belts with buttonhole fastening system for grinding and polishing closed pipe constructions. (Patented!)

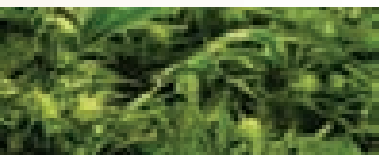


5/8"-11 SPEED NUT changeover

The **EASYLOCK SPEED NUT** allows you to change flap discs in seconds, without tools. It is easily hand tightened and eliminates the need for wrenches or expensive hubs. (Patented!)

Important advancements in flap disc technology

- PLANTEX® high-tech hemp fiber compound (Patented!)
- POLY-MAGIC-WHEEL for dry polishing inside corners
- MAGNUM® FLEECE TOP for surface conditioning, fine finishing and polishing



Hemp fiber is an almost ideal base material for backing plates of flap discs... and it is a renewable resource!

Safer and more efficient!

CS Unitec is the source for flap discs and abrasives that are free of fiberglass, mineral fibers and epoxy resin. They offer superior material removal, longer service life and smoother ergonomic handling.

Better for the environment!

The fiber in the high-tech PLANTEX® compound is derived from the hemp plant – a sustainable raw material which counteracts greenhouse emissions as it grows. The PTX hollow-core abrasives not only improve production efficiencies, but also minimize pollution from production to waste disposal... no plastic insert!



Better for your bottom line!

In addition to their time-saving features and high quality, flap discs and abrasives from CS Unitec can save you money – their cost of production is lower, their quality is among the best and they offer superior service life. Hollow-core abrasive wheels from CS Unitec are more affordable than traditional solid-core abrasives since they can be produced from less raw material. These new hollow-core abrasive wheels can also be used on traditional finishing machines with the aid of a simple core adapter (see page 5).



View product demonstrations at www.csunitec.com.

Surface Finishing Tools and Abrasives Index:

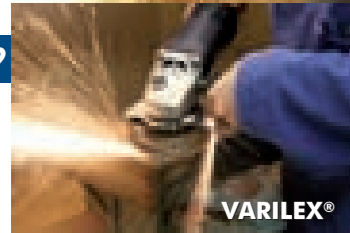
Surface Finishers		p. 4-11
PTX Eco Smart – electric		p. 4-5
LP 1503 AIR – pneumatic		p. 6
Abrasives, Belts, Brushes, Grinding Wheels, etc.		p. 7-11
Multipurpose Grinders		p. 12-13
MULTI-MAX Stationary Multipurpose Grinder		p. 12-13
Flexible Shaft - flexible drive shaft for use with VARILEX and MULTI-MAX		p. 13
All-in-One Angle Grinder/Finishing, Blending & Polishing Machine		p. 14-15
VARILEX® Speed-controlled Grinder/Finisher/Polisher – 4" to 7" diameter		p. 14-15
Flap Discs, Blending, Finishing and Reduced Sparking Discs		p. 16-29
PLANTEX® – for grinding steel and stainless steel		p. 18-20
PLANTEX® COOL TOP – for grinding stainless steel		p. 21
POLY-MAGIC-WHEEL – for dry polishing in corners		p. 22
TIGER SHARK-PLANTEX® – for grinding aluminum		p. 23
MAGNUM® TOPMIX – for increased material removal		p. 24
MAGNUM® FLEECE – for conditioning, finishing and polishing		p. 24
MAGNUM® CLEAN – for pore-deep cleaning of metals		p. 25
FIX HOOK & LOOP SYSTEM – elastic backing disc for finishing		p. 26-27
EB Diamond Grinding and Cutting Discs – for reduced sparking		p. 28-29
Pipe Sanders		p. 30-31
PIPE-MAX – weld seam grinder and pipe sander		p. 30
BOA LRP 1503 – for polishing handrails, pipe and tubing; electric or pneumatic		p. 31
Angle Grinders, Sanders and Polishers		p. 32-36
LBS 1105 VE – finger belt sander for angles, corners, pipes and curves		p. 32
Angle Grinders, Sanders – air and electric/dust extraction		p. 33-35
Low-speed Electric Polishers		p. 36
Trelawny™ Surface Preparation Equipment		p. 37
Air and electric tools for preparation of concrete, steel and stone		p. 37
Deburring, Beveling and Faceting Machines		p. 38-43
Sheet Metal Deburring, Beveling and Faceting Machines		p. 38-41
Portable Beveling Machines		p. 42-43



PTX ECO SMART



PLANTEX®



VARILEX®



FIX HOOK & LOOP



BOA PIPE SANDER



ANGLE GRINDERS WITH DUST EXTRACTION



DEBURRING/BEVELING

Safety Guidelines

Use all products according to the safety regulations of OSHA and directives by ANSI (American National Safety Institute) B7.1, European DIN EN 13743 and all other applicable international safety standards.

Warranty

Products of CS Unitec, Inc. are warranted to be free from defects in material and workmanship for one year from date of purchase. This warranty does not apply to normal wear or products which have been abused, misused, modified or repaired by someone other than CS Unitec, Inc. or its Authorized Service Representatives.

If a product proves defective in material or workmanship within one year after purchase, return it to CS Unitec, Inc. or an Authorized Service Center, transportation prepaid. CS Unitec, Inc. will, at its option, repair or replace defective products free of charge.

CS Unitec, Inc.'s sole liability and your exclusive remedy under this warranty is limited to repair or replacement of the defective product. There are no other warranties expressed or implied and CS Unitec, Inc. shall not be liable for incidental, consequential or special damages, or expenses excepting only the cost or expense of repair or replacement as described above.

PTX ECO SMART

The professional surface finisher for hard, continuous use.

A revolution in linear grinding! Simply slide on the abrasives and they secure themselves automatically when the machine turns. Fast and easy!



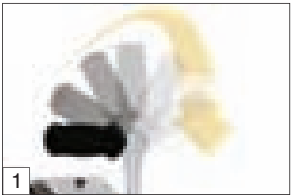
Press the spindle lock and simply slide on the abrasive wheels or brushes, turning in the correct direction onto the finned shaft. They will be secured automatically.



Grinding in corners is easy – simply slide the abrasive wheel on the finned shaft a little towards the outside.



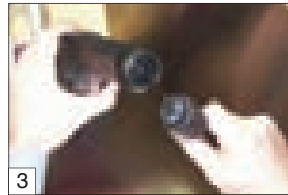
Even narrow abrasive wheels can be used on the PTX Eco Smart and positioned freely on the finned shaft (no spacer rings required).



1 Adjustable handle suitable for right and left-handed users. Anti-vibration handle for comfortable, fatigue-free working.



2 Simple speed control during operation. Stable speed thanks to tachogenerator.

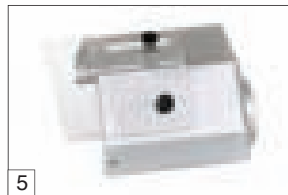


3 QUICK-LOCK cable for fast, easy replacement if cable is damaged. 10 ft., included.

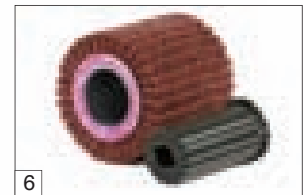


4 Infinitely adjustable cover guard with securing points for the extraction cover.

Part Number: 40005



5 Extended polycarbonate cover guard for grinding wheel widths up to 6". Part Number: 52706



6 Hollow core shaft adapter for roller wheel widths up to 6" and vibration-free operation.

Part Number: 42004

Substantial Cost Savings on Abrasives



PTX Eco Smart
Part Number: 47002A

Now Available: POLY-PTX Accu 28V
The only cordless longitudinal grinder in the world that can be used continuously for up to 15 minutes on one charge, 2nd battery included.
Part Number: 65302A

110 Volt or 220 Volt

Perfect finishes on large surfaces, with no shadows or streaks



New abrasive mounting system saves time, reduces cost and eliminates vibration.

PTX Eco Smart is a multi-functional grinding and polishing system for flat surfaces and open or closed pipe constructions. It grinds from coarse to very fine finishes and burnishes to a high-gloss finish. It enhances stainless steel, steel and nonferrous metals including aluminum, brass, bronze and copper, as well as wood and rigid plastic.

Balanced straight-line handling, high torque and electronic speed control enable the PTX to easily produce matte, satin and other decorative surfaces up to a mirror finish. Besides fine finishing, the PTX is ideal for coarse grinding to remove welds, deep scratches, oxidation, rust and paint.


PTX Eco Smart features a newly developed abrasive mounting system. This unique system allows grinding and polishing wheels to be changed in seconds, without tools or hardware. Simply slide the wheels and accessories onto the finned, rigid rubber shaft. They secure themselves automatically when the machine turns.

The finned shaft design ensures absolutely no vibrations during operation and 100% concentricity. The main savings compared to other linear grinders comes from the cost of abrasives. The elimination of an internal core means the abrasive wheels can be produced less expensively, while delivering the same high-quality results.

CS Unitec can provide you with an extensive range of abrasive tools (patent pending) and accessories to cover almost every conceivable surface finishing application.

PTX Eco Smart Specifications

Order Number: 47002A

Power	15 Amp (1650 Watts) 110 Volt / 60 Hz (Also available: 230 Volt / 50 Hz)	
Speed control dial	Variable speed control from 950 to 3700 RPM with tachogenerator for constant speed, even under load	
Wheel width	up to 4" (or 6" wide abrasives)	
Wheel diameter	up to 4-1/2"	
Weight	7.25 lbs.	
Standard equipment	4" Interleaf (combi) wheel – P/N 47312 Shaft Adapter – P/N 42004	



A range of professional PTX Eco Smart kits is available for a variety of applications. See page 6 for more information.



Satin finishing using interleaf fleece wheel.



A wide selection of hollow-core abrasives is available for the PTX Eco Smart. The lack of a core insert means that the abrasives are lighter, easier to use and less expensive.

NOTE: We do continue to carry abrasives with core insert adapters for older LP 1503 VR model grinders and other machines. See our Price List for details.

Accessories

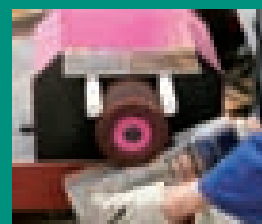


Hollow-core Shaft Adapter

Allows user to utilize more economical hollow-core abrasives on traditional surface finishers. Fits 3/4" dia. x 4" long shaft and 1/4" keyway(s). Overall diameter of adapter is 1-3/4" (45mm) **Part Number: 42004**

The PTX Bench Grinder – MULTI-MAX

Multipurpose sander with two shaft mountings for grinding discs, angle grinders and grinding rollers for longitudinal grinders. Uses all PTX abrasive wheels and discs. (See page 12 for more details.)



Pneumatic Surface Finisher

Save time sanding and polishing. 4" wide face is ideal for finishing stainless steel, metals, wood and synthetics.

The powerful LP 1503 AIR grinding and polishing machine produces a uniform finish fast and easy without leaving visible transitions and shadows. It is compact, lightweight and heavy duty. Ideal for graining, polishing, brushing, blending, deburring, cleaning welds, roughing and more. Easily achieve a #3, #4 or #8 finish. A wide speed range, high torque and a comprehensive line of accessories make this an essential tool for continuous-duty surface finishing.

Pneumatic Surface Finisher Specifications

Order Number: LP 1503 AIR	
Load speed	2500 RPM
Motor	1 HP (1/2" Air Connection)
Air consumption	20 CFM @ 90 PSI
Weight	8 lbs.

Standard Equipment

4" Interleaf (combi) wheel – P/N 47312
Shaft Adapter – P/N 42004



1 HP air motor at 90 PSI

PTX Eco Smart Kits

PTX Professional Kit For Metalworking

This set comes in a strong, impact-resistant transport case and contains everything you need for shadow-free industrial finishes. Match or create any finish up to a mirror finish on metals. Prevent marks and fingerprints with newly developed cleaning products and preservatives.

Part Number 47004A

PTX Professional Kit for Metalworking includes:

- 1 PTX Eco Smart machine
- 1 Professional Case (P/N 80002)
- 1 40 grit flap wheel, 4" x 4-1/4" (P/N 47211)
- 1 80 grit interleaf (combi) wheel, 4" x 4-1/4" (P/N 47312)
- 1 Expansion roller, 3-1/2" x 4" (P/N 47005)
- 2 80 grit grinding belt sleeve, 3-1/2" x 4" (P/N 42080)
- 1 Fine fleece (Nonwoven) sleeve, 3-1/2" x 4" (P/N 42012)
- 1 Medium fleece (Nonwoven) sleeve, 3-1/2" x 4" (P/N 42011)
- 2 A45 "TZ" Pyramid sleeves, 3-1/2" x 4" (P/N 42245)
- 2 A30 "TZ" Pyramid sleeves, 3-1/2" x 4" (P/N 42230)
- 2 A16 "TZ" Pyramid sleeves, 3-1/2" x 4" (P/N 42216)
- 2 A06 "TZ" Pyramid sleeves, 3-1/2" x 4" (P/N 42206)
- 3 SuperPolish sleeves, 3-1/2" x 4" (P/N 42013N)
- 1 Belt driving roller (P/N 47006)
- 2 80 grit grinding belts, 1.2" x 24" (P/N 49080)
- 1 Medium fleece (Nonwoven) belt, 1.2" x 26" (P/N 49002)
- 2 A45 "TZ" Pyramid belts, 1.2" x 24" (P/N 49345)
- 2 A30 "TZ" Pyramid belts, 1.2" x 24" (P/N 49330)
- 2 A16 "TZ" Pyramid belts, 1.2" x 24" (P/N 49316)
- 2 A06 "TZ" Pyramid belts, 1.2" x 24" (P/N 49306)
- 3 SuperPolish belts, 1.2" x 26" (P/N 49004N)
- 1 Mini high gloss polishing paste, pink (P/N 40015T)
- 2 Mini polishing pastes, white and blue [P/N 40013 (white) P/N 40014 (blue)]
- 1 PTX lime spray can (P/N 40016)
- 5 Microfiber cloths (P/N 40030)
- 1 Brilliance clean spray bottle (P/N 40050)
- 1 INOX-protect spray bottle (P/N 40040)



PTX Basic Kit for Metal

Basic set for coarse finishing to #4 finish on flat surfaces and pipes.

Part Number 47003A

PTX Basic Kit for Metal includes:

- 1 PTX Eco Smart machine
- 1 Carrying Case (P/N 40008)
- 1 60 grit flap wheel, 4" x 4-1/4" (P/N 47212)
- 1 80 grit interleaf (combi) wheel, 4" x 4-1/4" (P/N 47312)
- 1 Expansion roller, 3-1/2" x 4" (P/N 47005)
- 1 Medium fleece (Nonwoven) sleeve, 3-1/2" x 4" (P/N 42011)
- 1 Belt driving roller (P/N 47006)
- 1 80 grit grinding belt, 1.2" x 24" (P/N 49080)
- 1 Medium fleece (Nonwoven) belt, 1.2" x 26" (P/N 49002)
- 1 40 grit grinding belt, 3.6" x 4" (P/N 42040)
- 1 60 grit grinding belt, 3.6" x 4" (P/N 42060)
- 1 80 grit grinding belt, 3.6" x 4" (P/N 42080)
- 1 120 grit grinding belt, 3.6" x 4" (P/N 42120)



PTX Kit For Woodworking

The complete set for treating wooden surfaces. Strong transport case with PTX Eco Smart and a range of brush wheels for various wood structures. Suction cover for extracting grinding dust particles.

Part Number 40004-3A



PTX Basic Kit for Woodworking includes:

- 1 PTX Eco Smart machine
- 1 Carrying Case (P/N 40008)
- 1 Suction cover (P/N 40005)
- 1 Spacer ring (P/N 40007)
- 1 PTX stranded wire wheel (P/N 56301)
- 1 Bristle wheel (P/N 46101)
- 1 Fiber wheel (P/N 46400)

PTX Grinding Wheels for Coarse and Fine Finishing

PTX abrasives from CS Unitec are made according to high quality standards. A unique production process guarantees high concentricity and thus vibration-free grinding – a prerequisite for fatigue-free working and perfect surface finishes with no transitions or shadows. **Simply try it!** You will be surprised how much smoother a PTX grinding wheel or brush wheel is.



PTX FLEECE (Nonwoven) Wheel

Elastic nylon fleece impregnated with abrasives for a first-class finish. Produces shadow-free matte, satin and polished finishes. For removing oxidation on stainless steel and nonferrous metals and also suitable for smoothing wooden surfaces. Very high fleece content by fleece compression.

Diameter: 4"
Width: 2", 4" or 6"
Grit: 60, 80, 180, 280, 400, 600, 900



PTX Interleaf (Combi) Wheel

Nylon fleece combined with abrasive flaps for matte finishing, burnishing and removing light scratches, oxidation and handling marks on stainless steel and all metals. For removing old paint on wood while smoothing at the same time.

Diameter: 4"
Width: 2", 4" or 6"
Grit: 60, 80, 180



PTX Flap Wheel

With radial abrasive cloth flaps in various grit sizes for removing rust, oxidation layers, minor scratches and for the regrounding and burnishing of metals.

Diameter: 4"
Width: 2" or 4"
Grit: 24, 40, 50, 60, 80, 120, 180, 240



PTX CLEAN Wheel

Made of hard-textured, nonwoven fleece for cleaning and descaling welds, pore-deep removal of rust, oxidation and coatings, cleaning beams, bricks, etc. Produces an effective linear finish on stainless steel. A new production process guarantees 100% concentricity.

Diameter: 4"
Width: 2" or 4"
Grit: Medium



PTX GUM Wheel

Soft rubber impregnated with abrasive grit for the removal of minor scratches. Ideal for a bright, decorative linear finish on stainless steel and nonferrous metals and for smoothing wooden fibers.

Diameter: 4"
Width: 2" or 4"
Grit: 60, 180

HOLLOW-CORE ABRASIVES HAVE MANY ADVANTAGES:

- Easy to mount – simply slide on and off
- 100% concentricity – no vibration
- Lower cost and higher productivity!

We continue to carry abrasives with core inserts.

See our Price List.

PTX FLEECE (Nonwoven) Wheels

Part No.	Grit	Size
47411	60 grit	4" dia. x 4-1/4" wide
47412	80 grit	4" dia. x 4-1/4" wide
47413	180 grit	4" dia. x 4-1/4" wide
47414	280 grit	4" dia. x 4-1/4" wide
47415	400 grit	4" dia. x 4-1/4" wide
43601*	600 grit	4" dia. x 4-1/4" wide
47417	900 grit	4" dia. x 4-1/4" wide
<hr/>		
47401	60 grit	4" dia. x 2" wide
47402	80 grit	4" dia. x 2" wide
47403	180 grit	4" dia. x 2" wide
47404	280 grit	4" dia. x 2" wide
47405	400 grit	4" dia. x 2" wide
47406	600 grit	4" dia. x 2" wide
<hr/>		
47422	80 grit	4" dia. x 6" extra wide
47423	180 grit	4" dia. x 6" extra wide

* Keyed Shaft

PTX Interleaf (Combi) Wheels

Part No.	Grit	Size
47311	60 grit	4" dia. x 4-1/4" wide
47312	80 grit	4" dia. x 4-1/4" wide
47313	180 grit	4" dia. x 4-1/4" wide
<hr/>		
47301	60 grit	4" dia. x 2" wide
47302	80 grit	4" dia. x 2" wide
47303	180 grit	4" dia. x 2" wide
<hr/>		
47322	80 grit	4" dia. x 6" extra wide
47323	180 grit	4" dia. x 6" extra wide

PTX Flap Wheels

Part No.	Grit	Size
47211	40 grit	4" dia. x 4-1/4" wide
47212	60 grit	4" dia. x 4-1/4" wide
47213	80 grit	4" dia. x 4-1/4" wide
47214	120 grit	4" dia. x 4-1/4" wide
47215	180 grit	4" dia. x 4-1/4" wide
47216	240 grit	4" dia. x 4-1/4" wide
<hr/>		
47201	24 grit	4" dia. x 2" wide
47202	40 grit	4" dia. x 2" wide
47203	50 grit	4" dia. x 2" wide
47204	60 grit	4" dia. x 2" wide
47205	80 grit	4" dia. x 2" wide
47206	120 grit	4" dia. x 2" wide
47207	180 grit	4" dia. x 2" wide
47208	240 grit	4" dia. x 2" wide*

PTX CLEAN Wheels

Part No.	Grit	Size
47511	Medium (black)	4" dia. x 4-1/4" wide
47501	Medium (black)	4" dia. x 2" wide

PTX GUM Wheels

Part No.	Grit	Size
45061	60 grit	4" dia. x 4-1/4" wide
250 526-4	180 grit	4" dia. x 4-1/4" wide
<hr/>		
47601	60 grit	4" dia. x 2" wide
250 526*	180 grit	4" dia. x 2" wide

* Keyed Shaft



Expansion Roller

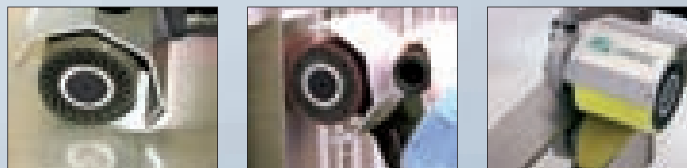
Use with sanding belts, fleece and felt sleeves. The sleeves are simply pushed over the expansion roller and held securely in place by the centrifugal force. **3-1/2" dia. x 4" wide - Part Number: 47005**

TIPS & TRICKS

Expansion Roller - Hard Rubber

Internal expansion slots now allow easier sleeve replacement and improved adjustment to the workpiece, as well as vibration absorption and concentricity.

Part Number: 47005



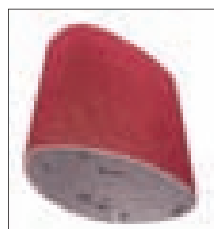
Belt Sleeves for Expansion Roller



PTX Zirconium Grinding Belt Sleeve

Made of zirconium. Removes deep scratches and grinds weld seams on metals. Far less rework is required as a result of using the time-saving linear grinding technique.

3-1/2" dia. x 4" wide
Grit: 40, 60, 80, 120, 150, 180



PTX Ceramic Grinding Belt Sleeve

High-performance ceramic aluminum oxide grain. Increased removal rate and longest life for highest productivity. Excels in all metals

3-1/2" dia. x 4" wide
Grit: 40, 60, 80



PTX "TZ" Pyramid Sleeve

New abrasive cloth with pyramid-shaped grit structure. Allows high material removal while producing a very fine finish, reducing the amount of work required when compared to grinding belt sleeves and fleece sleeves. Pyramid sleeves are ideal for pre-polishing for fine mirror finishes and for removing scratches and spot welds. Even roller scale can be removed easily.

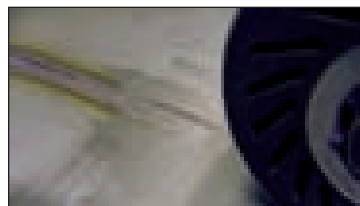
3-1/2" dia. x 4" wide
Grit: A65/320, A45/400, A30/600, A16/1200, A06/2000



PTX Fleece "Nonwoven" Sleeve

Nylon impregnated with abrasive grit for removing minor to medium scratch marks and oxidation coatings, matte and satin finishing and deburring applications.

3-1/2" dia. x 4" wide
Grit: Coarse, Medium, Fine, Superfine



The expansion roller is helpful when grinding large areas and removing large welds.

PTX Zirconium Grinding Belt Sleeves

Part No.	Grit	Size (dia. x width)	Quantity
42040	40 grit	3-1/2" x 4"	10 per pack
42060	60 grit	3-1/2" x 4"	10 per pack
42080	80 grit	3-1/2" x 4"	10 per pack
42120	120 grit	3-1/2" x 4"	10 per pack
42150	150 grit	3-1/2" x 4"	10 per pack
42180	180 grit	3-1/2" x 4"	10 per pack

PTX Ceramic Grinding Belt Sleeves

Part No.	Grit	Size (dia. x width)	Quantity
42440	40 grit	3-1/2" x 4"	10 per pack
42460	60 grit	3-1/2" x 4"	10 per pack
42480	80 grit	3-1/2" x 4"	10 per pack

PTX "TZ" Pyramid Sleeves

Part No.	Grit	Size (dia. x width)	Quantity
42265	A65/320 grit	3-1/2" x 4"	10 per pack
42245	A45/400 grit	3-1/2" x 4"	10 per pack
42230	A30/600 grit	3-1/2" x 4"	10 per pack
42216	A16/1200 grit	3-1/2" x 4"	10 per pack
42206	A06/2000 grit	3-1/2" x 4"	10 per pack

"TZ" PYRAMID GRIT COMPARISON TABLE

	A65	A45	A30	A16	A06
Corresponds to grit size	320	400	600	1200	2000

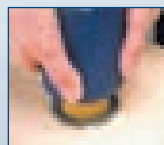
PTX Fleece "Nonwoven" Sleeves

Part No.	Grit	Size (dia. x width)	Quantity
42010	coarse (brown)	3-1/2" x 4"	5 per pack
42011	medium (red)	3-1/2" x 4"	5 per pack
42012	fine (blue)	3-1/2" x 4"	5 per pack
42009	superfine (grey)	3-1/2" x 4"	5 per pack

FLEECE COMPARISON TABLE

	Coarse (brown)	Medium (red)	Fine (blue)	Superfine (grey)
Corresponds to grit size	80	180	280	400

TIPS & TRICKS



To remove the grinding sleeve, place the expansion roller on a round object that is slightly smaller than the roller. Then push the sleeve down slightly using both hands.

Special Brushes for Metals, Wood and Hard Plastics



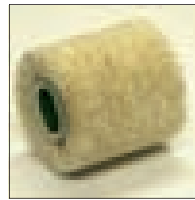
PTX Stranded Wire Wheels
 Sturdy steel wire brush. For deburring, rust removal, roughing and cleaning metal. For brushing out soft annual rings on timber, leaving a rough rustic effect.
 4" dia. x 2-7/8" wide - **Part Number: 46301**
 4" dia. x 1" wide - **Part Number: 47702***
 * Requires spacer rings 40007



PTX Bristle Wheel
 Elastic nylon brush impregnated with abrasive grit. For roughing and deburring metal, as well as creating a rustic effect with even annual ring transitions on timber.
 4" dia. x 2-7/8" wide - **Part Number: 46101**
 4" dia. x 1" wide - **Part Number: 46102N***
 * Requires spacer rings 40007



PTX Stainless Steel Wire Wheels
 Elastic stainless steel wire brush. For cleaning welds, deburring, removing rust, roughing and removing coatings.
 4" dia. x 2-7/8" wide - **Part Number: 251 625**
 4" dia. x 1" wide - **Part Number: 47722***
 * Requires spacer rings 40007



PTX Fiber Wheel
 Elastic fiber brush. For polishing stained wood, satin finishing, pore-deep dust removal and cleaning applications.
 4" dia. x 4" wide - **Part Number: 46400**

Note: Above wheels are configured for keyed shaft. Hollow-core shaft adapter not necessary.



Stranded wire wheel for creating a rustic effect on wood



Cotton Buffing Wheel
 Cotton yarn wheel for use with compounds. Produces a very bright high mirror finish. Use on flat, contoured or irregular surfaces.



4" dia. x 2" wide
Part Number: CS2405*
 4" dia. x 4" wide
Part Number: CS2410
 4" dia. x 6" wide
Part Number: CS2420

* Requires spacer rings 40007

Abrasives for Polishing to High-gloss and Mirror Finish



PTX Felt Sleeve
 Made of soft merino (endless) for polishing large stainless steel and nonferrous surfaces quickly to a mirror finish. Also suitable for hard plastics. Must be used with the expansion roller.
 3-1/2" dia. x 4" wide
Part Number: 42013

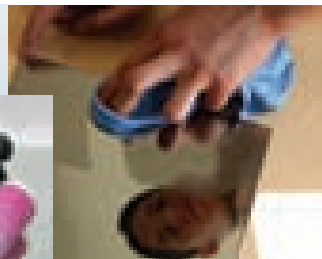
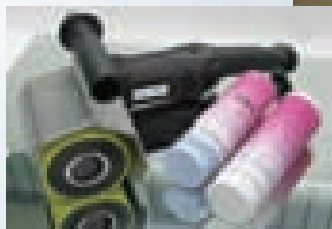


PTX SuperPolish Sleeve
 Revolutionary special fleece produces perfect brilliant, shadow-free mirror finishes on stainless steel and nonferrous metal surfaces using polishing compounds (white and blue) and pink polishing cream. SuperPolish fleece is absorbent, does not smear and saves significant work time. Must be used with the expansion roller.
 3-1/2" dia. x 4" wide - **Part Number: 42013N**



Poly-PTX Cotton Rings
 Fleece rings for polishing narrow or un-even stainless steel and non-ferrous metal surfaces surfaces using polishing compounds (white and blue) and pink polishing cream A separate Poly-PTX Cotton Ring must be used for each compound or cream so as not to mix different compound grits.
 For polishing narrow or uneven stainless steel surfaces:
 100mm x 12mm (4" dia. x 1/2" wide), 8 per pack **Part Number: 40019M**
 For polishing aluminum, brass and other nonferrous metals:
 100mm x 12mm (4" dia. x 1/2" wide) **Part Number: 250 521**

See page 10 for pre-grinding and polishing compounds, mirror-finish creams, cleaners and protective sprays for finished metal surfaces.



Polishing and Maintenance Products (cont'd)



PTX Pre-grinding & Polishing Compound
Essential for polishing all metals, including stainless steel, aluminum, etc.
PTX® WHITE pre-polishing compound (23 oz.) – **Part Number: 40013**
PTX® BLUE finishing compound (23 oz.) – **Part Number: 40014**
PTX® WHITE and BLUE mini pastes (approx 4.2 oz. ea.) – **Part Number: 40009**



PTX Polishing Cream, Pink
For finishing. Produces a perfect mirror finish on stainless steel and nonferrous metals when used with the SuperPolish Sleeve.
Can, 2.2 lbs. – Part Number: 40015
Miniature tube, 2 oz. (approx.) – Part Number: 40015T



PTX Lime (noncaustic)
For removing cream and compound residues. Scatter on the surface, and wipe off with a micro-fiber cloth.
Can, 2.2 lbs. – Part Number: 40016
Aluminum scatter container (approx 5.3 oz.) Part Number: 4002A
Scatter container only – Part Number: 40020



Micro-fiber Cloths
For pore-deep cleaning and even distribution of maintenance products and polishes. Our micro-fiber cloths produce a top finish on all materials.
Size: 13" x 14" – Part Number: 40030



INOX-Protect (hard sealant) Protects finished and polished metal surfaces (stainless steel, steel, aluminum, brass, copper, etc.) with a clear, dry adhesive film. Removes fingerprints and other dirt.
Canister (w/ spray bottle), 1.3 gal. – Part Number: 40041
Spray bottle, 17 oz. – Part Number: 40040



Brilliance-Clean
For streak- and residue-free cleaning of all surfaces, including stainless steel, steel, aluminum, brass and copper. Brilliance-Clean is not harmful to plastics, wood or coated surfaces. It removes fingerprints, dust, compound residue, minor oil and grease marks and adhesive residue effortlessly. Evaporates quickly without leaving any residue on the surface.
Canister (w/ spray bottle), 1.3 gal. – Part Number: 40051
Spray bottle, 17 oz. – Part Number: 40050



POLY Protection (oil film)
For cleaning and preserving finished and polished stainless steel and nonferrous metal surfaces. Protects against shadows and finger and water marks for a long time. Spray on and rub off with a micro-fiber cloth. Produces a darker effect on finished surfaces. Also suitable for food-grade and outdoor use.
Canister (w/ spray bottle), 1.3 gal. – P/N: 40012
Spray bottle, 17 oz. – Part Number: 40011

TIPS & TRICKS

A perfect mirror finish on stainless steel

The newly developed grinding and polishing system, featuring special **TZ-Pyramid** and **SuperPolish** fabrics from CS Unitec, produces a perfect mirror finish quickly and in just a few steps.



Step 1 - Pre-grinding
Prepare with **TZ Pyramid sleeve** grit A45 (possibly A65) to remove mill skin, scratches and minor unevenness.



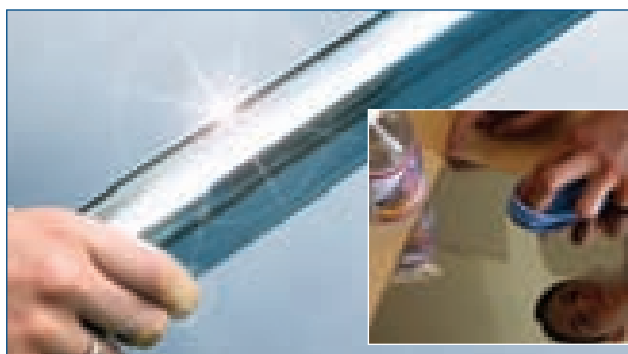
Step 2 - Intermediate grinding
Rework with **TZ-Pyramid A30** and complete with **TZ-Pyramid A16**. Use very little grinding pressure and grind perpendicular and diagonally.



Step 3 - Mirror finish polish
Use the **SuperPolish sleeve** with **white polishing paste**, then with **blue polishing paste**. Use a different sleeve for each paste grit. Polish diagonally. For a high gloss finish, use the **SuperPolish sleeve** with the **pink high gloss polishing cream**. Polish in one direction only.

Tip: After each step, remove the compound residue from the workpiece with **POLY Lime** and a **micro-fiber cloth**.

The result... a brilliant mirror finish!



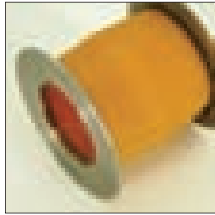
Maintain and protect finished or polished stainless steel surfaces.

Compound and cream residues can be removed using **PTX Lime**. Simply scatter on the lime and wipe it off using a micro-fiber cloth.

Compound residues, fingerprints, dust, minor oil and grease marks and adhesive residue can be removed effortlessly with **Brilliance-Clean**. Any residue will evaporate immediately.

To protect finished or polished metal surfaces, spray **INOX-Protect** on the surface, rub off with a micro-fiber cloth, wipe the surface dry and then polish briefly. The surface will be protected by a dry, invisible film for several weeks. Polished finishes will not be darkened by this product.

Abrasives for Pipe Constructions – Open or Closed



PTX Grinding Belt Roller with stainless steel flanges
 For grinding, fleece, SuperPolish and felt belts. The belt roller is made of wear-resistant soft Vulcanul with stainless steel discs on the sides. The surface is grooved to ensure that the abrasive belt does not slip.
Diameter: 3.5" x 2.8" Part Number: 47006



PTX Grinding Belt in high-quality aluminum oxide (closed)
 For coarse and initial grinding, rust removal and smoothing round metal pipes. For use with grinding belt rollers. For use on closed pipe constructions, see TIPS & TRICKS below. **Dimensions: 1.2" x 24"**
Grit: 40, 60, 80, 120, 150, 180, 240
See ordering information at right.



PTX TZ-Pyramid Belt (closed)
 New abrasive fabric with pyramid-shaped grit structure for removing scratches, roller scale and spot welds. TZ-Pyramid belts allow high material removal while producing a very fine finish. They are ideal for the initial grinding before polishing to a mirror finish. Because the grit fineness is increased slowly, it is possible to omit several operations. For use with grinding belt rollers. For use on closed pipe constructions, see TIPS & TRICKS below. **Dimensions: 1.2" x 24", Grit: A65, A45, A30, A16, A06**
See ordering information at right.



PTX Fleece Nonwoven Belt (open)
 Buttonhole fastening system for fine grinding and pre-polishing on open and closed pipe constructions and handrails. The fleece belt can be opened and closed as often as necessary. For use with grinding belt rollers. International patent and design protected.
Dimensions: 1.2" x 26", Grit: coarse, medium, fine, superfine
See ordering information at right.

↑
 With buttonhole – **PATENTED!**
 ↓



PTX Felt Belt (open)
 Made of merino felt with buttonhole fastening system for polishing work on open and closed pipe constructions and handrails. The polishing belt can be opened and closed as often as necessary. For use with grinding belt rollers and our polishing compounds and creams. Use a separate felt belt for each compound and cream grit. Do not use compounds with different grits on felt. International patent and design protected.
Dimensions: 1.2" x 26" Part Number: 49004



PTX SuperPolish Belt (closed)
 For a perfect mirror finish on pipe constructions and handrails. SuperPolish is a new, special micro fleece that produces a perfect, brilliant mirror finish on stainless steel and nonferrous metals. Smears and shadows are eliminated when used with our polishing compounds (white and blue) and pink cream. SuperPolish is absorbent and saves lots of work time. For use with grinding belt rollers. **Dimensions: 1.2" x 26"** (not available with buttonhole fastening system) **Part Number: 49004N**

PTX Grinding Belts (Aluminum Oxide)

Part No.	Grit	Size (width x length)	Quantity
49040	40 grit	1.2" x 24"	10 per pack
49060	60 grit	1.2" x 24"	10 per pack
49080	80 grit	1.2" x 24"	10 per pack
49120	120 grit	1.2" x 24"	10 per pack
49150	150 grit	1.2" x 24"	10 per pack
49180	180 grit	1.2" x 24"	10 per pack
49240	240 grit	1.2" x 24"	10 per pack

PTX "TZ" Pyramid Belts

Part No.	Grit	Size (width x length)	Quantity
49365	A65/320 grit	1.2" x 24"	10 per pack
49345	A45/400 grit	1.2" x 24"	10 per pack
49330	A30/600 grit	1.2" x 24"	10 per pack
49316	A16/1200 grit	1.2" x 24"	10 per pack
49306	A06/2000 grit	1.2" x 24"	10 per pack

PTX Fleece Nonwoven Belts (open)*

Part No.	Grit	Size (width x length)
49001	coarse (brown)	1.2" x 26"
49002	medium (red)	1.2" x 26"
49003	fine (blue)	1.2" x 26"
49007	superfine (grey)	1.2" x 26"

* Feature buttonhole fastening system



PTX Special Adhesive Tape
 With glass fabric insert for joining grinding belts. Strong, heat-resistant adhesive force. For joining PTX grinding and "TZ" Pyramid belts for use on closed pipe constructions.

Affix the adhesive tape over the entire length of the grinding belt, overlapping approximately 370°.

Dimensions: 1" x 165' Part Number: 49000



INOX Miter Tape
 Protect adjacent finishes when grinding. Self-adhering 304 Stainless tape for use when creating distinct edges on finishes. Excellent for creating mitered corners. Quick application and

residue-free removal. Minimal thickness for accurate grinding lines. Easily cut with scissors.

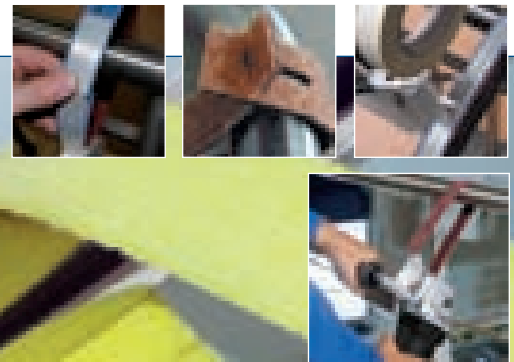
Dimensions: One roll measures 6" x 8.2 ft. Part Number: 40070

TIPS & TRICKS

Grinding and polishing closed pipe constructions

Fleece and felt belts with the patented buttonhole fastening system are ideal for working on closed pipe constructions and handrails. The grinding belt can be placed over the pipe and closed or opened again in a twist using the buttonhole system. Changing a belt is quick and easy. The belt can be opened and closed as often as required.

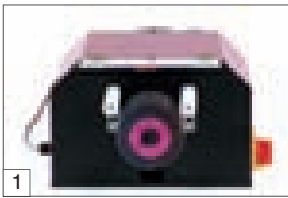
Closed belts such as the high-quality aluminum oxide belt or the "TZ" Pyramid belt must be cut open to work on closed pipe constructions. Place the belt over the pipe and join using our special adhesive tape (P/N 49000) over the entire length (approx. 370°).



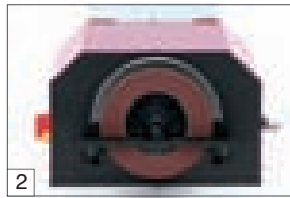
MULTI-MAX

Stationary multipurpose grinder for all workshop grinding, blending and finishing jobs.

Uses all PTX abrasive wheels and discs with 5/8" - 11 UNC threads or 7/8" arbor.



1 Shaft mounting for all abrasives from the PTX ECO SMART system. (See page 7-9)



2 5/8" - 11 UNC spindle thread for grinding discs or a 7/8" arbor.

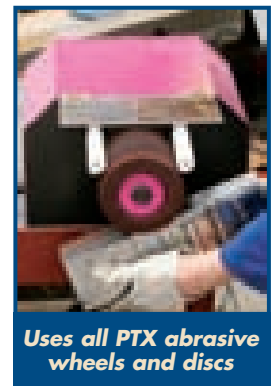


3 Uses the FIX HOOK AND LOOP SYSTEM, as well as all flap discs. (See pages 16-27)



4 Compatible with the new flexible shaft attachment. (See page 13)

Extensive accessories supplied
(See pages 7-9 & 16-27)



MULTI-MAX

220 - 240V 3-phase
Part No. 30402

MULTI-MAX

A versatile bench grinder

- Two shaft mountings. Uses grinding discs with 5/8"-11 UNC or 7/8" mounting and abrasive grinding wheels for longitudinal surface finishers.
- Fast deburring, trimming, grinding, brushing, and more.
- Uses Poly-PTX grinding wheels for longitudinal grinding, satin finishing, etc. (See page 7-9)
- Uses grinding discs for plain grinding, fine grinding, etc. (See pages 16-25)
- Uses FIX HOOK & LOOP system for plain grinding, fine grinding, and more. (See pages 26-27)
- Powerful 3-phase, 750 watts AC motor, 220 volt.
- Transparent, hinged grinding guard.
- Roller support for more accurate work.
- Adjustable support rail with safety hood for grinding discs up to 7".
- Drive motor can be used with the flexible shaft for grinding in narrow and awkward spots. (See right)
- For a safe upright working position, use with the MULTI-MAX machine stand. (P/N 30420)



MULTI-MAX Specifications

Order Number: 30402

Power	220 - 240V 3-Phase
Speed	2,800 RPM
Abrasive Diameters	4" to 7"
Disc Mounting	5/8"-11 UNC or 7/8" arbor
Wheel Mounting	Hollow core or Keyway
Weight	5.2 lbs.
Standard Equipment	Multi-Max Tool, 220V PTX Flap Wheel, 80 grit (2) PTX Interleaf, 180 grit (1) Mini polishing pastes, white (P/N 40013) and blue (P/N 40014) Spacer ring set (1) Flat flap disc, 80 grit (1 P/N 36080) FIX backing pad, 80 grit (1 P/N 80115U) FIX Zirconium discs, 40, 60, 80, 120 grit (1 ea.) FIX TZ Pyramid discs, 400, 600, 1200 grit (1 ea.) FIX Super Polish disc (1 P/N 80715N)
Replacement Discs	Flat flap disc, 60 grit (1 P/N 36060) Flat flap disc, 80 grit (1 P/N 36080) Flat flap disc, 120 grit (1 P/N 36120)

Flexible Shaft

for use with VARILEX®, Angle Grinders and MULTI-MAX

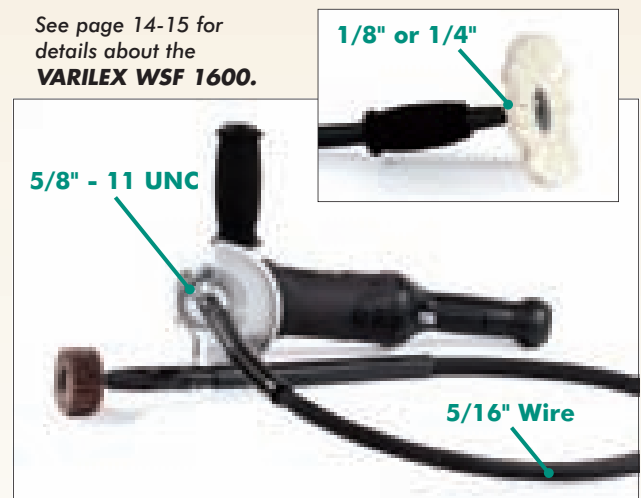
NEW!



The new flexible drive shaft with a sturdy core and 5/8"-11 thread means that the MULTI-MAX can now be upgraded to a powerful professional drive motor. Ideal for narrow and awkward spots. Accepts 1/8" or 1/4" shaft abrasives and with an adapter for polishing rings up to 6" diameter. The Flexible Shaft features an ergonomic handgrip with vibration reduction.

5/8"-11 UNC connecting thread can also be used with the VARILEX WSF 1600 or Angle Grinders!

See page 14-15 for details about the VARILEX WSF 1600.



Flexible Shaft Ordering Information

Item	Part No.
Flexible shaft with 5/16" steel wire and 5/8" thread	10015
Separate 1/8" collet for flexible shaft	10011A
Separate 1/4" collet for flexible shaft	10011B
Machine holder (powder-coated steel) incl. clamping screw for VARILEX® WSF 1600	10008

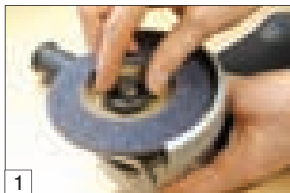
VARILEX® WSF 1600 *Professional*

The most powerful speed-controlled angle surface finishing and blending tool in its class.

Variable speed from 2000 to 7300 RPM, 12.27 Amp (1350 W) power, disc change in seconds without tools. For disc diameters of 4", 4-1/2", 5", 6" and 7".



VARILEX® is designed to efficiently maximize the capabilities of flap, grinding and cutting discs and the Hook & Loop system.



1 Simple, fast disc changing - with no tools - using the **5/8"-11 EASY-LOCK SPEED NUT**. 65008-1



2 New ergonomic design with vibration-damping handle for comfortable, fatigue-free working.



3 Adjustable cover guard.



4 Dust-tight field coil with special coating.

Very powerful and infinitely adjustable

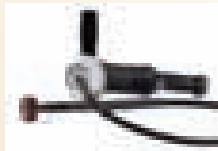


Varilex® WSF 1600 Part Number: 65000A

Safety Notice: Always use the protective wheel guard and follow all applicable safety instructions and regulations.



FLEXIBLE SHAFT - The new flexible drive shaft can now upgrade the VARILEX® WSF 1600 to a powerful professional drive motor for all applications. See page 13 for details.



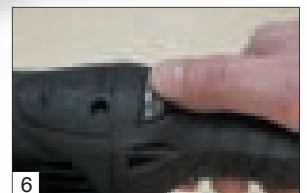
5 Service cover allows the carbon brushes to be changed quickly.



6 Easy speed control during operation.



7 Ergonomically positioned locking ON/OFF switch.



8 QUICK-LOCK cable for fast, easy replacement if cable is damaged. 10 ft., included.

The most powerful single-handed multi-function machine available – more than just an angle grinder!

The VARILEX® boasts a powerful 12.27 Amp, 1350 W motor that has been designed and developed for heavy industrial use. The speed is infinitely adjustable between 2000 and 7300 RPM. A tachogenerator keeps the speed constant, even when the grinder is operating at full load.

Sensitive variable-speed control makes the VARILEX® ideal for use with both flap discs and polishing discs, as well as grinding and cutting wheels, for applications ranging from grinding to blending, pre-polishing and polishing. The variable-speed control:

- Doubles the service life of the disc being used
- Prevents glazing of the disc and heat deformation on the workpiece
- Drastically reduces the noise level

The VARILEX® differs from a conventional angle grinder in its motor design to allow for exceptional performance at low RPM – without motor overheating or burnout. This machine also offers the ability to change discs in seconds, without tools, using the patented EASY-LOCK clamping nut and spindle lock. It also offers:

- Optimal speed setting for a range of grinding and polishing tools, yielding perfect results every time
- A balanced handle that ensures fatigue-free grinding

The VARILEX® is not designed for continuous use at low speed for polishing paint in the automotive trade.



VARILEX® WSF 1600 Professional Specifications

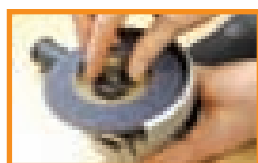
Order Number: 65000A

Power	12.27 Amp (1350 Watts) 110 Volt / 60 Hz (Also available: 230 Volt / 50 Hz)	
Variable speed	Infinitely adjustable from 2000 to 7300 RPM	
Diameters	4" to 7"	
Spindle thread	5/8"-11 UNC	
Arbor size	7/8"	
Weight	5.2 lbs.	

Use with various discs and safety guards

Available with safety guards (5", 6" and 7") for use with various-size grinding discs from 4" to 7" diameter (typical disc diameters are 4", 4-1/2", 5", 6" and 7").

5/8"-11 EASY-LOCK SPEED NUT Clamping System



Using the **EASY-LOCK SPEED NUT**, you can change the abrasive disc on the VARILEX in a matter of seconds – without tools!

Easy hand tightening eliminates the need for wrenches and expensive 5/8"-11 hubs.

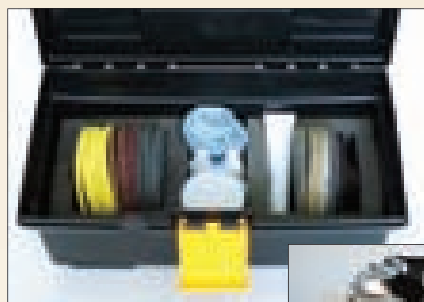
Part Number: 65008-1

Kit sets for VARILEX® WSF 1600 Professional Multifunction Tool



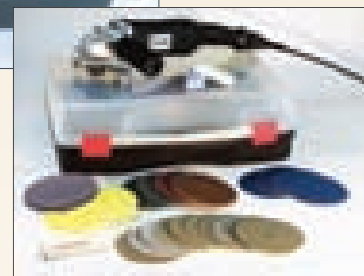
Varilex® WSF 1600 Basic Starter Kit Part Number: 80053

Varilex® Basic Starter Kit includes 1 VARILEX® WSF 1600, 110 V with 5/8"-11 spindle, 1 Wheel guard for discs up to 5", 1 Carrying Case, 1 EASY-LOCK SPEED NUT, 2 PLANTEX® Cool Top 5" grit 40, 3 PLANTEX® 5" grit 40, 2 PLANTEX® Cool Top 5" grit 60, 2 PLANTEX® 5" grit 60.



FIX Hook & Loop System Kits

See pages 26-27 for two versatile Varilex® WSF 1600 / FIX Hook & Loop System kits.



TIPS & TRICKS

Polish stainless steel to a mirror finish with the VARILEX® WSF 1600 Professional

(1) Initial grinding (remove scratches and roller scale, level welds) with TZ Pyramid disc A45 (grit 400) or A65 (grit 320). Finish with TZ Pyramid disc A30 (grit 600) and A16 (grit 1200) (→ page 27)

(2) Main polish with SuperPolish disc and white polishing compound, then with blue polishing compound. Important: Use a separate disc for each compound grit.

(3) Mirror finish with SuperPolish disc and pink polishing cream (→ page 10)

FLAP DISCS

Longer, faster
and better grinding.



Unbeatable technology and performance

The first flap discs for high-speed angle grinders were developed at the end of the 1970s. More than 30 years of experience and unbeatable technology go into the manufacture of every CS Unitec flap disc. In terms of material removal capacity, service life and grinding quality, the flap discs that bear the brand TIGER SHARK-PLANTEX® – plus the newest development, PLANTEX®, made of hemp fiber high-tech compound – are among the best in the world.

Top of the class in material removal, service life and quality

The performance and service life of a flap disc are not only dependent on the abrasive fabric used, but above all on the correct combination of elastic backing material; grit mixtures on the flaps; the angle at which the flap is held against the material; hard pressing; gluing system; and more. These considerations are part of what sets CS Unitec apart from the rest – not all flap discs are the same!

Good for the environment and better for your health

Great care is taken to select raw materials that are environmentally sound and user friendly. Commonly used materials such as fiberglass, mineral fibers and epoxy resins are avoided in favor of sustainable raw materials such as hemp for the discs' backing plates. A patented, revolutionary elastic adhesive mounting system for the abrasive fabric flaps further contributes to the safety, performance, service life and user friendliness of CS Unitec flap discs. Our discs also considerably reduce vibration and noise while grinding.

Unique patented production process

Completely new production technologies have been developed to manufacture our high-quality flap discs. The adhesion of the flaps to the backing disc is achieved using a patented, revolutionary adhesive system. In contrast to many rival products, the flaps of CS Unitec's discs are pressed on to the backing disc over their full area – throughout the entire hardening process – to produce a solid, compact and vibration-stable abrasive. This also gives added support to the grits and holds them firmly in their mounting, considerably extending the service life of the grinding discs.

Standard and endurance tests ensure quality and play an essential role in progressive new developments.

Speed test

Grinding discs are tested on a centrifugal test machine to ensure that they can withstand the sort of speeds that are required for grinding work. The test system can test discs at speeds of up to 30,000 RPM.

Endurance grinding test

Endurance tests are conducted to measure the material removal and service life of flap discs. New fabrics are tested to ensure their suitability and their grinding properties on various materials.

Compliant with American and German standards set by ANSI B7.1 and DIN 13743.



CS Unitec Flap Disc



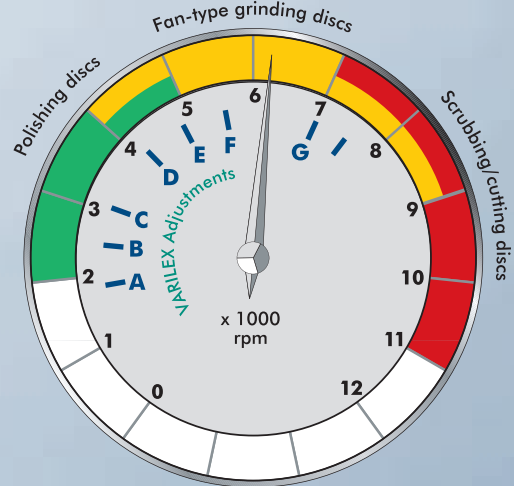
Standard Flap Disc

A clear difference

These pictures show the clear difference between a CS Unitec flap disc with hard-pressed flaps (top) and a standard flap disc with fiberglass backing and unpressed flaps (bottom). The poorly pressed disc tends to "chatter" during the grinding process, generating vibrations and resulting in the grit pulling away from the mounting prematurely. This results in irregular grinding, poor grinding capacity, short service life and potential flap tearing.

Check the speed

The right speed increases the service life of flap discs by up to 100% – a major factor in ensuring a low-cost workflow. Operating flap discs between 5000 and 8000 RPM sets the table for optimal grinding capacity and service life. Powerful, speed-controlled angle grinders such as the VARILEX® WSF 1600 Professional (see page 14) are ideal for working with flap discs.



Recommended speeds for maximum flap disc service life and economy:

- 4" diameter:** 9000 – 11,000 RPM
- 4-1/2" diameter:** 7000 – 9000 RPM
- 5" diameter:** 6000 – 8000 RPM
- 6" diameter:** 5000 – 7000 RPM
- 7" diameter:** 4000 – 6000 RPM

Grinding & Polishing Discs



PLANTEX®

Flap discs for grinding steel and stainless steel, with hemp/polypropylene backing.

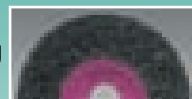
See page 18-20



MAGNUM® FLEECE

For surface conditioning, fine finishing and polishing.

See page 24



MAGNUM® CLEAN

For pore-deep cleaning of metals.

See page 25



PLANTEX® COOL TOP

Provides additional cooling to improve grinding performance and service life for stainless steel.

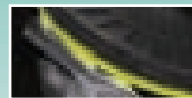
See page 21



POLY-MAGIC-WHEEL

Ideal for dry polishing in corners.

See page 22



FIX HOOK & LOOP SYSTEM

Highly elastic backing disc for outstanding finish quality.

See page 26-27



TIGER SHARK-PLANTEX®

Specially designed for grinding aluminum.

See page 23



REDUCED SPARKING & CUT-OFF DISCS

EB diamond wheels reduce sparking.

See page 28-29

PLANTEX®

High-tech Compound

Steel/Stainless Steel/Aluminum

A quantum leap in flap disc technology.

Provides:

- ✓ Higher Productivity
- ✓ Lower Cost
- ✓ Increased Safety



PLANTEX® offers important advances in grinding performance, service life, protection for the environment and personal safety.

The development of the new PLANTEX® high-tech compound has resulted in the production of the first flap discs in the world with a backing plate made of natural hemp, with polypropylene used to bind it. In addition to excellent material abrasion and a long service life, the discs offer maximum operator safety, protection of natural resources and environmental friendliness.

This new composite material (hemp and polypropylene) minimizes pollution from production to waste disposal. Even the polypropylene binding material combusts to approximately 1% carbon when disposed of by thermal methods, producing almost zero residue. Polypropylene is physiologically safe and is used in automotive engineering (interior) and medical technology for common items such as syringes, cannulae and infusion bottles. As a result of its fiber structure, the hemp fiber offers excellent tearing strength values. The superior strength values of this high-tech compound are achieved through a patented new treatment ("impact method") for hemp fibers.

Hemp fiber high-tech compound is an almost ideal base material for flap disc backing plates – it is elastic, heat-absorbent (for low grinding temperatures), very easy to trim, safe to use and easy to dispose of. The cavities of the hemp fiber structure, in conjunction with polypropylene, have a highly insulating, damping and noise-reducing effect, thus enhancing the safety features of the discs.



Made in Germany

PLANTEX®

Hightech-Compound

PATENTED!



Safer working conditions

- No fiberglass, no mineral fibers, no epoxy resin
- Easy to trim, safe to use, easy to dispose of

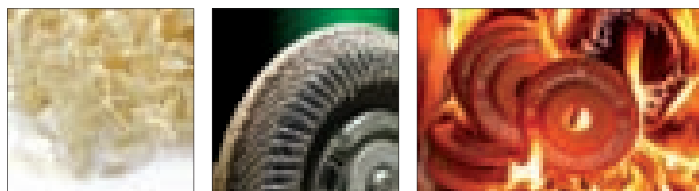
Earth friendly

- Minimizes pollution, from production to disposal
- Hemp plant counteracts greenhouse effect

Competitively priced

- Lower cost of production
- Superior service life; 100% utilization

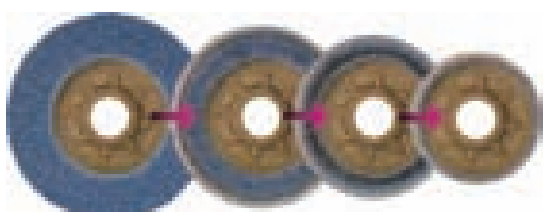
The high-tech compound material used for the PLANTEX® flap disc is perfectly safe. The backing plate is trimmed automatically during the grinding process or can be trimmed manually using cutting tools. The CO₂ and energy balance are also impressive. During its growth, 1 ton of hemp converts approximately 2 tons of carbon dioxide into oxygen by means of photosynthesis. Hemp therefore plays a beneficial role in counteracting the greenhouse effect.



Trimming with cutting tools produces soft, harmless chips that can be disposed of as domestic waste (smell is similar to wood chips). Thermal disposal incinerates without residue, apart from 1% carbon.

Grinding down to the last fraction of an inch

The backing plate used on PLANTEX® flap discs reduces in diameter automatically during grinding. It can also be trimmed with cutting tools, a process that is simple and straightforward. The PLANTEX® flap disc can be used down to the last flap of the abrading fabric – and saves you money in the process!



100% Service Life!

Use down to the last abrasive flap by automatic trimming during grinding or trimming using cutting tools on a sharp steel edge.

Ordering information for general-use PLANTEX® flap discs, as well as the full line of PLANTEX® products, begins on the next page.

PLANTEX® – features to convince everybody!

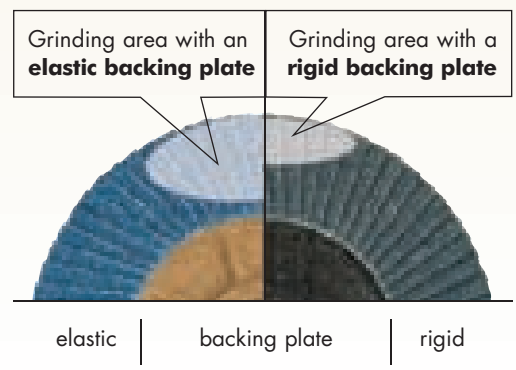


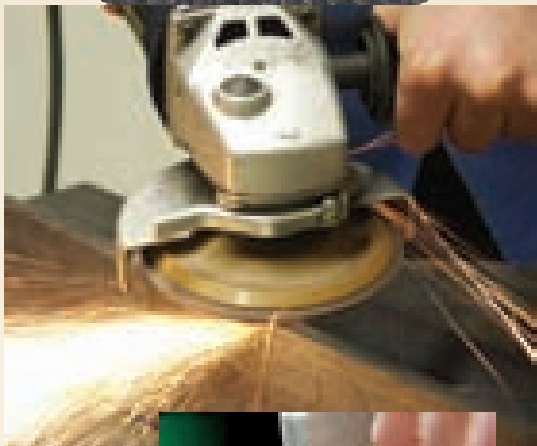
- Superior material abrasion and service life due to the discs' springy elasticity and 100% pure zirconium.
- Self-trimming and very easy to cut – the backing plate reduces in size automatically during the grinding process.
- Adjusts better to the surface of the workpiece during grinding.
- Absorbs vibration and noise due to its high fiber content.
- Heat-absorbent high-tech compound (with hollow fiber insulation) reduces the temperature during grinding.
- High strength, yet lightweight.
- High shape stability while maintaining elasticity.
- High-tech compound is resistant to most chemicals.
- Made of a sustainable raw material – protects valuable natural resources.
- The backing plate can be disposed of safely and easily (polypropylene binding combusts to approx. 1% carbon).
- Hemp provides good energy and CO₂ balance.
- Outstanding value: PLANTEX® costs no more than a medium-quality conventional flap disc.

The clever ones give way!



The fiber substrate of the PLANTEX® high-tech compound gives it absorbent, spring-like properties that enhance grinding performance. This elasticity provides a greater contact surface area with the workpiece (more grit is used) that results in more material being abraded. The material removal capacity is therefore higher. The larger contact surface area also dissipates more heat, making the grinding work cooler – the workpiece does not suffer smearing and the abrasive fabric does not burn.





PLANTEX®

Elastic flap disc for general use.

The PLANTEX® high-tech compound is becoming the standard flap disc for many companies. The backing plate is made of hemp fiber and can be trimmed completely. High grinding performance is achieved with the extreme elasticity of the backing plate and the 100% RZ-Zirconium abrasive fabric.

PLANTEX® Specifications

Dimensions	Diameter: 4", 4-1/2", 5", 7"
Max. speed	13,300 RPM for 4-1/2" diameter
Ideal speed	5000 to 8000 RPM
Complies with	ANSI B7.1, 260 ft./sec. DIN EN 13743
Grits	40, 60, 80, 120
Arbor size	5/8" or 7/8"

PLANTEX® Ordering Information

Part No.	Size (dia. x width x arbor)	Grit	Max. Speed	Quantity
93514	4" x 0.63" x 5/8"	40	15,000 RPM	10 pack
93516	4" x 0.63" x 5/8"	60	15,000 RPM	10 pack
93518	4" x 0.63" x 5/8"	80	15,000 RPM	10 pack
93519	4" x 0.63" x 5/8"	120	15,000 RPM	10 pack
93524	4-1/2" x 0.87" x 7/8"	40	13,300 RPM	10 pack
93526	4-1/2" x 0.87" x 7/8"	60	13,300 RPM	10 pack
93528	4-1/2" x 0.87" x 7/8"	80	13,300 RPM	10 pack
93529	4-1/2" x 0.87" x 7/8"	120	13,300 RPM	10 pack
93534	5" x 0.87" x 7/8"	40	12,200 RPM	10 pack
93536	5" x 0.87" x 7/8"	60	12,200 RPM	10 pack
93538	5" x 0.87" x 7/8"	80	12,200 RPM	10 pack
93539	5" x 0.87" x 7/8"	120	12,200 RPM	10 pack
93544	7" x 0.87" x 7/8"	40	8600 RPM	10 pack
93546	7" x 0.87" x 7/8"	60	8600 RPM	10 pack
93548	7" x 0.87" x 7/8"	80	8600 RPM	10 pack
93549	7" x 0.87" x 7/8"	120	8600 RPM	10 pack

PLANTEX®

 Hightech-Compound

PLANTEX® COOL TOP®

STAINLESS STEEL

Flap disc with cool performance for grinding stainless steel.

The PLANTEX® high-tech compound is becoming the standard flap disc for many companies. It is fiberglass free and provides excellent performance and service life. PLANTEX® also protects the environment and precious resources.

The PLANTEX® COOL TOP® high-tech compound has been specifically developed for grinding stainless steel.

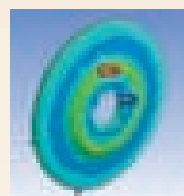
A new abrasive fabric with additional top-size coating improves grinding performance and service life and also provides additional cooling.

PLANTEX® COOL TOP® Specifications

Dimensions	Diameter: 4", 4-1/2", 5", 7"
Max. speed	13,300 RPM for 4-1/2" diameter
Ideal speed	5000 to 8000 RPM
Complies with	ANSI B7.1, 260 ft./sec. DIN EN 13743
Grits	40, 60 (for finer grits, use PLANTEX 80 and 120)
Arbor size	5/8" or 7/8"

PLANTEX® COOL TOP® Ordering Information

Part No.	Size (dia. x width x arbor)	Grit	Max. Speed	Quantity
93614	4" x 0.63" x 5/8"	40	13,300 RPM	10 pack
93616	4" x 0.63" x 5/8"	60	13,300 RPM	10 pack
93624	4-1/2" x 0.87" x 7/8"	40	13,300 RPM	10 pack
93626	4-1/2" x 0.87" x 7/8"	60	13,300 RPM	10 pack
93634	5" x 0.87" x 7/8"	40	12,200 RPM	10 pack
93636	5" x 0.87" x 7/8"	60	12,200 RPM	10 pack
93644	7" x 0.87" x 7/8"	40	12,200 RPM	10 pack
93646	7" x 0.87" x 7/8"	60	12,200 RPM	10 pack



Strength & safety with FEM

The backing plate for the PLANTEX® high-tech compound is calculated using the finite element method (FEM). That ensures that it provides the optimal strength and safety properties, while minimizing material use. Like all flap discs from CS Unitec, PLANTEX® flap discs are approved for 260 ft./sec. to DIN EN 13743 and have been approved by the MPA (Material Testing Institute) in Hanover and by the BGIA (Professional Association Institute for Industrial Safety). PLANTEX® additionally complies with ANSI standard B7.1.

Easy Disc Changeover -

No Wrenches or Hubs Required!

Grinding discs can be changed in seconds, without tools, using the 5/8"-11 EASY-LOCK SPEED NUT. It is easily tightened by hand and eliminates the need for wrenches or expensive hubs.

Part Number: 65008-1



POLY-MAGIC-WHEEL

Dry polish stainless steel in corners up to a mirror finish!

The POLY-MAGIC-WHEEL is designed for finishing and dry polishing in corners, producing up to a perfect mirror finish in just two steps. These discs are made of highly compressed fleece material and are made in a sophisticated production process using compressed single flaps that are strengthened by being impregnated with foam. This special process allows considerably more abrasive material to be used than on conventionally wound "unitized wheels and discs."

The POLY-MAGIC-WHEEL is ideal for grinding and polishing bead and corner welds. It may only be used frontally.

POLY-MAGIC-WHEEL Specifications

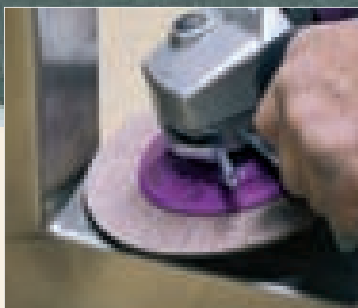
Dimensions	6-1/2" dia. x 1/2" material thickness x 7/8" arbor
Max. speed	5000 RPM
Ideal speed	3000 to 4000 RPM
Grits	A/80, B/900

Ideal for speed-controlled angle grinders

POLY-MAGIC-WHEEL Ordering Information

Part No.	Grit	Usage	Qty.
96720	Grit A (80 grit)	Initial grinding & leveling welds (red)	5 pk.
96721	Grit B (900 grit)	Polishing to a perfect mirror finish (gray)	5 pk.

Ideal for polishing in corners



TIPS & TRICKS

Polishing corner welds with the POLY-MAGIC-WHEEL

Obtaining good polish quality when finishing corner welds is difficult, especially for the fabrication of railings. The POLY-MAGIC-WHEEL was designed to help you more easily produce a truly perfect finish in these applications. This highly compacted fleece disc was designed specifically for grinding and polishing bead and corner welds. The POLY-MAGIC-WHEEL disc can reduce the time required for this work to a minimum, and the result can only be described as a minor miracle.

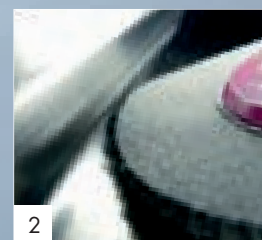
Carry out the initial grinding and leveling of welds with the red disc, grit A (80 grit).

Then polish to a mirror finish using the POLY-MAGIC gray disc, grit B (900 grit). These discs are very aggressive; they save a lot of working time and the result is sensational. No polishing compounds or creams are required for polishing with the POLY-MAGIC-WHEEL (dry polish).

Mirror finish in 2 steps:



1 POLY-MAGIC-WHEEL A (80 grit)



2 POLY-MAGIC-WHEEL B (900 grit)

TIGER SHARK-PLANTEX® & KANGAROO ALU-FIX® OIL

Aluminum

The new dimension for grinding aluminum.

TIGER SHARK-PLANTEX® elastic discs are unbeatable for the difficult grinding of aluminum. High material removal, reduced grinding temperature and no glazing with aluminum particles make the TIGER SHARK® the first choice for these applications. This flap disc, with its ceramic/corundum cotton abrasive fabric, also offers high grinding capacity and low tool costs for steel and nonferrous metals. The backing plate is elastic PLANTEX® earth-friendly compound and adjusts well to the shape of the workpiece. TIGER SHARK® is ideal for grinding curved surfaces and shapes, and it is often used in car body shops, car workshops and for tool making.

The excellent features of the TIGER SHARK® can be enhanced even further with the newly developed Kangaroo ALU-FIX® OIL. A quick spray on the workpiece will solve many of the problems you may have encountered while grinding aluminum in the past. Glazing is no longer necessary, the material removal rate is up to 300% higher, the finish is visibly better – and the flap disc will last up to three times longer.

TIGER SHARK-PLANTEX® Specifications

Dimensions	Diameter: 4", 4-1/2", 5", 7"
Max. speed	13,300 RPM for 4-1/2" diameter
Ideal speed	5000 to 8000 RPM
Compliant with	ANSI B7.1, 240 ft./sec. DIN EN 13743
Grits	40, 60, 80, 120

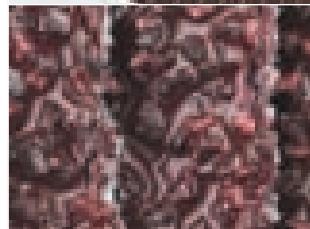
TIGER SHARK-PLANTEX® Ordering Information

Order No.	Size (dia. x arbor)	Grit	Max. Speed	Quantity
93814	4" x 5/8"	40	15,000 RPM	10 pack
93816	4" x 5/8"	60	15,000 RPM	10 pack
93818	4" x 5/8"	80	15,000 RPM	10 pack
93819	4" x 5/8"	120	15,000 RPM	10 pack
93824	4-1/2" x 7/8"	40	13,300 RPM	10 pack
93826	4-1/2" x 7/8"	60	13,300 RPM	10 pack
93828	4-1/2" x 7/8"	80	13,300 RPM	10 pack
93829	4-1/2" x 7/8"	120	13,300 RPM	10 pack
93834	5" x 7/8"	40	12,200 RPM	10 pack
93836	5" x 7/8"	60	12,200 RPM	10 pack
93838	5" x 7/8"	80	12,200 RPM	10 pack
93839	5" x 7/8"	120	12,200 RPM	10 pack
93844	7" x 7/8"	40	8600 RPM	10 pack
93846	7" x 7/8"	60	8600 RPM	10 pack
93848	7" x 7/8"	80	8600 RPM	10 pack
93849	7" x 7/8"	120	8600 RPM	10 pack

Kangaroo ALU-FIX® OIL

Spray on aluminum workpiece to improve the removal rate and increase abrasive life. Available in a 1 pint spray bottle or a 1.3 gal. canister with a spray bottle.

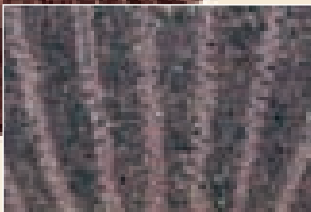
Part Numbers: 1-pint spray bottle – 40010
1.3 gal. canister and spray bottle – 40010k



Unique flap discs with a PLANTEX® elastic backing disc.

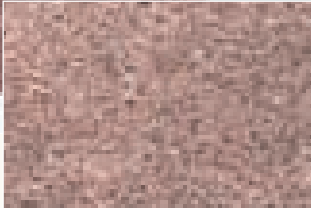
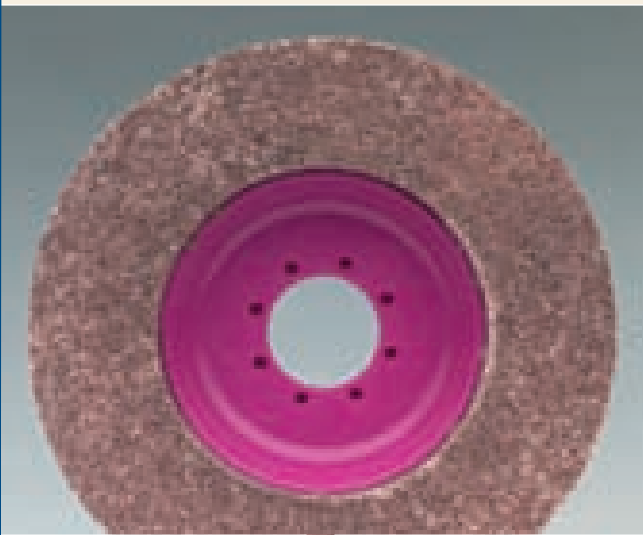


FLAP DISCS FOR GRINDING ALUMINUM



MAGNUM® TOPMIX Ordering Information

Part No.	Size (dia. x thick x arbor)	Grit	Max. Speed	Qty.
96705	5" x 5/8" x 7/8"	80	6000 RPM	5 pk.



MAGNUM® FLEECE TOP Ordering Information

Part No.	Size (dia. x thick x arbor)	Grit	Max. Speed	Qty.
96710	4-1/2" x 5/8" x 7/8"	80	8000 RPM	5 pk.
96711	4-1/2" x 5/8" x 7/8"	180	8000 RPM	5 pk.
96712	4-1/2" x 5/8" x 7/8"	280	8000 RPM	5 pk.
96713	4-1/2" x 5/8" x 7/8"	400	8000 RPM	5 pk.
96714	4-1/2" x 5/8" x 7/8"	600	8000 RPM	5 pk.
96715	4-1/2" x 5/8" x 7/8"	900	8000 RPM	5 pk.

MAGNUM® TOPMIX

Increased material removal,
longer service life.

The MAGNUM® TOPMIX was developed to increase material removal during finishing while also improving service life. The 80 combination grit is much more aggressive than our MAGNUM® FLEECE TOP 80 grit (see below). Individual flaps with foamed and compressed fleece offer a much higher removal capacity, making it ideal for removing spot welds and deep scratches on stainless steel, steel and nonferrous metals. The coordinated fleece combination additionally ensures that a good finish is achieved. The MAGNUM® TOPMIX also offers excellent service life, making deburring and cleaning of cast parts and welds a breeze.

MAGNUM® TOPMIX Specifications

Dimensions	5" dia. x 5/8" fleece thickness x 7/8" arbor
Ideal speed	2000 to 4500 RPM
Max. speed	6000 RPM
Grit	80

Ideal for speed-controlled angle grinders

MAGNUM® FLEECE TOP

Made of foamed, compressed-grit,
interspersed nonwoven fleece.

The MAGNUM® FLEECE TOP is a versatile fleece disc for surface conditioning, fine finishing and polishing, offering up to eight times the service life of traditional fleece and SC discs. Its range of uses is impressive. The FLEECE TOP is an ideal disc for metalworking that requires fine grinding and pre-polishing to a uniform clean finish, and it is effective at descaling and removing oxidation, scratches, rust, burrs and paint. It replaces a wire brush, abrasive paper and grinding rubbers and is self cleaning, with a special mixture that prevents glazing and loading. The foamed fleece ring is approx. 5/8" thick. This highly compressed quantity of fleece material ensures an extra-long service life.

MAGNUM® FLEECE TOP Specifications

Dimensions	4-1/2" dia. x 5/8" fleece thickness x 7/8" arbor
Ideal speed	2000 to 4500 RPM
Max. speed	8000 RPM
Grits	80, 180, 280, 400, 600, 900

Ideal for speed-controlled angle grinders

MAGNUM® CLEAN

For pore-deep cleaning of metals
(sand-blasting effect).

MAGNUM CLEAN® is an elastic cleaning disc for the pore-deep cleaning of metals. This elastic coarse fleece disc is interspersed with silicon carbide grit and cleans without harming the base material. The disc itself is iron-free, which means that there is no risk of corrosion. The coarse fleece material will not glaze or load, even if exposed to heavy contamination. MAGNUM CLEAN® is the ideal cleaning disc for pore-deep removal of paint, rust, scale and oil smears, as well as for cleaning and exposing without material removal. It is ideal for use in body shops (cleans thin sheet metal with no material removal) and in the automotive industry, and it is also suitable for underseal, renovating, painting and building work. MAGNUM CLEAN® is particularly good for removing paint and other coatings on wood, stone and metal (including window frames, doors and frames, furniture, house facades, graffiti, railings, fences, supports and machines).

MAGNUM® CLEAN Specifications

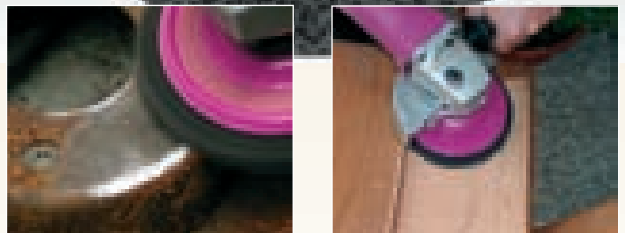
Dimensions 5" dia. x 5/8" material thickness x 7/8" arbor

Ideal speed 2000 to 4500 RPM

Max. speed 5000 RPM

Grit Medium

Ideal for speed-controlled angle grinders



MAGNUM® CLEAN Ordering Information

Part No.	Size (dia. x thick x arbor)	Grit	Max. Speed	Qty.
96700	5" x 5/8" x 7/8"	Medium	5000 RPM	10 pk.

PATENTED!

FIX HOOK & LOOP SYSTEM

Highly elastic backing disc for previously impossible finish quality; ideal for surface conditioning and polishing up to a mirror finish.

The FIX Hook & Loop system takes advantage of a flexible backing pad and allows a disc to be changed in seconds without tools.

The FIX Hook & Loop system is a good fit wherever disc flexibility and frequent changeover are important. It will save time in industrial metalworking applications such as car body shops and repair shops.

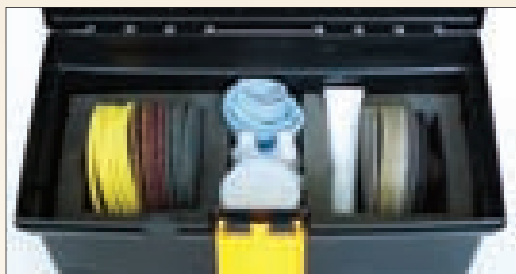
The system requires a speed-controlled angle grinder, such as the VARILEX WSF 1600 Professional. A wide range of abrasives are available for all steps leading from rough grinding up to a mirror finish.

The FIX Hook & Loop's "green" backing disc is made of natural materials. The flexibility of the abrasives allows you to achieve results similar to stationary grinding machines.

The FIX family of abrasives must be used with the FIX original backing disc.



The FIX Hook & Loop system is an essential surface finishing and polishing system for all sheet metal applications.



FIX Test Kit

This kit contains all the FIX Hook & Loop System components to go from rough grinding up to a mirror finish. See page 27 for kit contents **Part Number: 80051U**



FIX starter kit

This kit includes a range of FIX Hook & Loop components, as well as a VARILEX WSF 1600 Angle Grinder. See page 27 for kit contents. **Part Number: 80050U**



Special FIX Backing Disc with PUR Foam Absorption Coating

For use with the FIX Zirconium disc, FIX TZ Pyramid disc and FIX SuperPolish disc. The backing disc is made of elastic PUR with a special 1/4" absorption coating.

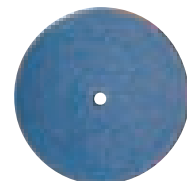
Diameter: 4-1/2" with 5/8"-11 thread - P/N: 80115U
Diameter: 6" with 5/8"-11 thread - P/N: 80150U



Special FIX Backing Pad with Centering Pin without Foam

For use with the FIX Zirconium disc, FIX TZ Pyramid disc and FIX SuperPolish disc. The backing disc is made of special elastic material with a centering pin for perfect alignment.

Diameter: 4-1/2" with 5/8"-11 thread - P/N: 80115S
Diameter: 6" with 5/8"-11 thread - P/N: 80150S



FIX Zirconium Disc

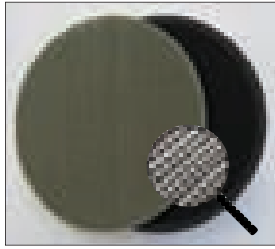
Abrasive disc with Hook & Loop fastening and an outstanding grinding capacity. Ideal for body shops and car workshops.

Diameter: 4-1/2"; Grits: 40, 60, 80, 120

FIX Zirconium Disc Ordering Information

Part No.	Diameter	Grit	Quantity
80904	4-1/2"	40	50 pack
80906	4-1/2"	60	50 pack
80908	4-1/2"	80	50 pack
80909	4-1/2"	120	50 pack
80914	6"	40	50 pack
80916	6"	60	50 pack
80918	6"	80	50 pack
80919	6"	120	50 pack

More Abrasives for the FIX Hook & Loop System



FIX TZ Pyramid Disc
New abrasive fabric with pyramid-shaped grit structure for high material removal while producing a very fine finish. FIX TZ Pyramid discs reduce the amount of work required compared to grinding belt sleeves and fleece sleeves. Ideal for pre-polishing for mirror finishes and for removing scratches and spot welds. An additional absorption coating drastically reduces the grinding temperature and protects the Hook & Loop components and the workpiece.

Diameter: 4-1/2" and 6"; Grits: A65, A45, A30, A16, A06 (see grit equivalents below)

FIX TZ Pyramid Disc Ordering Information

Part No.	Diameter	Grit	Quantity	Grit Equivalents
80932	4-1/2"	A65/320	10 pack	A100 = Grit 220
80940	4-1/2"	A45/400	10 pack	A65 = Grit 320
80960	4-1/2"	A30/600	10 pack	A45 = Grit 400
80970	4-1/2"	A16/1200	10 pack	A30 = Grit 600
80980	4-1/2"	A06/2000	10 pack	A16 = Grit 1200
80985	6"	A65/320	10 pack	A06 = Grit 2000
80986	6"	A45/400	10 pack	
80987	6"	A30/600	10 pack	
80988	6"	A16/1200	10 pack	
80989	6"	A06/2000	10 pack	

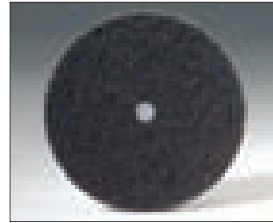
When polishing with **FIX SuperPolish Discs**, use a separate SuperPolish disc for each compound and cream. The different compound grits must not be mixed. Remove compound and cream residues from the workpiece after each stage using **POLY-PTX®** lime and a microfiber cloth.



FIX SuperPolish Disc
SuperPolish is a new, special needle fleece that produces a perfect, brilliant mirror finish on stainless steel and nonferrous metals. Used with our polishing compounds (white and blue) and pink cream to avoid smears and shadows. SuperPolish is absorbent, does not smear and saves time.

Diameter: 4-1/2"; Thickness: 1/4"
Part Number: 80715N (10 pack)

Diameter: 6"; Thickness: 1/4"
Part Number: 80750N (10 pack)



FIX Fleece (Nonwoven) Disc
Versatile disc for fine surface conditioning and pre-polishing.
Diameter: 4-1/2" and 6"
Grits: coarse, medium, fine, superfine

FIX Fleece (Nonwoven) Disc Ordering Information

Part No.	Diameter	Grit	Quantity
80615	4-1/2"	coarse (brown)	10 pack
80616	4-1/2"	medium (red)	10 pack
80617	4-1/2"	fine (blue)	10 pack
80618	4-1/2"	superfine (grey)	10 pack
80650	6"	coarse (brown)	10 pack
80651	6"	medium (red)	10 pack
80652	6"	fine (blue)	10 pack
80653	6"	superfine (grey)	10 pack



FIX-Klett (Nonwoven) Disc
The new FIX-Klett disc is a superfine soft nylon-fleece material for prepolishing aluminum or other soft, nonferrous materials to a mirror finish.
Diameter: 4-1/2"; Superfine grit
Part Number: 80680 (10 pack)
Diameter: 6"; Superfine grit
Part Number: 80690 (10 pack)



FIX SuperPolish Felt Disc
Special merino wool felt that produces a perfect, brilliant mirror finish on stainless steel and nonferrous metals. Used with our polishing compounds (white and blue) and pink cream to avoid smears and shadows.

Diameter: 4-1/2"; Thickness: 1/4"
Part Number: 80715 (10 pack)

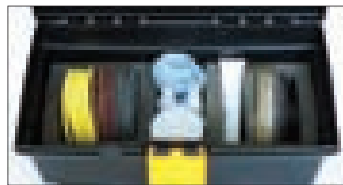
Diameter: 6"; Thickness: 1/4"
Part Number: 80750 (10 pack)

FIX Hook & Loop System Kits



FIX Starter Kit Part Number: 80050U

- 1 VARILEX® WSF 1600, 110V, 5/8" spindle
- 1 Carrying Case
- 1 FIX backing pad - 4-7/16"
- 1 Wheel guard for discs up to 5"
- 3 FIX fleece discs 4-1/2" (1 each - coarse, medium, fine)
- 1 EASY-LOCK SPEED NUT
- 2 FIX FLEECE TOP 4-1/2" (1 each - grit 80, 180)
- 2 FIX flap discs 4-1/2" (1 each - grit 40, 60)
- 2 FIX SuperPolish discs 4-1/2"
- 1 FIX clean 4-1/2"
- 1 Lime spray can
- 4 FIX zircon discs 4-1/2" (1 each - grit 40 - 120)
- 2 Mini-polishing pastes, white and blue



FIX Test Kit Part Number: 80051U

- 1 Carry Case
- 1 FIX backing pad
- 8 FIX Zirconium discs 4-1/2" (2 each - 40, 60, 80, 120 grit)
- 10 FIX TZ Pyramid discs 4-1/2" (2 each - 320, 400, 600, 1200, 2000 grit)
- 8 FIX Surface Conditioning discs 4-1/2" (2 each - coarse, medium, fine, superfine)
- 6 FIX SuperPolish discs 4-1/2"
- 2 Mini-polishing pastes, white and blue
- 1 PTX polishing cream pink
- 1 PTX Lime in a can
- 2 PTX microfiber cloths
- 1 Sample size PTX Poly Protection
- 1 Sample size PTX Brilliance Clean

TIPS & TRICKS

Perfect mirror finish on stainless steel and nonferrous metals

The new TZ Pyramid and SuperPolish discs for the FIX Hook & Loop system can be used with an angle grinder to create perfectly polished finishes on stainless steel and non-ferrous metals.

Pre-grinding to remove scratches and level welds using TZ Pyramid discs with grit A30.

Fine grinding using TZ Pyramid discs with grit A16.

These two stages prepare the surface for polishing. TZ Pyramid is an aggressive abrasive, so there is no need to slowly increase the grit fineness. Use only contact pressure to grind – the weight of the grinder is generally sufficient.

Pre-polish with SuperPolish disc and white polishing compound.

Main polish with SuperPolish disc and blue polishing compound.

Perfect mirror finish with SuperPolish disc and pink cream.

Use a separate SuperPolish disc for each step – the different compound grits must not be mixed. Remove compound and cream residues after each stage using POLY-PTX® lime and a microfiber cloth.



Benefits of reduced sparking:

- Workpiece visibility is improved, allowing more accurate grinding
- Reduced fire hazard from sparks

REDUCED SPARKING GRINDING DISCS

Designed for grinding steel, stainless steel and other materials in nuclear plants, oil and gas industries and applications where spark reduction is an important feature.

Eco Brazing (EB) diamond grinding discs from CS Unitec reduce sparking to 1% of that produced by resinoid wheels, making EB diamond a better choice than resinoid for use in some hazardous environments.

- Diamond grit protrudes higher off the EB diamond disc than traditional diamond wheels, providing greater durability, longer service life and ease in cutting
- High-tensile steel backing disc reduces plate thickness for a lightweight wheel that allows for high-rotation grinding
- High yield strength makes the steel backing disc elastic, helping to ensure that operators do not grind the material by over-removal
- Reduced sparking increases the visibility of the workpiece
- The EB diamond wheel wears approximately 1% as much as a resinoid wheel, therefore significantly reducing the amount of abrasive dust emitted
- Ideal for grinding steel and stainless steel, as well as natural stone, granite, marble, fiberglass and other materials



Resinoid Grinding Disc at 10,000 RPM

EB Diamond Disc at 10,000 RPM

EB diamond grinding discs reduce sparking up to 1/100 of that produced by resinoid grinding wheels (inset left).



Resinoid Grinding Disc at 6000 RPM

EB Diamond Disc at 6000 RPM

EB DIAMOND DISC Specifications

Dimensions	Diameter: 4", 7"
Max. speed	13,000 RPM (4") or 8500 RPM (7")
Ideal speed	6000 RPM (4") or 3300 RPM (7")
Grits	30, 40, 50, 60, 80
Arbor size	7/8"

EB DIAMOND DISC Ordering Information

Order No.	Size (dia. x arbor)	Grit	Max. Speed	Quantity
EB4007830	4" x 7/8"	30	13,000 RPM	1 disc
EB4007840	4" x 7/8"	40	13,000 RPM	1 disc
EB4007850	4" x 7/8"	50	13,000 RPM	1 disc
EB4007860	4" x 7/8"	60	13,000 RPM	1 disc
EB4007880	4" x 7/8"	80	13,000 RPM	1 disc
EB7007830	7" x 7/8"	30	8500 RPM	1 disc
EB7007840	7" x 7/8"	40	8500 RPM	1 disc
EB7007850	7" x 7/8"	50	8500 RPM	1 disc
EB7007860	7" x 7/8"	60	8500 RPM	1 disc
EB7007880	7" x 7/8"	80	8500 RPM	1 disc

Though EB diamond discs have been shown to reduce sparking, we make no claim that sparking will be eliminated. Follow all appropriate safety regulations (ATEX, OSHA, ANSI) for all grinding applications, including those for working in hazardous environments.

REDUCED SPARKING DIAMOND GRINDING AND CUTTING DISCS

Caution: User must follow all appropriate safety regulations when choosing a tool for their particular working environment.

Follow all appropriate safety regulations (ATEX, OSHA, ANSI, etc.) for all grinding applications, including those for working in hazardous environments. Follow all appropriate OSHA and international safety regulations for grinding metal, fiberglass, hard plastics and more.

- Last 100x longer than ordinary resin bonded wheels
- Reduce sparks, dust and material waste
- Save time changing discs
- Ideal for grinding and cutting steel, stainless steel, aluminum, titanium, fiberglass and more



EB Cut Off Wheels – "Slicer" for cutting metal and more

Eco Brazing (EB) diamond cutting wheels from CS Unitec are designed for cutting steel and stainless steel pipe, tubing, bolts and plate, as well as composites, fiberglass and other materials.

Order No.	Size (dia. x arbor)	Grit	Max. Speed	Quantity
EBC4007850C	4" x 7/8"	50	13,000 RPM	1 disc
EBC4507830C	4-1/2" x 7/8"	30	13,000 RPM	1 disc
EBC4507850C	4-1/2" x 7/8"	50	13,000 RPM	1 disc
EBC5007850C	5" x 7/8"	50	13,000 RPM	1 disc
EBC6007830C	6" x 7/8"	30	8500 RPM	1 disc
EBC6007850C	6" x 7/8"	50	8500 RPM	1 disc
EBC7007850C	7" x 7/8"	50	8500 RPM	1 disc
EBC9007850C	9" x 7/8"	50	8500 RPM	1 disc



EB Combination (Grinding – Cutter) Wheels

Eco Brazing (EB) diamond combination metal grinding and cutting wheels from CS Unitec are designed for grinding and cutting steel and stainless steel bolts and plate.

Order No.	Size (dia. x arbor)	Grit	Max. Speed	Quantity
EB4007835CM	4" x 7/8"	35	13,000 RPM	1 disc
EB4007850CM	4" x 7/8"	50	13,000 RPM	1 disc
EB4507835CM	4-1/2" x 7/8"	35	13,000 RPM	1 disc
EB4507850CM	4-1/2" x 7/8"	50	13,000 RPM	1 disc
EB5007835CM	5" x 7/8"	35	13,000 RPM	1 disc
EB5007850CM	5" x 7/8"	50	13,000 RPM	1 disc
EB7007835CM	7" x 7/8"	35	8500 RPM	1 disc
EB7007850CM	7" x 7/8"	50	8500 RPM	1 disc



EB Cluster (Cleaning – Grinding) Wheels

Eco Brazing (EB) diamond cluster wheels from CS Unitec are designed for removing paint, rust and epoxy on metal. Also for high material removal on fiberglass, composites and plastics without loading up like traditional abrasives.

Order No.	Size (dia. x arbor)	Grit	Max. Speed	Quantity
EB4007880CLSF	4" x 7/8"	80	13,000 RPM	1 disc
EB4507880CLSF	4-1/2" x 7/8"	80	13,000 RPM	1 disc
EB5007880CLSF	5" x 7/8"	80	13,000 RPM	1 disc
EB6007880CLSF	6" x 7/8"	80	8500 RPM	1 disc
EB7007880CLSF	7" x 7/8"	80	8500 RPM	1 disc

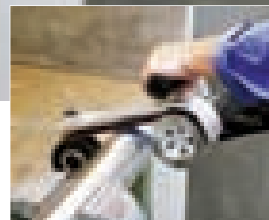
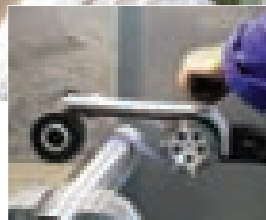
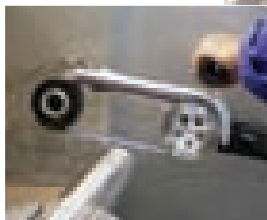
PIPE-MAX

Pipe Belt Grinder

The PIPE-MAX is a combination grinder and pipe belt sander. The front hard rubber contact roller drives the abrasive belt to grind flat surfaces. It removes weld seams in a straight line, without leaving edges or a wavy finish.

For sanding pipes or handrails, it is a flexible tool. The sanding belt follows every contour to grind and polish up to a high-gloss finish. The belt wraps around the pipe and requires only a few steps to polish the entire circumference. It is ideal for stainless steel, aluminum and high-quality metals.

- For sanding pipes from small to large diameter, up to 14"
- Grinds weld seams on flat surfaces – leaves no edges
- Powerful 14.5 Amp motor and variable-speed control from 950 to 3500 RPM
- Quick and easy changing of sanding belts
- Ideal for stainless steel and aluminum



You can follow the external contour of the pipe diameter with light, uniform contact pressure. The new contour concept with the elastic return roller allows the grinding and polishing belts to conform around the external diameter of the pipes without great force.



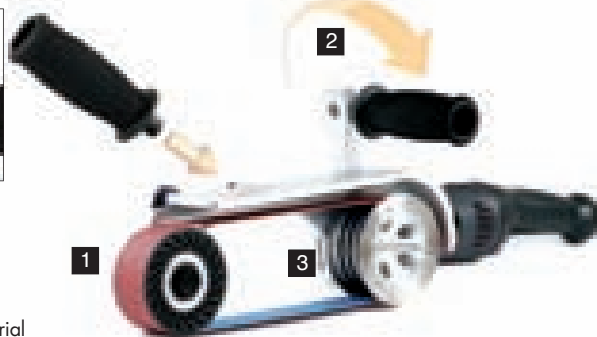
1 Gas pressure cylinder allows belt to conform to contour of pipe with proper pressure.



2 Additional handle for comfortable, overhead working.



3 The drive roller with the rubber rings ensures that the grinding belts will not slip.



The soft grinding roller made of PUR material also allows comfortable longitudinal grinding of flat surfaces, for example to remove spot welds or eliminate deep scratches.

Pneumatic Pipe Sander also available. (LBR1506 AIR)
See price list for details.

PIPE-MAX Specifications

Order Number: 38502A	
Belt size (L x W)	30.7" x 1.6"*
Belt speed	33 - 100 ft./sec.
Power	14.5 Amp (1600 Watts) 110V
Pipe ø max.	14"
Weight	11.25 lbs.

Standard Equipment

1 PIPE-MAX basic machine, 110 V	2 PIPE-MAX SC-fleece belts, medium
1 QUICK-LOCK cable, 10 feet	2 PIPE-MAX SC-fleece belts, fine
1 additional handgrip	3 spare rubber rings
PIPE-MAX grinding belts, 2 each grits 40, 60, 80 and 120	

220 Volt also available. * Note: Exact belt size is 40mm x 780mm

PIPE-MAX Accessories

All PIPE-MAX Belts shown below: Belt Size – 30.7" x 1.6" (780mm x 40mm) • 10 belts per package

Abrasive Grinding Belts		Abrasive Surface Conditioning Fleece Belts		Abrasive Grinding Belts – Ceramic		TZ Pyramid Belts		SuperPolish Belt	
Grit	Part No.	Grit	Part No.	Grit	Part No.	Grit	Part No.	Part No.	38850
24	38523	Coarse (brown)	38531	24	38124	A100/220	38544		
40	38524	Medium (red)	38532	36	38136	A65/320	38545		
50	38525	Fine (blue)	38533	40	38140	A45/400	38546		
60	38526	Superfine (grey)	38534	60	38160	A30/600	38547		
80	38528			80	38180	A16/1200	38548		
120	38525			100	38100				

QUICK-LOCK Cable (Qty: 1) Length: 10 ft. (standard, included)

BOA PIPE SANDER

Electric or Pneumatic

All-around polishing solution for handrails, pipe and tubing.



The LRP 1503 Boa Pipe Sander is the perfect solution for sanding and polishing pipe constructions. The sanding arm snakes up to 270° around the radius of the pipe. The operator simply rotates the BOA slightly to achieve a full 360° finish. Spring resistance between the deflection rollers ensures that the sanding arm and belt are always uniformly tensioned. The BOA saves time finishing stainless steel and other ferrous and nonferrous pipe.

- Variable-speed control; 12 to 40 ft./sec. belt speed
- Maximum pipe Ø: 5" diameter
- Quick, tool-free replacement of sanding belt
- High-quality 270° sanding arm is made of light alloy with two deflection rollers for quick progress, perfect finish and simple operation
- Additional side handle can be rotated 180° in narrow spaces



LRP 1503 VRA with sanding belt

Electric or Pneumatic

BOA Accessories

Abrasive grinding belt (10/pkg.)

Size	Grit	Part No.
30" x 1-1/2"	24	326 706
30" x 1-1/2"	36	326 712
30" x 1-1/2"	60	326 723
30" x 1-1/2"	80	326 739
30" x 1-1/2"	120	326 755
30" x 1-1/2"	220	326 771
30" x 3/4"	120	326 801
30" x 3/4"	220	326 836

Surface conditioning fleece belt (3/pkg.)

Size	Grit	Part No.
30" x 1-1/2"	Coarse (brown)	326 895
30" x 1-1/2"	Medium (red)	326 879
30" x 1-1/2"	Fine (blue)	326 852

Sanding-Polishing Belt (1/pkg.)

For high-gloss polishing, without polishing agents, in two steps

Size	Grit	Part No.
30" x 1-1/2"	600	326 917
30" x 1-1/2"	1500	326 933

Electric BOA Pipe Sander

Order Number: LRP 1503 VRA

Power	11 Amp
Belt speed	12 - 40 ft./sec.
Belt dimensions	30" x 1-1/2" or 3/4"*
Weight	8.2 lbs.

Pneumatic BOA Pipe Sander

LRP 1503 AIR

Power	1 HP
Belt speed	28 ft./sec.
Air consumption	20 CFM @ 90 PSI
Weight	8 lbs.

Standard Equipment

1 carrying case with padding
1 abrasive grinding belt, grit 80, 30" x 1-1/2"
1 abrasive grinding belt, grit 120, 30" x 3/4"
1 abrasive grinding belt, grit 220, 30" x 3/4"
1 surface conditioning fleece, fine, 30" x 1-1/2"
1 surface conditioning fleece, medium, 30" x 1-1/2"
1 super polish belt, grit 600, 30" x 1-1/2"
1 super polish belt, grit 1500, 30" x 1-1/2"

* Note: Exact belt size is 760mm x 40mm or 20mm

FINGER BELT SANDER *Variable-speed*

Ideal for angles and tight spaces, as well as pipes and curves. The swivel-mounted arm, with 140° flexibility, reaches into corners, grooves and folds.

The LBS 1105 VE finger belt sander saves time grinding in confined and difficult areas. It uses belt sizes 3/16" to 1-1/8" wide by 21" long. The sanding arm rotates up to 140° for reaching into corners, grooves and folds, including pipes and curves.

The finger sander is ideal for grinding, blending, polishing and deburring ferrous and nonferrous metal. It also works on wood, plastic, fiberglass and other material. Speed is adjustable from 13 to 39 ft./sec.



LBS 1105 VE with 3/8" sanding arm. Interchangeable 1-1/8" arm shown at right.



Finger Belt Sander Accessories

Abrasive sanding belt (10/pkg.)

Size	Grit	Part No.
3/16"	60	303 615
3/16"	120	303 623
3/8"	40	257 101
3/8"	60	257 105
3/8"	120	257 102
3/8"	220	257 103
1-1/8"	60	255 328
1-1/8"	120	255 329
1-1/8"	220	255 330

Surface conditioning fleece belt (3/pkg.)

Size	Grit	Part No.
3/8"	Medium (red)	318 663
3/8"	Fine (blue)	318 671
1-1/8"	Medium (red)	318 647
1-1/8"	Fine (blue)	318 655

SuperPolish Belt (1/pkg.)

For high-gloss polishing, without polishing agents, in two steps

Size	Grit	Part No.
1-1/8"	600	318 132
1-1/8"	1500	318 140

Optional Equipment

(1) 3/8" sanding arm (curved) – Part No. 256 532

(1) 1-1/8" sanding arm (large roller) – Part No. 258 888



Narrow filing arm and 140° adjustability allow sanding and grinding in confined and difficult areas.



Finger Belt Sander Specifications

Order Number: LBS 1105 VE

Belt speeds	13 to 39 ft./sec.
Motor	6.1 AMP
Weight	5.5 lbs.

Standard Equipment

- (1) 3/8" sanding arm (pointed) – Part No. 256 525

- (1) abrasive belt kit, grits 40/120/220 – 1 set

- (1) side handle – 194 034

- (1) hexagon socket screw key – 115 460

Standard equipment includes a metal carrying case.



Angle Grinders, Sanders & Polishers

Electric and pneumatic for concrete and metal.

CS Unitec offers a variety of angle grinders, sanders and polishers to satisfy your most demanding needs. High torque output, variable speed and powerful motors make them ideal for use in metal fabrication, construction, shipyards, refineries, power plants and other heavy industries. Integrated dust extraction guard and vacuum systems are available for some models.



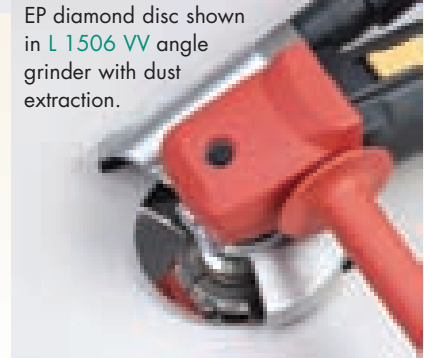
L 1509 FR
5" Angle Grinder
(10,000 RPM)
Perfect for spot jobs and edging on concrete surfaces.



L 1509 AIR
Pneumatic
(6500 RPM)



L 1506 VV
Electric
(2200 to 6800 RPM)



EP diamond disc shown in L 1506 VV angle grinder with dust extraction.



EBS 125 Concrete Grinder
(10,000 RPM)
Perfect for concrete surface preparation and smoothing.



See page 34 for Angle Grinders/Sanders with Dust Extraction and Dust Extraction Vacuums.



TIPS & TRICKS

EASY-LOCK SPEED NUT SAVES TIME, WEIGHT AND MONEY!

Never has changing a grinding disc been so quick and efficient

The secret behind it – the self-clamping **EASY-LOCK SPEED NUT**

P/N 65008-1 (5/8"-11 UNC)

The **EASY-LOCK SPEED NUT** allows abrasive discs to be changed in seconds without tools. The **SPEED NUT** works with any abrasive with a hemp or ABS backing plate and a 7/8" arbor. That means you can change abrasives on an angle grinder in a matter of seconds. It easily hand tightens and eliminates the need for wrenches or heavy, expensive 5/8"-11 hubs.

The clamping collar shape on the top of the **EASY-LOCK SPEED NUT** can secure flap discs and abrasives with a "thicker" backing disc as well as centering them. "Thin" abrasives such as cutting discs, etc. can simply be secured using the reverse of the **EASY-LOCK SPEED NUT** clamping nut.



1. Secure the disc loosely by hand using the SPEED NUT.
2. Press the spindle lock and tighten the disc by turning it clockwise by hand. That's all there is to it!
3. To release the disc, press the spindle lock and turn the disc counter-clockwise by hand.

Angle Grinders / Sanders with Dust Extraction

L 1506 VV 4" and 4-1/2", Electric
Extremely powerful 11 Amp angle grinder and sander with variable-speed electronic motor. Vacuum port: 1-1/4". Ideal for use with our **CS 1225** or **CS 1500** Dust Extraction Vacuum (see below).

L 1506 VV AIR 4" and 4-1/2", Pneumatic
Extremely powerful 1 HP angle grinder and sander with 1 HP pneumatic motor. Vacuum port: 1-1/4". Ideal for use with our **CS 1225** or **CS 1500** Dust Extraction Vacuum (see below).

Vacuum Port: 1-1/4"

L 1506 VV Specifications

	L 1506 VV	L 1506 VV AIR
Max. diameter	4-1/2"	4-1/2"
Speed	2200 - 6800 RPM	6000 RPM
Power	11 Amp	1 HP
Spindle	5/8"-11	5/8"-11
Weight	4 lbs.	4 lbs.
Air consumption	-	33 CFM @ 90 PSI
Air connection	-	1/4"



L 1506 VV with dust extraction (2200 to 6800 RPM)

5/8" Spindle
7/8" Arbor



Stepped Adapter (optional) adapts vacuum port to a 1-1/4" dia. hose
Part Number: 5.453-016



L 1506 VV AIR (6000 RPM)
(Hose not included)

5/8" Spindle
7/8" Arbor



CS 1500



CS 1225

Dust Extraction Vacuums for Tools

CS Unitec's dust extraction vacuums offer strong 130 CFM air flow and an automatic filter cleaning system to maximize vacuum power and dust collection. The "Power Take-off" outlet activates the ON/OFF mode from the tool switch, making these vacuums ideal for use with power tools. Manual ON/OFF is necessary for pneumatic tools.

- Ideal for use with power tools
- 99.93% filtration efficiency of particles 0.3 microns is standard. HEPA vacuums are available.
- Can also be used as a regular wet/dry vacuum



Stepped adapter and 15' hose included as standard equipment with CS 1225 and CS 1500

Vacuum Specifications

	CS 1225	CS 1500
Power	11 Amp	11 Amp
Air flow	130 CFM	130 CFM
Tank capacity	6.6 gal.	13 gal.
Weight	24.3 lbs.	35.2 lbs.

We make no claim that use of a vacuum will eliminate contaminants. Wear an approved respirator mask and follow all appropriate OSHA safety regulations for proper ventilation, dust handling, eye protection, etc. when using a dust extraction grinder and vacuum.

Electric Grinder/Sander

L 1506 VR 4-1/2" and 5"

Compact, high-torque, variable-speed grinder/sander

This powerful 11 Amp, full-wave electronic grinder/sander has infinitely adjustable variable speeds (2200 to 6800 RPM) and overload protection. It is a versatile tool that is ideal for grinding, roughing, cutting, deburring and rust removal. This is a popular choice among the metal, automotive and natural stone industries.



L 1506 VR
(2200 to 6800 RPM)

Electric Grinder/Sander Specifications

L 1506 VR	
Max. diameter	5"
Speed	2200 - 6800 RPM
Power	11 Amp
Spindle thread	5/8"-11
Weight	4.2 lbs.

Pneumatic Angle Grinder

4-1/2" and 5"

1 HP mini grinder with 5/8" spindle

The L 1509 AIR is a powerful, lightweight pneumatic angle grinder for grinding, cleaning, deburring, blending and smoothing. This lightweight, versatile angle grinder is ideal for use in the most demanding grinding and sanding applications.



L 1509 AIR
(6500 RPM)

Pneumatic Angle Grinder Specifications

Order Number: L 1509 AIR	
Power	1 HP
Speed	6500 RPM
Max. diameter	5"
Air consumption	33 CFM @ 90 PSI
Air connection	1/4"
Weight	4.25 lbs.

- Heavy-duty pneumatic motor (1 HP / 6500 RPM) stands up to continuous use
- Accepts both 4-1/2" and 5" grinding discs
- Spindle size: 5/8"-11 UNC
- Arbor size: 7/8"
- Removable side handle can be mounted on either side of the tool
- Spindle lock

Low-speed Polishers

For metal, stone, concrete, plastic, glass and more.

CS Unitec offers several polishing tools for both dry and wet applications. These tools feature either double or triple gear reduction for maximum torque with minimum motor load and a longer service life.

ELP 1300 Dry Polisher

Triple gear reduction, 650 to 1150 RPM.

CS Unitec's ELP 1300 polisher is the ideal tool for low-speed dry polishing, especially under heavy load. In combination with various accessories, the ELP 1300 can be used for automotive, wood and metalworking applications such as polishing, fine brushing, matte finishing and sanding. This polisher is particularly suited for materials such as acrylic lacquer, glass, plastics and corian.



Removable handle

ELP 1300 (650 to 1150 RPM)



- Triple transmission reduction for maximum torque with minimum motor load and a long lifetime
- Compact, nonslip handle balances weight distribution and minimizes vibrations
- Cover sheet for ventilation on the motor housing provides added dust protection
- Spindle stop for fast retooling
- Slim design for use in narrow spaces
- Ergonomic on/off switch with locking button

Powerful 12 Amp motor is ideal for slow-speed polishing in the automotive and furniture industries.

Dry Polisher	
Order Number: ELP 1300	
Power input	12 Amp (1300 W) 110 V / 60 Hz <small>(Also avail.: 230 V / 50 Hz)</small>
Speed	650 - 1150 RPM
Max. diameter	9"
Spindle thread	5/8"-11
Weight	6.4 lbs.

EPN 1310 P Wet Polisher EPO 1310 Dry Polisher

Double gear reduction.

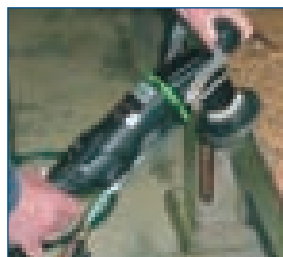
The EPO 1310 is a powerful polisher for dry applications such as sanding and polishing metal, stone, concrete and other materials. When used with diamond sanding discs and velcro fastener, it is effective for sanding edges and stone polishing within the workshop or at the construction site. Integrated dust protection for both motor and gear bearings.

The EPN 1310 P wet polisher for natural stone and concrete applications is particularly suited for grinding and polishing edges and curvatures. It also excels at removing scratches from granite, marble and concrete. This polisher is ideal for stone cutters, natural stone processing companies and concrete fabricators. Features external water supply below the motor to protect the gearbox and facilitate easy gear head guiding; no water flows across the motor or gearbox. GFCI switch, sealed motor and protected electronic components.

- Double gear reduction for maximum performance with minimum motor load and a long service life
- Spindle stop for fast retooling
- Slim design for use in narrow spaces
- Ergonomic on/off switch with locking button

CS Unitec...

Powered by Eibenstock



Removable compact nonslip handle

EPN 1310 P shown above

Dry Polisher	
Order Number: EPO 1310	
Power input	12 Amp (1300 W) 110 V / 60 Hz <small>(Also avail.: 230 V / 50 Hz)</small>
Speed	1300 - 3050 RPM
Max. diameter	5"
Spindle thread	5/8"-11
Weight	5 lbs.
Wet Polisher	
Order Number: EPN 1310 P	
Power input	12 Amp (1300 W) 110 V / 60 Hz <small>(Also avail.: 230 V / 50 Hz)</small>
3 speeds	1300 / 2175 / 3075 RPM
Max. diameter	5"
Spindle thread	5/8"-11
Weight	6.4 lbs.

Surface Preparation Equipment

Electric and air power for the preparation of concrete, steel and stone.



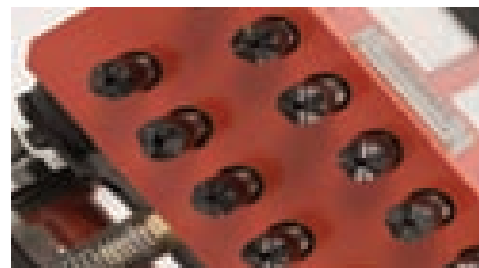
CS Unitec now offers even more innovative electric and pneumatic equipment for the preparation of steel, concrete and stone. These tools are ideal for industries, including: construction, floor preparation, utilities, marine & offshore, oil & gas, and nuclear decommissioning/remediation, as well as restoration, refurbishment and demolition.

Contact us for more information about our new line of surface preparation equipment.

Hand-held ScaleForce Scaling Hammers and Deck Hammers

Up to 33,000 blows per minute

Ideal for breaking down the hardest of coatings prior to abrasive blast cleaning, reducing cost of blast media and increasing surface preparation productivity. Widely used in the marine industry for removing rust, scale and paint from ship decks, as well as to descale tanks, bridge decks and floating platforms. Low vibration for operator comfort. Options include spark-resistant replacement heads for use in potentially hazardous environments and vacuum shroud to reduce dust.



Trelawny™ – ScaleForce

Peening Preparation Tools – Hand-held Scarifiers

Clean, economical alternative to small-area shot blasting



The PPT line of handheld scarifiers use 3M™ Heavy-duty **Rotopeen™** captive shot flaps or steel cutters for surface preparation. These units are ideal for the removal of alkyds, mastics, adhesives and coatings corrosion from a range of steel and concrete substrates. When part of a dust collection system, these tools more safely remove hazardous materials such as lead-based paints and contaminated particles quickly and cleanly.



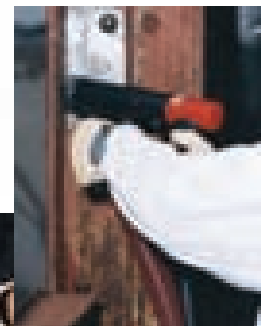
Rotopeen™



Needle/Chisel Scalers

Trelawny™ original Vibro-Lo™ low-vibration scalers

Lightweight, easy-to-handle pneumatic units provide up to 3000 blows per minute to remove coatings, corrosion and other accumulated materials. Ideal for all surfaces, especially irregular surfaces that are otherwise difficult to prepare. Also used for chipping, weld dressing and brick/stone cleaning. Optional in-line dust control systems to maintain worksite/environment cleanliness.





ROLEI® BE 5 Sheet Metal Deburring Machine – 2 Speeds

Double-sided deburring of sheet metal up to 0.2" thick can be achieved in a single operation with no additional treatment. The machine's flap wheels can be easily adjusted as they wear. One set of wheels lasts for approximately 6500 feet of stainless steel sheet. Supplied standard with two 80 grit flap wheels, the ROLEI® BE 5 can be used with other optional grits to suit the facet width and materials of your particular application.

Features two-speed operation:

- Speed 1: fine deburring, 600 RPM
- Speed 2: standard deburring, 1200 RPM

Optional accessories:

- Spare flap wheels (40, 60, 80, and 120 grit)
- Machine stand, made from strong steel
- Port for industrial dust extractor (part no. 30330)



Can also be used on its side with roller tables for large thin sheets.

ROLEI BE 5 Specifications

**Order Number: 30310A (220 Volt)
30310 (380 Volt)**

3-phase motor 220 - 240 V 3-phase / 2 speeds
.2 KW / .9 Amp
400 - 440 V 3-phase / 2 speeds
.2 KW / .45 Amp

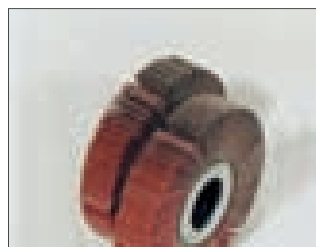
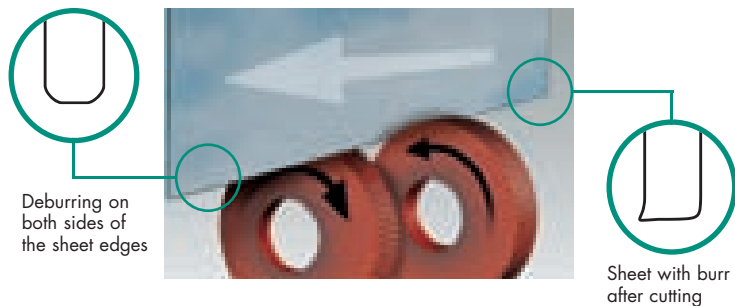
Dimensions 19.7" x 12.8" x 7.9"

Weight 64 lbs.

Options Machine stand, dust extractor connection port, teflon tape

ROLEI BE 5 Flap Wheels

Part No.	Grit	Qty.
37040	40	2 discs per pack
37060	60	2 discs per pack
37080	80	2 discs per pack
37120	120	2 discs per pack



Spare flap wheels for sheet metal deburring machine BE 5
Grit 40, 60, 80, 120



Machine stand - P/N: 30320
Strong steel machine stand with black powder coating



Dust extraction port (end and bottom views shown above)
P/N: 30330



Teflon protective tape - self-adhesive (2 required)
P/N: 30340 (19.75" length x 3/4" width)
P/N: 30341 (27.5" length x 3/4" width)
For extension rail to protect from scratching the workpiece

ROLEI® EF 115 Hand-held Deburring and Faceting Machine

This handy deburring machine is designed for awkward, heavy parts, such as machine tables, frame constructions or large sheets of metal. Easy to handle, with good edge control. The EF 115 is also ideal for chamfering welds. Fixed beveling angle of 45°, infinitely adjustable facet width from 0" to 3/8".



Rolei EF 115

110 V / 60 Hz
Variable speed: 2,000 to 7,600 RPM

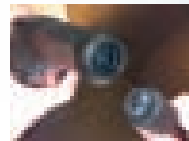
The handy ROLEI® EF 115 can deburr and facet large, heavy parts with ease. The precise edge control guarantees clean bevels at an angle of 45°.



ROLEI EF 115 Specifications

Order Number: 30116

Universal motor	12.27 Amp (1350 W) 110 V / 60 Hz (230 V / 50 Hz, 1600 W also available)
Speed	Infinitely adjustable from 2,000 to 7,600 rpm
Weight	9 lbs.
Options	Sliding guide rail, plastic (P/N 30117, 2-piece set)



QUICK-LOCK cable for fast, easy replacement, e.g. if the cable is damaged
10 ft., included.

Simple disc changing



ROLEI EF 115 Flap Discs

Part No.	Grit	Qty.
21050A	50	10 discs per pack
21060A	60	10 discs per pack
21080A	80	10 discs per pack
21120A	120	10 discs per pack

ROLEI® EF 165

Beveling and deburring machine for facets at an angle of 45°



Optional dust extraction port
P/N 30130



Beveling and deburring machine with a fixed beveling angle of 45° and an infinitely adjustable beveling width from 0" to 3/8" for all metals from stainless steel to aluminum. Precise adjustment of the face width using a hand wheel.

Optional accessories:

- Table extension (P/N 30110, 2 pieces, 5" x 13" each)
- Machine stand (P/N 30120)
- Extraction port for industrial dust extractor (P/N 30130)
- Spare flap discs (60, 80, 120 grit)



Machine stand
P/N 30120

Sturdy steel machine stand with black powder coating.



Extended support table
P/N 30110

Made of sliding grey cast material. 27-1/2" long



Spare flap discs

The flat disc with special hard compression for deburring machines. Self-sharpening and extremely long service life!

60 Grit P/N 36060
80 Grit P/N 36080
120 Grit P/N 36120

Rolei EF 165
Speed: 2800 RPM



ROLEI EF 165 Specifications

Order Number: 30101 (220 Volt)
30100 (380 Volt)

Motor	220, single-phase or 380 V, 3-phase
Support table	5" x 13"
Dimensions	14" x 13" x 12"
Weight	40 lbs.
Options	Table extension, machine stand, extraction port for dust extractor connection

Supplied as standard with 80 grit disc. Other grits can also be used to suit the face width and materials.

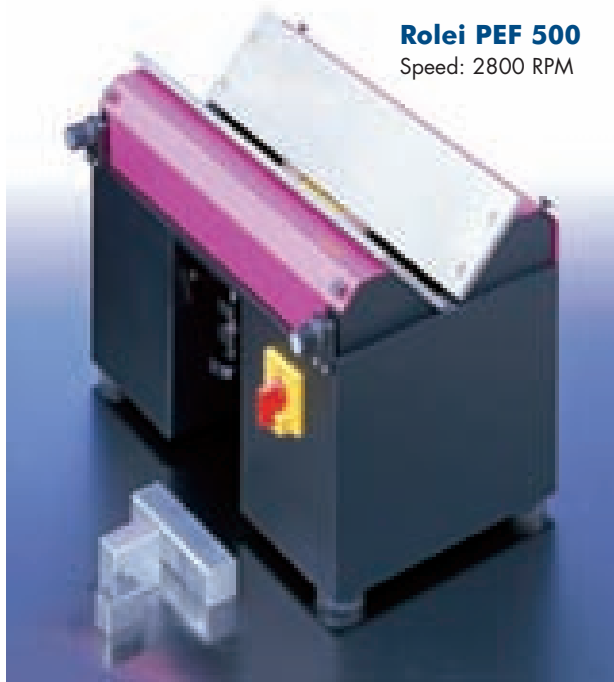
ROLEI® PEF 500

Beveling and deburring machine for facets at angles of 30° to 60°.

Precision beveling and faceting machine for all metals from stainless steel to aluminum. Infinitely adjustable beveling angle from 30° to 60° and infinitely adjustable face width from 0" to 3/8" (precise adjustment using knob).

Optional accessories:

- Table extension (guide rail) from 20" to 28" (P/N 30240)
- Extraction port for dust (P/N 30230)
- Sliding feed plate, plastic (P/N 30210)
- Spare flap discs (see below right)



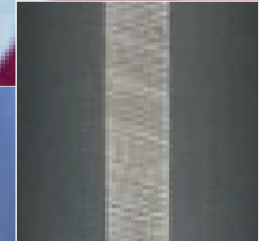
Rolei PEF 500
Speed: 2800 RPM

ROLEI PEF 500 Specifications

Order Number: 30201 (220 Volt)
30200 (380 Volt)

Motor	220, single-phase or 380 V, 3-phase
Dimensions	20" x 14" x 14"
Weight	88 lbs.
Options	Table extension, machine stand, extraction port for dust extractor connection

Supplied as standard with 80 grit disc. Other grits can also be used to suit the facet width and materials.



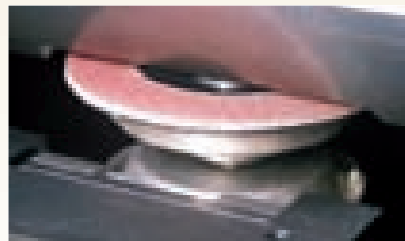
Parts are beveled with perfect cross-grinding – absolutely no opposite burr.



The face width can be adjusted precisely using a hand wheel.



The disc wear is adjusted using a hand wheel with a threaded spindle. The face angle can be adjusted using a motorized system.



The easily interchangeable flat flap disc produces a chamfer which creates zero opposite burr.

Spare flap discs
60 Grit P/N 36060
80 Grit P/N 36080
120 Grit P/N 36120



**Infinitely adjustable
facet angle from 30° to 60°**

Multipurpose Beveling Machine

Bevel, deburr and chamfer edges of steel plate faster and cleaner than angle grinders.

The EKF multipurpose beveling machine is designed to bevel 30° or 45° weld seams on steel, stainless steel, nonferrous metals, brass and plastics. It can also be used to deburr and chamfer; straighten edges, internal and external radii; and countersink holes from 7/8" diameter.

- Fine adjustment feature for slight chamfers when deburring for the preparation of weld seams
- Three milling head options – 30°, 45° and 2.5mm
- Ideal for the following applications: **Moldmaking** (straighten edges, internal and external radii and countersink holes from 7/8" dia.); **Boiler and process plant construction** (prepare weld seams on heat exchangers); **Mechanical engineering** (deburr machine parts, chamfer edges to protect against paint peeling and create visible edges); **Sheet metal** (deburr cut edges)



Fine adjustment
Precise control of chamfer when deburring for weld seam preparation


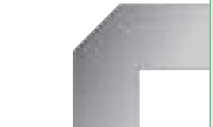

Portable Beveler Specifications

Order Number:	EKF 300.3	EKF 450.3	EKF 452.3
Beveling angle*	30°	45°	2.5mm
Bevel width (max.)**	1/4"	1/4"	1/4"
Motor power/Voltage	13.5 Amp/110 V (220 V / 50 Hz also available)		
Cutting speed	3000 SFPM		
Cutting Inserts	3		
Dimensions (L x W x H)	12-1/2" x 5-1/2" x 11-5/8"		
Weight	10.5 lbs.		

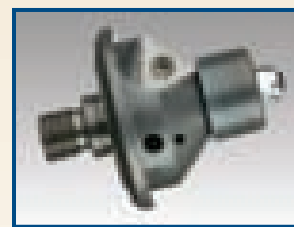
* EKF milling heads are interchangeable.

** Max. bevel width may require several passes, depending on material hardness

One Machine, Three Milling Options

30°	45°	R 2.5 radius
		
EKF 300.3	EKF 450.3	EKF 452.3
Milling cutter 30°, Chamfer 0 - 1/4"	Milling cutter 45°, Chamfer 0 - 1/4"	Milling cutter 2.5mm radius (optional)

Cutting Plates - Sold as pack of 10
Order No. **SHM 200**: 30° and 45°
Order No. **SHM 200-E**: 30° and 45° for stainless steel
Order No. **SHM 202**: 2.5mm radius



Standard equipment includes milling head and two inserts, SW22 key, carrying case and user's manual. Please see our Price List for available accessories.



The optimum fixture for stationary deburring of small parts (Order No. ZKF 100)

Portable Beveling Machine

Bevel angles from 15° to 60° on plate and pipes.

CS Unitec's SKF 25 Beveling Machine provides fast and easy preparation of weld seams and bevels 15° to 60° angles on plate or pipe. It is ideal for use on steel, stainless steel, aluminum and nonferrous metals and offers high-quality performance that allows for superior weld connections.

- Continuously adjustable angle (15° to 60°) and land width up to 3/4"
- Robust design, single operator control and easy handling; designed for continuous operation with smooth roller guides
- Includes one milling head and 10 total indexable inserts for fast metal removal and extended tool life
- Work on welding angles and weld preparation on pipes/tubes with a minimum OD of 6-1/4" (160mm) with built-in pipe roller guide; ideal for beveling pipe 6-1/4" OD and larger



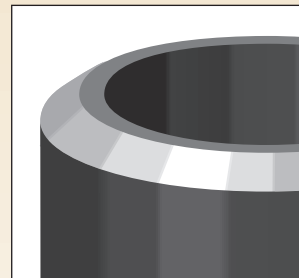
SKF 25

Portable Beveler Specifications

Order Number: **SKF 25**

Beveling angle	15° - 60°
Bevel width (max.)**	3/4"
Motor power	10 Amp
Voltage	110 V
	(220 V / 50 Hz also available)
Cutting speed	1800 SFPM
Cutting inserts	10
Dimensions (L x W x H)	16-1/2" x 13" (L x H)
Weight	43 lbs.

** Max. bevel width may require several passes, depending on material hardness



Single-operator, straightforward handling

Precise roller guidance, low friction resistance

Ideal for beveling pipe 6.25" OD and larger

Cutting Plates - Sold as pack of 20
Order No. **SHM 800**: for beveling carbon and stainless steel

Standard equipment includes one milling head, 10 sintered carbide reversible cutting inserts, tools for assembly, built-in pipe roller guide, steel carrying case and user's manual. Please see our Price List for available accessories.

Also available from UNITEC:

CS Unitec, Inc. specializes in electric, pneumatic and hydraulic power tools for construction and industry.

Innovation and high quality are synonymous with CS Unitec's power tools. In 1991, the company invented the first pneumatic portable band saw. CS Unitec has added to its list of industry firsts with the widest range of portable magnetic drills and hand-held concrete core drills. The line also includes electric, pneumatic and hydraulic portable band saws, reciprocating saws, hack saws, nut runners, rotary hammer drills, rolling motors, non-sparking tools, portable mixers, dust extraction tools and vacuum systems.

... the power of innovation!®

For more information, please visit our Web site at www.csunitec.com.



View product demonstrations at www.csunitec.com.

Electric, Pneumatic and Hydraulic Tools



Air Reciprocating Saws



Annular Cutters for fast, accurate hole cutting

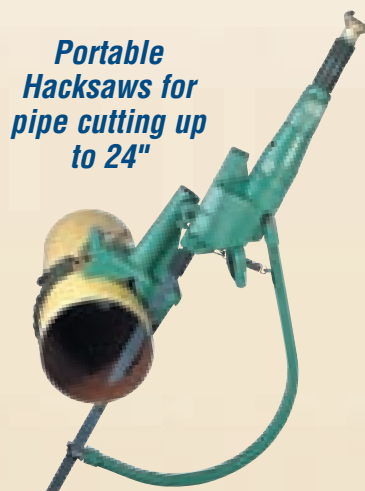


Slow-speed Drive Units for high-torque turning



Non-sparking Safety Tools

Electric Magnetic Drills for cutting up to 5 1/8" holes in metal



Portable Hacksaws for pipe cutting up to 24"



Electric, hydraulic and pneumatic Hand-held and Rig-mounted Core Drills for concrete; Water-recycling Vacuum also available



CS UNITEC, Inc.

22 Harbor Avenue, Norwalk, CT 06850

Phone 800-700-5919 • 203-853-9522 • Fax 203-853-9921

Email info@csunitec.com • www.csunitec.com