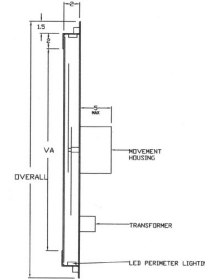
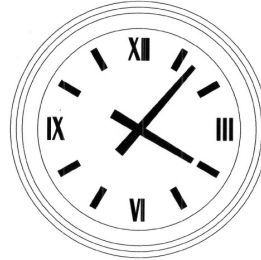


Exterior Clocks: 10 74 13

ELDERHORST BELLS, INC.

Semi-Flush Front Lighted Clocks - Available in sizes from 24" to 48" overall dia.



Semi-Flush Front Lighted Clocks are usually mounted on the exterior wall surface. This design of clock is lighted by a ring of LED lamps located at the front edge of the clock behind a decorative bezel. These clocks are limited in size to a maximum of 48" overall (41" viewing area). An area of "cut out" into the wall surface is required to allow for the clock movement and lighting power supply. Surface mounting adapters are available.

Features:

-Clock Housing and Dial: Fabricated from 1/8" (0.125") thick aluminum sheet with a 1/8" (.125") thick white acrylic dial face. Additional support is provided by 3/4" aluminum box tubing. All structural elements are welded together for a rigid self supporting assembly. All hardware is of stainless steel.

-Clock Front/Perimeter Lighting Is provided consisting of LED lamps with matching power supplies.

-Clock Movements: Our standard EB-105 through EB-107 (dependent on clock diameter), minute impulse type clock movements are built in the U.S. by Elderhorst Bells, Inc. using all square cut brass spur gears, on stainless steel shafts, running in bronze bearings.

-Clock Dial Markings: are cut from black acrylic and are permanently bonded to the clock dial surface. Dial markings are available in a variety of standard styles or may be customized to your application.

-Clock Hands: Clock Hands are available in a variety of standard styles or can be customized to your application. Clock hands are cut from .090 aluminum and mounted to an appropriately sized hub with stainless steel mounting hardware. Each hand is balanced by means of a counterweight or balance rod for proper long term operation.

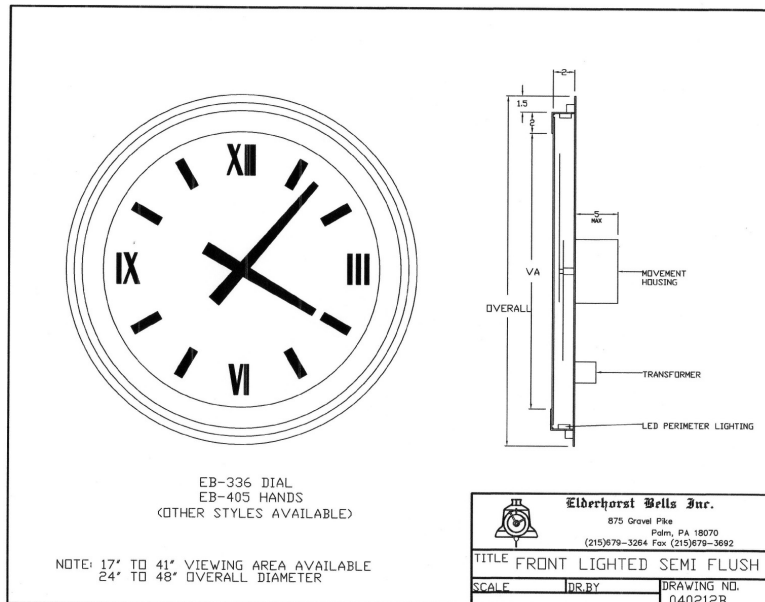
-Finishes/Materials: Finish all aluminum surfaces exposed to front viewing. Clock housing and hands shall be caustic etched, primed with two heavy coats of primer, and finished with two heavy coats of industrial enamel, (black standard). All concealed metal to be of mill finish aluminum



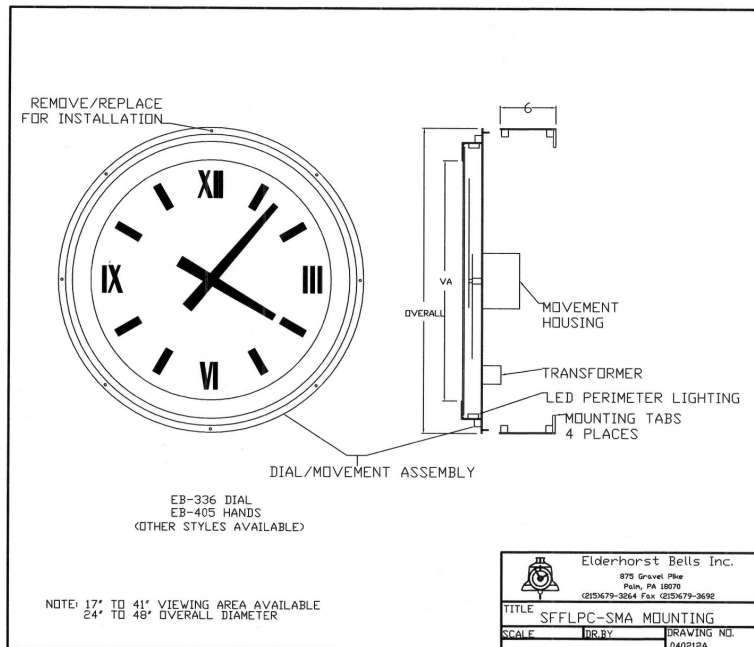
Elderhorst Bells, Inc.

875 Gravel Pike, Palm, PA 18070 215-679-3264, 800-810-7892, fax#215-679-3269

www.elderhorstbells.com info@elderhorstbells.com



STANDARD SEMI-FLUSH FRONT LIGHTED CLOCK – AVAILABLE IN OVERALL DIA. TO 48"



SEMI-FLUSH FRONT LIGHTED CLOCK WITH OPTIONAL SURFACE MOUNTING ADAPTER



Elderhorst Bells, Inc.

875 Gravel Pike, Palm, PA 18070 215-679-3264, 800-810-7892, fax#215-679-3269

www.elderhorstbells.com info@elderhorstbells.com