

Your Equipment

CONNECTION

A publication of F&M MAFCO, Inc.

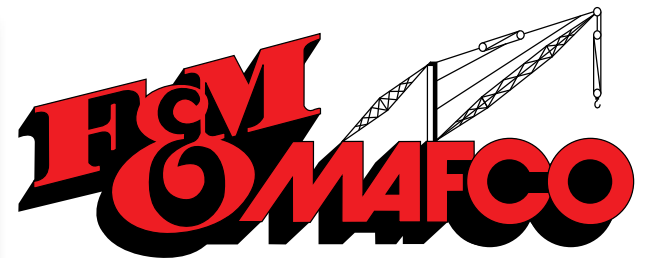
9149 Dry Fork Road
Harrison, Ohio 45030

Address Service Requested

Your Equipment

APRIL - JUNE 2013

CONNECTION



The Powerful Solutions People!

Meldahl Hydroelectric Project at Captain Anthony Meldahl Dam in Foster, KY

AMERICAN S-70 STIFFLEG DERRICK, 500 TON CAPACITY

- American S70 derrick modified to accept Manitowoc #38 boom
- The derrick is equipped with 240' of #38 Manitowoc main boom
- Hoist is an American model 550, 2 drum, diesel powered with an electric swinger that runs on 3 phase 480 volt electric
- The main purpose of the derrick for this job is to lift and place the turbines for the hydroelectric dam construction
- Derrick uses 1-1/4" wire rope, 4800' for the boom hoist and 4200' for the main load line
- Derrick was contracted to make lifts up to 140 tons at a radius of approximately 160'

Sales • Service • Rental • Parts

CONSTRUCTION TOOLS, EQUIPMENT, WELDING,
CRANES, INDUSTRIAL GASES & SUPPLIES

Toll-Free: **1.800.333.2151**

World-Wide: **1.513.367.2151**

www.fmmafco.com

Project:

Ohio State University Cancer and Critical Care tower project at Wexner Medical Center in Columbus Ohio.

Equipment:

- Timberland Model ASD17-65
17 ton Capacity Adjustable Stiffleg Derrick
100' of working boom
35' tall mast
- Clyde Frame 6 Hoist
2 drum
Diesel Powered
36,000 SLP at stall on 1st layer

Customer Comment:

"In 10 Months, I estimate we made 6 to 7 thousand picks from 100# to 14,500#. All done efficiently and most importantly SAFELY. F&M MAFCO's responsiveness to mechanical issues met every promise."



www.fmmafco.com

Toll-Free: **1.800.333.2151**

CINCINNATI, OH • BIRMINGHAM, AL • CARSON CITY, NV • CHARLOTTE, NC • EDMONTON, AB CANADA • HOUMA, LA • KANSAS CITY, MO • UNITED KINGDOM

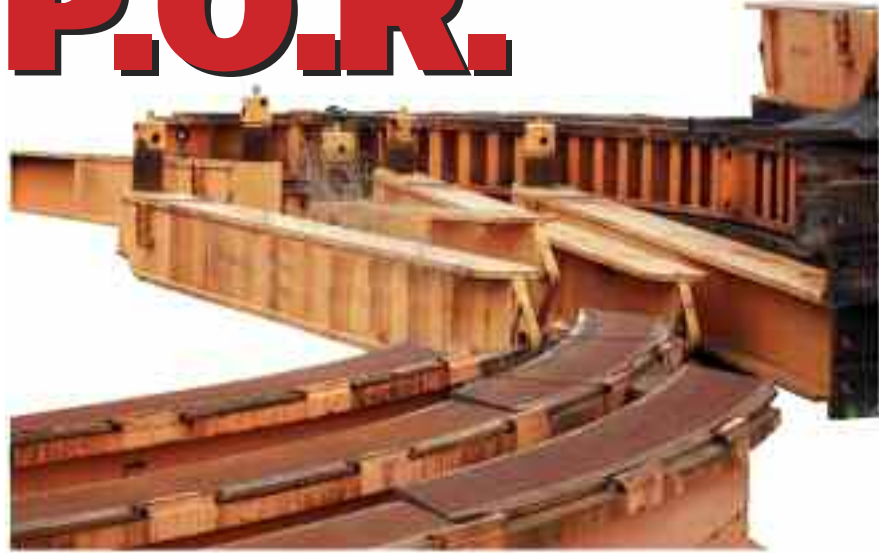
Manitowoc 4100 with ringer

Located in TENNESSEE

Contact: Bob Brooks or Bill McKenna

Call for Pricing
& Availability!

P.O.R.



Round Slings

The Single Source for Your Wire
Rope & Sling Requirements

www.QC21slings.com

Toll-Free: 1.800.333.2151

QC21 LIFTING
PRODUCTS
QUALITY CONTROL FOR THE 21ST CENTURY



On-Site Support Systems

Integrated Supplier "Preferred Vendor" Program



Stocked Shelves - Full View

Powerful Solutions from a Single Source!

- Billing improvement through consolidation
- Improved productivity – *right tool for the job*
- Flexible approach – manned / unmanned, outage / non-outage
- Minimize downtime – quality brands
- Customize inventory to fit your specific job scope
- Sales support
- Eliminate inventory carrying charges

Pay as you Pull

- Inventory / Proximity tied to critical path
- Bar-coding for ease of ordering
- Security
- Complete warehouse on-site for a minimum cost
- End of project buy back program
- Proven savings

On-Site Arc Certification System

F&M MAFCO's On-Site Arc Certification System is a mobile welder testing and training facility, that enables your welding tradesmen to remain on-site while performing training and certification activities, saving your company money on travel time and additional expenses.



www.fmmafco.com

World-Wide: 1.513.367.2151

CINCINNATI, OH • BIRMINGHAM, AL • CARSON CITY, NV • CHARLOTTE, NC • EDMONTON, AB CANADA • HOUMA, LA • KANSAS CITY, MO • UNITED KINGDOM

Caterpillar Generator Set

Contact: Mike Boone or Mark Griffith

Model D348, s/n 36J00520, rated 500KW, 625KVA, 277 / 480 vac, 3ph, 60 Hz.
 With EM Bemac II Series generator.
 New Controls, Inc. control panel with new exhaust silencer.
 All mounted on skid base.

Located in OHIO



Hangar For Sale

Contact: Bill McKenna

This hanger is 45,000 squared feet and 60 ft at the door peak;
 Able to accommodate a Gulfstream G5. The entire package
 weighs approximately 1 to 1.2 million lb. The hangar doors are
 fully motorized.

Located in ST. CROIX, USVI.



New Hoist Building at the Harrison, Ohio Facility

F&M MAFCO has constructed a building dedicated to
 our new and reconditioned hoists. This 6,400 square
 foot building currently houses 15 hoists ready to be
 rented or for sale.

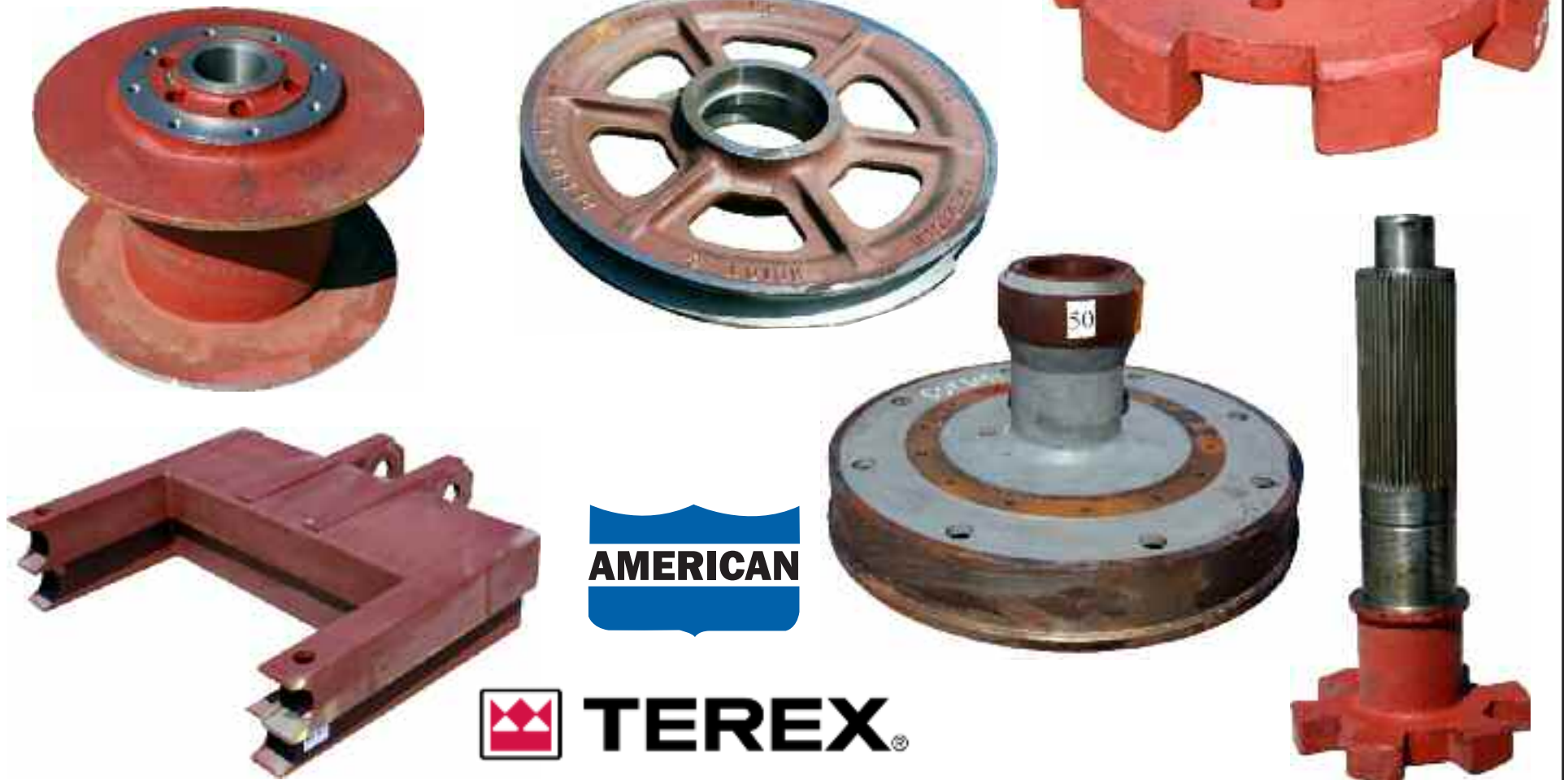


www.fmmafco.com

Toll-Free: 1.800.333.2151

CINCINNATI, OH • BIRMINGHAM, AL • CARSON CITY, NV • CHARLOTTE, NC • EDMONTON, AB CANADA • HOUMA, LA • KANSAS CITY, MO • UNITED KINGDOM

Over **2 MILLION DOLLARS**
of American and Terex parts recently
added to inventory



World Wide Equipment Repair

**World Wide Crane Repair
Service Available**

Contact:

Larry Kelhoffer

USA office: 1.513.367.8270
lkelhoffer@fmmafco.com

Tim Fox

UK office: 44.1284.787713
tfox@btconnect.com



www.fmmafco.com

World-Wide: 1.513.367.2151

CINCINNATI, OH • BIRMINGHAM, AL • CARSON CITY, NV • CHARLOTTE, NC • EDMONTON, AB CANADA • HOUMA, LA • KANSAS CITY, MO • UNITED KINGDOM

Braden Winches Model CH175A & CH12.5

Model CH175A, RATED LINE PULL 17,500 lb
Model CH12.5, RATED LINE PULL 12,500 lb

Located in OHIO

Contact: Mike Boone
mboone@fmmafco.com



Reconditioned Boom and Jib for Sale Bases, Tips, Inserts, Boom & Jib

Located in OHIO

Contact: Mike Boone



www.fmmafco.com

Toll-Free: 1.800.333.2151

CINCINNATI, OH • BIRMINGHAM, AL • CARSON CITY, NV • CHARLOTTE, NC • EDMONTON, AB CANADA • HOUMA, LA • KANSAS CITY, MO • UNITED KINGDOM

9 Gould Pumps "New Surplus"

Contact: Mike Boone, Pete Fromhold, or Mark Griffith

PART NUMBER: 3410 / GPM3190

- 14" Model 3410, rated 3190 GPM, 158' HD, 200 HP, (ID # P1)
- 14" Model 3410, rated 3190 GPM, 158' HD, 200 HP, (ID # REB-B266C3154-1)
- 14" Model 3410, rated 3190 GPM, 158' HD, 200 HP, (ID # P2)

- \$18,500 FOB Cincinnati, OH
- \$18,500 FOB New Haven, CT
- \$18,500 FOB Cincinnati, OH

PART NUMBER: 3410 / GPM4950

- 12" Model 3410, rated 4950 GPM, 120' HD, 200 HP, (ID # REB-266C355-1)
- 12" Model 3410, rated 4950 GPM, 120' HD, 200 HP, (ID # REB-266C355-2)
- 12" Model 3410, rated 4950 GPM, 120' HD, 200 HP, (ID # P5)

- \$16,500 FOB New Haven, CT
- \$16,500 FOB New Haven, CT
- \$16,500 FOB Cincinnati, OH

PART NUMBER: 3410 / GPM3960

- 12" Model 3410, rated 3960 GPM, 73' HD, 100 HP, (ID # P8)
- 12" Model 3410, rated 3960 GPM, 73' HD, 100 HP, (ID # P9)
- 12" Model 3410, rated 3960 GPM, 73' HD, 100 HP, (ID # REB-266C353-2)

- \$14,500 FOB Cincinnati, OH
- \$14,500 FOB Cincinnati, OH
- \$14,500 FOB New Haven, CT



American 11320 450 Ton Crawler Crane with Skyhorse



Located in OHIO

Contact: Bob Brooks or Bill McKenna



Call for Pricing & Availability!

P.O.R.

www.fmmafco.com

World-Wide: **1.513.367.2151**

CINCINNATI, OH • BIRMINGHAM, AL • CARSON CITY, NV • CHARLOTTE, NC • EDMONTON, AB CANADA • HOUMA, LA • KANSAS CITY, MO • UNITED KINGDOM

BidLift Strand Jack System

Contact: Dave Haag

Call for Pricing & Availability!

P.O.R.

Located in OHIO

Power Pack:

Hydraulic Power Packs with 8 x outlets are electrically driven. They come complete with radial piston pump, 20 liters per minute, giving a lifting speed of approximately 20 liters per hour. Power Packs are robustly constructed in a manner suitable for on-site use, with lifting eyes welded to the top of the enveloping crash frame, fork truck lift sleeves are built into the base. A control panel is incorporated with the Power Pack which provides synchronized operation of multiple jack systems incorporating selector switches which enable all individual, or any combination of jacks to be operated from a single control lever. For safety reasons, all control levers are the dead-man handle type. The design is catered for multi-line outputs of up to 20 liters per minute at continuous working pressures. Reduced flow outputs are incorporated for local fine positioning. The design is based on having 8 high pressure and synchronous outlets for extend and retract circuits for the 45 Ton main jack operation and auxiliary low pressure feed for mini jack sequencing. The 8 Pressure Transducers go directly to the main directional control valves, which alternate jack extension and retract operations in response to operator signals. Pressure control on the extend lines is adjusted by means of hand knobs adjacent to the operator position labeled as outlets: 1, 2, 3, 4, 5, 6, 7 and 8. Each will regulate from zero to 350 bars.

Power Unit Specification:

- Twin Motor Pump Units each with 4 Outlets
- Cetop 3 Control Valves
- Piston Pumps
- Relief Valves
- Pressure Gauge Panel
- Return Line Filter
- Oil Tank Heater
- Oil Cooler
- Mini Jack Motor Pump Unit
- Inlet Outlet Panel Complete with Flat Face Q/R/Couplings
- The power packs are designed for working in temperatures -20°C to +50°C
- The Power Pack will have:
 - IP65 Protection
 - 24 V Control Voltages Power Supply 3-phase neutral and earth
 - 60 Hz
 - 440V 65 feet Hose Sets for Main Jacks Complete with Flat Faced Quick Release Couplings

Strand Jacks:

Strand jacks are specially configured hydraulic jacks, which can give a continuous pulling or lifting movement. A combination of a number of strand jacks can lift loads as much as thousands of tons, whereas the jack itself weighs very less and occupies only a small footprint.

Hydraulic jacks are small devices that can do a large work using hydraulic pressure. Strand jacks use a combination of gripping and lifting to produce a continuous linear movement that can lift very heavy loads to great heights. These are especially very useful in lifting heavy loads in restricted areas. They are also simple to install and operate.

How does it work?

A number of strands (steel wires) arranged circumferentially passes through a hydraulic cylinder jack with anchors at both ends of the jack. The anchors have grips which alternatively grip and release the strands. The strand jack is positioned on a support beam vertically on top of the location to where the load has to be lifted. The load is connected to the strands by a suitable block.

To start, the upper anchor grips the strands and the hydraulic cylinder forces the anchor upwards together with the strand and the load connected to it. Once it reaches the stroke length, the lower grip, grips the strands preventing it from going down. The upper grip is released and the hydraulic cylinder strokes down to the bottom position. The upper grip then grips the strands and the lower grip is released. The cycle repeats itself creating a continuous linear movement, lifting the load.

How is it more effective than using a crane?

- Lifting a large load of 200 Ton requires a 350 Ton crane. A 350 Ton crane with all its accessories can weigh around 250 Ton. Mobilizing and de-mobilizing the crane, assembling the booms, having trained operators all are logistic headaches. Added to this, positioning the crane in restricted areas can also lead to very great difficulties. On the other hand, the jack itself is much smaller equipment, weighing only around 4 Ton. Even one operator can control the entire operation. The existing structures can be used to support the jack, or in other cases a temporary support system can be used. All these weigh considerably less than the crane. This makes the installation and use of the Strand Jack much easier.

- As the radial distance between the crane and the load point increases, it considerably reduces the lifting capacity of the crane. The jack applies the lifting force exactly in-line with the point of load, capacity is fully utilized.

- A number of jacks can be operated simultaneously by computers or hydraulic controllers to lift very large loads of thousands of tons. Even the tandem use of two cranes is a very difficult operation.

- A crane normally uses a single strand hoist with pulley sheaves to lift the load. Whereas, each strand jack uses multiple strands to lift the load. This adds to the redundancy and safety.

- In restricted areas where cranes do not have access, strand jacks are the best bet.

Strand jacks are being used more and more in lifting heavy loads all over the world.



(12) 45 Ton Capacity Strand Jacks complete with:

- Fixed Anchors
- Top and Bottom Fixed Anchor Blocks
- Threading Tubes
- Beringer Over Centre Valve
- Tension Port Pressure Transducer
- Bleed System for Final Positioning
- Complete with Anti Rotation Bar and Mini jacks.
- Each jack was fitted with a electronic monitoring system

Clyde Model 37 Revolver Crane

s/n CW-3938

Model 37-E-130-20

Located in MARYLAND

Contact: Bob Brooks or
Bill McKenna



Date Shipped New	08/31/1970
Ballast - Tons	550,000 lb
Ballast - Density	280 lb / ft ³
Tailswing	32' - 0"
Collector Rings Quality	5
Length to Main Fall	130'
Whip Extension	20'
Hanger Tackle Number of Parts	24 parts 1 1/8" WR
Hinge Spread	13' - 6"
Heel Bushings & Pins	Spherical Bushing
Load Indicator	Standard
Hook Capacity - Main	200 Ton
Hook Capacity - Auxiliary Whip	15 Ton
Main Load Drum	31,500 lb at 280 fpm 30" dia (Frame 12)
Whip Load Drum	15,500 lb at 400 fpm 20" dia (Frame 8)
Boom Drum	25,000 lb at 180 fpm 22 1/2" dia (Frame 9)
Main Hoist Electric	26726-9 300 H D.C.
Boom Hoist Electric	26730-3 150 H D.C.
Swing Electric	26734-26741(2) 75HP
Travel Speed	250 fpm
Rail to Boom Hinge	100' - 0"
Travel Rail Centers	40' - 0"
Rail Size	171"
Portal Height	30' - 0"
Truck Centers	48' - 0"
Wheels Per Corner	6
Diameter of Wheels	24"
Wheel Centers	36"
Maximum Wheel Load - Ton	132,900 lb

Galion 150P Hydraulic Pedestal Crane

- 30,000 lb Capacity
- 360° Swing
- 75° Boom Elevation
- Self-proportioning 3-Section Hydraulic Power Boom



SAFE LOADS

Model 150P Hydraulic Pedestal Crane

The rated lifting capacities shown are the maximum allowable loads covered by the manufacturers warranty. Regardless of the type of mounting, these allowable loads are based on the structural strength of the machinery components and must not exceed them. A load chart based upon tipping stability must not exceed the rated lifting capacity.

The weight of the hook block and all load handling devices are considered part of the load lifted and suitable allowances for them must be made to determine the net safe load.

Single line weighted hook block weight, 125 lb
Two-part line (single sheave) hook block weight, 100 lb

Two to five part line (three sheave) hook block weight, 360 lb

All booms should be operated as short as conditions permit.

PARTS OF LINE 1 2 3 4 5
RATED LOAD LB 6,000 12,000 18,000 24,000 30,000

Operating radius is the horizontal distance from the axis of rotation of the crane to the center of the hoist line with load applied.

3-SECTION POWER BOOM LOAD IN LB				4-SECTION POWER BOOM LOAD IN LB	
WORKING RADIUS IN FEET	BASIC	BASIC AND 8' EXTENSION	BASIC AND 18' EXTENSION	WORKING RADIUS IN FEET	BASIC
8	30,000	30,000	20,500	8	30,000
10	30,000	28,000	17,650	10	28,500
12	26,800	24,000	15,500	12	24,800
15	20,600	20,200	13,000	15	18,300
20	15,000	15,000	10,250	20	14,000
25	11,500	11,500	8,450	25	10,300
30	9,000	9,000	7,200	30	8,200
35	7,300	7,300	6,200	35	6,300
40		6,000	6,000	40	5,200
45		5,000	5,000	45	4,250
50			4,300	50	3,700
55				55	3,000
				60	2,600
				62	2,400

20' JIB CAPACITIES - LOAD IN LB						
JIB ANGLE	BOOM ANGLE					
	75°	70°	60°	50°	40°	30°
0°	6,000	6,000	5,300	3,900	3,000	2,500
15°	5,300	4,500	3,400	2,700	2,350	2,000
30°	3,400	3,000	2,500	2,150	1,850	1,500

The loads given on this chart are maximum allowable loads due to structural limitations of jib and boom. For tipping limitations, deduct 400 lb plus the weight of any load handling device from ratings given on the chart to determine safe working load at any given radius.

SPECIFICATIONS

Standard Equipment Features

20' to 40' 3-section telescopic power boom, removable boom point with 3 sheaves, 75° maximum boom elevation, 360° continuous rotation, 80 GPM tandem hydraulic pumps, engine air cleaner, muffler, adjustable "bucket type" seat, hour meter, electric fuel gauge, over-center check valves for crowd and boomlift cylinders, hook safety latch, automatic hoist and swing brake, cross line relief protection for winch and swing circuits and a 5-part line hook block.

General Dimensions

Weight (approximately) 21,000 lb
Length, overall 25'
Width, overall 7'
Height, overall minimum 7' 8 1/2"

Crane

Controls Hydraulic
Tandem Hydraulic Pumps 50 and 30 gpm

Crane Performance

Boom topping speed 17.5 sec
Boom lowering speed 15.5 sec
Swing speed rpm 3.85
Crows speed (approximately)
Extending, fpm 51
Retracting, fpm 71
Average Line Speed
Low, fpm 150
Intermediate, fpm 250
High, fpm 400
Standard rigging 5-part line
Maximum hook speed with 5-part line, fpm 80
Capacity See safe load charts

Winch Performance

Single-part line pull, max, bare drum, lb 7,500
Single-part line pull, rated, lb 6,200
Winch drum capacity 450' 9/16" cable

Boom (removable point with 3 sheaves)

Reach, horizontal, minimum 20'20"
Reach, horizontal, maximum (without extension) 40'2"
Swing, rotation continuous 360°
Elevation, maximum 75°
Tail swing, maximum 6'

Engine:

Detroit Diesel 4 - 53n*
Horsepower 127
Number of cylinders 4
Displacement 212.4"³
Bore 3.875"
Stroke 4.50"
Electrical system 12-V
Alternator 37 Amp

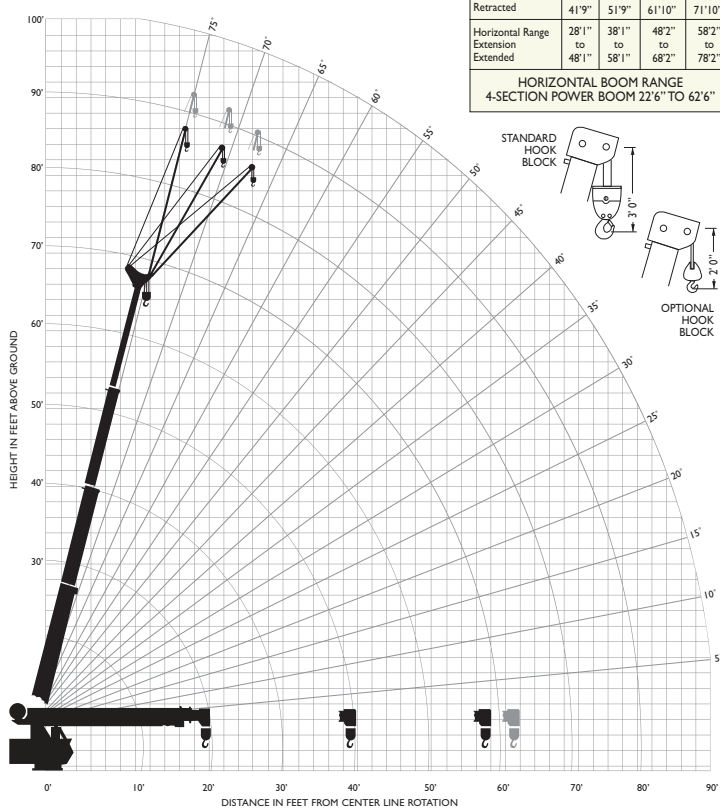
*50 HP Electric motor drive (1800 rpm, 230/460 volt; 3 phase, 60 Hz) also available.

Optional Equipment

- Four-section hydraulic power boom (22'6" to 62'6")
- 8' and 18' manual extensions (used with 3-section power boom)
- 20' jib and gantry
- 1500' capacity winch
- Deluxe enclosed cab
- Sound suppression kit
- Boom angle indicator
- Cab heater, hot water
- Boom floodlights
- High lift work platform
- Clamshell attachment
- Defroster fan
- Fiberglass workbasket

WORKING RANGES

Range of 3-section boom shown in black, 4-section boom shown in gray



Located in OHIO

Contact: Bob Brooks or Bill McKenna

www.fmmafco.com

World-Wide: 1.513.367.2151

CINCINNATI, OH • BIRMINGHAM, AL • CARSON CITY, NV • CHARLOTTE, NC • EDMONTON, AB CANADA • HOUMA, LA • KANSAS CITY, MO • UNITED KINGDOM

Model 11750 Pedestal Crane

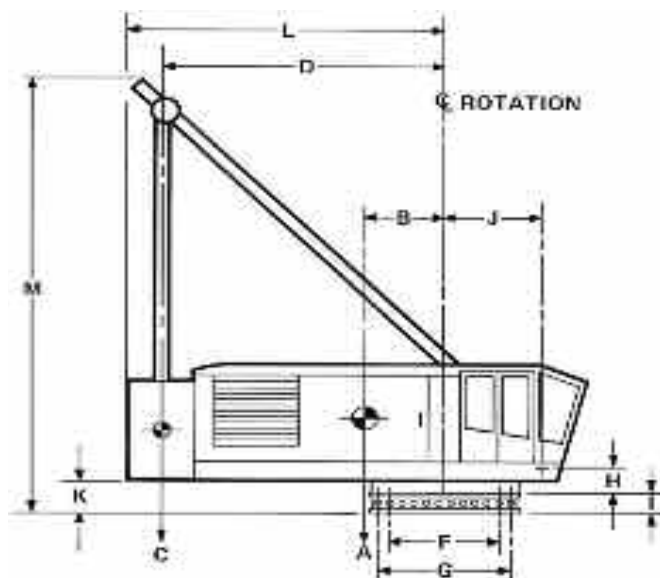


Located in SCOTLAND

Contact: Tim Fox or Bob Brooks

300 Ton, 94" Boom

CAT Powered



GENERAL DIMENSIONS & FORCES

A.	Weight of upper deck.....	140,972 Lb
B.	☉ Rotation to C.G. of upper deck	4.418 Ft
C.	Weight of counterweight	110,800 Lb
D.	☉ Rotation to C.G. of counterweight ..	16.92 Ft
E.	Maximum allowable net overturning moment based on swing bearing	9,500,000 Ft Lb
F.	Pitch diameter of bullgear (1.25 D.P.)	100.00 In
G.	Lower mounting bolt circle diameter	105.00 In
H.	Height of boom foot from bottom turntable bearing	1.86 Ft
I.	Bottom of turntable bearing to bottom of adaptor	1.5 Ft
J.	☉ Rotation to boom foot	5.833 Ft
K.	Clearance bottom of adaptor to bottom of counterweight	2.63 Ft
L.	Tailswing	19 Ft
M.	Height over raised A-frame from bottom of adaptor	36.1 Ft
N.	Swing torque	430,000 Ft Lb

www.fmmafco.com

Toll-Free: **1.800.333.2151**

CINCINNATI, OH • BIRMINGHAM, AL • CARSON CITY, NV • CHARLOTTE, NC • EDMONTON, AB CANADA • HOUMA, LA • KANSAS CITY, MO • UNITED KINGDOM

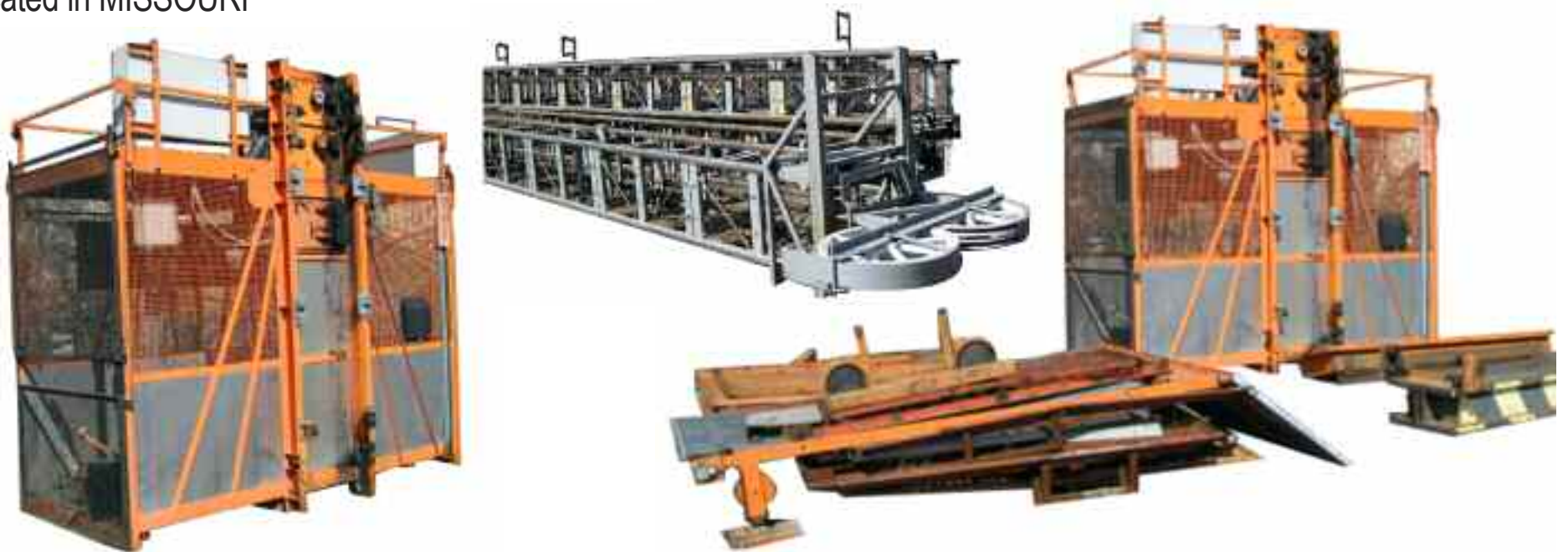
Hek Elevator

Equiped with 220' of Tower
Located in MISSOURI



Alimak Elevator

Equiped with 160' of Tower
Located in MISSOURI



American 900 & 1100 Series Hydraulic Pumps & Hydraulic Motors

Located in OHIO



www.fmmafco.com

World-Wide: 1.513.367.2151

CINCINNATI, OH • BIRMINGHAM, AL • CARSON CITY, NV • CHARLOTTE, NC • EDMONTON, AB CANADA • HOUMA, LA • KANSAS CITY, MO • UNITED KINGDOM

Contact: Bob Brooks or Bill McKenna

Manitowoc 4100 SI s/n 41662

Located in UK

Call for Pricing
& Availability!

P.O.R.



1982 Liebherr BOS 40/130 s/n 126427

40 Ton Pedestal Crane, 62'
Radius, 150' Boom
Located in UK

Call for Pricing
& Availability!

P.O.R.



Clyde Model 37 s/n CW-3938

Gantry Mounted Revolver Crane with
New Controls
Located in MARYLAND

Call for Pricing
& Availability!

P.O.R.



Manitowoc 4100 s/n 41263

Located in OHIO



Call for Pricing
& Availability!

P.O.R.

9310 Skyhorse s/n 9110&RM 18390

March 2013
Located in LOUISIANA



Call for Pricing
& Availability!

P.O.R.

www.fmmafco.com

Toll-Free: 1.800.333.2151

CINCINNATI, OH • BIRMINGHAM, AL • CARSON CITY, NV • CHARLOTTE, NC • EDMONTON, AB CANADA • HOUMA, LA • KANSAS CITY, MO • UNITED KINGDOM

CRANES FOR SALE OR RENT



Contact: Bob Brooks or Bill McKenna

1995 Manitowoc 4100 S3 s/n 41909

300 Ton, Ringer on Barge
Located in LOUISIANA
"BIG MAC"

Call for Pricing
& Availability!

P.O.R.



1971 Manitowoc 4100SII s/n 41086

230 Ton Capacity, Crawler Crane
Located in OHIO

Call for Pricing
& Availability!

P.O.R.



1976 Manitowoc 4100SII s/n 41429

230 Ton Capacity,
200' of #22 Boom
and 40' of Jib
Located in OHIO

Call for Pricing
& Availability!

P.O.R.



Manitowoc 4000W s/n 40282

190' of #17 Boom
Plus Jib
Located in JOHANNESBURG, SOUTH AFRICA

Call for Pricing
& Availability!

P.O.R.



1980 American 11320 s/n 8007-A0-2330F

450 Ton Crawler Crane with Skyhorse,
Rebuilt \$400,000 in repairs
Located in OHIO

Call for Pricing
& Availability!

P.O.R.



www.fmmafco.com

World-Wide: 1.513.367.2151

CINCINNATI, OH • BIRMINGHAM, AL • CARSON CITY, NV • CHARLOTTE, NC • EDMONTON, AB CANADA • HOUMA, LA • KANSAS CITY, MO • UNITED KINGDOM

Contact: Bob Brooks or Bill McKenna

1976 Link-Belt LS-518 s/n 4EW622

Located in OHIO



Call for Pricing & Availability!

P.O.R.

1982 Link-Belt LS-418A s/n 4EV869

110 Ton Crawler Crane with 110' Main Boom, Clamshell
Located in OHIO



Call for Pricing & Availability!

P.O.R.

1968 Manitowoc 4000W s/n 40220

Located in OHIO
Rebuilt lower and side frames



Call for Pricing & Availability!

P.O.R.

1991 American 9299 s/n 9102RM11362

165 Ton Crawler Crane
Located in OHIO



Call for Pricing & Availability!

P.O.R.

1982 Link-Belt API-238 s/n 22TH2-1271C

114 Ton Capacity, 100' Boom and Jib, all Aluminum Cabs
Located in OHIO
2 Available



Call for Pricing & Availability!

P.O.R.

American 4750

Pedestal Crane
Located in UK



Call for Pricing & Availability!

P.O.R.

www.fmmafco.com

Toll-Free: 1.800.333.2151

CINCINNATI, OH • BIRMINGHAM, AL • CARSON CITY, NV • CHARLOTTE, NC • EDMONTON, AB CANADA • HOUMA, LA • KANSAS CITY, MO • UNITED KINGDOM

CRANES FOR SALE OR RENT



Contact: Bob Brooks or Bill McKenna

1974 American 11750

300 Ton Pedestal Crane, Total Rebuild Located in UK

Call for Pricing & Availability!

P.O.R.



1989 Manitowoc 3900 s/n 391320

100 Ton Capacity, Crawler Crane, Clamshell machine, Diesel Located in OHIO

Call for Pricing & Availability!

P.O.R.



1971 Manitowoc SC-135 s/n 395092

Split with 3900 Clamshell 391224 Located in OHIO

Call for Pricing & Availability!

P.O.R.



Knight Aerospace

Aircraft Engine Crane Located in OHIO

Call for Pricing & Availability!

P.O.R.



1975 Manitowoc 3900T SII s/n 399016

155 Ton Capacity, 140' Boom Located in Ohio

Call for Pricing & Availability!

P.O.R.



1981 American 5680 s/n 8101-A0-2479

Wagon Crane, 75 Ton Capacity, 100' Tubular Boom Located in OHIO

Call for Pricing & Availability!

P.O.R.



www.fmmafco.com

World-Wide: 1.513.367.2151

CINCINNATI, OH • BIRMINGHAM, AL • CARSON CITY, NV • CHARLOTTE, NC • EDMONTON, AB CANADA • HOUMA, LA • KANSAS CITY, MO • UNITED KINGDOM

Contact: Bob Brooks or Bill McKenna

Manitowoc 4100 with ringer

Located in TENNESSEE



JUST PURCHASED
April 2013

Sheaves

Thousands of Sheaves from 6" to 7" in diameter and 1/2" to 3" groove size.



Call for Pricing & Availability!

P.O.R.

1998 Grove RT-865B s/n 86364

125' Boom, 60' Jib
Located in OHIO



Special Price!!

\$265,000

Link-Belt HC-138 s/n 19G0115

Parting out
65 Ton
Located in TEXAS



Call for Pricing & Availability!

P.O.R.

Clyde Model 28 s/n CW-3800

Gantry Mounted Revolver Crane with New Controls
Located in MARYLAND



Call for Pricing & Availability!

P.O.R.

PARTS FOR SALE

3900 Clamshell S/n 391244

Manufactured by ERIE,
Rated 2 1/2 yd³,
Approximate weight = 7,800 lb,
130 lb / ft³.



GOOD CONDITION!

Twin Disc Torque Converters

Located in OHIO



www.fmmafco.com

Toll-Free: **1.800.333.2151**

CINCINNATI, OH • BIRMINGHAM, AL • CARSON CITY, NV • CHARLOTTE, NC • EDMONTON, AB CANADA • HOUMA, LA • KANSAS CITY, MO • UNITED KINGDOM

PARTS FOR SALE



Ask for "Crane Parts"

American 11250

Skyhorse
Located in OHIO



Call for Pricing
& Availability!

P.O.R.

American 11320

Tower, Skyhorse,
Guy Derrick Attachment
Located in OHIO



Call for Pricing
& Availability!

P.O.R.

American 900

Tower, Skyhorse,
Guy Derrick Attachment
Located in OHIO



Call for Pricing
& Availability!

P.O.R.

Manitowoc 4100 SIII Ringer Components

Located in OHIO
and
SOUTH AFRICA



Call for Pricing
& Availability!

P.O.R.

Manitowoc 3900T

Tower Attachment (OHIO)



Call for Pricing
& Availability!

P.O.R.

www.fmmafco.com

World-Wide: 1.513.367.2151

CINCINNATI, OH • BIRMINGHAM, AL • CARSON CITY, NV • CHARLOTTE, NC • EDMONTON, AB CANADA • HOUMA, LA • KANSAS CITY, MO • UNITED KINGDOM

Ask for "Crane Parts"

American #77SA Boom Butt Section

(HC-275)
Located
in OHIO



P.O.R.

"Parting Out" American

Model 9310
Located
in OHIO



P.O.R.

Manitowoc 4600

Tower
Attachment
Located in
TEXAS



P.O.R.

Manitowoc 4600 SIV Ringer

Various
Components
Located
in OHIO



P.O.R.

Manitowoc #78 Boom Butt Section

(777)
Located
in OHIO



P.O.R.

Manitowoc #22 Auxiliary Boom Point

Special
Application
Located
in OHIO



P.O.R.

Manitowoc #22 Hammerhead Boom Tip

Located
in OHIO



P.O.R.

Manitowoc Hook Block

100 Ton
Located
in OHIO



P.O.R.

Manitowoc 4000 Pedestal Crane Base

Located
in OHIO



P.O.R.

Manitowoc 4100

Tower
Attachment
Located in
OHIO



P.O.R.

"Parting Out" P&H

Model 670 TC
Located in OHIO



P.O.R.

"Parting Out" P&H

Model 790-BTC, Located in OHIO



P.O.R.

Misc. Tower Sections

Located in
OHIO



P.O.R.

Misc. Rudomatic Tagline Winders

Located in
OHIO



P.O.R.

Misc. Fairleads

Located in
OHIO



P.O.R.

PARTS FOR SALE



Ask for "Crane Parts"

American Boom Assembly

1400 Model, Located in OHIO



American Counter Weights

Model 9310, Located in OHIO



American Mast Butt

94M Model, Located in OHIO



Manitowoc 4100 Hydraulic Third Drum Man-Rider

Located in OHIO



P.O.R.

Manitowoc Counter Weights

4100 Series II, Located in OHIO



P.O.R.

Manitowoc Auxiliary Boom Point

#22, Located in OHIO



P.O.R.

Cummins Diesel Engine

6-CTA, Unused Surplus: 6BT5.9 Rebuilt REBEX0187 and NTA855-360 Rebuilt REBEX0201 Located in OHIO



P.O.R.

CAT D-348 Diesel Engine

Located in OHIO



P.O.R.

Hard To Find Dana Transmission

Fits older P&H 670 & 790 Uppers, Good, Used. MDL# 6531 BOM# 300186 Located in OHIO



Special Price!!

\$4,000

Clyde Revolver Boom

Model 52 Located in HOUSTON



P.O.R.

Link-Belt Counter Weights

Model LS-518 "B", Located in OHIO



P.O.R.

Crane Fairleads American, Manitowoc & Link-Belt

Located in OHIO



P.O.R.

Hard To Find Laggings

AMERICAN

1039288	137509	41238	67263	704673	707062	716679
1059500	1404711	419361	700714	704674	707144	718553
1064026	201430	429393	700715	704675	709406	718554
1082960	212553	604104	700756	704676	711570	802032
1083333	239153	67260	701617	704677	711571	D8437
1083349	31657A	67261	701772	705855	712232	D8714
1083350	410835	67262	704118	706160	712399	D8715
				706869	713905	F9818

MANITOWOC

180078	20142	31082	31612	32966
180286	20152	31083	31663	32967
181248	22115	31355	31878	41660
181614	22531	31374	32283	48816
182543	23046	31375	32288	48935
			32655	502336

KOEHRING

234E223

Located in OHIO

www.fmmafco.com

World-Wide: **1.513.367.2151**

CINCINNATI, OH • BIRMINGHAM, AL • CARSON CITY, NV • CHARLOTTE, NC • EDMONTON, AB CANADA • HOUMA, LA • KANSAS CITY, MO • UNITED KINGDOM

Contact: Scott Griffith sgriffith@fmmafco.com

Used Revolver Crane Parts & Component Inventory

The following partial list of equipment is available for sale from our inventory. Prices do not include freight or any applicable taxes. Location of the equipment will vary, however most is located in Louisiana or Houston. As our inventory changes from day to day, please contact your sales rep for up to date inventory. All equipment is subject to prior sale.



Qty	Revolver Components	Model	Qty	Revolver Components	Model
1 set	Bull Gear Sets - Rotating Body - 8 segments: 11 H 72	CLYDE 20	1	DERRICK 90 Ton - 90' Boom - As-Is or Rebuilt	AM 2036
2 sets	Bull Gear Sets - Rotating Body - 8 segments: 11 H 54	CLYDE 24	3	90B 2 or 3-Drum Hoist, Electric or Diesel, Manual - Rebuilt!	AMERICAN
3 sets	Bull Gear Sets - Rotating Body - 8 segments: 11 H 42 or 11 H 78	CLYDE 28	4	120B 3-Drum Hoist with Diesel, Manual Controls	AMERICAN
1 set	House Equalizer - Wheels with Axles	CLYDE 24 & 32	1	16 V 71 Engine with Transmission and T. Converter	GMC
2 sets	Equalizer & Wheel Assembly - Complete: 920 J Ton 5	CLYDE 20	1	1710	CUMMINS
3 sets	Equalizer & Wheel Assembly - Complete: 86 H 10	CLYDE 24	1	KTA 19	CUMMINS
2 sets	Equalizer & Wheel Assembly - Complete: 86 L 5, 86 L 3, 86 H 7	CLYDE 28	1	D-348 Engine with Twin Disc and T. Converter	CAT
4	Travel Trucks - 171# Rail, 4 - 36" Wheel, Hyd., 40HP	AM 1400	1	3408 Engine with Twin Disc Transmission	CAT
4	Travel Trucks - 171# Rail, 6 Wheel, 25HP	AM 305	Qty	Gears, Flanges & Pinions or Shafts	Model
2 sets	Travel Trucks - 171# Rail, 4 Wheel, 20HP	CLYDE 28	12	ReRimmed 11 L 23 Fr4, 11 L 12 Fr5, ReRimmed 11 L 15 Fr 6, ReRimmed 11 L 17 Fr7, Used 11 L 19 Fr8, Used 11 L 29 Fr14, New 11 L 48 Fr 20 Clutched, New 11 L 81 Fr20 Fixed, New Frame 10 11 Ton 316, New 14 Ton 57 Model 76 Swing Gear	CLYDE Frame 4, 5, 6, 7, 8, 14, 20
4	Travel Trucks - 171# Rail, 4 Wheel, 20HP	AM 3525	15	70B, 90B, 120B, 180, 250A, 350, 480, 550 Drum Gears	AMERICAN
4	Travel Trucks - 171# Rail, 4 Wheel, 15HP	AM 254	8	Drum Shaft AM 350, 480, 550	AMERICAN
2	3 Drum Hoist - Frame 9-9-9 Waterfall	CLYDE 24 & 28	4	Intermediate SHAFTS - 350	AMERICAN
1	Fr 8 Boom Hoist & Fr 9 Boom Hoist	CLYDE 28	1	Intermediate SHAFT - 550	AMERICAN
1	3 Drum Hoist - Model 180 - Air/Man - Flat Bed	AM R-20	1	Intermediate SHAFT - 480	AMERICAN
1	3 Drum - Model 250 Flat Bed	AM R-30, 305	1	Drum SHAFT - Clyde Frame 8, 62 H 143	CLYDE
3	Swinger with Motor & Brake	CLYDE 28 & 32	2	Drum SHAFT - Clyde Frame 8, 62 H 29	CLYDE
2	Swinger with Motor & Brake	CLYDE 24	1	Drum SHAFT - Clyde Frame 6, 62 H 9	CLYDE
1	NEW Swinger with Motor - updated Model 52	CLYDE 52 & 60	1	Drum SHAFT - Clyde Frame 6, 62 H 8	CLYDE
4	Complete Swingers with Motors	CLYDE 76	1	Drum SHAFT - Clyde Frame 8, 62 H 42	CLYDE
1	Swinger with Motor & Brake - Model 760	AM R-25	1	Fleet SHAFT - AD-175 with Sheave	CLYDE
2	A-Frame - 65 Ton - Built in Sheaves	CLYDE 24	1	Intermediate SHAFT - 62 Ton 382	CLYDE
2	A-Frame / Backleg Set	AM R-20	58	Truck Wheels & Spur / Bevel Pinions for most Models	CLYDE and AH&D
50	FLEETING SHEAVES: Clyde, American, Colby, Washington, Diameter, Call for Availability (with Part No.)	AM 24, R-15, R-20, CLYDE 24, 28, 37 & 52	2	Chain Wheel 97 H 129, 44" x 12", 90 T, 6 row	CLYDE
1	Complete Gantry CRANE A.C. or D.C. 45 Ton - s/n 421	AM R-15	1	Chain Wheel 97 H Ton 382, 44" x 12", 90 T, 6 row	CLYDE
1	Complete Gantry CRANE D.C. 90 Ton - s/n R1160F - 180' Boom, DUTY CYCLE , Located in Amarillo, TX	AM 3525	1	Chain Wheel 97 H 131, 58" x 15", 90 T, 6 row	CLYDE
1	RUNNING 37" GANTRY CRANE , DC Controls (1993), Boom 130' + 20', Frame 12-8, Ind. Boom H, s/n CW 3938	CLYDE	1	Chain Wheel 97 H 58, 58" x 15", 90 T, 6 row	CLYDE
1	RUNNING 28" GANTRY CRANE , AC Controls (1995), Boom 130' + 20', Frame 8-8, Ind. Boom H, s/n CW 3800	CLYDE	1	Chain Wheel 97 H 130, 58" x 15", 120 T, 6 row	CLYDE
1	Model 24' GANTRY CRANE for Barge or Dock Mounting, Boom 120' + 15', 30HP swing, Ind. Boom Hoist, Fr 14-14	CLYDE	1	Swinger Shaft, 25612 M, Keyed	CLYDE 42
1	LARGE SUPPLY SKAGIT MD-97 SPARE PARTS - NEW!!	SKAGIT	1	Swinger Shaft, 62 Ton 171	CLYDE 37, Model 52
150	Wheels for Marine Rail Systems or Gantry Trucks - up to 36" Diameter	ALL BRANDS	1	Swinger Shaft, 62 Ton 263	CLYDE 52
13	52" Deck Sheaves for 2" + Wire - Great Price!! Good Condition!!	Sberger	1	Swinger Shaft, 62 Ton 344	CLYDE 52
	Brake Bands - All sizes for Clyde and American Hoists	AM / CLYDE	1	Swinger Shaft, 62 H 269	
	Clutch Bands - Various Sizes - for most Revolving Cranes	ALL REV. CRANES	1	Swing Bull Pinion 11 Ton 525	
1	60 HP, VERTICAL SWING MOTOR, 1800 RPM	G.E.	1	Swing 75 Ton GEAR 11 Ton 526	
1	125 HP, VERTICAL SWING MOTOR, 1150 / 2000 RPM	RELIANCE		Parting out Fr7, 8, 10, 14 & 20 Hoist, as required	CLYDE
4	150 HP, DC VERTICAL SWING MOTORS with Wichita Brakes	WEST	1	Boom - 250 - 300 Ton - 16' Hinge, 4 Sections, 220'	Dravo
14	HAGGLUND HYDRAULIC (60's series) MOTORS, with Shafts	HAGGLUNDS	1	Boom - 400 Ton - 10' - 9" Hinge, 5 Sections, 130' Boom - Painted!!	AM S-60 DERRICK
4	HAGGLUND HYDRAULIC (80 series) MOTORS, with Shafts	HAGGLUNDS	1	Boom - NEW	CLYDE 76
15	Brake Drums - Travel Swing and Hoist Brakes, 6 - 30" Diameter	ALL BRANDS		Frame 20-14, Fr 20 Boom Hoist, Skagit AED 295, 2 Drum	CLYDE & SKAGIT
2	Twin Disc - Orange Converters, for Power Lowering	AMCON or SKAGIT		AM 650 - 2 Drum, American 750 - 2 Drum, Driven by 16 v 71	AMERICAN
2	Gear Boxes - 250 HP, 43 to 1 Ratio - Parallel Shaft	FOOTE BROS.		Operators Cabs To Suit:	
4	Gear Boxes - 55 HP, Input 1100, Output 30 RPM, 38.5 Ratio - Parallel Shaft	FAULK		SHERICAL Boom HINGE BUSHINGS for any Revolver Crane	
2	Gear Boxes - 250 HP, Input 900, Output 1650 RPM, 1.826 Ratio - Parallel Shaft	FAULK		DERRICKS - AVAILABLE FOR RENT AND SALE!	
1	Twin Disc - 2,800 Series Transmission - 2:1	Twin Disc		PEDESTAL CRANES - AVAILABLE FOR RENT AND SALE!	
1	Twin Disc - 11,500 Converter, Clutch, Housing, Shaft	Twin Disc		PNEUMATIC TIRE LIFT TRUCKS - AVAILABLE FOR RENT!	
2	Twin Disc - OMEGA Converters	Twin Disc		20 TON HEAVY TRAILERS - AVAILABLE FOR RENT OR SALE!	
1	Manitowoc Jib #122 for #7 and #35	MANITOWOC	65		
4	Upper & Lower Load Blocks with Duplex or Quad Hooks	AM&D and CLYDE	15		24, 28, 32, 37, 52
2	Generator (Con. Duty) 2 Brg - 200 KW - VDC 440	Generic	24		
3,000	Sheaves - 3/4" to 2 3/8" WR for all Whirley or Revolver Cranes, thousands for general use, order to Suit.	All Brands			

Ask for "Crane Parts"

Turnbuckles - 1000's to Choose From!



Call for Pricing
& Availability!

P.O.R.

Misc. Used Heavy Chokers



Call for Pricing
& Availability!

P.O.R.

Cable & Lashing

Thousands of feet
of used cable and
lashing. All
diameters.



Call for Pricing
& Availability!

P.O.R.

Heavy-Duty Casters

1" to 4"



Call for Pricing
& Availability!

P.O.R.

Girder Clamps and Beam Clamps



Call for Pricing
& Availability!

P.O.R.

McKissick Duplex Swivel Hook Assemblies

Surplus!



Call for Pricing
& Availability!

P.O.R.

Canron Overhead Trucks



Call for Pricing
& Availability!

P.O.R.

Timberland Dismantling Crane



Call for Pricing
& Availability!

P.O.R.

Various Hook Blocks



Call for Pricing
& Availability!

P.O.R.

Several Overhead Cranes



Call for Pricing
& Availability!

P.O.R.

Bridge Strand Pendants

1 3/4" - NEW!!



Call for Pricing
& Availability!

P.O.R.

Various Spreader Bars



Call for Pricing
& Availability!

P.O.R.

Steamboat Ratchets



Call for Pricing
& Availability!

P.O.R.

Kobelco/Manitowoc Boom & Jib

Kobelco: CK850 &
CK1000
Manitowoc: 8000,
8500, 10000



Call for Pricing
& Availability!

P.O.R.

Hose Reel & Jack Control Station

Hydraulic
Powered



Call for Pricing
& Availability!

P.O.R.

Ask for "Crane Parts"

All Sizes of Wedge Sockets



Call for Pricing & Availability!

P.O.R.

American Compressor Poles

Pin Connected
(Excellent for Falsework)



Call for Pricing & Availability!

P.O.R.

Fabricated 63' Tower Section

(W36 x 300's)



Call for Pricing & Availability!

P.O.R.

Various Capstans



Call for Pricing & Availability!

P.O.R.

Tandem Railroad Trucks



Call for Pricing & Availability!

P.O.R.

Misc. Railroad Rails



Call for Pricing & Availability!

P.O.R.

Crosby Cable Clips

1/4 to 2 1/2
Surplus,
Used and Unused



Call for Pricing & Availability!

P.O.R.

Concrete Deadman Anchors



Call for Pricing & Availability!

P.O.R.

Various Assortment of Heavy Steel Plates



Call for Pricing & Availability!

P.O.R.

Crosby and Others Rigging Hardware

Surplus,
Used and Unused



Call for Pricing & Availability!

P.O.R.

100's of Steel Beams

to 426 lb / ft



Call for Pricing & Availability!

P.O.R.

Tubular Leg Sections

42" x 36" Diameter
(4-Pieces)



Call for Pricing & Availability!

P.O.R.

220 Ton Spreader Bars

PND Manufacturing, 16' Long, 42" Diameter

Special Price!!

\$12,000

PND Manufacturing, 42' Long, 42" Diameter

Special Price!!

\$18,000



P&H Hydraulic Winch



Call for Pricing & Availability!

P.O.R.

Ask for "Crane Parts"

Jobsite Fuel Tanks



Call for
Availability!

FOR RENT!

Electric / Hydraulic Power Unit

Located in
Harrison, OH



Call for Pricing
& Availability!

P.O.R.

Lakeside Electric Hoist



Call for Pricing
& Availability!

P.O.R.

Mobile Lube Cart

275 gallon gas tank, 275 gallon diesel tank, air compressor, 8, hose reels. All mounted on trailer. Sold as-is or built to suit.



Call for Pricing
& Availability!

P.O.R.

Chicago 48" Blower Fans

54,000 CFM, used, Model 4900-B12-1760, with Toshiba 50hp motor, Cont. Duty



Call for Pricing
& Availability!

P.O.R.

Lidgerwood Electric Hoist



Call for Pricing
& Availability!

P.O.R.

Fifth Wheel Dollies



Call for
Availability!

FOR RENT!

"Tons" of Ballasts

(Counterweight)



Call for Pricing
& Availability!

P.O.R.

Coffing 40 Ton Chain Hoist

Model LHH40B10-20
10' Lift
2 Available



Special Price!!

\$5,000

Nabrico Model 40 Hand Winch



Call for Pricing
& Availability!

P.O.R.

Braden Air Tugger **NEW!**

5,000 lb Capacity



Call for Pricing
& Availability!

P.O.R.

Hydraulic Winch

with Detroit Diesel Power Unit



Call for Pricing
& Availability!

P.O.R.

Beebe Bros. Hand Winches



Call for Pricing
& Availability!

P.O.R.

Hydraulic Winches & Barge Winches



Call for Pricing
& Availability!

P.O.R.

Ingersoll Rand "Slusher" Hoist

Air-Powered, K5 motor



Call for Pricing
& Availability!

P.O.R.

Ask for "Crane Parts"

American 900 Series Components

New - Used - Aftermarket

Located in OHIO

REBEX®



11 Roller 9260 Sideframes



Drive Tumbler BEFORE



3rd Drum CLL



15 Roller 9310 Sideframes



Drive Tumbler AFTER



Large 3rd Drum

American 1100 Series 4th Drum

Located in OHIO



REBEX® "Because Time is Money!"



American 900 Series Independent Swing Clutch Assembly

Our REBEX® Program is designed to save you money and needless downtime. We have complete components available for your machine, sideframes, swingers, roller paths, converters, engines and more.



Manitowoc 4100 Boom Hoist Box



American 900 Large Swinger

Once the REBEX® component is installed, send us your core, and be a hero for keeping downtime to an absolute minimum!



American and Manitowoc REBEX® rollers

Call us for details!

www.fmmafco.com

Toll-Free: **1.800.333.2151**

CINCINNATI, OH • BIRMINGHAM, AL • CARSON CITY, NV • CHARLOTTE, NC • EDMONTON, AB CANADA • HOUMA, LA • KANSAS CITY, MO • UNITED KINGDOM

REBEX Parts & Equipment

REBEX = REBUILT EXCHANGE

Manuf.	Model	Description
Manitowoc	3900	#8 Complete Boom
	3900-4000-4100	48" Track Pads
	3900-4000-4100	Complete Vicon Case with Sprockets, Chain, Converters
	3900-4000-4100	Drive Tumblers
	3900-4000-4100	Drum Shaft Assembly
	3900-4000-4100	Idlers
	3900-4000-4100	Lower Rollers
	3900-4000-4100	Lube Pump
	3900-4000-4100	Roller Path
	3900-4000-4100	Vicon Converters
	3900-4100	Roller Path
	3900-4100	Rotating Machinery Deck
	3900-4100	Sideframes
	3900-4100	Vicon Converters
	3900W	#9A Boom Tip & Inserts
	4000-4100	Gantry
	4000-4100	#123 Jib Assembly
	4000-4100	#22 Complete Boom
	4100	Boom Hoist Gearbox
	4100	Complete CLL Assembly
	4100	Cummins NTA855C380
	4100	Equalizer
	4100	Hydraulic Motor for Boom Hoist
	4100	Hydraulic Pump for Boom Hoist
	4100	Main Drive Shaft Assembly
	4100	Tower Attachment - ALL OFFERS CONSIDERED !!
	4600	Tower Attachment - ALL OFFERS CONSIDERED !!
	4600	60" Track Shoes, REBEX
	4600	#122 Jib Assembly
	4600	(1) - #38 Ringer Booms
	4600 S4/5	Gantry
	4600 S4/5	NEW - p/n 49672 Gantry
	\$685.00	Example - Vicon Shaft p/n 24444
American	500-700-900-1100	Tumblers and Idlers
	900 Series	44" and 50" Track Pads
	900 Series	CLL and Auxillary Shaft for 1 or 2 Drums
	900 Series	CLL Assembly for 3rd Drum
	900 Series	Cummins NTA360CBCI Big Cam Engine
	900 Series	Drive Tumbler Assembly
	900 Series	Idler Tumbler Assembly
	900 Series	Independent Swing Assembly
	900 Series	Lower Rollers
	900 Series	Main Hoist Brake Bands
	900 Series	Main Hoist Clutch Bands
	900 Series	Small and Large 3 rd Drums
	900 Series	Swing Gearbox
	900 Series	Swing Trans
	900-1100	30H Complete Jib
	900-1100	75H Complete Jib
	998-9260-9299-9310	Sideframes
	999/9260	Sideframes, 11 Roller
	9299	Sideframes, 12 Roller
	9310	Sideframes, 15 Roller
	1100 Series	60" Track Pads
	1100 Series	Hydraulic 4 th Drum Assembly
	1100 Series	Vickers Swing Pumps and Motors
	1100 Series	Vickers Swing System (Pumps and Motors)

Manuf.	Model	Description
American	11320	Turntable Bearing
	All Series	Machinery Deck, Carbody's, 1000's of new, used and rebuilt parts
	All Series	Brake Chambers, Roto Chambers, Flex Air Valves
	All Series	3 Stage Twin Disc Torque Converter, various torque
	Call for Details	180' 118LJ Boom 300 Ton + Capacity, Ideal for Shearleg
	Call for Pricing	Complete 46S, 47H, 58H, 59S, 77S, 92H & 94H Booms Avail.
Link-Belt	LS318-338-418-518	44" Track Pads, Light
	LS338 & LS518	REBEX® Link-Belt Sideframes
	LS338	Sideframes
	LS518	Sideframes
	LS518	Traction Shaft Housing
		Damaged Boom - Sold by the Foot for Walkway Use
Rigging and other Components		Clyde and Skagit Parts & Components
		Detroit 12 Volt 149 Engines
		Drive Chain for all makes and models
		Various Hydraulic Powered Rail Bogeys
		Various Shackles to 600 Ton Capacity
		1000's of Sheaves too 100" o.d. and Grooved for up to 3" Rope



"NEW" Crawler Drive Chains in Stock !!



4000 Roller Path



Turntable Bearing

American Model 11750 Turntable Bearing

Ask for "Crane Parts"

Misc. Equipment for Rent or Sale!



MIMIMUM WEAR!

Rock Grapple Model RA-78, 12 Ton Capacity



Renfroe Beam Clamps

100 Ton Girder Max. WLL
12" to 36" Flange Width
2 1/8" to 7" Flange Thickness
s/n RIB106331 &
s/n RIB106332

Located in OHIO



Over Haul Balls



Appleton 2 1/4" Heavy-Duty Deck Fairleads



McKissick 600 Ton Swivel Hook Block



NEW McKissick 1,000 Ton Duplex Hook / Swivel Assembly



Timberland 1 1/2" Heavy Duty Rigging Block



Thousands of Rigging Blocks, Snatch Blocks and Hook Blocks



Miscellaneous Hook Blocks



Manitowoc 400 Ton Hook Block



Crosby 1000 Ton "Wide Body" Shackle - Unused



Crosby 700 Ton "Wide Body" Shackle



Renfroe 100 Ton Plate Clamp, Model S-100

www.fmmafco.com

Toll-Free: 1.800.333.2151

CINCINNATI, OH • BIRMINGHAM, AL • CARSON CITY, NV • CHARLOTTE, NC • EDMONTON, AB CANADA • HOUMA, LA • KANSAS CITY, MO • UNITED KINGDOM

Contact: Tim Kittle or Bob McKenna

For Rent or Sale

P.O.R. (Price on Request)

P.T.S. (Priced to Sell)

HOISTS



Clyde AD-150 Hoist



Clyde Frame 4 Hoist



Clyde Frame 5 Hoist



Clyde Frame 6 Double-Drum Hoist



Clyde Frame 8 Hoist



American Model 385 Hoist

1	Skagit AED295 Hoist - 550,000 SLP, 2 Drum Waterfall, 855 Cummins with Omega, spools 5,500' of 2½" Rope, located in LA	P.O.R.
1	Skagit DTW-150 Hoist - 300,000 SLP, Single Drum, Diesel, spools 3,100' of 2¼" Rope, Located in OH	P.O.R.
1	Skagit Model BU 30 Hoist - 50,000 SLP, Single Drum, 50 H Electric Motor, Constant Tension Hydraulic Drive, 5' x 7' Skid	P.O.R.
2	Skagit Model BU 80 C Hoists - 40,000 SLP, Double Drum, High Speed, Cummins Engines, T.D. Transmission and Torque C. Air / Manual controls in enclosed Operator Cab, 1,500' of 1½" Rope, Located in LA	P.O.R.
1	Skagit Model G-160 Hoist - 165,000 SLP, Single Drum, Diesel, spools 1,950' of 1¾" Rope, Will sell "as-is," Located in OH	P.O.R.
1	Skagit Model BU 100 Hoist - 48,000 SLP, Double Drum, No Power, Manual Control, 1,300' of 1" Rope, Located in LA	P.O.R.
2	Superior Lidgerwood Hoists - 20,000 SLP, 250 HP High Speed or powered as you wish, 1,500' of ¾" Rope, Located in OH	P.T.S.
4	American Model 90B Hoists - 9,000 SLP, 2, 3 or 4 Drum, Manual Controls, spools 2,800' of ½" Rope, Located in LA & OH	P.T.S.
5	American Model 120B Hoists - 12,000 SLP, 2 or 3 Drum, Manual Controls, spools 1,900' of ¾" Rope, Located in LA & OH	P.T.S.
2	American Model 250 Hoists - 35,000 SLP, 3 Drum Flatbed, Electric Motor or GMC 8V71 Diesel, spools 2,800' of 1½" Rope, Located in LA	P.O.R.
1	American Model 250A Hoist - 35,000 SLP, 2 Drum Flatbed, Electric or Diesel, spools 2,800' of 1½" Rope, Located in OH	P.T.S.
1	American Model 250A Boom Hoist - 25,000 SLP, 1 Drum, Driven by Electric Motor, spools 1,800' of 1½" Rope, Located in OH	P.O.R.
2	American Model 240B Hoists - 24 to 50,000 SLP, 1 or 2 Drum Waterfall, 200 HP Elec. or Diesel, spools 1,900' of 1½" Rope, Located in LA	P.O.R.
1	Amcon Model 385 Hoist - 150,000 SLP, 3 Drum Waterfall, 4-71 GM Diesel, spools 1½" Rope, ON RENT, Located in LA	P.O.R.
1	Amcon Model 385 Hoist - 150,000 SLP, 2 Drum Waterfall, 4-71 GM Diesel, spools 1½" Rope, ON RENT, Located in LA	P.O.R.
1	American Model 350 Hoist - 100,000 SLP, 2 Drum Flat Bed, GM Diesel, spools 5,000' of 1½" Rope, ON RENT, Located in OH	P.O.R.
1	American Model 350 Hoist - 105,000 SLP, 3 Drum Waterfall, GM Diesel, spools 5,000' of 1½" Rope	P.O.R.
2	American Model 550 Hoists - 170,000 SLP, 2 Drum Waterfall, 8V-71 GM Diesel, spools 4,000' of 1¾" Rope, Located in LA	P.O.R.
1	American 750 Hoist - 338,000 SLP, GM Diesel, Twin Disc TAC 33-1310, spools 4,000' of 2" Rope, 2 Drum, Located in LA	P.O.R.
1	American Model 1400 Hoist - 30,000 Single Line Pull, 1 Drum Electric Motor, spools 5,000' of 1¼" Rope, Located in OH	P.T.S.
1	American Block Hydraulic Hoist - 50,000 SLP, driven by 60 HPU, Single Drum, spools 3,000' of 1½" Rope, Located in LA	P.T.S.
1	HBL Hydraulic Winch - 50,000 SLP, Single Drum, Located in Houma, LA	P.T.S.
3	Hagglund Winches - 30,000 SLP on 5th Layer, 1 Drum, Hydraulic Self-Contained Skid, spools 1,200' of 1" Rope, Located in OH & LA	P.O.R.
2	Lantec Hydraulic Winches - Model 4122, 29,500 SLP, spools 1,200' of 1½" Rope, Located in OH, AVAILABLE FOR RENT OR SALE	P.O.R.
3	Manitowoc Model 390 Hoists - 130,000 SLP, 2 Drum Waterfall, 8V71 Diesel Engine, with TC, Fleet Sheaves, 4 or 6 Point Mooring System, spools 1,650' of 1½" Rope, Located in OH	P.O.R.
1	Markey Tow Winch - 150,000 SLP, Electric or Diesel, Single Drum with CAT Head, spools 3,500' of 1½" Rope, Located in LA	P.T.S.
1	Markey Tow Winch - 120,000 SLP, Electric or Diesel, Single Drum, spools 4,000' of 1¼" Rope, Located in LA	P.T.S.
1	Clyde AD-175 Hoist - 300,000 SLP, 2 Drum Waterfall, Diesel driven, spools 3,050' of 2" Rope, Located in OH	P.O.R.
2	Clyde AD-150 Hoists - 200,000 SLP, 2 Drum Waterfall, Diesel driven, spools 3,150' of 1½" Rope, REBUILT, Located in LA	P.O.R.
7	Clyde Frame 4 Hoists - 2 or 3 Drum Waterfall, Manual controls, spools 1,200' of ¾" Rope, REFURBISHED, Located in OH	P.T.S.
2	Clyde Frame 5 Hoists - 3 Drum Waterfall, Manual controls, spools 1,750' of ¾" Rope, Located in OH	P.T.S.
1	Clyde Frame 6 Hoist - Short Drum, Air Control, 3 Drum Waterfall, Electric or Diesel Drive, spools 2,000' of ¾" or 1,040' of 1" Rope, Located in LA	P.T.S.
2	Clyde Frame 6 Hoists - 2 Drum Waterfall, Manual controls, spools 1,600' of 1" Rope	P.O.R.
2	Clyde Frame 7 Hoists - 2 or 3 Drum Waterfall, GM 4-53 Diesel, spools 2,200' of 1½" Rope, Located in LA	P.O.R.
2	Clyde Frame 7 Hoists - 1 Drum, Independent Boom Hoist, Direct Drive, Electric or Air Control, Located in Houma, LA	P.T.S.
1	Clyde Frame 8 Hoist - 1 Drum, Independent Boom Hoist, Direct Drive, Electric or Air Control, Located in OH	P.T.S.
2	Clyde Frame 8 Hoists - 4 Drum Waterfall, Self-Contained 8 point Mooring, spools 2,180' of 1¼" Rope, Located in OH	P.O.R.
1	Clyde Frame 9 Hoist - 3 Drum Waterfall, Air Control, CAT 3408, spools 2,000' of 1½" Rope, Located in LA	P.O.R.
1	Clyde Frame 14 Hoist - 60,000 SLP, 1 Drum Flat, Diesel Driven, spools 2,500' of 2" Rope, Located in LA (as Fr20-14 also available)	P.O.R.
1	Clyde Frame 20 Hoist - 1 Drum Boom Hoist with CAT Diesel & Hydrotarder, spools 8,600' of 2" Rope, Located in LA	P.T.S.
1	Clyde Frame 20 Hoist - 100,000 SLP, 1 Drum Flat, 72" Long Drum, Diesel, spools 7,000' of 2" Rope, Located in LA	P.T.S.
	Clyde Clutched Drum Gears - Re-Rimmed, NEW OR USED, Frame 4, 5, 6, 7, 8, 14 & 20 IN STOCK, Bands, Pinions & Linkage also	P.O.R.
	NEW CLYDE Fr 6, Fr 7 and Fr 8 Air Control Winches available upon request with minimum of 16-18 week delivery	P.O.R.
	American Drum Gears & Shafts - 70B, 90B, 120B, 180, 250, 250A, 350A, 480, 550, 650 ... Clutch/Brake Flanges for 180, 250, 350, 480, 550	P.O.R.

RIGGING

2	McKissick 600 Ton Tandem Blocks with Duplex Hook - 1¼" Rope 6 x 27", 5 x 36" & 1 x 34" Sheaves, Located in OH	P.O.R.
1	McKissick 800 Ton Lower Load Blocks with Quad Hook - 1½" Rope 8 x 34" & 8 x 40" Sheaves, Located in OH	P.T.S.
1	McKissick 1,200 Ton Lower Load Block with Quad Hook - 1½" Rope 8 x 40", 5 x 36" & 8 x 46" Sheaves, Located in OH	P.T.S.
1	Clyde 350 Ton Quad Hook - Located in LA	P.O.R.
1	Manitowoc 400 Ton Lower Load Block with Duplex Hook - 4600, 6 or 10 Sheave, 47", Located in OH	P.O.R.
	Block of all Types - ½" to 4" Cable, NEW, USED AND SURPLUS, Located in LA, TX, AL, FL & OH	P.T.S.
	3,000+ Sheaves - 8" to 100" Diameter, Rope Sizes ½" to 3", NEW, USED OR SURPLUS, Many 24", 30" or 54", Located in LA, TX & OH	P.T.S.
	Hooks - 50 to 1200 Ton, Single, Duplex & Quad ... NEW, USED & SURPLUS, Located in LA, TX & OH	P.O.R.
	Headache Balls NEW AND GOOD USED	P.O.R.

www.fmmafco.com

World-Wide: 1.513.367.2151

CINCINNATI, OH • BIRMINGHAM, AL • CARSON CITY, NV • CHARLOTTE, NC • EDMONTON, AB CANADA • HOUMA, LA • KANSAS CITY, MO • UNITED KINGDOM

Contact: Tim Kittle or Bob McKenna

Hoists & Rigging - For Rent or Sale

Air and Hydraulic Tuggers, 4,000 SLP - 40,000 SLP, Double and Single Drum units, located in Houma, LA Yard. Pulling Block sets from 50 - 2000 Tons, located in LA and OH. Wire and Nylon Slings, Pendants and Assemblies from our own Rigging Facility.

Hoisting Engines - Electric, Diesel or Hydraulic from 5,000 to 550,000 lb SLP

Contact us for a complete list of new, used, unused and reconditioned list of equipment.

We have in our own stock: Rigging, Air Tuggers and Winches, Ridgid Tools, Greenlee Tools, Pipe Bevelers, Hydraulic Equipment, Pipe Equipment, Power and Hand Tools, Heaters, Welding, Crane Mats and more.

Crane Parts, Booms, Jibs & Components

We have the best staffed and resourced parts department in the industry. Our sales staff has a combined 150+ years experience in the crane and lifting industry worldwide and we lend that experience to every phone call. We pride ourselves in our ability to be creative, flexible and knowledgeable when you contact us. We understand your situation, and the fact that downtime is unacceptable. Because we, like you, have our cranes at job-sites day in and day out.

We have firsthand knowledge of how to solve your problems quickly and professionally and can provide alternatives ranging from new OEM items to used, REBEX or after-market parts to fit both your time and budget. Whether you need a single track pad or a complete set of REBEX side-frames, we will meet your needs and exceed your expectations. We are also cash buyers for your used or surplus items. Trade-Ins are always a possibility, and rental purchase options are available. Give us a call and let us show you how easy it can be to turn your downtime into uptime. We think you'll be pleasantly surprised to find a company that understands your problem and has the expertise to offer a powerful solution without the powerful price.

F&M MAFCO is a full line distributor for American Crane, Koehring, Lorain, Bantam, P&H, Terex, Demag, Crosby / McKissick, Gunnebo-Johnson, WireCo and Bridon Rope, Pettibone, LSI and Pyramid Parts. We also have a huge inventory of Manitowoc, Link-Belt, Clark-Lima, P&H and Grove parts and attachments. New, used, REBEX® and after-market items are available, we have over 2500 sections of boom and jib in stock and have parted out over 60 machines.



American 50-B Double-Drum Hoist



American 70-B Double-Drum Hoist



American 180 Double-Drum Hoist



American 240B Three Drum Hoist



American 250A Three Drum



American 250A Four Drum Hoist



American 280 Three Drum Hoist



American 280 Three Drum Hoist



American 380 Double-Drum Hoist



Amcon 385 Double-Drum Hoist



Dugas Winch



Skagit AED-295 2-Drum Hoist



Lantech Winch



Clyde Hoist



Clyde Frame 6 Hoist Double-Drum



Clyde Frame 8 Hoist with Swinger

www.fmmafco.com

Toll-Free: 1.800.333.2151

CINCINNATI, OH • BIRMINGHAM, AL • CARSON CITY, NV • CHARLOTTE, NC • EDMONTON, AB CANADA • HOUMA, LA • KANSAS CITY, MO • UNITED KINGDOM

HOISTS & RIGGING



Contact: Mark Griffith

Ingersoll Rand K6UL Air Tugger

10,000 lb Capacity



Special Price!!

\$16,000

Ingersoll Rand FA5A Air Tugger

10,000 lb Capacity
2008 Model
Reconditioned



Special Price!!

\$19,500

Thern Electric Winch

230 Volt 3 Phase Pendant Control
Up to 2500 lb Capacity, Model 4HP2M50H



Special Price!!

\$950

Jeamar Heavy-Duty Lifting Winches

3800 lb WLL (1st layer), 2945 lb. WLL (4th layer),
28 ft/min. line speed (1st layer), 36 ft / min line
speed (4th layer), Rope Diameter: 7/16", Rope Ca-
pacity: 300', Motor: 5 HP



Special Price!!

\$9,000

Contact: Tim Kittle or Bob McKenna

Timberland Hoist

Model HR-280-3-240, Three Drum, Diesel Powered



Call for Pricing & Availability!

Timberland Hoist

SW14 Model, Single Drum, Diesel Powered



Call for Pricing & Availability!

Manitowoc Hoist

Model 390, Diesel Powered



Call for Pricing & Availability!

Manitowoc Hoist

Model 390, Three Drum, Diesel Powered



Call for Pricing & Availability!

Timberland Winch

Model 500-1-30E



Call for Pricing & Availability!

Timberland Hoist

Double Drum
HR380



Call for Pricing & Availability!

Skagit Hoist

Model G-160



Call for Pricing & Availability!

Skagit Hoist

Model DTW-150



Call for Pricing & Availability!

Clyde Hoist

Model Frame 7, s/n 28351



Call for Pricing & Availability!

Hydraulic Winch

Model DP-60, 60,000 lb
3 Available



Call for Pricing & Availability!

Essex 7000 Hoist

7,000 lb
Electric / Hydraulic



Call for Pricing & Availability!

Skagit Drum Laggings

Model MD-97, 60", Grooved



Call for Pricing & Availability!

www.fmmafco.com

World-Wide: **1.513.367.2151**

CINCINNATI, OH • BIRMINGHAM, AL • CARSON CITY, NV • CHARLOTTE, NC • EDMONTON, AB CANADA • HOUMA, LA • KANSAS CITY, MO • UNITED KINGDOM

Contact: Mark Griffith mgriffith@fmmafco.com

1998 Broderon IC80-2E Carry Deck Crane

8.5 Ton
Cummins Diesel
Located in OHIO



Special Price!!

\$24,000

1997 Broderon IC80-3E Carry Deck Crane

8.5 Ton
Dual Fuel
Located in OHIO



Special Price!!

\$26,000

1991 Broderon IC80-2D

8.5 Ton Capacity
Dual Fuel
4400 Hours
Located in OHIO



Special Price!!

\$18,000

1989 Broderon IC200-2B

Carry Deck Crane
15 Ton
Cummins Diesel
Located in ALABAMA



Special Price!!

\$36,000

1999 JLG 601S Boom Lift

Located in OHIO
60' Reach
Diesel
2 Available



Special Price!!

\$18,000

2008 Terex Amida Light Plant

Diesel
Located in OHIO



Special Price!!

\$4,400

2007 Kubota RTV900 Utility Vehicle

Diesel
4X4
1500 Hours
Located in OHIO



Special Price!!

\$7,000

2003 New Holland LS180 Skid Steer

4700 Hours
Located in OHIO



Special Price!!

\$14,000

2003 Sky Jack SJ7127 Rough Terrain Scissor Lift

4X4
Diesel
2 Available
Located in OHIO



Special Price!!

\$15,500

LeJeune SR71E Electric Torque Wrench

Unused



Special Price!!

\$1,650

Victaulic PFT507 Pressfit tool

with Jaws in
Toolbox



Special Price!!

\$800

2008 Stone Bulldog TR24 Compactor

Diesel
Remote controlled
Extra set of Shoes and Bars
Located in OHIO



Special Price!!

\$10,000

Mi T-M Gas Powered Pressure Washer

On 16' Trailer with
725 Gallon Tank
Located in
ALABAMA



Special Price!!

\$2,200

Polaris 19 Ton Military Surplus Missile Transport Wagon

SPECS: 3 Axles with Air Brake that can be overridden, Leaf-Winter Suspension, Gross Weight: Empty 12,630 lb, Max Load Capacity: 51,000 lb, Maximum Capacity: 8,370 lb, Overall Length: 23', Overall Width: 8' 2", Overall Height: 5' 1", Tire Size: 10:00 x 20 - 14 ply (common tire)



Special Price!!

\$9,000 OBO

YARD SALE



Contact: Mark Griffith mgriffith@fmmafco.com

2007 Miller SRH-444 Welder

MIL 900751-07RC



Special Price!!

\$2,500

1996 Miller Dimension 652 Welder



Special Price!!

\$1,800

1995 Miller Syncrowave

Tig Welder with Coolmate V3



Special Price!!

\$2,400

Miller Mark VIII 8-Pack Welders

Multi-Operator
Many to choose from



Call for Pricing & Availability!

P.O.R.

Miller Mark VI CC/CV 6-Pack Inverter

Late Model



Special Price!!

\$6,500

Miller 12VS Suitcase Wire Feeder

2006 Models
6 Available



Special Price!!

\$700

Gullco Kat Welding System

Carriage,
Oscillator, Torch
and Track
Good condition



Special Price!!

\$8,000

2008 Sullair 825 CFM

Diesel Air Compressor
Located in OHIO



Special Price!!

\$34,000

Diesel Fuel Tank 500 Gallon

RNN 500GALRC
Located in OHIO



Special Price!!

\$800

Knaack 69 Gang Box

Large Qty Available
Reconditioned



Special Price!!

\$375

Knaack 139 2-Door Cabinets



Special Price!!

\$650

Knaack 119RC Field Station



Special Price!!

\$1,200

Knaack Rolling Workbench

Several Models
Available
Reconditioned



Call for Pricing & Availability!

P.O.R.

Enerpac CLR 80013 800 Ton

Hydraulic Ram
13" stroke
4 available



Special Price!!

\$9,500

Used Tandemloc Telescopic Spreader Beams

40,000# Capacity
4 Available



Special Price!!

\$2,800

www.fmmafco.com

World-Wide: 1.513.367.2151

CINCINNATI, OH • BIRMINGHAM, AL • CARSON CITY, NV • CHARLOTTE, NC • EDMONTON, AB CANADA • HOUMA, LA • KANSAS CITY, MO • UNITED KINGDOM

Contact: Tim Kittle

Skip Pans



HAAS SL-30 with Bar Feeder



Boiler Pump Head Cart



Fryer MC-10 Vertical Mill



CNC Plasma



Custom Lifting Device



Fabrication and Machining Facility

Located at our Harrison, Ohio Headquarters, we have 9100 square feet devoted to helping our customers find 'Powerful Solutions' to structural repairs, obsolete component manufacturing, and turnkey fabrication and machining needs.

Our on-staff Certified Welding Inspector ensures that all structural welded components meet AWS D1.1 specifications and maintains all welding procedure specifications with in-house WPS software. Our welding personnel are certified to D1.1 standards as well as American Crane boom repair certified. Our Level II NDT inspector ensures that you will receive defect free components.

We can reverse engineer your obsolete parts utilizing our state of the art Coordinate Measuring Machine and inspection software. Our CAD draftsmen can provide 2 dimensional drawings and 3 dimensional models as required. When you approve the drawings we can manufacture your components utilizing the latest in CNC equipment.

We are proud of our personnel and our facility and invite you to visit. It's another Powerful Solution from F&M MAFCO!

www.fmmafco.com

Toll-Free: 1.800.333.2151

CINCINNATI, OH • BIRMINGHAM, AL • CARSON CITY, NV • CHARLOTTE, NC • EDMONTON, AB CANADA • HOUMA, LA • KANSAS CITY, MO • UNITED KINGDOM

Contact: Tim Kittle

Fabrication and Welding Department Capabilities

• FACILITY

Boom repair area – 4,000 ft²
 Fabrication area – 2,640 ft²
 Machine Shop – 1,800 ft²
 CAD and Inspection – 450 ft²

• METAL FORMING

175 Ton Cincinnati Mechanical Press Brake, 10' capacity
 70 Ton Piranha Ironworker
 Hossfeld Universal Bender
 1/4" x 5' Plate Roll

• SHAPE CUTTING

CNC Plasma Table, 5' x 10' capacity
 Miller Spectrum 500 Portable Plasma Machine

• METAL CUTTING

Pearson Hydraulic Shear, 1/2" x 10' capacity
 Horizontal Band Saw
 Horizontal Mitring Band Saw
 Vertical Band Saw
 Everett 20" Abrasive Chop Saw
 3 ft³ Vibratory Tumbler

• TUBE FORMING

Scotchman GN6 Abrasive Tube Notcher
 Hydrosystem Tube Pinching Machine

• MACHINING

Haas SL-30 CNC Turning Center with Live Tooling and Barfeeder
 Haas TL-1 CNC Lathe 16" x 30"
 Haas TL-3W CNC Lathe 30" x 60"
 Birmingham Engine Lathe 48" x 120"
 Fryer MC-10 CNC Vertical Machining Center with 16 Station Auto Tool Changer
 Millport Vertical Mill with Digital Axis Readout
 Clausing 15" x 50" Engine Lathe with Digital Axis Readout
 Climax Portable Align Boring Machine
 Tooling for Above

• BUILD UP WORK

Automated Roller Build up Machine with Twin Power Sources
 Various Machined Templates for Manual Build up

• MEASURING, ENGINEERING, INSPECTION

Romer Stinger Coordinate Measuring Machine
 NextEngine 3D Scanner
 Krautkramer DM4 Ultrasonic Thickness Gauge

Portable Digital Hardness Tester
 Solidworks 2010 CAD
 Predator CAM Software
 Kyocera Mita Wide Format Scanner and Printer, 36"
 CNC Plasma Shape Cutting and Nesting Software
 C-Spec Welding Procedure Specification Software
 Magnaflux Inspection Equipment
 Various Calipers, Micrometers, Gauge Blocks, etc

• FIELD SERVICE

Fully equipped Service Truck
 Align Boring Work
 Boom Inspection and Repair
 Structural Repairs
 NDT Services

• STRUCTURAL STEEL INVENTORY

A36, A572, A514 (T-1) Plate to 110 ksi yield
 1020, 1026, 4130 Structural Tube to 115 ksi yield
 A36, A572, A514 Angles
 A36 Channel
 A36, A572 Flat Bar
 A36 Round Bar
 4140, 4145, 4150 Round
 All Material above A36 Grade is fully certified and traceable

• WELDING EQUIPMENT

Millermatic 250X Portable GMAW Units
 Lincoln TIG
 Lincoln and Hobart ArcAir and SMAW Power Supplies

• PERSONNEL

American Welding Society Certified Welding Inspector (CWI #09061651)
 American Welding Society Certified Welding Supervisor (CWS)
 American Society of Non-Destructive Testing Level II Inspector
 CAD draftsman and Reverse Engineering Technician
 American Welding Society D1.1 Certified Welders
 Machinist and CNC programmer
 Fabricator/Machinist Apprentice



Specialty Tools



Boom Repair



Safety Ladder



Oil Slinger Flange



Valve Removal Device

www.fmmafco.com

World-Wide: 1.513.367.2151

CINCINNATI, OH • BIRMINGHAM, AL • CARSON CITY, NV • CHARLOTTE, NC • EDMONTON, AB CANADA • HOUMA, LA • KANSAS CITY, MO • UNITED KINGDOM

Contact: Mark Griffith mgriffith@fmmafco.com

Sumner R150 Roustabout

Reconditioned
SUM R150RC



Special Price!!

\$1,450

Sumner R250 Roustabout



Special Price!!

\$1,850

Sumner Grasshopper Pipe Cart

ST401
20 Available!



Special Price!!

\$500

Ridgid 300 Power Threader

On stand with
foot pedal, cutter,
reamer and dies.



Special Price!!

\$2,000

Ridgid Pipe Threader

Reconditioned,
Older Style on Stand



Special Price!!

\$2,050

Ridgid 700 Threaders



Special Price!!

\$825

Greenlee 6805 Pulling Package



Special Price!!

\$4,650

Greenlee 24" Radius Roller

Model 2024R
Reconditioned



Special Price!!

\$85

Greenlee Pipe Racks

GRE 668



Special Price!!

\$310

Greenlee 555 Conduit Bender

Reconditioned



Special Price!!

\$3,200

Greenlee 885 Conduit Bender

Bends 1-1/4" thru 5" Rigid
GRE 885RC



Special Price!!

\$2,500

Ericson Oscar 1066FS

Temporary Power
Distribution Box
ERI 1066FSRC



Special Price!!

\$250

Current 8800 Pulling Package

CUR 8800RC



Special Price!!

\$4,000

Current 680 Ratchet Reel Stand

Reconditioned
Height 28" to 45" Max
CUR 680RC



Special Price!!

\$300

Current 77 Conduit Bender

1/2" thru 2" Rigid
Shoe Group



Special Price!!

\$2,450

Contact: Mark Griffith mgriffith@fmmafco.com



RECONDITIONED TOOLS, EQUIPMENT & SUPPLIES

1.800.333.2151

www.fmmafco.com

Controlling costs is one facet of business that has become a specialty at F&M Mafco. We are able to offer reconditioned tools and equipment to our customers at a fraction of the original cost. All Recon items are remanufactured and come with our assurance and warranty of reliability. Next time you are trying to save dollars on your "tool up," ask your F&M Mafco sales professional what is available from Recon.

The F&M Mafco Recon system helps you maintain margin while adding reliability.

WE SPECIALIZE IN:



CONTACT US — Cincinnati, Ohio Facility - Corporate Headquarters

Shipping:
9149 Dry Fork Road
Harrison, Ohio 45030

Mailing:
P.O. Box 11013
Cincinnati, Ohio 45211-1113

Phone: (513) 367-2151
Toll Free: (800) 333-2151
Fax: (513) 367-0363

Email: WebSales@fmmafco.com

1.800.333.2151

www.fmmafco.com

U.S. Branches

Birmingham, AL
Carson City, NV
Charlotte, NC
Evansville, IN
Houma, LA
Kansas City, MO



Reconditioned Inventory Large

The following list of equipment is available for sale from our fleet and is in very good condition or reconditioned.

All equipment is subject to prior sale or rental without notice. Prices do not include freight or any applicable taxes. Location of the equipment will vary, from branch to branch. As our inventory changes from day to day, please contact your sales rep for up to date inventory. For more details, contact your sales rep or email:

websales@fmmafco.com

Qty	Cranes	Location	Price
1	1989 Broderon # IC200-2B 15 Ton Carry Deck Crane with Cummins Diesel, 36' Boom with Jib, 4-Wheel Steer, Enclosed Cab	AL	\$36,000.00
1	1998 Broderon # IC80-2E 8.5 Ton Carry Deck Crane with Cummins Diesel, 24' Boom with Jib, 2-Wheel Steer, Enclosed Cab	OH	\$24,000.00
1	1997 Broderon # IC80-3E 8.5 Ton Carry Deck Crane with Dual Fuel, 30' Boom with Jib, 4-Wheel Steer, Enclosed Cab	OH	\$26,000.00
1	1991 Broderon # IC80-2D 8.5 Ton Carry Deck Crane with Dual Fuel, Open Cab, 24' Boom with Jib (4386 Hrs.)	OH	\$18,000.00
Qty	Forklifts	Location	Price
1	1989 Yale # GTP060 6000# Solid Tire Forklifts, LP Gas, 182" 3-Stage Mast (900 to 1,700 Hrs.)	NV	\$9,000.00
Qty	Welders	Location	Price
14	1990-2004 Miller Mark VIII 8-Bank Electric Welders	NEV, OH	P.O.R.
1	2005 Miller Big Blue 300P 300 Amp Perkins Diesel CC/CV Welder (3,000 Hrs.)	AL	\$5,650.00
Qty	Inverters	Location	Price
2	2006-2008 Miller XMT350 CC/CV 6-Pack Elec. Welders 208-575 Volt	OH	\$9,500.00
Qty	Air Compressors	Location	Price
1	2008 Sullivan # D185Q11 Palatek 185 Cfm JD Diesel Air Compressor (1,000 Hrs.)	OH	\$8,500.00

2004 JLG 1930ES Scissor Lift JLG 1930ES-04RC

30' Height
Located in Pelham, AL



Special Price!!

\$4,650

2003 Skyjack SJ3219 Scissor Lift RNN SJ3219-03RC

32' Height
Located in Concord, NC



Special Price!!

\$4,500

www.fmmafco.com

World-Wide: 1.513.367.2151

CINCINNATI, OH • BIRMINGHAM, AL • CARSON CITY, NV • CHARLOTTE, NC • EDMONTON, AB CANADA • HOUMA, LA • KANSAS CITY, MO • UNITED KINGDOM

Contact: Mark Griffith mgriffith@fmmafco.com

Qty	Air Compressors	Location	Price
5	2007 Atlas Copco # XAS185 185 Cfm JD Diesel Air Compressors (914-2,489 Hrs.)	AL	\$9,500.00
Qty	Aerial Boom Lifts	Location	Price
1	2000 JLG # 450A 45 and #39 Aerial Articulating 4x4 Z- Boom Lift, Dual Fuel (3,200 Hrs.)	AL	\$9,500.00
2	1999 JLG # 601S 60 and #39 Aerial Straight 4x4 Boom Lift, Diesel Engine (5,721 & 5,170 Hrs.)	OH	\$18,000.00
Qty	Scissor Lifts	Location	Price
1	2006 Sky Jack #3226 26 and #39 Working Ht. x 32 and #34 Wide Scissor Lift Electric	NC	\$5,500.00
1	2004 JLG # 1930ES 19 and #39 Working Ht. x 30 and #34 Wide Scissor Lifts Electric	AL	\$4,500.00
2	2004-2003 Sky Jack # SJ3219 19 and #39 Working Ht. x 32 and #34 Wide Scissor Lifts Electric	NC	\$5,500.00
Qty	Utility Vehicles	Location	Price
1	2007 Kubota # RTV900 4 x 4 Utility Vehicle Diesel with ROPS and AL Dump Body (1,457 Hrs.)	OH	\$7,000.00

JLG UT610 Equipment Trailer

10' Drop Deck
7000# Capacity
Located in Cincinnati



Special Price!!

\$4,000

Reconditioned Inventory Small

Qty	RIGGING & AIR TUGGERS	Price
3100	Crosby 4 ¾ Ton to 14 Ton Shackles, SPA	P.O.R.
512	Crosby 17 Ton Shackles, SPA-Alloy	\$60
501	Crosby 17 Ton Shackles SPA-Galvanized	\$65
163	Crosby 25 Ton Shackles, SPA-Alloy	\$90
115	Crosby 25 Ton Shackles, SPA-Galvanized	\$110
122	Crosby 35 ton Shackles, SPA-Alloy	\$120
94	Crosby 35 Ton Shackles, SPA-Galvanized	\$140
38	Crosby 55 Ton Shackles, SPA-Alloy	\$360
72	Crosby 55 Ton Shackles, SPA-Galvanized	\$375
1	Crosby 55 Ton Shackles, Bolt Type-Alloy	\$400
4	Crosby 55 Ton Shackles, Bolt Type-Galvanized	\$450
27	Crosby 85 Ton Shackles, Bolt Type-galvanized	\$625
11	Crosby 120 Ton Shackles, Bolt Type-Galvanized	\$1,400
3	Crosby 110 Ton Shackles, Bolt Type-Galvanized	\$1,200
2	Crosby 300 Ton Shackles, Bolt Type-Galvanized	\$3,200
9	Crosby 125 Ton Sling Saver Shackles, Bolt Type	\$1,200
4	Crosby 75 Ton Sling Saver Shackles, Bolt Type	\$600
8	Crosby 55 Ton Sling Saver Shackles, Bolt Type	\$425
3	Crosby 35 Ton Sling Saver Shackles, Bolt Type	\$150
2	Crosby # 421 15 Ton 10" ¾" - 7/8" Rope Single Sheave Snatch Blocks	\$400
4	Crosby # 419 8 Ton 8" 5/8" - ¾" Rope Single Sheave Snatch Blocks	\$225
2	Johnson 30 Ton 24" Snatch Blocks	\$2,200
3	Johnson 8 Ton 8" - ¾" Rope Single Sheave Snatch Blocks	\$200

The following list of equipment is available for sale from our fleet and is in very good condition or reconditioned.

All equipment is subject to prior sale or rental without notice. Prices do not include freight or any applicable taxes. Location of the equipment will vary, from branch to branch. As our inventory changes from day to day, please contact your sales rep for up to date inventory.

For more details, contact your sales rep or email: websales@fmmafco.com

Crosby 300 Ton Wide Body Shackle

2 Available



Special Price!!

\$3,200

Crosby 125 Ton Wide Body Shackle

9 Available



Special Price!!

\$1,200

Contact: Mark Griffith mgriffith@fmmafco.com

15	Johnson 4 Ton 4" 3/8" - 1/2" Rope Single Sheave Snatch Blocks	\$60
433	Crosby 1" x 24" E&E Galvanized Turnbuckles, Unused	\$100
28	Crosby 1 3/4" x 24" E&E Galvanized Turnbuckles, Unused	\$375
17	Crosby 2" x 24" E&E Galvanized Turnbuckles, Unused	\$500
8	Crosby 1 1/4" x 24" J&E Galvanized Turnbuckles, Unused	\$130
4	Crosby 1 1/4" x 12" J&E Galvanized Turnbuckles, Unused	\$60
12	Crosby 7/8" x 12" J&J Galvanized Turnbuckles, Unused	\$50
7	Crosby 1 1/2" x 18" J&J Galvanized Turnbuckles, Unused	\$200
151	Crosby 1 3/4" x 24" J&J Galvanized Turnbuckles, Unused	\$450
5	Crosby 2 1/2" x 24" J&J Galvanized Turnbuckles, Unused	\$850
2	Harrington 3 Ton Chain Puller with 20' Lift & Slip Clutch (Unused)	\$500
10	Harrington 6 Ton Chain Puller with 10' Lift & Slip Clutch (Unused)	\$800
1	Coffing 50 Ton Chain Hoist with 20' Lift	\$9,500
2	Coffing 40 Ton Chain Hoists with 20' Lift	\$8,500
2	Harrington CB 20 Ton Chain Hoists with 20' Lift	\$2,850
3	Harrington CB 20 Ton Chain Hoists with 30' Lift	\$3,200
8	Harrington CB 10 Ton Chain Hoists with 30' Lift	\$1,750
16	Harrington CB 10 Ton Chain Hoists with 20' Lift	\$1,500
100+	Harrington 3/4 - 6 Ton Chain Pullers	P.O.R.
190+	Tractel 3/4 - 6 Ton Chain Pullers	P.O.R.
300+	Harrington-CM-Coffing Tractel- 1-6 Ton Chain Hoists	P.O.R.
2	Hilman # 100-OT 100 Ton Straight Rollers	\$700
8	Hilman # 10-OT 10 Ton Straight Rollers	\$110
1	IR # FA5A-24MXI 11,000# Long Drum Air Tugger with Manual Brake (2005)	\$18,000
4	IR # FA5A-24MXI 11,000# Long Drum Air Tugger with Manual Brake (2008) with Remote	\$19,500
2	IR # K6UL 10,000# Long Drum Air Tuggers	\$16,000
1	IR # FA2B 2,500# Long Drum Air Tugger	\$3,500
1	IR # K4U 4,000# Short Drum Air Tugger	\$6,000
1	IR # HUL40 4,000# Long Drum Air Tugger	\$6,800
2	IR # HU40 4,000# Short Drum Air Tuggers	\$5,850
2	IR # HU 2,500# Short Drum Air Tuggers	\$4,250
1	Renfroe # SCPA 3 Ton Plate Clamp	\$250
2	Renfroe # TLA-6-A 6 Ton Plate Clamps	\$500
1	Renfroe # SCPA 8 Ton Plate Clamp	\$450
160	Coffing, Vanguard, Jet, Tractel, 2 to 10 Ton Beam Clamps	P.O.R.
4	Harrington # GT100 10 Ton Beam Trolleys	\$1,000
2	Coffing # CTA-100P 5 Ton Beam Trolleys	\$450
1	Skarnes # M-12 6,000# Rol-A-Lift	\$500
5	Skarnes # M-10 5,000# Rol-A-Lifts	\$450
2	Skarnes # M-8 4,000# Rol-A-Lifts	\$400
13	General # S-18 25 Ton Girder Clamps	\$950
10	General # S-17 25 Ton Girder Clamps 8"-18" Fixed	\$900
3	General # S-16 20 Ton Girder Clamps 16"-24" Fixed	\$800

Wacker PD2 Gas Powered Water Pump

Honda Engine
2 available



Special Price!!

\$700

Crosby 24,000# Swivel Hoist Ring

22 Available



Special Price!!

\$350

Unused Harrington SNER2020S Electric Hoist

2 Ton with Trolley
18' Lift
Located in Concord, NC



Special Price!!

\$3,500

Ridgid 141 Pipe Threader

2 1/4" thru 4" Pipe



Special Price!!

\$1,150

Contact: Mark Griffith mgriffith@fmmafco.com

18	General # S-15 20 Ton Girder Clamps 8"-18" Fixed	\$700
5	General # S-11 10 Ton Girder Clamps 3.5"-12" Adjustable	\$450
54	General # S4A 10 Ton Fixed Jaw Girder Clamps	\$475
25	General # USC-3A 3 Ton Super Clamps 6"-8"	\$400
200+	General 3-10 Ton Girder /Beam Clamp Fixed & Adjustable	P.O.R.

Qty	RIDGID TOOLS	Price
1	Ridgid # 1224 Pipe Threaders	\$5,400
3	Ridgid # 535 Pipe Threader (Flat Top)	\$2,750
16	Ridgid # 535 Pipe Threaders (Old Style)	\$2,250
1	Ridgid # 300 Compact Threader	\$2,600
3	Ridgid # 1822 Pipe Threader	\$2,500
21	Ridgid # 300 Pipe Threaders	\$2,000
26	Ridgid # 700 Pipe Threaders	\$850
450+	Ridgid # 12R Die Heads 1/8" to 2" For 700's	\$35 & up
9	Ridgid # 161 4" to 6" Geared Threaders	\$1,750
16	Ridgid # 141 2 1/8" to 4" Geared Threaders	\$1,150
2	Ridgid # 418 & 318 Oilers	\$120
9	Ridgid # 1A Pipe Cutters	\$65
37	Ridgid # 2A Pipe Cutters	\$70
4	Ridgid 1/8" - 2" Wide Pipe Cutters	\$70
240+	Ridgid 10" - 48" Steel & Aluminum Pipe Wrenches (Used & Unused) (Off Brand)	P.O.R.
4	Ridgid 18" - 36" Chain Wrenches	P.O.R.
6	Ridgid # 711 RH 1/8" - 2" Die Heads (For 1224)	\$275
8	Ridgid # 815A Universal Die Heads	\$210
14	Ridgid # 815 Universal Die Heads	\$185
11	Ridgid # 811A Universal Die Heads (For 535/300)	\$190
77	Ridgid # 811 Universal Die Heads (For 535/300)	\$185
50+	Ridgid Dies (Various Types & Sizes) (Unused)	P.O.R.
157	Ridgid # 460 Tri-Stands	\$250
57	Ridgid # 450 Tri-Stands	\$225
4	Reed # R450 Tri-Stands	\$200

Qty	GREENLEE TOOLS	Price
7	Greenlee # 555R 1/2"-2" Electric Benders (New Style)	\$3,200
18	Current # 77 1/2"-2" Electric Benders	\$2,650
3	Greenlee # 855 1/2" - 2" EMT, IMC, Rigid Benders	\$5,500
2	Greenlee 1/2"-2" EMT # 555 Shoe Groups	\$1,050
4	Current 1/2"-2" EMT # 77 Shoe Groups	\$950
6	Current 1 1/2" - 2" # 77 Rigid/IMC Shoe Groups	\$750
3	Current 1 1/2"-2" # 77 Rigid Shoes	\$600
5	Current 1/2"-1 1/4" # 77 Rigid Shoes	\$300
2	Current 2" # 77 EMT Shoes	\$325
6	Current 1 1/2" # 77 EMT Shoes	\$200
4	Current 2" # 77 IMC Shoes	\$210

Ridgid 161 Pipe Threader

4" thru 6"



Special Price!!

\$1,750

Saf T-Cart Bottle Cage

Model STS-20
4,500# Capacity
4 Available



Special Price!!

\$1,000

Current IMC Shoe Set

For Greenlee 555 and
Current 77 Benders



Special Price!!

\$750

Greenlee 975 Electric Hydraulic Pump



Special Price!!

\$1,000

Contact: Mark Griffith mgriffith@fmmafco.com

3	Current 1 1/2" # 77 IMC Shoes	\$150
2	Greenlee 1 1/2"-2" Rigid/IMC # 555 Roller Supports	\$400
1	Greenlee 1 1/2"-2" EMT Roller Support	\$500
4	Greenlee 1 1/2"-2" Rigid 555 Shoes	\$650
6	Greenlee 1/2" - 1 1/4" Rigid 555 Shoes	\$325
4	Greenlee 1/2"-1 1/4" EMT 555 Shoes	\$375
11	Greenlee 2" EMT 555 Shoes	\$400
5	Greenlee 1 1/2" EMT 555 Shoes	\$200
1	Greenlee 1 1/2"-2" SBC Shoes (Rigid, EMT, IMC)	\$475
1	Greenlee # 881CT 2 1/2"-4" Hyd. One Shot EMT, IMC, Rigid Benders	\$8,750
6	Greenlee # 885 1 1/4" to 5" Hydraulic Benders (Rigid Only)	\$2,750
1	Greenlee # 884 1 1/4" to 4" Hydraulic Bender (Rigid Only)	\$2,400
1	Greenlee # 882 1 1/4" to 2" Hydraulic Bender (EMT Only)	\$1,300
1	Greenlee # 1,818 Manual Benders 1/2" - 1 1/2" (Rigid/EMT Only)	\$2,050
12	Greenlee # 1,800 1/2"-1" Manual Benders	\$560
1	Current # 750 1/2"-1" Manual Bender	\$475
8	Greenlee # 1801 1 1/4"-1 1/2" Manual Benders	\$660
2	Greenlee # 1813 Bending Table (881/881CT)	\$1,300
2	Greenlee # 1802 Bending Table (1802)	\$1,000
2	Current # 280 Bending Tables (GRE 1802)	\$800
1	Current # 8800 8,000# Pulling Package	\$4,000
3	Current # 88 8,000# Puller	\$1,800
14	Greenlee # 6001 6,500# Pullers	\$1,800
1	Greenlee # 7506 1/2" - 4" SS Hydraulic Knockout Sets	\$800
6	Greenlee # 7306 1/2" - 2" SS Hydraulic Knockout Sets	\$475
2	Greenlee # 7306SB 1/2" - 2" SS Hydraulic Knockout Sets	\$575
36	Greenlee # 650 12" Hanging Sheaves Standard	\$65
20	Greenlee # 652 18" Hanging Sheaves Standard	\$185
27	Greenlee # 653 24" Hanging Sheaves Standard	\$220
4	Greenlee # 6024 24" Hanging Sheave 6500#	\$325
22	Greenlee # 6036 Triple Sheaves	\$400
6	Greenlee # 37179 Force Gauges For 6001 Puller	\$285
1	Greenlee # 639 Twin Yoke 24" R/A Hanging Sheave	\$250
69	Greenlee # 2024R 24" Radius Rollers	\$75
6	Greenlee # 2030R 30" Radius Rollers	\$80
7	Greenlee # 20249R 24" Radius Rollers	\$260
25	Current # 9524SR 24" Straight Rollers	\$65
1	Greenlee # 980 Hydraulic Pump	\$1,600
3	Greenlee # 975 Hydraulic Pumps	\$1,000
25	Greenlee # 767 Hydraulic Hand Pumps	\$148
15	Greenlee # 746 Hydraulic Rams	\$225
118	Greenlee # 668 Conduit Racks	\$350
1	Greenlee # 910 Wire Cart	\$500

Greenlee 980 Electric Hydraulic Pump

GRE 980RC

Special Price!!

\$1,600



Greenlee 6001 Tugger

GRE 6001RC

Special Price!!

\$1,800



1996 Miller Dimension 652 Welder

Special Price!!

\$1,800



Phoenix 300# Rod Oven

PHX 300RC

Special Price!!

\$600



Contact: Mark Griffith mgriffith@fmmafco.com

3	Greenlee V-Carts	\$310
2	Greenlee # 656 Reel Stands	\$325
7	Greenlee # 683 Reel Stands	\$175
2	Sumner # 80 Reel Stands (Same as 656)	\$300
6	Sumner # 70 Reel Stands (Same as 683)	\$150
3	Current # 680 Reel Stands (Same as # 656)	\$300
5	Current # 670 Reel Stands (Same as # 683)	\$150
2	Current # 660 Reel Stands (Same as # 687)	\$85
Plus:	Large Qty. Tubing Benders, Hand Benders, & Greenlee Access.	P.O.R.
Qty	WELDING EQUIPMENT	Price
4	Miller # 12RC Suitcase Wire Feeders (2007)	\$800
4	Miller # 12RC Suitcase Wire Feeders (2006)	\$750
8	Miller # 12VS Xtreme Suitcase Wire Feeders (2009)	\$800
9	Miller # 12VS Xtreme Suitcase Wire Feeders (2008)	\$800
9	Miller # 12VS Xtreme Suitcase Wire Feeders (2007)	\$750
4	Miller # 12VS Xtreme Suitcase Wire Feeders (2006)	\$700
8	Lincoln # LN25 Wire Feeder with Contactor & Gun (2006)	\$1,250
4	Lincoln # LN25 Wire Feeder with Contactor & Gun (1999)	\$950
2	Lincoln # LN25 Wire Feeder with Contactor & Gun (1996-1997)	\$850
1	Lincoln # LN25 Wire Feeder with Contactor & Gun (1993)	\$750
1	Miller Bobcat # 225NT 225 Amp Gas Welder (1998) (4353 Hrs.)	\$1,650
14	Miller Mark VIII 8-Pack Electric Welders (Various Years)	P.O.R.
11	Miller # SRH-444 400 Amp Electric Welders (2007)	\$2,500
30	Miller # 652 Dimension 600 Amp Electric Welders (1996-1997)	\$1,600
2	Miller # CP302 300 Amp Electric Welders (2006)	\$1,400
2	Miller # 180 Electric Mig Welders (2008)	\$650
60	Miller 50' 24 Volt Extension Cord (Unused) MIL 242208050	\$175
21	Phoenix 300# Rod Ovens	\$525
4	Phoenix 50# Rod Ovens Type 5 (New Style) (Unused) with Cart	\$300
4	Phoenix 50# Rod Ovens	\$185
18	Phoenix 20# Type 2 Rod Ovens (New Style)	\$185
45	Phoenix 10# Type 1 # 1205500 Rod Ovens (New Style)	\$120
44	Phoenix 10# Rod Ovens	\$100
26	Keen # K-450 300# Rod Ovens	\$475
7	Keen # K-50 50# Rod Ovens	\$175
30	Keen # K-15S 10# Rod Ovens	\$95
24	Keen # K-10 15# Rod Ovens (14" Rods)	\$95
30+	General Cage Type Line Up Clamps 10" to 14"	P.O.R.
40+	Anthony Bottle Carts (Various Types & Sizes)	P.O.R.
24	Victor # CSR460A-510 Acetylene Regulators	\$95
18	Victor # SR460A-510 Acetylene Regulators	\$65
10	Victor # VGS460a-510 Acetylene Regulators	\$70

Unused Tweco Spraymaster Mig Gun

TWE MS2153545RG
250 Amp



Special Price!!

\$200

Victaulic VE-106 Groove-n-Go Pipe Groover

VCT VE106RC



Special Price!!

\$2,200

Knaack 89 Storagemaster Chest

KNA 89RC



Special Price!!

\$500

Sumner Cricket Pipe Cart

SUM 782699RC



Special Price!!

\$275

Contact: Mark Griffith mgriffith@fmmafco.com

Qty	WELDING ELECTRODES	Price
1200 LB	Esab # E8018-B6 3/32"	\$5.00 lb
5680 LB	Esab # E9015-B9 3/32"	\$10.00 lb
4500 LB	Esab # E9018-B3 3/32"	\$3.70 lb
650 LB	Esab # E9018-B3 1/8"	\$3.30 lb
Qty	PIPE BEVELERS	Price
1	Mathey # 2SA 6" to 12" Pipe Beveler Standard	\$850
1	H & M # 2C-30 26"-30" Pipe Beveler, Standard	\$2,500
Qty	GANG BOXES & PIPE EQUIPMENT	Price
500+	HUGE QUANTITY JUST ARRIVED (KNAACK) (EXCELLENT)	P.O.R.
36	Greenlee # 4860 Gang Boxes (89 Style)	\$450
13	Greenlee # 5760TD 2 - Door Utility Cabinets	\$750
4	Greenlee # 5660 2 - Door Utility Cabinets	\$650
3	Greenlee # 3448 2 - Door Utility Cabinets	\$500
9	Greenlee # 4872 Gang Boxes	\$650
10	Greenlee # 3660 Gang Boxes	\$400
4	Greenlee # 3360 Gang Boxes	\$325
19	Greenlee # 3048 Gang Boxes	\$275
9	Greenlee # 3548 Work Benches	\$300
22	Knaack # 119 Forman's Boxes	\$1,200
23	Knaack # 139 2 - Door Utility Cabinets	\$700
19	Knaack # 129 2 - Door Utility Cabinets	\$700
48	Knaack # 109 2 - Door Cabinets	\$650
12	Knaack # 99 4 - Door Cabinets	\$675
5	Knaack # 1000 Gang Boxes with Lifting Eyes (Piano Master)	\$800
3	Knaack # 91 Gang Boxes with Drop Front 72" Wide	\$600
42	Knaack # 90 Gang Boxes	\$550
149	Knaack # 89 Gang Boxes	\$500
21	Knaack # 69 Gang Boxes	\$375
4	Knaack # 4830 Deep Gang Boxes	\$300
7	Knaack # 4830 Gang Boxes	\$275
5	Knaack # 4824 Gang Boxes	\$200
1	Knaack # 50 2 - Door Rolling Work Cabinet	\$475
11	Knaack # 40 2 - Door Rolling Work Cabinets	\$400
15	Knaack # 44 2 - Door 4-Drawers Rolling Work Cabinets	\$425
7	Knaack # 47 2 - Door No Drawers Rolling Work Cabinets	\$350
6	Knaack # 49 2 - Door Rolling Work Cabinets	\$550
5	Knaack # 100 Bi-Fold Boxes	\$850
17	Delta # 1-674990 Forman's Boxes	\$1,150
23	Delta # 1-684990 Gang Boxes with Drop 72" Wide (91 Style)	\$600
87	Delta # 1-689990 Gang Boxes 72" Wide (90 Style)	\$550
18	Delta # 1-682990 Gang Boxes (89 Style)	\$475
7	Delta # 1-694990 2 - Door Utility Cabinets (109)	\$650
10	Delta # 1-678990 6 - Drawer Work Benches	\$750

Greenlee 851 PVC Heater

GRE 851RC



Special Price!!

\$385

Enerpac P462 Hydraulic Pump



Special Price!!

\$650

OHAUS 5000# Platform Scale

Digital Readout
Model VX31P5000L



Special Price!!

\$800

Hytorc Stealth 4 Head

HYT STEALTH-4RG



Special Price!!

\$2,800

Contact: Mark Griffith mgriffith@fmmafco.com

11	Delta # 1-698990 2 Drawer Work Benches	\$700
35	Sumner # ST-401 Grasshopper Pipe Carts	\$500
45	Sumner # 782699 Cricket Pipe Carts	\$275
13	Ridgid # 64642 4-Leg Adjustable Roller Pipe Stands	\$85
73	Ridgid # VJ99 3-Leg V-Head Pipe Stands	\$50
32	Sumner # ST-801 3-Leg V-Head Pipe Stands	\$40
13	Sumner # ST-802 3-Leg Roller Head Pipe Stands	\$50
1	Dearman # D250SS 1"-8" SS Universal Jackscrew Pipe Clamps	\$450
3	Dearman # D230SS 2"-8" Mini Fit Pipe Clamps	\$450
Qty	HYDRAULIC EQUIPMENT	Price
3	Power Team # RH603 60 Ton Hollow Type Rams 3" stroke	\$825
4	Enerpac # P462 Hydraulic Hand Pumps	\$650
1	Hy Torq # HY-3MXT 1" Drive Torque Wrenches	\$2,500
1	Hy Torq # STEALTH-4 Hydraulic Torque Wrench (Unused)	\$2,800
Qty	MISC. EQUIPMENT	Price
3	GPE 1000 PSI Electric Hydrostatic Test Pumps 2 GPM 110 Volt	\$650
8	Thern # 4HP2M50H 3000# 10" Drum 3 Ph. Manual Winches with Pendant Controls	\$950
15	Steel Containers 8' x 40'	\$2,400
3	Steel Containers 8' x 20'	\$2,000
4	Spider (NISSO) 42" x 24" x 60" 550# Cap. # 4 Angel Wings	\$1,250
10	Spider (NISSO) 42" x 24" x 50" 450# Cap. # 2 Angel Wings	\$850
1	Spreader Beam 220 Ton 42" Diameter X 42' Long (Specs Included)	\$18,000
1	Spreader Beam 220 Ton 42" Diameter X 16' Long (Specs Included)	\$12,000
1	TPI # PB48 48" Floor Fan	\$325
1	TPI # TB36-B 36" Floor Fan	\$250
5	TPI # UHP24 24" Pedestal Fans	\$120
6	TPI # UHP30 30" Pedestal Fans	\$140
3748	Mar-Mac 16 Gauge Tie Wire 3.5# per Spool (Unused)	\$4
Qty	POWER TOOLS & ELEC. EQUIPMENT	Price
2	Ingersoll Rand # 2934P2 1" Drive Pneumatic Impact Wrenches Super Duty Pistol Grip	\$1,350
1	Ingersoll Rand # 2925 1" Drive Pneumatic Impact Wrench Pistol	\$800
1	Ingersoll Rand # 295A 1" Drive Pneumatic Impact Wrench	\$300
9	Hilti # TE55 Electric Rotary Hammers	\$600
21	Hilti # TE25 Electric Rotary Hammers	\$400
10	Hilti # UH650 ½" Electric Drills	\$160
6	Hitachi # D13VF ½" Electric Drills (Unused)	\$80
12	Hitachi # D13VF ½" Electric Drills (Used)	\$65
12	Dewalt # DW235G ½" Electric Drills	\$90
15	Dewalt # DW223G ⅜" Electric Drills	\$55
1	Dewalt # DW130V ½" VSR Electric Spade Handle Drills	\$100
1	Dewalt # DW505K ½" Electric Hammer Drills	\$80
16	Dewalt # D28110 4 ½" Electric Angle Grinders	\$45
2	Dewalt # D28115N 5" Electric Angle Grinders	\$80

Chromalox Portable Heater

Model DRA-15-43
4 Available



Special Price!!

\$650

Smog Hog Model SG-2

3 Available
Located in OHIO



Special Price!!

\$1,500

Ericson Explosion Proof Stringer Lights

50'
5 Lights
Model 12350TPI-BL
7 available



Special Price!!

\$600

Dewalt 7" Angle Grinder

Model D28494S



Special Price!!

\$100

Contact: Mark Griffith mgriffith@fmmafco.com

9	Dewalt # D28114 4 1/2" - 5" Electric Angle Grinders	\$75
13	Dewalt # DW818 4 1/2" Electric Angle Grinders	\$55
82	Dewalt # D28494S 7" Electric Grinders 6000 RPM	\$100
4	Dewalt # DW493 7"- 9" Electric Angle Grinders	\$95
20	Dewalt # DW494 9" Electric Angle Grinders	\$95
5	Dewalt # DW474 7" Electric Angle Grinders	\$80
44	Dewalt # DW831 5" Electric Angle Grinders	\$70
2	Dewalt # 4278 6" Electric Straight Grinders	\$120
13	Dewalt # DW309K 11.8 Amp Elec. Sawzalls	\$110
3	Dewalt # DW294 3/4" Electric Impact Wrenches	\$130
3	Dewalt # DW292 1/2" Electric Impact Wrenches	\$100
6	Dewalt # D28770K Deep Cut Band Saws	\$210
51	Dewalt # D28770 Deep Cut Band Saws	\$185
6	Milwaukee # 0234-1 1/2" Electric Drills	\$80
2	Milwaukee # 6236N Deep Cut Port. Band Saws	\$190
52	Milwaukee # 6236 Deep Cut Port. Band Saws	\$185
4	Milwaukee # 6230N Deep Cut Port. Band Saws	\$180
4	Milwaukee # 6230 Deep Cut Port. Band Saws	\$175
4	Milwaukee # 6225 Band Saws	\$150
9	Milwaukee # 6536-21 Electric Sawzalls (Excellent Condition)	\$110
1	Milwaukee # 6509-22 Electric Super Sawzalls (Unused)	\$100
9	Milwaukee # 6509-22 Electric Super Sawzalls	\$85
12	Milwaukee # 6375-20 7 1/4" Electric Circular Saws	\$125
12	Milwaukee # 6477-20 Electric Worm Drive Saws	\$110
14	Milwaukee # 6155-20 6" Electric Angle Grinders	\$100
55	Milwaukee # 6148 4 1/2" Electric Angle Grinders with Lock	\$55
14	Milwaukee # 6068 7"-9" Electric Angle Grinders	\$110
8	Milwaukee # 6080-20 7" 6000 RPM Elec. Angle Grinders	\$100
11	Milwaukee # 5243-20 6" Electric. Straight Grinders	\$160
11	Milwaukee # 5223 5" Electric Straight Grinders	\$140
1	Milwaukee # 5196 Electric 2" Die Grinders	\$140
7	Milwaukee # 5211 Electric 3" Die Grinders	\$150
Qty.	Proto, Snap-On, & Williams Torque Wrenches	P.O.R.
1000+	Proto 1/4" to 3" Combination Wrenches	\$10 & up
500+	Proto 1 1/16" to 4 7/8" Slugging Wrenches	\$15 & up
20+	Proto & Armstrong 3" to 12" HD Bridge Clamps	P.O.R.
108	CEP # 6506-S 50 Amp Buzz Temporary Power Supplies	\$250
16	CEP # 6506-GU 50 Amp Buzz Temporary Power Supplies	\$250
2	Alegro # 9514-25 8" Electric Blowers with 25' Duct Hose	\$300
7	Texas Pneumatic # TX-8AM 8" x 12" Air Movers	\$250
	Plus: Large Quantity Power Tools, Hand Tools, Core Drill Bits, C-Clamps, Tubing Benders, Extension Cords, Impact Sockets 3/4 to 2 1/2" Drive, Socket Sets, Abrasives, Consumables, Safety Equipment, & Construction Supplies	

Rolling Baskets

125 Available
Located in
Carson City, NV



Special Price!!

\$10 each

Used Combination Wrenches



Special Price!!

\$P.O.R.

Used Slugging Wrenches



Special Price!!

\$P.O.R.

Ridgid 12R Ratchet Threader

RID 38555RC
With handle



Special Price!!

\$32



Cincinnati, Ohio Facility Corporate Headquarters

Shipping:
651 Enterprise Drive
Harrison, Ohio 45030

Mailing:
P.O. Box 11013
Cincinnati, Ohio 45211-1113

Phone: (513) 367-2151
Toll Free: (800) 333-2151
Fax: (513) 367-0363

U.S. Branches:

Birmingham, AL
Carson City, NV
Charlotte, NC
Houma, LA
Kansas City, MO

Canada Branch:

Edmonton, AB



United Kingdom Locations:

Mailing and Shipping:
Tim Fox (F&M MAFCO, Inc.)
Ellan Vannin, Bury Road
Great Barton
Bury St. Edmunds
IP31 2TS

Business: (44) 1284-787713
Mobile: (44) 7970-851658
Email: tfox@btconnect.com

Mailing and Shipping:
Steve Cooney (F&M MAFCO, Inc.)
Oaklodge, Oakwood Drive
Ravenshead, Nottingham
NG16 9DP
United Kingdom

Business: (44) 1623-798662
Email: steve.cooney@btconnect.com
Email: guyscooney@gmail.com



www.fmmafco.com



Sales • Service • Rental • Parts
CONSTRUCTION TOOLS, EQUIPMENT, WELDING,
CRANES, INDUSTRIAL GASES & SUPPLIES

Toll-Free: 1.800.333.2151
World-Wide: 1.513.367.2151
www.fmmafco.com