



BAR CODE READERS

Allen Bradley
2755 Series
Sick Optic
CLV-260/CLV-290
Symbol

CNC CONTROLS

Allen Bradley
7300/8200/8500/8600
Series • 9/Series
**Fanuc/General
Numerics**
15T/18T
General Electric
550/1050/2000 Series
Modicon
2184/3220/3240 Series

Siemens
System 3

Kearney & Trecker
Gemini D17

DISPLAYS

Borroughs
General Electric
IEE/Argus

FASTENING SYSTEMS

Atlas-Copco
Tensor

Beta Tech
SC-FSCE/SC-FSCX
SC-FSC3

GSE
CS400/CS50/ CS4000
M290

Ingersol Rand
Micro Tas
Stanley
T700/T801

INDUSTRIAL CONTROLS

Barber Colman
Bryant
Cobilt
Cutler Hammer
Delta Tau
Firing Circuits
Gisholt
Gleason
Heald
Hurco
Icon
Landis
Moog
Pegasus
RVA
Rybett
Sciaky
Vega

LIGHT CURTAINS

Data Instruments
Dolan-Jenner
Honeywell
Opcon
Pinnacle Microguard
Sick Optic
STI
MS 4100/4300/4440 • OMC-2

Triad

METAL DETECTORS

LOMA
Superscan

NC CONTROLS

Bendix
Cincinnati Milacron
General Electric
Giddings & Lewis
Jones & Lamson
Kearney & Trecker
Pratt & Whitney
Sundstrand
Warner Swasey
Westinghouse

PRESS LOAD MONITORS

IDC
TM 885 HK

PROGRAMMABLE CONTROLLERS

Allen Bradley
IMC 120/121/123
PLC 2/3/4/5
SLC 100/150/500
1791 Block I/O
Cincinnati Milacron
APC 1/500
GE Fanuc
Micro-90 • Series 1/3/6
Series 90/30 • Series 90/70
Genius I/O • Logitrol 500

Honeywell
IPC 90/620

Mitsubishi
Melsec A

Modicon
Micro 84/084/184/384
484/584/884/984
PC984

Omron Reliance
Automate 15/20/30/35/40
Automax/DCS 5000

Siemens
PLC-130WB
S5-100U/115U/135U/155U

Square D
SY/MAX 100/300/400
500/600/650/700

Texas Instruments
5TI • 300/500/510/520/530
PM550

TAPE READERS

Addmaster
Cincinnati Milacron
Decitek
Digitronics
Eeco
General Electric
Ghielmetti
Oktronics
PSI
Remex
Slo-Syn
Tally

Electronics Repair

TERMINALS

Aydin
ABB
Allen Bradley/Panelview
Ball Brothers
Bailey
Bosch
Conrac
Dotronics
Eaton/IDT
Fanuc
General Electric
Honeywell
Intercolor
Lucas Deeco
Metra
Mitsubishi
NEC
Nematron
Sony
TCP
Xycom

TIMERS

Taylor Instruments
58432-401-04

WELDER CONTROLS

Hobart
LTEC
Lincoln Electric
Medar
Miller
Nadesco
Pertron
Robotron
Sciaky
Square D
EQ5100/5230/5240/5300
Weltronic

Call us for a quote!
800.325.4774



PSI REPAIR SERVICES, INC.

©2013 PSI Repair Services, Inc., is a subsidiary of Phillips Service Industries, Inc.

11900 Mayfield, Livonia, MI 48150-1710 USA

PSI Repair Services, Inc., Canada
P. O. Box 21073, Windsor, Ontario N9B 3T4

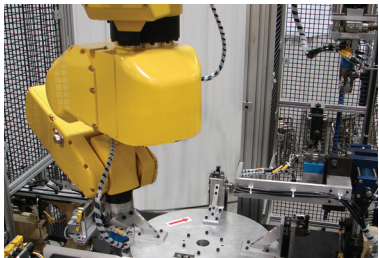
Phone: 800.325.4774

CAGE Code 5N884 • ISO 9001:2008 • FAA FAR-145 Repair Station Certified

psi-repair.com



RSI-13-107 REV 6/2013



ELECTRICAL

Controls
Encoders/Resolvers
Motors
Pendants
Displays
Drives

MECHANICAL

Ball Screws
Bearings
Cycloidal Drives
Cylinders
Harmonic Drives
Servo Valves
Wrists

MANUFACTURERS INCLUDE...

ASEA
Adept
Arobotech
Canon
Cincinnati Milacron
DeVilbiss
Fanuc
GMF
Genmark
Graco
Honda
Kawasaki
Kuka
MicroVision
Prab
Schunk
Sumitomo
Unimate
Zenith

Call us for a quote!
800.325.4774



PSI REPAIR SERVICES, INC.

©2013 PSI Repair Services, Inc., is a subsidiary of Phillips Service Industries, Inc.

11900 Mayfield, Livonia, MI 48150-1710 USA

PSI Repair Services, Inc., Canada
P. O. Box 21073, Windsor, Ontario N9B 3T4

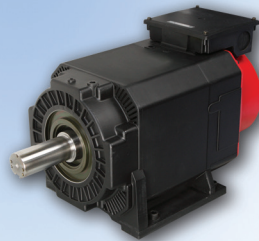
Phone: 800.325.4774

psi-repair.com



RSI-13-107 REV 6/2013

CAGE Code 5N884 • ISO 9001:2008 • FAA FAR-145 Repair Station Certified



Motion Control Repair

AC & DC MOTOR DRIVES AND CONTROLLERS

Allen Bradley
 Bridgeport
 Brown Boveri
 CSR/Contraves
 Cleveland Machine
 Culter Hammer
 Eaton
 Emerson
 Fanuc
 General Electric
 AC/DC 2000
 HI-AK
 Siltron Analog/Digital
 Speed Variator
 Valutrol
 Gettys/Gould
 ICC Gould
 Indramat
 Inland
 Louis Allis
 MCS
 Magnetek
 Ormec
 PTI
 Pacific Scientific (PacSci)
 Parametrics
 Pratt
 Reliance
 Auto Max • Flex Pak
 Max Pak Plus Min Pak
 Sanyo Denki
 Servo Dynamics
 Siemens
 Square D
 Telemecanique
 Toshiba
 Vee-Arc
 Vexta
 Warner Swasey
 Westamp
 Westinghouse
 Yaskawa

AC & DC SERVO MOTORS

ASEA
 Allen Bradley
 Baldor
 Baumuller
 Brown Boveri
 CEM
 CSR
 Chiron
 Contraves
 Custom Servo Motors
 Electro-Craft
 Emerson
 Fanuc
 Franz Kessler
 GMF
 General Electric
 General Numeric
 Gettys
 Gould
 Hammelmann Corp.
 Hammond
 Hanning Elektro
 HK Porter
 ICC Gould
 Indramat
 Inland
 Kawasaki
 Kollmorgen
 Kuka
 Lincoln
 Louis Allis
 Magnetek
 Mannesmann-Demag
 Mavilor
 Midwest Thermal Spray
 Modicon
 Moog
 Motion Control Systems
 OSAI
 Oriental
 PMI
 Pacific Scientific
 Porter Peerless
 Reuland
 Reliance
 SEM
 Siemens
 Warner & Swasey
 Westinghouse

AGV's

Barrett
 Fata
 Telemecanique

ELECTRONIC TORQUE WRENCHES

Atlas-Copco
 Cooper
 GSE
 Ingersoll-Rand
 Stanley

ENCODERS

Allen Bradley
 Anilam
 Avtron
 BEI
 Baldwin
 Balluff
 Celesco
 Coleman
 Condec/Unimate
 Data Technology
 Datex
 Disc Instruments
 Dynamics Research
 Dynapar
 ECCI
 Elm Systems
 Encoder Products
 Fanuc
 Heidenhain
 Hohner
 Indramat
 Kuka
 Kuroda
 Leine & Linde
 Litton
 PSI
 RSG
 Renco
 Sanyo Denki
 Siemens
 Stegmann
 T&R
 Tamagawa
 Trump Ross
 Unico
 Unimate
 Warner Swasey
 Yaskawa

HOISTS

ARO
 Coffing
 Demag
 Duff Norton

POWER SUPPLIES

ABB
 AC-DC
 Acme
 Allen Bradley
 B&K Precision
 Bailey
 DEC
 Datapower
 Fanuc
 General Electric
 Gould
 HC
 Hewlett Packard
 LH Research
 Lambda
 Modicon
 NCR
 Pioneer Magnetics
 Powermate
 Powerone
 Powertec
 Sola
 Sorensen
 Standard Power
 Texas Instruments
 Unimate

TACHS AND RESOLVERS

Clifton
 Electrocraft
 Fasco
 General Electric
 Harowe
 Sierracin Magnadyne
 Singer Kearfott

TRACER HEADS

Moog

Call us for a quote!
 800.325.4774



PSI REPAIR SERVICES, INC.

©2013 PSI Repair Services, Inc., is a subsidiary of Phillips Service Industries, Inc.

11900 Mayfield, Livonia, MI 48150-1710 USA

PSI Repair Services, Inc., Canada
 P. O. Box 21073, Windsor, Ontario N9B 3T4

Phone: 800.325.4774

psi-repair.com



RSI-13-107 REV 6/2013



ACTUATORS ROTARY/LINEAR

Andco
Bird-Johnson
CAE
DeVilbiss
Duplicomatic
Ex-Cell-O
Flo-Tork
Graco
Helac
Hydroline
Lewa
Logansport
MTS
Micro Precision
Miller
Moog
Motion Controls
Parker
Rotac
Supfina
Surftran
Team
Tork-Mor

CYLINDERS

Ace Controls
American Crane
Anker-Holth
Caterpillar
Clark
Commercial Shearing
Dart
Dowty
Enerpac
Euclid
Gallion
Hanna
Heil
Hyco
Hydroline
Hyster
International
Joy
Lee-Norse
Letourneau
Link Belt
Michigan Clark
Miller
Parker Hannifin

Pressotechnik
Schrader Bellows
Terex
Tiny Tim
Unimation
Unit Rig
Wabco

HYDRAULIC MOTORS PISTON/VANE/GEAR

Adan
Bendix
Bignozzi
Bosch
Brueninghaus
Charlynn
Cincinnati
Commercial Shearing
Daikin
Danfoss
Delaval
Delavan
Delta
Denison
Donzelli
Double A
Dowmax
Dowty
Dynapower
Dynex/Rivett
Eaton
Energy
Flender
Fujitsu
Gen Tech
H.P.I.
Hagglund
Hartmann
Hawe
Houdaille
Hydreco
Hydrokraft
Hydromatik
Hydura
IMO
Icon
John Barnes
Jones & Lamson
KYB
Kline
Lamina
Linde
Lucas
MTS

Moog
Motion Controls
Nachi
Nichols
Nippon
Nutron
Oilgear
Olsen Controls
Orbmark
Parker
Planet
RVA
Racine
Rexroth
Rogers
SAI
Staffa
Sumitomo
Sundstrand
TRW/Ross
Vickers
Voith
Volvo
Webster
White
WSI

HYDRAULIC PUMPS PISTON/VANE/GEAR

Allweiler
Bosch
Brueninghaus
Cessna
Cincinnati
Commercial Shearing
Continental
Daikin
Dake
Delaval
Delavan
Delta
Denison
Double A
Dowty
Dynapower
Dynex/Rivett
Eaton
Enerpac
Flygt
Fife
Gorman-Rupp
Goulds
Greenlee
Gusher
HPI
HPM
Hawe

Hele Shaw
Hydrastar
Hydraulik-Ring
Hydreco
Hydrokraft
Hydromatik
Hydura
ITT-Jabsco
John Barnes
John Deere
Kline
Kobe
Kracht
LFE
Leistritz
Linde
Lucas
MTE
Nachi
Northern
Oilgear
Parker
Pioneer
Poclair
RVA
Racine
Rexroth
Robbins & Meyers
Roper
Sumitomo
Sundstrand
Sunflo
Teel
Towler
Trunninger
Tuthill
Tyrone
Uchida
Union
Vickers
Viking
Voith
Volvo
Webster
Wepuko
Yuken

HYDRAULIC VALVES FLOW CONTROL/ PRESSURE/CONTROL/ DIRECTIONAL

Atos
Barksdale
Bendix
Bosch
Cincinnati
Continental
Daikin

Delta
Denison
Disa-matic
Double A
Dynaguide
Dynex/Rivett
Fluid Controls
General Precision
Gresen
HPM
Hawe
Heald
Hunt
Hydromatik
Hydro-Technik
Integral Hydraulik
John Barnes
Jordan
Logan
Marotta
Nachi
North American
Oilgear
Olmsted
Parker
Racine
Raymond
Republic
Rexroth
Romheld
SR
Skinner
Sun
Teledyne
Towler
Vickers
Wandfluh
waterman
Yuken

HYDROSTATIC DRIVES

Atlas
Fauver
Kubick
Melvin
Sundstrand
Vickers

FEED PANELS

Ex-Cell-O
Heald
Vickers

Call us for a quote!
800.325.4774



PSI REPAIR SERVICES, INC.

©2013 PSI Repair Services, Inc., is a subsidiary of Phillips Service Industries, Inc.

11900 Mayfield, Livonia, MI 48150-1710 USA

PSI Repair Services, Inc., Canada
P. O. Box 21073, Windsor, Ontario N9B 3T4

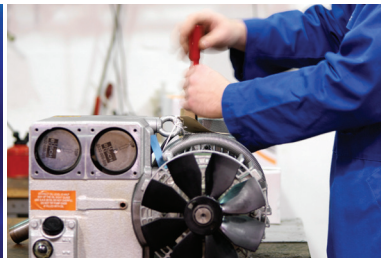
Phone: 800.325.4774

CAGE Code 5N884 • ISO 9001:2008 • FAA FAR-145 Repair Station Certified

psi-repair.com



RSI-13-107 REV 6/2013



**SPEED REDUCERS,
GEARBOXES,
VARIATORS AND
CLUTCHES**

Allen/Translift
Bauer
Boston Gear
Candy
Cleveland
Cone Drive
Cosmic
David Brown
Demag
Dodge
Dojen
Drake
Dresser
Duff-Norton
Falk
Farrel
Ferguson
Flender
Foote-Jones
Force Controls
GMF
Hamilton
Hansen

Hub City
Ingersoll Rand
Linkbelt
Marle
Mechanical/Handling
Mico
Midwest Brake
Morse
Nuttall
Philadelphia
Pick-O-Matic
Reliance
Rexnord
Sew-Eurodrive
Shuttleworth
SM-Cyclo
Sommer
Sterling
Sterns
Sumitomo
Terrell
Textron
Ti-Gear
US Electric
Von Ruden
Zero Max

**THICK STOCK
PUMPS
WARREN/ALSTROM
VACUUM PUMPS,
DIFFUSION PUMPS
AND BLOWERS**

Alcatel
Beach-Russ
Becker
Bellows
Boekel Hyvac
Busch
Ceilcote
Cenco
Cooper
Dayton
Dresser
Duroflow
Edwards
Fuji
Gardner Denver
Gast
Graham
Hetzl
Hoffman

Hyvac
Impco
Kinney
Lamson
Medo
M&D Pneumatic
Nash
Orion
Paxton
Pfeiffer Balzers
Piab
Precision-Scientific
Rader
Roots
Sargent Welch
Siemens
Sihi
Smoot
Spencer
Stokes
Sutorbilt
Travaini
Tuthill
Ulvac
Vacuum Barrier
Varian
Warren/Alstrom
Werie-Rietschle
Whitlock



**PNEUMATIC
MOTORS**

Haskel
Horton
SC
Sprague
Teledyne

**PNEUMATIC
PUMPS**

Graco
Haskel
Horton
SC
Teledyne Sprague
Warren Rupp
Wilden

Fischer
Fisher
GH Bettis
Herion
Humphrey
Lincoln
Numatics
Parker
Ross
Schrader-Bellows
Sinclair Collins

**Call us for a quote!
800.325.4774**



PSI REPAIR SERVICES, INC.

©2013 PSI Repair Services, Inc., is a subsidiary of Phillips Service Industries, Inc.

11900 Mayfield, Livonia, MI 48150-1710 USA

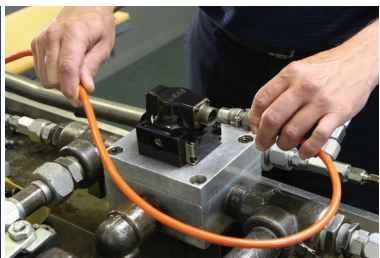
PSI Repair Services, Inc., Canada
P. O. Box 21073, Windsor, Ontario N9B 3T4

Phone: 800.325.4774

psi-repair.com



RSI-13-107 REV 6/2013



ABEX-CORPORATION

Series:
410/415/425/450
Abex-Denison
SEO.3

ATCHLEY

Series:
206 218
207 231
208 241
211 261
215 275

BULLARD

Horizontal Series:
U-518433 .150 Gain
U-518435 .250 Gain
U-518436 .300 Gain
U-518438 .100 Gain
U-518439 .250 Gain

Vertical Series:
U-518434 .160 Gain
U-518437 .250 Gain

CINCINATTI

Series:
177825
189732
192525
302170

DOWTY-MOOG

Series:
300
4551
4552
4553

DYNAMIC

Series:
5
10
12
15
16-5
45

HONEYWELL

Series:
V7037
V7038
V7041
V7058
V7059

HUNKAR

Model:
86031
86186
86200
86222
86225
86288

KAWASAKI

Model:
4Q1631 (S)
4Q1730 (L)
4Q1731 (L)
4Q1733 (L)

MOOG

Series:
22 76 D064
31 77 D079
32 78 D631
34 79 D641
35 755 D642
60 760 D643
62 770 D644
63 A076 D645
72 D061 E076
73 D062 E077

OILGEAR

Model:
L500654
L502521
L503044A
L703518
L709253
L709435
L714339-100

OLOFSSON TOOL COMP BARS

30-138 with Dials/Pointers
30-139

PEGASUS

Series:
120 140 180
121 141 1160G
122 142 1280
130 160 1282
131 161 1640
132 162

RAVA

Model:
61SV01
61SV02
61SV04
61SV08
61SV15
61SV30

SLI INDUSTRIES

Series:
PCS
V105
V702
V710

TOKYO PRECISION

Series:
401F
403F

UNIMATION

Model:
181-127A1R
R127A1

VICKERS

Series:
CGE-02
CGE-06
CGE-10
SA4
SC4
SF4
SM4

WERTH ENGINEERING

Flex Bar Assemblies

Call us for a quote!
800.325.4774



PSI REPAIR SERVICES, INC.

©2013 PSI Repair Services, Inc., is a subsidiary of Phillips Service Industries, Inc.

11900 Mayfield, Livonia, MI 48150-1710 USA

PSI Repair Services, Inc., Canada
P. O. Box 21073, Windsor, Ontario N9B 3T4

Phone: 800.325.4774

psi-repair.com



RSI-13-107 REV 6/2013



MACHINE SLIDES

Gilman
Okuma
Olofsson
Setco

MACHINE TOOLS

Acroloc
Amada
American Eagle
American GFM
American Lathe
American Phauter
American Tool
Behrens
Bendix
Boston Digital
Bridgeport
Brown & Sharpe
Bryant
Bullard
Burgmaster
Cargill
Charmilles
Cincinnati Gilbert
Cincinnati Milacron
Cone Blanchard
Cross
Cross Huller
Daewoo
DeHoff
Detroit Broach
DeVlieg
Di Acro
Elox
Ex-Cell-O
Excellon
F. Joseph Lamb
Fadal
Fellows
GA Gray
Gardner Denver
Giddings & Lewis
Gleason
HR Kreuger
Hardinge
Heald
Heller
Hillyer
Hitachi-Seiki
Huffman

Hurco
Ingersoll
Jones & Lamson
Kasper
Kearney & Trecker
Kingsbury
Lamb
Landis
LaSalle
LeBlond Makino
Leybold-Heraeus
Lodge & Shipley
Lucas
Masco
Master Machine
Mazak
Mitsubishi
Monarch
Moog
Mori-Seiki
Motch
New Britain
Newcor
Oerlikon
Okuma
Olofsson
Onsrud
Pneumo Precision
Place
Pratt & Whitney
R&B Machine
Rambaudi
Saginaw Machine
Sciaky
Sheffield
SMT Pullmax
Springfield
Stiles Machine
Strippit
Sundstrand
Toshiba
Tree Machine
Triway Machine
Tru-Drill
Trumpf America
Universal Instrument
Warner & Swasey
Wasino
WA Whitney
Werth
White Consolidated
Wiedemann
Wotan

MANUFACTURERS

20th Century
Alois Kuhn
American Ballscrew
Barnes
Beaver Aerospace and
Defense, Inc.
Cosmo
Emcor
Gamfior
Ho-Fong
IBL
Modern American
NSK
Nachi
PGM
PSI
Rockford
SKF
Saginaw
Sargent
Shuton
Snyder
Star
Steinmeyer
THK
Thread-Craft
Torrington
Tsubaki
Warner Electric
Weidon

ROBOTS

ASEA
Cincinnati
DeVilbiss
Fared
GMF
Graco
Hitachi
Hobart
Kawasaki
Motoman
Nordson
Prab
Unimation

Did you know that
we also manufacture
NEW ball screws?

Call us for a quote!
800.325.4774



PSI REPAIR SERVICES, INC.

©2013 PSI Repair Services, Inc., is a subsidiary of Phillips Service Industries, Inc.

11900 Mayfield, Livonia, MI 48150-1710 USA

PSI Repair Services, Inc., Canada
P. O. Box 21073, Windsor, Ontario N9B 3T4

Phone: 800.325.4774

psi-repair.com



RSI-13-107 REV 6/2013

CAGE Code 5N884 • ISO 9001:2008 • FAA FAR-145 Repair Station Certified



Bearing Repair

PSI'S RESTORATION SERVICE IS AVAILABLE ON:

Fafnir
FAG
Kaydon
NSK
NTN
Rotek
SKF
THK
Timken
Torrington
and other manufacturers, foreign and domestic.

Call us for a quote!

800.325.4774

- Sizes range from 400mm O.D. to 1800mm O.D.
- Inner and outer bores, bearing cups and cones are ground on a machine specially fitted with a computerized wheel dresser.
- All machined surfaces are checked on our three-axis coordinate measuring machine.
- 30" optical comparator with 100x magnification for checking proper geometries on replacement rollers.
- Replacement roller elements are designed and checked on our ProE system.
- Hardness verified on all components.



PSI REPAIR SERVICES, INC.

©2013 PSI Repair Services, Inc., is a subsidiary of Phillips Service Industries, Inc.

11900 Mayfield, Livonia, MI 48150-1710 USA

PSI Repair Services, Inc., Canada
P. O. Box 21073, Windsor, Ontario N9B 3T4

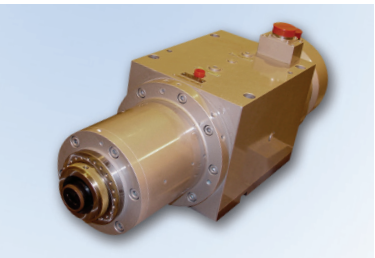
Phone: 800.325.4774

psi-repair.com



RSI-13-107 REV 6/2013

CAGE Code 5N884 • ISO 9001:2008 • FAA FAR-145 Repair Station Certified



Spindle Repair

Advance Control
 Boneham
 Boyar-Schultz
 Bridgeport
 Brown & Sharpe
 Bryant
 Bullard
 Cincinnati
 Cincinnati Twin Grip
 Colonial Tool
 Cross
 Dumore
 Ekstrom-Carlson
 EWL
 Ex-Cell-O
 Excellon
 Federal Mogul
 GMN
 Gamet
 Gamfior
 Gatco
 Gilman
 Hammelmann

Heald
 Heald Red Head
 Hessop
 Huffman
 Ibag Zurich
 Ingersoll-Rand
 KO Lee
 Kingsbury
 Kitagawa
 LeBlond-Makino
 LOH
 Mazak
 Milwaukee
 Moore
 Nagel
 NSK
 Nomoco
 Okomoto
 Okuma
 Olofsson
 Onsrud
 Parker Majestic
 Pope

Precise
 Ransburg-Gema
 Reid
 SIP
 SKF
 Sames
 Setco
 Spin-O-Matic
 Taft-Pierce
 Toshiba
 Toyoda
 UVA
 Voumard
 Westwind
 Whitnon
 XLO
 Zagan

Call us for a quote!
800.325.4774

- Precision balancing and computerized vibration analysis are used in final testing.
- Testing at speeds to 150,000 RPM.
- Certification.
- Rapid turnaround.



PSI REPAIR SERVICES, INC.

©2013 PSI Repair Services, Inc., is a subsidiary of Phillips Service Industries, Inc.

11900 Mayfield, Livonia, MI 48150-1710 USA

PSI Repair Services, Inc., Canada
 P. O. Box 21073, Windsor, Ontario N9B 3T4

Phone: 800.325.4774

psi-repair.com



RSI-13-107 REV 6/2013

CAGE Code 5N884 • ISO 9001:2008 • FAA FAR-145 Repair Station Certified



DISTRIBUTED CONTROL SYSTEMS

Bailey Net 90/INFI 90

CIU Components
OIU/MCS Components
OIS 20 Components
PCU Modules

Fisher Provox 6500 Series

Including HP1000
Computers and
HP7906 Disk Drives

Foxboro Spectrum

AIM/CCM/FIO/UCM/
UFM/UIO Components

Foxboro

I/A

Foxnet

Communication
Ports and Control

Interspec

Communication
Gateway and
Components

Microspec Modules

Spec 200 Modules

Videospec II & III Modules

Honeywell

TDC 2000

TDC 3000

ELECTRONIC

ABB Stromberg

ULMA 2010

ULMA 2020 Hole

Detectors

Athena

Temperature Controllers

Bailey

820 Series

7000 Series

Batch Controllers

Loop Controllers

Sequence Controllers

Barber Colman

Maco III/Maco 8000

Components

Temperature Controllers

Bristol Babcock

Loop Controllers

Coen

Signal Processor

UV/IR Detector

Control Gaging

Gage Controllers

DME

Temperature Controllers

Daytronic

Signal Conditioning
Modules

Devron/Measurex

Calcoil Power Modules

Digital Techniques

Gage Controllers

ETS Equipment

Temperature Controllers

Eurotherm

Temperature Controllers

Fischer & Porter

Loop Controllers

Fisher Controls

AC² Controllers

Foxboro

Display Stations

Loop Controllers

Gammaflux

Temperature Controllers

Gemco

Programmable Limit

Switch

General Electric

Temperature Controllers

Hardy Instrument

Weight Converters

Honeywell

Loop Controllers

LFE

Temperature Controllers

Leeds & Northrup

Loop Controllers

Love Controls

Temperature Controllers

MKS

Loop Controllers

Marposs

Gage Controllers

Gages

Micro-Poise

Wax Marker Units

Moore Instruments

Alarm Modules

Moore Products

Computer Interface

Loop Controllers

Nordson

Temperature Controllers

Omega

Temperature Controllers

Panalarm

Alarm Modules

Partlow

Temperature Controllers

Powers Process Control

Controllers

RKC

Temperature Controllers

Rochester Instruments

Alarm Modules

Ronan

Alarm Modules

Syron

Double Blank

Analyzer

Taylor

Loop Controllers

"MOD 30" Components

Transmation

Temperature Controllers

United Electric

Temperature Controllers

Watlow

Temperature Controllers

Yokagawa

Halogen Leak Detectors

Process Control Repair

POWER SUPPLIES

All Types/Voltage Ranges

WEIGHING EQUIPMENT

Ishida

Checkweighers

RLC

S

Z

Call us for a quote!

800.325.4774



PSI REPAIR SERVICES, INC.

©2013 PSI Repair Services, Inc., is a subsidiary of Phillips Service Industries, Inc.

11900 Mayfield, Livonia, MI 48150-1710 USA

PSI Repair Services, Inc., Canada

P. O. Box 21073, Windsor, Ontario N9B 3T4

Phone: 800.325.4774

psi-repair.com



RSI-13-107 REV 6/2013

CAGE Code 5N884 • ISO 9001:2008 • FAA FAR-145 Repair Station Certified



**CHART
RECORDERS**

- Astro Med
- Bristol Babcock
- Chessell
- Esterline Angus
- Fischer & Porter
- Fisher Controls
- Foxboro
- Gould
- Recorders/Amplifiers
- Honeywell
- Leeds & Northrup
- Taylor

DISPLAYS

- Air Gauge
- Column Gauge Displays
- Dearborn Gauge
- Column Gauge Displays
- Freeland
- Column Gauge Displays

**PNEUMATIC
CONTROLLERS**

- Fisher Controls
- Loop Controllers
- Foxboro
- Loop Controllers
- Leybold-Heraeus
- Vacuum Controllers
- Moore Products
- Loop Controllers

**TRANSMITTERS/
TRANSDUCERS**

- Brooks Instruments
- Mag Flow Transmitters
- Dahl
- IP/PI Transducers
- Drexel Brook
- Level Transmitters
- Temperature Transmitters
- Fairchild
- Boosters
- Regulators
- Relays
- Fischer & Porter
- Mag Flow Transmitters
- Fisher Controls
- Absolute/Gauge/
DP/Position/
Temperature Transmitters
- Foxboro
- Absolute/Gauge/
DP/Mag Flow/
Temperature/Level
Transmitters
- Moore Industries
- Alarm Modules
- Signal Conditioners
- Temperature Transmitters
- Robertshaw Controls
- Level Transmitters

- Transducers
- Rochester Instrument
Systems
- Alarm Modules
- Signal Conditioners
- Signal Transmitters
- Ronan
- Temperature Transmitters
- Rosemount
- Absolute/Gauge/
DP/Temperature/
Level/Mag Flow
Transmitters
- Setra
- Transducers
- Taylor
- Absolute/Gauge/ DP/
Level/ Temperature/
Flow Transmitters
- Temposonic
- Level Transmitters
- Valmet
- Consistency Transmitters

**Call us for a quote!
800.325.4774**



PSI REPAIR SERVICES, INC.

©2013 PSI Repair Services, Inc., is a subsidiary of Phillips Service Industries, Inc.

11900 Mayfield, Livonia, MI 48150-1710 USA

PSI Repair Services, Inc., Canada
P. O. Box 21073, Windsor, Ontario N9B 3T4

Phone: 800.325.4774

psi-repair.com



RSI-13-107 REV 6/2013

CAGE Code 5N884 • ISO 9001:2008 • FAA FAR-145 Repair Station Certified