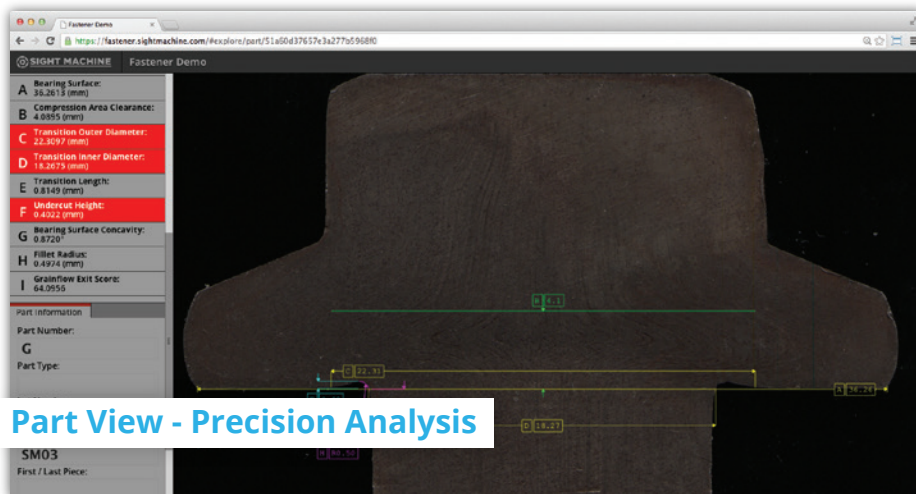


Sight Machine Vision Intelligence

Fast, flexible and robust inspection

Sight Machine Vision Intelligence is an exponential improvement in automated inspection. Vision Intelligence is camera agnostic - it captures images from new and existing cameras and combines them with flexible algorithms to provide reliable pass/fail decisions. Vision tests can be written in hours and updated remotely. Vision Intelligence is inspection for modern manufacturing.

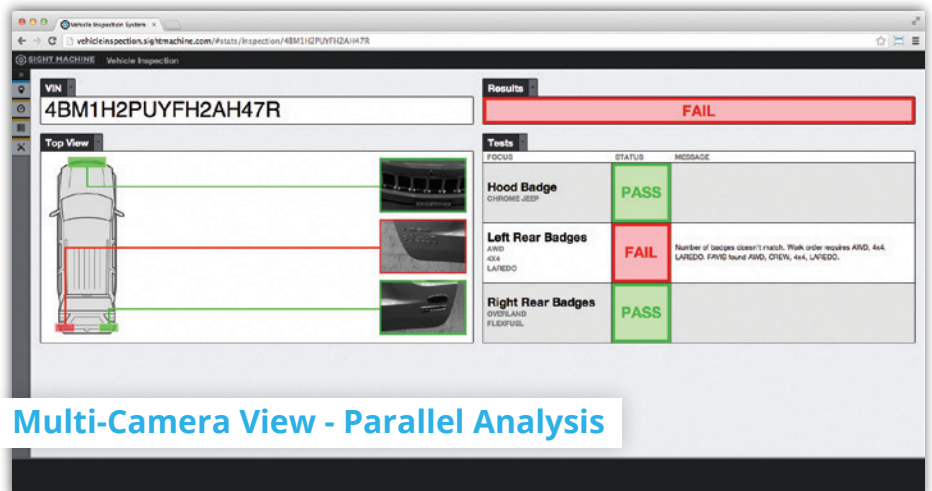


Key Benefits

- Applicable to a wide range of industries and applications
- Compatible with leading cameras, new or already installed
- Setup and reconfigure in hours instead of weeks
- Designed for immediate, remote support
- Produces objective and consistent pass/fail decisions

What's different:

Traditional machine vision is a 30 year-old technology that is focused on hardware. It is costly and inflexible. Sight Machine is modern software that connects hardware - new and already installed - to make inspection flexible and robust.



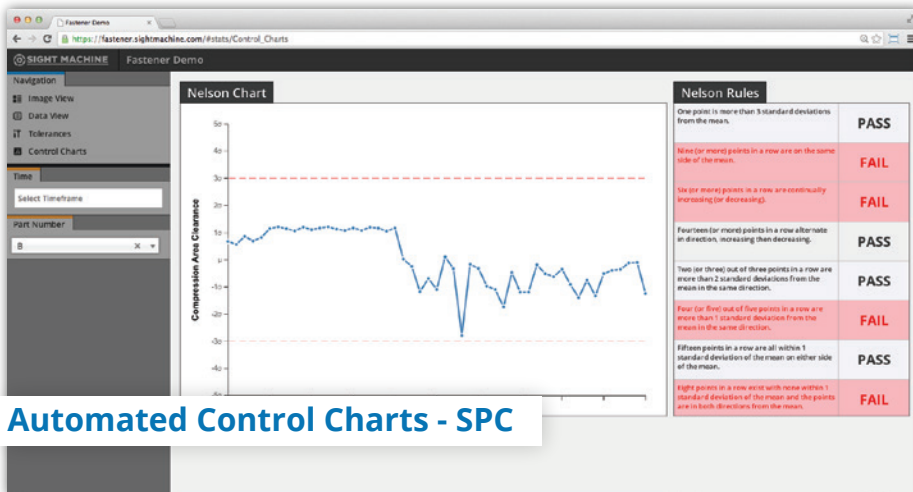
Quality controlled. Opportunity unleashed.

Sight Machine brings advanced Big Data and visual analytics technologies to the factory floor, helping manufacturers meet their toughest quality and operational challenges.

Sight Machine Quality Intelligence

Store, retrieve and analyze quality data for every inspection - automatically

Sight Machine Quality Intelligence stores all of your inspection data, from generated inspection results all the way down to the raw images. Because all inspection data is automatically stored, factories can now easily retrieve and share quality data in real time, across operations, and with customers. Quality Intelligence goes even further, providing real time insights on correlations, root causes, and trends. Quality Intelligence transforms inspection to intelligence.



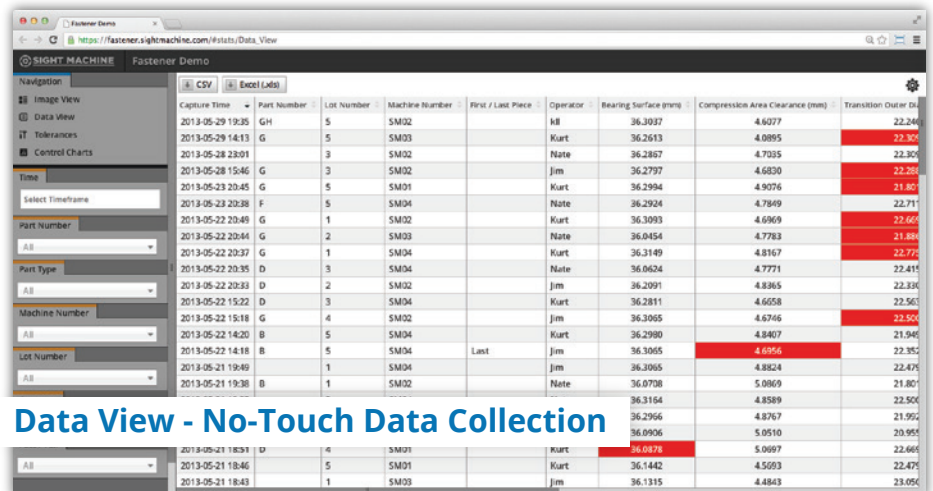
Automated Control Charts - SPC

Key Benefits

- Easily searches and filters data
- Enables irrefutable record keeping
- Harnesses your data for root cause detection
- Automatically graph SPC
- Facilitates additional testing of stored images
- Pushes customized email and text alerts
- Uses the internet for access anytime, anywhere

What's different:

Visual data should be a rich source of insight- however with today's antiquated automated inspection, the data is erased as soon as a pass/fail call is made. Sight Machine Quality Intelligence automatically collects images and generated test results and then analyzes the data in real time. By saving and managing the data, you can control your process, share data with customers, and demonstrate your control of quality.



Capture Time	Part Number	Lot Number	Machine Number	First / Last Piece	Operator	Bearing Surface (mm)	Compression Area Clearance (mm)	Transition Outer Dia
2013-05-29 19:35	GH	5	SM02		Kurt	36.3037	4.6077	22.246
2013-05-29 14:13	G	5	SM03		Kurt	36.2613	4.0895	22.306
2013-05-28 23:01		3	SM02		Nate	36.2867	4.7035	22.306
2013-05-28 15:46	G	3	SM02		Jim	36.2797	4.6830	22.286
2013-05-23 20:45	G	5	SM01		Kurt	36.2994	4.9076	21.80
2013-05-23 20:38	F	5	SM04		Nate	36.2924	4.7849	22.711
2013-05-22 20:49	G	1	SM02		Kurt	36.3093	4.6969	22.666
2013-05-22 20:44	G	2	SM03		Nate	36.0454	4.7783	21.888
2013-05-22 20:37	G	1	SM04		Kurt	36.3149	4.8167	22.772
2013-05-22 20:35	D	3	SM04		Nate	36.0624	4.7771	22.411
2013-05-22 20:33	D	2	SM02		Jim	36.2091	4.8365	22.838
2013-05-22 15:22	D	3	SM04		Kurt	36.2811	4.6558	22.563
2013-05-22 15:18	G	4	SM02		Jim	36.3055	4.6746	22.506
2013-05-22 14:20	B	5	SM04		Kurt	36.2980	4.8407	21.946
2013-05-22 14:18	B	5	SM04	Last	Jim	36.3065	4.6956	22.352
2013-05-21 19:49		1	SM04		Jim	36.3065	4.8524	22.473
2013-05-21 19:38	B	1	SM02		Nate	36.0708	5.0069	21.807
						36.3164	4.8589	22.506
						36.2956	4.8767	21.952
						36.0906	5.0510	20.955
2013-05-21 18:51	D	4	SM01		Kurt	36.0478	5.0997	22.666
2013-05-21 18:46		5	SM01		Kurt	36.1442	4.5203	22.473
2013-05-21 18:43		1	SM03		Jim	36.1315	4.4843	23.056

Data View - No-Touch Data Collection

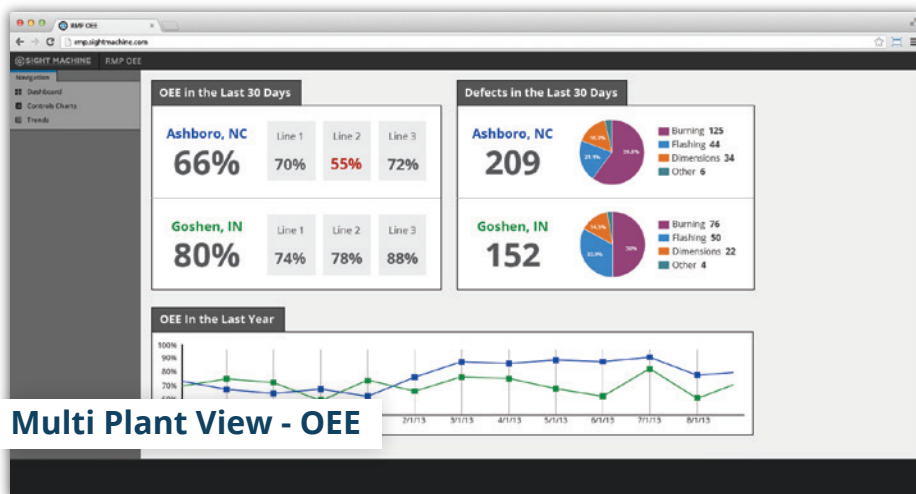
Quality controlled. Opportunity unleashed.

Sight Machine brings advanced Big Data and visual analytics technologies to the factory floor, helping manufacturers meet their toughest quality and operational challenges.

Sight Machine Operational Intelligence

Global view of manufacturing operations and OEE

Sight Machine's Operational Intelligence seamlessly combines sensor, numeric and visual data into a comprehensive technology for real time analysis of manufacturing. Image data is the richest source of insight, and insight into quality is critical to sophisticated operations. By combining image data, sensor data, operational results and quality, Operational Intelligence provides a global view of manufacturing operations, from a single plant floor through an entire supply chain. Operational Intelligence is the foundation for modern manufacturing.



Key Benefits

- Aggregates, stores and analyzes sensor and visual data
- Combines quality, availability, and performance data to enable unique insights into OEE and operations
- Provides real time views into global line and plant performance

What's different:

Modern manufacturers must harness data for holistic operating insight. Sensor networks are rapidly advancing and work in one silo, while quality works in another. By uniquely combining quality data down to the part level with sensor and efficiency data, Sight Machine enables comprehensive insight into operations.



Quality controlled. Opportunity unleashed.

Sight Machine brings advanced Big Data and visual analytics technologies to the factory floor, helping manufacturers meet their toughest quality and operational challenges.

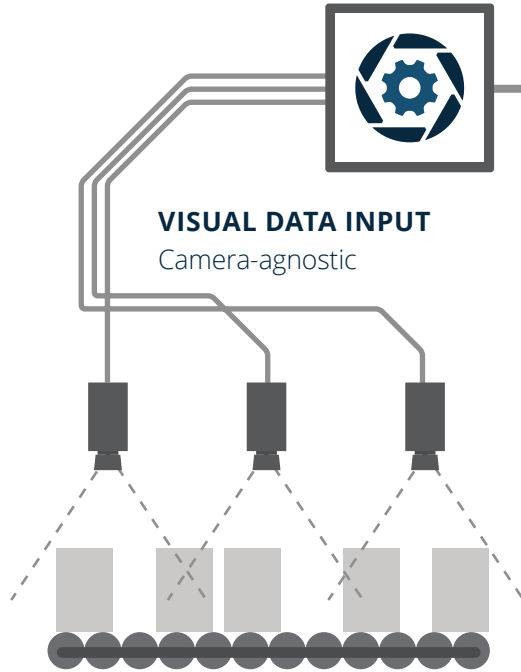
Sight Machine Vision Intelligence

Sight Machine Quality Intelligence

Sight Machine Operational Intelligence

LOCAL PROCESSING AND DISPLAY

Real-time vision processing and responsive action on-site



VISUAL DATA INPUT

Camera-agnostic

REMOTE SERVICES

Storage, analytics and remote updates



CONNECTED DEVICES

Real-time analytics and alerts anywhere



OPERATING ANALYTICS

OEE, custom KPIs



DISTRIBUTED OPERATIONS

Multi-sensor and multi-plant



Sight Machine Features

	Vision Intelligence	Quality Intelligence	Operational Intelligence	Current Systems
Pass / Fail Inspection	✓			✓
Easy to Use Web Interface	✓	✓	✓	
Camera Agnostic	✓	✓	✓	
Other Sensor data (weight, temperature, etc)	✓	✓	✓	✓
Fast Remote Updates	✓	✓	✓	
Image, Measurement, and Data Storage		✓	✓	✓
Effortless Data Retrieval and Export		✓	✓	
Charting and Analytics		✓	✓	
Operating Analytics / OEE			✓	
Global View			✓	
Custom KPIs			✓	