

WELCOME TO-----



ZDA COMMUNICATIONS US LLC.



- COMPANY: ZDA COMMUNICATIONS US LLC.
- ADD: 100-3 Forum Dr. Suite 192, SC 29229
- E-MAIL: [sales@zdacomm.com](mailto:sales@zdacomm.com)
- TEL: 803-608-4122
- FAX: 803-736-5310
- COMPANY SITE: <http://www.zdacomm.com>

## About Us

ZDA Communications US LLC is specializing in the design and manufacture of wireless communication antennas within the 100 MHz to 6 GHz spectrum. Our extensive range of antennas includes: Flat Panel, Sector Antennas, Omni Antennas, Yagi Antennas, Rubber Duck Antennas, Broadband and Ultra Wide Band Antennas for the Wireless, Security and Civil markets. Standard antennas can be used for applications including: WiMAX, Wi-Fi, Cellular Telecoms, RFID, NLOS, ISM, PCS, AWS, MMDS, Surveillance and Telemetry applications.

Continuing roll out of new products with advanced technologies, and a dedication to expanding our existing range of antennas and of designing custom made solutions ensure ZDA Communications US LLC continue to provide high quality, cost effective antennas of outstanding performance.

We provide our customer with quality antennas at a very competitive price. Each antenna is individually tested before leaving our manufacturing facility and is covered by a two year limited parts warranty term.

## Our Mission

**ZDA Communications US LLC is committed to provide our customers with the best quality products at the most competitive price. We will satisfy our customers with on time delivery at all the time and with the best service.**

## ■■■■■■■■■■ Why ZDA Communications ■■■■■■■■■■

- More than ten years of excellence in developing and producing cutting edge antennas for communication industry.
- Complete QC/QA starts from material selection to final delivery. Each of our products is tested using HP network analyzer and SUMMITEK inter-modulation test instrument before the packaging.
- Exceedingly adaptable to advanced technology for rolling out of new products in addition to custom design to fit your particular needs.
- Highly competitive pricing with excellent quality.
- We believe: "Customers is always the first". i.e. we will do all we can to satisfy your needs
- We conduct our business with integrity and strongly believe that only mutual benefiting relationship will last forever
- We promise you high quality products with professional service

### ZDA Communications' Antennas *Quality Antennas for All Your Needs!*

#### ◆ Antenna Products

◆ Yagi antennas	P3-6
◆ Grid Parabolic antennas	P7-10
◆ Solid dish antennas	P11
◆ Omni-directional antennas	P12-17
◆ Flat panel antennas	P18-20
◆ Sector antennas	P21-23
◆ In-building wireless antennas	P24-
◆ Mobile antennas	P25-28
◆ Rubber Duck antennas	P29-30
◆ Customized antennas	

- [UHF450MHz antennas](#)
- [700MHz antennas](#)
- [800MHz antennas](#)
- [900MHz antennas](#)
- [1200—1500 MHz antennas](#)
- [1800—1900 MHz antennas](#)
- [1700/2100MHz AWS antennas](#)
- [2.4 GHz antennas](#)
- [2.6 GHz antennas](#)
- [3.5/3.65 GHz antennas](#)
- [5GHz antennas](#)
- [In-building wireless antennas](#)
- [Mobile antennas](#)
- [Rubber duck antennas](#)

ZDA Communications's High-Performance **Yagi antenna** Series is constructed of 6061-T6 Aluminum for outstanding service life. Individual elements are braised to the main beam for permanent attachment. These antennas have high gain and good front to back performance to minimize external interference. They can be mounted in vertical or horizontal polarization. provides the user with anodized aluminum boom, solid elements, Heavy duty mounting hardware Waterproof Design all-weather operation. ZDA Communications's yagi antenna features at cost-effective price.

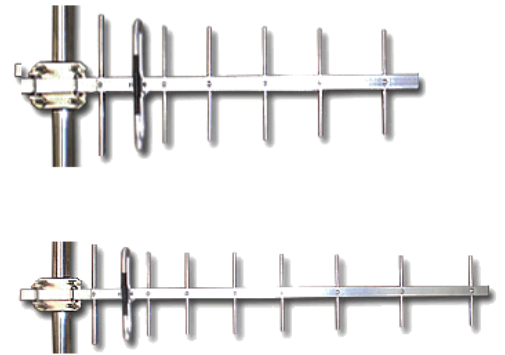
Each of our Yagi antenna is individually tested before leaving our manufacturing facility and is covered by a two year limited warranty term

## 300/400MHz UHF Yagi antennas 406-512 MHz, brite finish

Model	Frequency	Gain	Beam width	Length
ZDADJ350-11YG	350~360MHz	11dBi	H:40° V:44°	1500mm
ZDADJ315-11YG	310~320MHz	11dBi	H:40° V:44°	1600mm
ZDADJ400-7YG	406~430MHz	7dBi	H:80° V:76°	690mm
ZDADJ400-9YG	406~430MHz	9dBi	H:65° V:56°	800mm
ZDADJ400-11YG	406~430MHz	11dBi	H:45° V:38°	1150mm
ZDADJ400-13YG	406~430MHz	13dBi	H:34° V:30°	1480mm
ZDADJ430-7YG	430~450MHz	7dBi	H:80° V:76°	410mm
ZDADJ430-9YG	430~450MHz	9dBi	H:65° V:56°	700mm
ZDADJ430-11YG	430~450MHz	11dBi	H:45° V:38°	1000mm
ZDADJ430-13YG	430~450MHz	13dBi	H:34° V:30°	1400mm
ZDADJ450-8YG	450~470MHz	8dBi	H:80° V:76°	450mm
ZDADJ450-10YG	450~470MHz	10dBi	H:65° V:56°	820mm
ZDADJ450-12YG	450~470MHz	12dBi	H:45° V:38°	1200mm
ZDADJ450-14YG	450~470MHz	14dBi	H:34° V:30°	1500mm
ZDADJ470-10YG	470~490MHz	10dBi	H:65° V:56°	800mm
ZDADJ490-10YG	490~512MHz	10dBi	H:65° V:56°	750mm
ZDADJ433-8YG	428~438MHz	8dBi	H:80° V:76°	600mm
ZDADJ433-10YG	428~438MHz	10dBi	H:65° V:56°	840mm
ZDADJ433-12YG	428~438MHz	12dBi	H:45° V:38°	1250mm
ZDADJ433-14YG	428~438MHz	14dBi	H:34° V:30°	1550mm

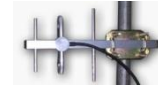
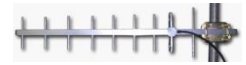
- Connector : N-Female or customized
- VSWr : <1.5:1 at resonance
- Impedance : 50 ohms
- DC Grounded
- F TO B: 18dB
- Wind Survival: 125 M.P.H.
- Polarization: Vertical or Horizontal Polarization.

- all weather Anodized Aluminum construction
- Can be installed for either vertical or horizontal polarization
- Solid Aluminum elements
- Heavy duty mounting hardware



## 700MHz Yagi antennas 698-806MHz, brite finish

Model	Frequency	Gain	Beam width	Element	Length
ZDADJ700-16YG	698~755MHz	16dBi	H:34° V:28°	14	1760mm
ZDADJ700-14YG	698~755MHz	14dBi	H:42° V:35°	10	1200mm
ZDADJ700-10YG	698~755MHz	10dBi	H:50° V:40°	5	460mm
ZDADJ750-16YG	746~806MHz	16dBi	H:34° V:28°	14	1760mm
ZDADJ750-14YG	746~806MHz	14dBi	H:42° V:35°	10	1200mm
ZDADJ750-10YG	746~806MHz	10dBi	H:50° V:40°	5	460mm
ZDADJ790-10YG	698-790 MHz	10dBi	H:54° V:40	6	800mm
ZDADJ790-14YG	698-790 MHz	14dBi	H:45° V:32°	10	1180mm


**902-928 MHz Yagi Antennas 902-928 MHz, brite finsh**

Model Number	Frequency	Gain	Beam width	Element	Length
ZDADJ928-17YG	902~928MHz	17dBi	H:32° V:25°	17	1840mm
ZDADJ928-14YG	902~928MHz	14dBi	H:38° V:32°	9	900mm
ZDADJ928-11YG	902~928MHz	11dBi	H:40° V:36°	5	450mm
ZDADJ928-8YG	902~928MHz	8dBi	H:45° V:40°	3	300mm

**850 MHz Yagi Antennas 806-896MHz, brite finsh**

Model Number	Frequency	Gain	Beam width	Element	Length
ZDADJ800-13YG	806-896MHz	13dBi	H:48° V:38°	10	1160mm
ZDADJ800-10YG	806-896MHz	10dBi	H:52° V:45°	6	660mm
ZDADJ800-8YG	806-896MHz	8dBi	H:78° V:68°	3	350mm

**800/900 MHz Yagi Antennas 824-960MHz, brite finsh**

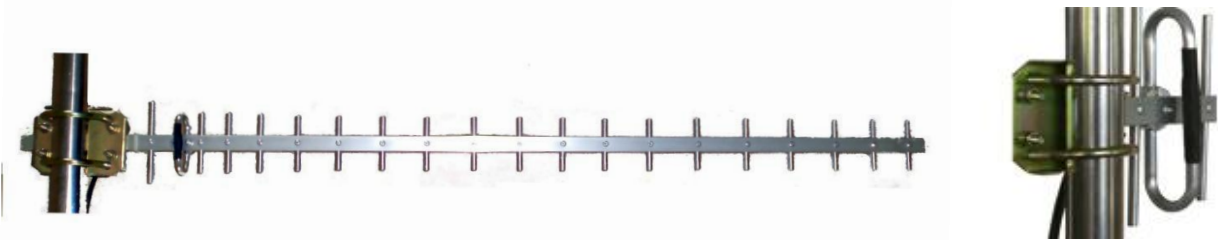
Model Number	Frequency	Gain	Beam width	Element	Length
ZDADJ900-14YG	824-960MHz	14dBi	H:48° V:38°	14	1180mm
ZDADJ900-12YG	824-960MHz	12dBi	H:52° V:45°	10	800mm
ZDADJ900-8YG	824-960MHz	8dBi	H:78° V:68°	5	550mm
ZDADJ900-6YG	824-960MHz	6dBi	H:90° V:82°	3	400mm

**1090 MHz Yagi Antennas 1070-1110MHz, brite finsh**

Model Number	Frequency	Gain	Beam width	Element	Length
ZDADJ1090-14YG	1070-1110MHz	14.5dBi	H:34° V:31°	11	1070mm
ZDADJ1090-16YG	1070-1110MHz	16dBi	H:26° V:22°	16	1600mm

**1800/1900MHz Yagi antennas ,1700-2000 MHz , brite finish**

Model Number	Frequency	Gain	Beam width	Element	size
ZDADJ1921-17YG	1920~2170MHz	17dBi	H:28° V:24°	17	1100mm
ZDADJ1800-10YG	1710~1880MHz	10dBi	H:45° V:38°	6	400mm
ZDADJ1800-12YG	1710~1880MHz	12dBi	H:45° V:38°	12	700mm
ZDADJ1800-14YG	1710~1880MHz	14dBi	H:42° V:35°	14	800mm
ZDADJ1800-17YG	1710~1880MHz	17dBi	H:35° V:28°	17	1130mm
ZDADJ1900-10YG	1850~1990MHz	10dBi	H:34° V:30°	6	370mm
ZDADJ1900-12YG	1850~1990MHz	12dBi	H:40° V:36°	12	600mm
ZDADJ1900-14YG	1850~1990MHz	14dBi	H:40° V:43°	14	700mm
ZDADJ1900-17YG	1850~1990MHz	17dBi	H:35° V:28°	17	1000mm
ZDADJ1700-10YG	1710~1990MHz	10dBi	H:34° V:30°		


**2.4GHz Yagi antennas , 2400-2500MHz, brite finish**

Model Number	Frequency	Gain	Beam width	Element	size
ZDADJ2400-10YG	2400~2500MHz	10dBi	H:58° V:50°	7	400mm
ZDADJ2400-12YG	2400~2500MHz	12dBi	H:45° V:40°	9	480mm
ZDADJ2400-14YG	2400~2500MHz	14dBi	H:38° V:30°	12	580mm
ZDADJ2400-18YG	2400~2500MHz	18dBi	H:32° V:25°	20	870mm

**2.6GHz Yagi antennas 2500-2700MHz, brite finish**

Model Number	Frequency	Gain	Beam width	Element	size
ZDADJ2600-10YG	2500~2700MHz	10dBi	H:58° V:50°	7	390mm
ZDADJ2600-12YG	2500~2700MHz	12dBi	H:45° V:40°	9	460mm
ZDADJ2600-14YG	2500~2700MHz	14dBi	H:38° V:30°	12	600mm

■ ■ ■ **Heavy duty Yagi Antenna** series offered by ZDA Communications is constructed of 6061-T6 Aluminum for outstanding service life. Individual elements and dipole are welded with robot to the main boom for permanent attachment. These antennas have high gain and good front to back performance to minimize external interference. They can be mounted in vertical or horizontal polarization, provides the users with black powder coated aluminum boom, solid elements, Heavy duty mounting hardware with all-weather operation. The most important to end users, these Yagi directional antennas from ZDA are offered at affordable cost-effective price.

■ ■ ■ Each of our Yagi antenna is individually tested before leaving our manufacturing facility and is covered by a two year limited warranty term



### Heavy duty 300/400MHz UHF Yagi antennas 406-512 MHz , black finish

Model	Frequency	Gain	Beam width	Element	size
ZDAYG4007	406~430MHz	7dBi	H:80° V:76°	5	690mm
ZDAYG4009	406~430MHz	9dBi	H:65° V:56°	7	800mm
ZDAYG40011	406~430MHz	11dBi	H:45° V:38°	9	1150mm
ZDAYG40013	406~430MHz	13dBi	H:34° V:30°	12	1480mm
ZDAYG4307	430~450MHz	7dBi	H:80° V:76°	5	410mm
ZDAYG4309	430~450MHz	9dBi	H:65° V:56°	7	700mm
ZDAYG43011	430~450MHz	11dBi	H:45° V:38°	9	1000mm
ZDAYG43013	430~450MHz	13dBi	H:34° V:30°	12	1400mm
ZDAYG4508	450~470MHz	8dBi	H:80° V:76°	5	450mm
ZDAYG45010	450~470MHz	10dBi	H:65° V:56°	7	820mm
ZDAYG45012	450~470MHz	12dBi	H:45° V:38°	9	1200mm
ZDAYG45014	450~470MHz	14dBi	H:34° V:30°	12	1500mm
ZDAYG47010	470~490MHz	10dBi	H:65° V:56°	7	800mm
ZDAYG49010	490~512MHz	10dBi	H:65° V:56°	7	750mm
ZDAYG4338	428~438MHz	8dBi	H:80° V:76°	5	600mm
ZDAYG43310	428~438MHz	10dBi	H:65° V:56°	7	840mm
ZDAYG43312	428~438MHz	12dBi	H:45° V:38°	9	1250mm
ZDAYG43314	428~438MHz	14dBi	H:34° V:30°	12	1550mm



### Heavy duty 902-928 MHz Yagi Antennas 902-928, black finish

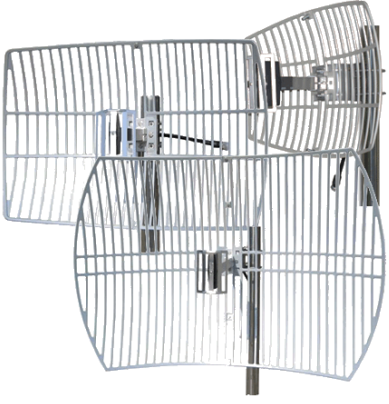
Model Number	Frequency	Gain	Beam width	Element	Length
ZDAYG92817	902~928MHz	17dBi	H:32° V:25°	17	1840mm
ZDAYG92814	902~928MHz	14dBi	H:38° V:32°	9	900mm
ZDAYG92811	902~928MHz	11dBi	H:40° V:36°	5	450mm
ZDAYG9288	902~928MHz	8dBi	H:45° V:40°	3	300mm



■ ■ Grid Parabolic Antennas, Die-cast applications include point to point systems, point to multi-point and wireless bridges for the 700/900MHz & 2.4/3.5/3.65/5GHz bands. Its compact design makes it very easy to install in most applications. Die-cast grid antenna is more cost-effective

### 700MHz Grid antennas, 698-755 MHz, die-cast

Model	Frequency	Gain	Beam width	size
ZDAGP700-10-30	698~755MHz	10dBi	H:30° V:25°	400x300mm
ZDAGP700-12-22	698~755MHz	12dBi	H:22° V:18°	600x400mm
ZDAGP700-15-17	698~755MHz	15dBi	H:17° V:13°	900X600mm/Two piece
ZDAGP700-16-19	698~755MHz	16dBi	H:19° V:19°	Φ1200mm/four piece
ZDAGP750-10-30	746~806MHz	10dBi	H:30° V:25°	400x300mm
ZDAGP750-12-22	746~806MHz	12dBi	H:22° V:18°	600x400mm
ZDAGP750-15-17	746~806MHz	15dBi	H:17° V:13°	900X600mm/Two piece
ZDAGP750-16-19	746~806MHz	16dBi	H:19° V:19°	Φ1200mm/four piece



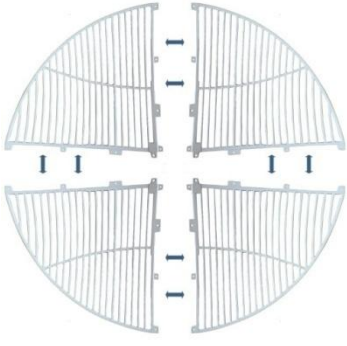
### 800MHz and 900MHz Grid antennas, 806-960MHz, die-cast

Model Number	Frequency	Gain	Beam width	size
ZDAGP900-10-32	870~960MHz	10dBi	H:32° V:28°	400X300mm
ZDAGP900-12-28	870~960MHz	12dBi	H:28° V:24°	400X600mm
ZDAGP900-15-21	870~960MHz	15dBi	H:21° V:16°	900X600mm/Two piece
ZDAGP900-17-15	870~960MHz	17dBi	H:15° V:15°	Φ1200mm/four piece
ZDAGP800-10-32	806~896MHz	10dBi	H:32° V:28°	400X300mm
ZDAGP800-12-28	806~896MHz	12dBi	H:28° V:24°	400X600mm
ZDAGP800-15-21	806~896MHz	15dBi	H:21° V:16°	900X600mm/Two piece
ZDAGP800-17-15	806~896MHz	18dBi	H:15° V:15°	Φ1200mm/four piece



### 1800/1900MHz Grid Parabolic antennas, die-cast

Model Number	Frequency	Gain	Beam width	size
ZDAGP1800-15-25	1710~1880MHz	15dBi	H:25° V:20°	0.4x 0.3m
ZDAGP1800-18-20	1710~1880MHz	18dBi	H:20° V:18°	0.6x 0.4 m
ZDAGP1800-20-12	1710~1880MHz	20dBi	H:15° V:12°	0.9x 0.6 m/two piece
ZDAGP1800-24-10	1710~1880MHz	23.5dBi	H:10° V:10°	Φ1.2m/four piece
ZDAGP1900-15-25	1850~1990MHz	15dBi	H:25° V:20°	0.4x 0.3m
ZDAGP1900-18-20	1850~1990MHz	18dBi	H:20° V:18°	0.6x 0.4 m
ZDAGP1900-20-15	1850~1990MHz	20dBi	H:15° V:12°	0.9x 0.6 m/two piece
ZDAGP1900-24-9	1850~1990MHz	24dBi	H:9° V:9°	Φ1.2m/four piece



### 1710/2100MHz Grid Parabolic antennas, die-cast

Model Number	Frequency	Gain	Beam width	size
ZDAGP1721-19-15	1710-2170MHz	19dBi	H:15° V:12°	0.9x 0.6 m/two piece
ZDAGP1721-23-9	1710-2170MHz	23dBi	H:9° V:9°	Φ1.2m/four piece

### 2.4/2.6GHz Grid Parabolic dish antennas, die-cast

Model	Frequency	Gain	Beam width	size
ZDAGP2400-15-21	2400~2500MHz	15dBi	H:21° V:16°	0.3 x 0.4 m
ZDAGP2400-19-16	2400~2500MHz	19dBi	H:16° V:12°	0.6 x 0.4 m
ZDAGP2400-24-08	2400~2500MHz	24dBi	H:8° V:6°	0.9x 0.6 m/two piece
ZDAGP2400-27-08	2400~2500MHz	27dBi	H:8° V:8°	Φ1.2m/four piece
ZDAGP2600-15-21	2500~2700MHz	15dBi	H:21° V:16°	0.3 x 0.4 m
ZDAGP2600-19-16	2500~2700MHz	19dBi	H:16° V:12°	0.6 x 0.4 m
ZDAGP2600-24-8	2500~2700MHz	24dBi	H:8° V:6°	0.9x 0.6 m/two piece
ZDAGP2600-26-8	2500~2700MHz	27dBi	H:8° V:8°	Φ1.2m/four piece



### 3.5GHz Grid Parabolic dish antennas, die-cast

Model	Frequency	Gain	Beam Width	size
ZDAGP3500-19-16	3400-3600MHz	19 dBi	H:16° V:13°	300x400mm
ZDAGP3500-23-12	3400-3600MHz	23 dBi	H:12° V:8°	400x600mm
ZDAGP3500-27-7	3400-3600MHz	27 dBi	H:7° V:6°	600x900mm

### 3.65 GHz Grid Parabolic Antennas 3600-3700 MHz, die-cast

Model	Frequency	Gain	Beam width	size
ZDAGP3600-19-16	3600-3700MHz	19 dBi	H:16° V:13°	300x400mm
ZDAGP3600-23-12	3600-3700MHz	23 dBi	H:12° V:8°	400x600mm
ZDAGP3600-27-7	3600-3700MHz	27 dBi	H:7° V:6°	600x900mm

### 5.8GHz Grid Parabolic antennas , die-cast

Model Number	Frequency range	Gain (dBi)	Beam width	size
ZDAGP5800-30-6	5725~5850MHz	30	H:6° V:4°	0.9 X0.6m
ZDAGP5800-27-9	5725~5850MHz	27	H:9° V:6°	0.6X0.4 m

### 5GHz Wide band Grid Parabolic antennas , die-cast

Model Number	Frequency range	Gain	Beam width	size
ZDAGP5159-27-9	5150-5850MHz	27dBi	H:9° V:6°	0.6X0.4 m
ZDAGP5159-30-6	5150-5850MHz	30dBi	H:6° V:4°	0.9x 0.6 m/two piece
ZDAGP5159-34-5	5150-5850MHz	34dBi	H:5° V:5°	Φ1.2m/four piece



Directional applications include point to point systems, point to multi-point and wireless bridges for the 700/900MHz & 2.4/3.5/3.65/5.8GHz wireless service providers. Its compact design makes it very easy to install in most applications.

**300/400MHz UHF Grid antennas, 350-512MHz, manual welding**

Model	Frequency	Gain	Beam width	size
ZDAGP350C-15-8	350~380MHz	15dBi	8°	Dia1.8m
ZDAGP350C-18-6	350~380MHz	18dBi	6°	dia2.4 m
ZDAGP380C-15-8	380~400MHz	15dBi	8°	Dia1.8m
ZDAGP380C-18-6	380~400MHz	18dBi	6°	dia2.4 m
ZDAGP400C-12-18	406~430MHz	12dBi	14°	Dia1.2m
ZDAGP400C-14-14	406~430MHz	14dBi	10°	Dia1.5m
ZDAGP400C-16-10	406~430MHz	16dBi	8°	Dia1.8m
ZDAGP400C-18-8	406~430MHz	18dBi	6°	dia2.4 m
ZDAGP430C-12-18	430~450MHz	12dBi	14°	Dia1.2m
ZDAGP430C-14-14	430~450MHz	14dBi	10°	Dia1.5m
ZDAGP430C-16-10	430~450MHz	16dBi	8°	Dia1.8m
ZDAGP430C-18-8	430~450MHz	18dBi	6°	dia2.4 m
ZDAGP450C-12-18	450~470MHz	12dBi	14°	Dia1.2m
ZDAGP450C-14-14	450~470MHz	14dBi	10°	Dia1.5m
ZDAGP450C-16-10	450~470MHz	16dBi	8°	Dia1.8m
ZDAGP450C-18-8	450~470MHz	18dBi	6°	dia2.4 m
ZDAGP470C-12-18	470~490MHz	12dBi	14°	Dia1.2m
ZDAGP470C-14-14	470~490MHz	14dBi	10°	Dia1.5m
ZDAGP470C-16-10	470~490MHz	16dBi	8°	Dia1.8m
ZDAGP470C-18-8	470~490MHz	18dBi	6°	dia2.4 m



**700MHz Grid antennas 698-806 MHz, manual welding**

Model	Frequency	Gain	Beam width	size
ZDAGP700C-15-14	698~755MHz	15dBi	14°	Dia1.2m
ZDAGP700C-17-10	698~755MHz	17dBi	10°	Dia1.5m
ZDAGP700C-19-8	698~755MHz	19dBi	8°	Dia1.8m
ZDAGP700C-21-6	698~755MHz	21dBi	6°	dia2.4 m
ZDAGP750C-15-14	746~806MHz	15dBi	14°	Dia1.2m
ZDAGP750C-17-10	746~806MHz	17dBi	10°	Dia1.5m
ZDAGP750C-19-8	746~806MHz	19dBi	8°	Dia1.8m
ZDAGP750C-21-6	746~806MHz	21dBi	6°	dia2.4 m

■ ■ ■ Directional applications include point to point systems, point to multi-point and wireless bridges for the 700/900MHz & 2.4/3.5/3.65/5.8GHz wireless service providers. Its compact design makes it very easy to install in most applications.

**800MHz Grid antennas 806-896MHz, manual welding**

Model	Frequency	Gain	Beam width	size
ZDAGP800C-17-10	806-896MHz	17dBi	10°	Dia1.2m
ZDAGP800C-19-8	806-896MHz	19dBi	8°	Dia1.5m
ZDAGP800C-21-7	806-896MHz	21dBi	7°	Dia1.8m
ZDAGP800C-23-6	806-896MHz	23dBi	6°	dia2.4 m

**900MHz Grid antennas 870-960MHz, manual welding**

Model	Frequency	Gain	Beam width	size
ZDAGP900C-17-10	870-960MHz	17dBi	10°	Dia1.2m
ZDAGP900C-19-8	870-960MHz	19dBi	8°	Dia1.5m
ZDAGP900C-21-7	870-960MHz	21dBi	7°	Dia1.8m
ZDAGP900C-25-6	870-960MHz	25dBi	6°	dia2.4 m

**1800MHz Grid antennas 1710-1880MHz, manual welding**

Model	Frequency	Gain	Beam width	size
ZDAGP1800C-27-9	1710-1880MHz	27dBi	9°	Dia1.2m
ZDAGP1800C-29-8	1710-1880MHz	29dBi	8°	Dia1.5m
ZDAGP1800C-31-7	1710-1880MHz	31dBi	7°	Dia1.8m
ZDAGP1800C-35-5	1710-1880MHz	35dBi	5°	dia2.4 m

**1900MHz Grid antennas 1850-1990MHz, manual welding**

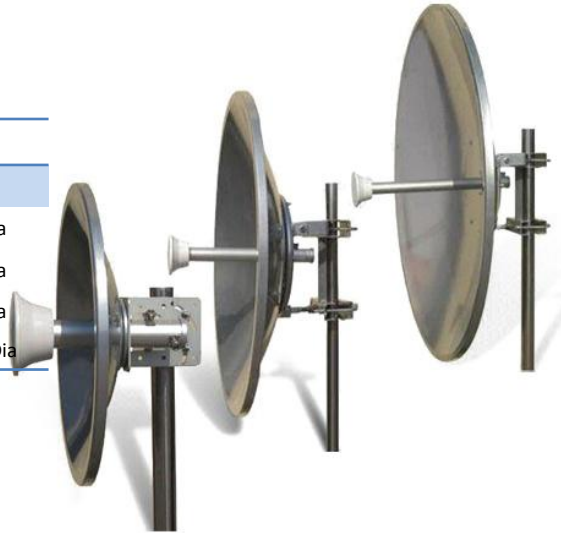
Model	Frequency	Gain	Beam width	size
ZDAGP1900C-27-9	1850-1990MHz	27dBi	9°	Dia1.2m
ZDAGP1900C-29-8	1850-1990MHz	29dBi	8°	Dia1.5m
ZDAGP1900C-31-7	1850-1990MHz	31dBi	7°	Dia1.8m
ZDAGP1900C-35-5	1850-1990MHz	35dBi	5°	dia2.4 m

**2400MHz Grid antennas 2400-2500MHz, manual welding**

Model	Frequency	Gain	Beam width	size
ZDAGP2400C-27-7	2400-2500MHz	27dBi	7°	Dia1.2m
ZDAGP2400C-30-5	2400-2500MHz	30dBi	5°	Dia1.8m

**5 GHz Wide band Solid Parabolic dish Antennas**

model	Frequency	gain	Beam width	size
ZDASP5159-24-9	5150-5850MHz	24dBi	9 °	Φ400mm Dia
ZDASP5159-29-6	5150-5850MHz	29dBi	6 °	Φ600mm Dia
ZDASP5159-32-4	5150-5850MHz	32dBi	4 °	Φ900mm Dia
ZDASP5159-35-4	5150-5850MHz	35dBi	3 °	Φ1200mm Dia


**5 GHz Dual Polarization MIMO Solid Parabolic dish Antennas**

model	Frequency	gain	Beam width	size
ZDASP5159-34-3D	5150-5850MHz	34 dBi	9 °	dia1.2m
ZDASP5159-32-4D	5150-5850MHz	32 dBi	6 °	Dia0.9m
ZDASP5159-29-6D	5150-5850MHz	29 dBi	4 °	Dia0.6m
ZDASP5159-24-9D	5150-5850MHz	24 dBi	3 °	Dia0.4m

■ ■ ■ **Omni-directional fiberglass antennas are designed for, VHF, UHF, cellular /PCS/LTE, Non Line of Sight and mobile applications where high gains and wide coverage are desired. A white fiberglass radome provides durability, aesthetics and long service life.**

**VHF Omni directional antennas, 140-225MHz**

Model	Frequency	Gain	size-cm	Input Maximum	V-Beam Width
ZDAQJ140-2	140-144 MHz	2dBi	∅ 2.5x162	150w	75°
ZDAQJ140-5	140-144 MHz	5dBi	∅ 4X272	150w	33°
ZDAQJ144-2	144-148 MHz	2dBi	∅ 2.5x162	150w	75°
ZDAQJ144-5	144-148 MHz	5dBi	∅ 4X272	150w	33°
ZDAQJ148-2	148-152 MHz	2dBi	∅ 2.5x162	200w	75°
ZDAQJ148-5	148-152 MHz	5dBi	∅ 4X272	200w	33°
ZDAQJ152-2	152-156 MHz	2dBi	∅ 2.5x162	200w	75°
ZDAQJ152-5	152-156 MHz	5dBi	∅ 4X272	200w	33°
ZDAQJ156-2	156-162 MHz	2dBi	∅ 2.5x162	200w	75°
ZDAQJ156-5	156-162 MHz	5dBi	∅ 4X272	200w	33°
ZDAQJ162-2	162-168 MHz	2dBi	∅ 2.5x162	200w	75°
ZDAQJ162-5	162-168 MHz	5dBi	∅ 4X272	200w	33°
ZDAQJ168-5	168-174 MHz	5dBi	∅ 4X272	200w	33°
ZDAQJ200-2	200-210 MHz	2dBi	∅ 2.5x100	200w	75°
ZDAQJ200-5	200-210 MHz	5dBi	∅ 4X180	200w	33°
ZDAQJ210-2	210-220 MHz	2dBi	∅ 2.5x100	200w	75°
ZDAQJ210-5	210-220 MHz	5dBi	∅ 4X180	200w	33°
ZDAQJ220-2	215-225 MHz	2dBi	∅ 2.5x100	200w	75°
ZDAQJ220-5	215-225 MHz	5dBi	∅ 4X170	200w	33°
ZDAQJ225-2	220-225 MHz	2dBi	∅ 2.5x100	200w	75°
ZDAQJ225-5	220-225 MHz	5dBi	∅ 4x170	200w	33°



■ ■ ■ Omni directional antennas are developed and refined through continuous process improvements. With our dedication for excellence, you can be confident that you'll receive first-rate quality wireless telecommunication products and services to consistently meet your needs. Use the Product Resource tool to find the most current specifications and patterns, related products and documents, and more. This system allows you to view, customize, print, and email product information. Visit often—it's your source for ZDA product information

**UHF Omni directional antennas, 300-512MHz**

Model	Frequency	Gain	size-cm	Input Maximum	Beam Width
ZDAQJ300-5	300-320 MHz	5dBi	∅ 4x210	200w	V:40°
ZDAQJ317-5	317-338 MHz	5dBi	∅ 4x200	200w	V:40°
ZDAQJ345-5	345-365 MHz	5dBi	∅ 4x190	200w	V:40°
ZDAQJ350-5	350-360 MHz	5dBi	∅ 4x190	200w	V:32°
ZDAQJ360-5	360-380 MHz	5dBi	∅ 4x190	200w	V:40°
ZDAQJ370-5	370-390 MHz	5dBi	∅ 4x180	200w	V:40°
ZDAQJ380-5	380-400 MHz	5dBi	∅ 4x180	200w	V:40°
ZDAQJ400-2	406-430 MHz	2dBi	∅ 2.5x56	200w	V:70°
ZDAQJ400-5	406-430 MHz	5dBi	∅ 2.5x150	200w	V:32°
ZDAQJ400-7	406-430 MHz	7dBi	∅ 4X250	200w	V:28°
ZDAQJ430-2	430-450 MHz	2dBi	∅ 2.5x56	200w	V:70°
ZDAQJ430-5	430-450 MHz	5dBi	∅ 2.5x150	200w	V:32°
ZDAQJ430-7	430-450 MHz	7dBi	∅ 4X240	200w	V:28°
ZDAQJ450-2	450-470 MHz	2dBi	∅ 2.5x56	200w	V:70°
ZDAQJ450-5	450-470 MHz	5dBi	∅ 2.5x150	200w	V:32°
ZDAQJ450-7	450-470 MHz	7dBi	∅ 4X200	200w	V:28°
ZDAQJ450-9	450-460 MHz	9dBi	∅ 4x298	200w	V:14°
ZDAQJ460-9	460-470 MHz	9dBi	∅ 4x298	200w	V:14°
ZDAQJ470-2	470-490 MHz	2dBi	∅ 2.5x56	200w	V:70°
ZDAQJ470-5	470-490 MHz	5dBi	∅ 2.5x150	200w	V:32°
ZDAQJ470-7	470-490 MHz	7dBi	∅ 4X200	200w	V:28°
ZDAQJ490-2	490-512 MHz	2dBi	∅ 2.5x50	200w	V:70°
ZDAQJ490-5	490-512 MHz	5dBi	∅ 2.5x140	200w	V:32°
ZDAQJ490-7	490-512 MHz	7dBi	∅ 4X190	200w	V:28°



Directional applications include point to point systems, point to multi-point and wireless bridges for the 700/900MHz & 2.4/3.5/3.65/5.8GHz wireless service providers. Its compact design makes it very easy to install in most applications.

### 700MHz Omni directional antennas

Model	Frequency	Gain	Beam width	size-mm
ZDAQJ700-6	698~746MHz	6dBi	30°	∅ 25x1100
ZDAQJ700-8	698~746MHz	8dBi	25°	∅ 25x1800
ZDAQJ700-10	698~746MHz	10dBi	16°	∅ 41x2600
ZDAQJ750-6	746~806MHz	6dBi	30°	∅ 25x1050
ZDAQJ750-8	746~806MHz	8dBi	25°	∅ 25x1800
ZDAQJ750-10	746~806MHz	10dBi	16°	∅ 41x2450



### 800 / 900MHz Omni-directional antennas

Model	Frequency	Gain	Beam width	Size-mm
ZDAQJ800-6	806~896MHz	6dBi	30°	∅ 25x1200mm
ZDAQJ800-8	806~896MHz	8dBi	25°	∅ 25x1650mm
ZDAQJ800-10	806~896MHz	10dBi	16°	∅ 41x2350mm
ZDAQJ900-6	870~960MHz	6dBi	30°	∅ 25x1050mm
ZDAQJ900-8	870~960MHz	8dBi	25°	∅ 25x1500mm
ZDAQJ900-10	870~960MHz	10dBi	16°	∅ 41x2250mm

### 800 /1900MHz Dual band Omni-directional antennas

Model Number	Frequency range (MHz)	Gain	Beam width	Size-mm
ZDAQJ8001900-5	806~924/1850~1990	5dBi	30°	dia25x550
ZDAQJ8001900-8	806~924/1850~1990	8dBi	12°	dia40X1200
ZDAQJ8001900-10	806~924/1850~1990	10dBi	10°	dia40X1500

### 1710 /2100MHz Dual band Omni-directional antennas

Model Number	Frequency range (MHz)	Gain	Beam width	Size-cm
ZDAQJ1821-5	1710~1880/2100~2155	5dBi	45°	63cm
ZDAQJ1821-9	1710~1880/2100~2155	9dBi	20°	100cm

**1090MHz Omni-directional antennas**

Model Number	Frequency	Gain	Vertical	Beam width	size
ZDAQJ1090-5	1070-1110MHz	5dBi	35 °		∅ 25x950 mm
ZDAQJ1090-8	1850-1990MHz	8dBi	15 °		∅ 25x1500mm

**1800/1900MHz Omni-directional antennas**

Model Number	Frequency	Gain	Vertical	Beam width	size
ZDAQJ1900-6	1850-1990MHz	6dBi	35 °		∅ 25x580 mm
ZDAQJ1900-8	1850-1990MHz	8dBi	30°		∅ 25x900mm
ZDAQJ1900-10	1850-1990MHz	10dBi	22°		∅ 25x1250mm

**2.4GHz Omni-directional antennas**

Model Number	Frequency range	Gain	Vertical	Beam width	size
ZDAQJ2400-6	2400-2500MHz	6dBi	28°		dia25x550mm
ZDAQJ2400-8	2400-2500MHz	8dBi	22°		dia25x800mm
ZDAQJ2400-10	2400-2500MHz	10dBi	18°		dia25x1100mm
ZDAQJ2400-12	2400-2500MHz	12dBi	10°		dia25x1300mm

**2.6GHz Omni-directional antennas**

Model Number	Frequency range	Gain	size	Vertical	Beam width	size
ZDAQJ2600-6	2500-2700MHz	6dBi	21.65in.	28°		dia25x510mm
ZDAQJ2600-8	2500-2700MHz	8dBi	31.5in.	22°		dia25x650mm
ZDAQJ2600-10	2500-2700MHz	10dBi	43.3in.	18°		dia25x1000mm
ZDAQJ2600-12	2500-2700MHz	12dBi	51.2in.	10°		dia25x1300mm



■ ■ ■
**Omni-directional fiberglass antennas are designed for multipoint, cellular band, Non Line of Sight and mobile applications where high gains and wide coverage are desired. A white fiberglass radome provides durability, aesthetics and long service life.**

**3.5/3.65GHz Omni-Directional Antennas 3400-3700 MHz**

Model Number	Frequency range	Gain	Size	Beam width	size
ZDAQJ3500-8	3400-3600MHz	8dBi	∅ 25X550mm	v:24°	∅ 25X800mm
ZDAQJ3500-10	3400-3600MHz	10dBi	∅ 25X650mm	v:18°	∅ 25X1000mm
ZDAQJ3600-8	3600-3700MHz	8dBi	∅ 25X550mm	v:24°	∅ 25X800mm
ZDAQJ3600-10	3600-3700MHz	10dBi	∅ 25X650mm	V:18°	∅ 25X1000mm

**5GHz antennas Omni-directional antennas**

Model Number	Frequency range	Gain	Beam width	size
ZDAQJ5200-8	5150-5350 MHz	6dBi	v:14°	∅ 25X550 mm
ZDAQJ5200-10	5150-5350 MHz	10dBi	v:10°	∅ 25X700 mm
ZDAQJ5200-12	5150-5350 MHz	12dBi	v:8°	∅ 25X800 mm
ZDAQJ5400-8	5470-5850 MHz	6dBi	v:14°	∅ 25X550 mm
ZDAQJ5400-10	5470-5850 MHz	10dBi	v:10°	∅ 25X700 mm
ZDAQJ5400-12	5470-5850 MHz	12dBi	v:8°	∅ 25X800 mm
ZDAQJ5800-8	5725-5850 MHz	6dBi	v:14°	∅ 25X550 mm
ZDAQJ5800-10	5725-5850 MHz	10dBi	v:10°	∅ 25X700 mm
ZDAQJ5800-12	5725-5850 MHz	12dBi	v:8°	∅ 25X800 mm
ZDAQJ5159-8	5150-5850 MHz	8dBi	v:16°	∅ 25X600 mm





■ ■ ■ Dual Polarization omnidirectional antenna designed for the 2.4GHz & 5GHz WiFi band. This omni antenna is ideally suited for IEEE 802.11b, 802.11g and 802.11n wireless LANs, Bluetooth and other multipoint applications wherever coverage is desired.

### 2.4GHz omni dual pol MIMO antenna series

Model	Frequency	Gain	Beam width	size	VSWR	Connector	Polarization
ZDAQJ2400-8x3	2400-2500MHz	12dBi	H:360 V:8	Φ145×750mm	≤1.5	3 SMA Female or N Female	Vertical
ZDAQJ2400-6x3	2400-2500MHz	6dBi	H:360 V:25	Φ145×600mm	≤1.5	3 SMA Female or N Female	Vertical
ZDAQJ2400-11D	2300-2700MHz	11dBi	H:360 V:12	Φ800×520mm	≤1.5	N Female	Vertical

### 5GHz omnidirectional dual pol MIMO Antenna

Model	Frequency	Gain	Beam width	size	VSWR	Connector	Polarization
ZDAQJ5159-8x3	5150-5850MHz	8dBi	H:360 V:17	Φ145×300mm	≤1.5	3 SMA Female or N Female	Vertical

### 2.4GHz & 5GHz dual pol Dualband omnidirectional MIMO Antenna

Model	Frequency	Gain	Beam width	size	VSWR	Connector	Polarization
ZDAQJ2458-8x6	2400-2500MHz 5150-5850MHz	8dBi@5150-5850MHz 6dBi@2400-2500MHz	H:360 V:17 ° @5150-5850MHz 40° @2400-2500MHz	Φ145×300mm	≤1.5	6 SMA Female or N Female	Vertical



ZDAQJ2400-11D



■ ■ ■ The flat panel directional antennas by ZDA offer high gain in a thin low profile package. The antennas are constructed of a gray color UV resistant ABS plastic radome with a back-plate. The antenna can be used in horizontal or vertical polarization. The die cast aluminum bracket affords +/- 45 deg up or down tilt adjustment with a long service life. The antenna can be pole mounted. The antenna comes with a standard N female connector.

### 700MHz V-pol flat panel antenna series

Model	Frequency	Gain-dBi	Beam width	size
ZDAFP700-10-60	698-755MHz	10dBi	H:60° V:60°	370×370×37mm
ZDAFP750-10-60	746-806MHz	10dBi	H:60° V:60°	370×370×37mm



### 900MHz V-pol flat panel antenna series

Model	Frequency	Gain-dBi	Horizontal Beam width	size
ZDAFP928-8	902-928MHz	8dBi	90°	216×216×25mm
ZDAFP928-11	902-928MHz	11dBi	60°	306×306×25mm

### 2.4GHz V-pol Flat Panel antennas

Model	Frequency -MHz	Gain-dBi	Beam width	size
ZDAFP2400-16-30	2400~2500	16	30°	216x216x25mm
ZDAFP2400-17-25	2400~2500	17	25°	268×268×22mm
ZDAFP2400-18-20	2400~2500	18	20°	320x320x25mm
ZDAFP2400-21-15	2400~2500	21	15°	450x450x25mm

### 2.6GHz v-pol flat panel antenna series

Model	Frequency	Gain	Beam width	size
ZDAFP2600-16-30	2500-2700MHz	16dBi	H:30 V:30	216×216×25mm
ZDAFP2600-17-25	2500-2700MHz	17dBi	H:25 V:25	268×268×22mm
ZDAFP2600-18-20	2500-2700MHz	18dBi	H:20 V:20	306x306x25mm
ZDAFP2600-21-15	2500-2700MHz	21dBi	H:15 V:15	450x450x25mm

■ ■ ■ The flat panel directional antennas by ZDA offer high gain in a thin low profile package. The antennas are constructed of a gray color UV resistant ABS plastic radome with a back-plate. The antenna can be used in horizontal or vertical polarization. The die cast aluminum bracket affords +/- 45 deg up or down tilt adjustment with a long service life. The antenna can be pole mounted. The antenna comes with a standard N female connector.



### 5GHz V-Pol Flat Panel antennas

Model	Frequency	Gain	Beam width	size-mm
ZDAFP5158-19-16	5150-5900MHz	19dBi	16	165x165x25mm
ZDAFP5158-20-15	5150-5900MHz	20dBi	15	216×216×25mm
ZDAFP5158-21-14	5150-5900MHz	21dBi	12	268×268×25mm
ZDAFP5158-23-12	5150-5900MHz	23dBi	11	306×306×25mm
ZDAFP5158-27-9	5150-5900MHz	27dBi	9	450x450x25mm
ZDAFP5158-29-6	5150-5900MHz	29dBi	6	600x600x25mm

## MIMO Panel Antennas

### 700MHz Dual Polarization Flat Panel Antennas

Model	Frequency	Gain	Beam width	size
ZDAFP700-10-60D	698-755MHz	10dBi	H:60° V:60°	370×370×37mm
ZDAFP750-10-60D	746-806MHz	10dBi	H:60° V:60°	370×370×37mm

### 3.65GHz Dual Polarization Flat Panel Antennas 3500-3700 MHz

Model	Frequency	Gain	Beam width	size
ZDAFP3650-18-20D	3500-3700MHz	18dBi	H:22 V:20	270×270×25mm

### 2.5/2.6GHz Dual Polarization flat panel antenna series

Model	Frequency	Gain	Beam width	size
ZDAFP2500-14-90D	2400-2600MHz	14dBi	H:90 V:15	450×165×35mm
ZDAFP2500-15-60D	2400-2600MHz	15dBi	H:60 V:15	450×165×35mm
ZDAFP2600-14-90D	2500-2700MHz	14dBi	H:90 V:15	450×165×35mm
ZDAFP2600-15-60D	2500-2700MHz	15dBi	H:60 V:15	450×165×35mm

**2.4GHz Vertical & Horizontal Dual Polarization MiMO flat panel antenna series**

Model	Frequency	Gain	Beam width	size	VSWR	Connector	Polarization
ZDAFP2400-14-30D	2400-2500MHz	14dBi	H:30 V:30	216×216×25mm	≤1.5	2XN Female or customized	Vertical & Horizontal
ZDAFP2400-19-16D	2400-2500MHz	19dBi	H:16 V:16	370×370×36mm	≤1.5	2XN Female or customized	Vertical & Horizontal

**2.4GHz ±45° cross Polarization MiMO flat panel antenna series**

Model	Frequency	Gain	Beam width	size	VSWR	Connector	Polarization
ZDAFP2400-14-70xD	2400-2500MHz	14dBi	H:70 V:20	306×306×25mm	≤1.5	2XN Female or customized	±45°
ZDAFP2400-14-90xDx3	2400-2500MHz	14dBi	H:90 V:30	370×370×36mm	≤2	3XN Female or customized	±45° +Vertical
ZDAFP2400-15-60xDx3	2400-2500MHz	15dBi	H:60 V:15	370×370×36mm	≤2	3XN Female or customized	±45° +Vertical

**2.4GHz 2×Vertical+1×Horizontal Polarization MiMO flat panel antenna series**

Model	Frequency	Gain	Beam width	size	VSWR	Connector	Polarization
ZDAFP2400-10-90D×3	2400-2500MHz	10dBi	H:90 V:30	370×370×36mm	≤1.5	3XN Female or customized	2×Vertical+1×Horizontal
ZDAFP2400-12-60D×3	2400-2500MHz	12dBi	H:60 V:30	268×268×35mm	≤1.5	3XN Female or customized	2×Vertical+1×Horizontal
ZDAFP2400-12-90D×3	2400-2500MHz	12dBi	H:90 V:15	370×370×36mm	≤2	3XN Female or customized	2×Vertical+1×Horizontal
ZDAFP2400-15-60D×3	2400-2500MHz	15dBi	H:60 V:15	370×370×36mm	≤2	3XN Female or customized	2×Vertical+1×Horizontal

**5GHz Vertical & Horizontal Dual Polarization MiMO flat panel antenna series**

Model	Frequency	Gain	Beam width	size	VSWR	Connector	Polarization
ZDAFP5158-18-17D	5150-5850MHz	18dBi	H:17 V:17	216×216×25mm	≤1.5	2XN Female or customized	Vertical & Horizontal
ZDAFP5158-23-11D	5150-5850MHz	23dBi	H:11 V:11	370×370×36mm	≤2	2XN Female or customized	Vertical & Horizontal

**5GHz ±45° cross Polarization MiMO flat panel antenna series**

Model	Frequency	Gain	Beam width	size	VSWR	Connector	Polarization
ZDAFP5158-16-90xDx3	5150-5850MHz	16dBi	H:90 V:8	306×306×25mm	≤2	3XN Female or customized	±45° +Vertical
ZDAFP5158-18-60xDx3	5150-5850MHz	18dBi	H:60 V:8	370×370×36mm	≤2	3XN Female or customized	±45° +Vertical

**5GHz 2×Vertical+1×Horizontal Polarization MiMO flat panel antenna series**

Model	Frequency	Gain	Beam width	size	VSWR	Connector	Polarization
ZDAFP5158-15-90D×3	5150-5850MHz	15dBi	H:90 V:8	370×370×36mm	≤2	3XN Female or customized	2×Vertical+1×Horizontal
ZDAFP5158-17-60D×3	5150-5850MHz	17dBi	H:60 V:8	370×370×36mm	≤2	3XN Female or customized	2×Vertical+1×Horizontal

■ ■ ■ The ZDA® Sector Antennas combines a very high gain with a wide beam-width. The professional quality cell site antenna is designed primarily for wireless service providers.

## V-pol Sector Antennas

### 700MHz v-pol Sector antennas

Model	Frequency	Gain-dBi	Horizontal Beam width	Vertical
ZDADJ700-14-60	710~790MHz	14	60	14
ZDADJ700-13-90	710~790MHz	13	90	14
ZDADJ700-12-9-120	710~790MHz	12	120	14

### 800MHz&900MHz v-pol Sector antennas

Model Number	Frequency	Gain (dBi)	Horizontal Beam width	Vertical
ZDADJ800-12-120	806~896MHz	12	120	14
ZDADJ800-13-90	806~896MHz	13	90	14
ZDADJ800-14-60	806~896MHz	14	60	14
ZDADJ900-12-120	870~960MHz	12	120	14
ZDADJ900-13-90	870~960MHz	13	90	14
ZDADJ900-14-60	870~960MHz	14	60	14

### 2.4GHz V-pol Sector antennas

Model Number	Frequency range	Gain (dBi)	Horizontal Beam width	Vertical
ZDADJ2400-14-120	2400~2500MHz	13	120	14
ZDADJ2400-14-90	2400~2500MHz	14	90	14
ZDADJ2400-14-60	2400~2500MHz	15	60	14
ZDADJ2400-16-120	2400~2500MHz	16	120	8
ZDADJ2400-17-90	2400~2500MHz	17	90	8
ZDADJ2400-18-60	2400~2500MHz	18	60	8



■ ■ ■ The ZDA® Sector / Panel WLAN/WIMAX/WIFI Antennas combines a very high gain with a wide beam-width. The professional quality cell site antenna is designed primarily for wireless service providers.

### 2.6GHz V-pol Sector antennas

Model Number	Frequency range	Gain (dBi)	Horizontal	Vertical Beam width
ZDADJ2600-16-120	2500~2700MHz	16	120	8
ZDADJ2600-17-90	2500~2700MHz	17	90	8
ZDADJ2600-18-60	2500~2700MHz	18	60	8

### 1900MHz v-pol Sector antennas

Model Number	Frequency	Gain (dBi)	Horizontal	Vertical Beam width
ZDADJ1900-12-120	1850~1990MHz	12	120	14
ZDADJ1900-13-90	1850~1990MHz	13	90	14
ZDADJ1900-14-60	1850~1990MHz	14	60	14
ZDADJ1900-16-120	1850~1990MHz	16	120	8
ZDADJ1900-17-90	1850~1990MHz	17	90	8
ZDADJ1900-18-60	1850~1990MHz	18	60	8

### 3.5&3.65GHz Vpol Sector antennas

Model Number	Frequency range	Gain (dBi)	Horizontal Beam width	Vertical
ZDADJ3500-16-120	3300~3800MHz	16	120	8
ZDADJ3500-17-90	3300~3800MHz	17	90	8
ZDADJ3500-18-60	3300~3800MHz	18	60	8

### 5GHz antennas Vpol Sector antennas

Model Number	Frequency range (MHz)	Gain (dBi)	Horizontal Beam width(° )	Vertical
ZDADJ5159-15-120	5150~5850	16	120	8
ZDADJ5159-17-90	5150~5850	17	90	8
ZDADJ5159-18-60	5150~5850	15	60	8

## Dual Pol Sector MIMO Antennas

### 2.4GHz V&H Dual Pol MiMO Sector antenna series

Model	Frequency	Gain	Beam width	Radome	Connector	Polarization
ZDADJ2400-15-60D	2400-2500MHz	15dBi	H:60 V:15	ABS	2XN Female or customized	Vertical & Horizontal
ZDADJ2400-14-90D	2400-2500MHz	14dBi	H:90 V:15	ABS	2XN Female or customized	Vertical & Horizontal

### 2.4GHz $\pm 45^\circ$ X Pol MiMO Sector antenna series

Model	Frequency	Gain	Beam width	Radome	Connector	Polarization
ZDADJ2400-15-60XD	2400-2500MHz	15dBi	H:60 V:15	ABS	2XN Female or customized	$\pm 45^\circ$
ZDADJ2400-14-90XD	2400-2500MHz	14dBi	H:90 V:15	ABS	2XN Female or customized	$\pm 45^\circ$

### 5GHz V&H Dual Pol MiMO Sector antenna series

Model	Frequency	Gain	Beam width	Radome	Connector	Polarization
ZDADJ5159-18-60D	5150-5850MHz	18dBi	H:60 V:8	ABS	2XN Female or customized	Vertical & Horizontal
ZDADJ5159-17-90D	5150-5850MHz	17dBi	H:90 V:8	ABS	2XN Female or customized	Vertical & Horizontal

### 5GHz $\pm 45^\circ$ X Pol MiMO Sector antenna series

Model	Frequency	Gain	Beam width	Radome	Connector	Polarization
ZDADJ5159-18-60XD	5150-5850MHz	18dBi	H:60 V:8	ABS	2XN Female or customized	$\pm 45^\circ$
ZDADJ5159-17-90XD	5150-5850MHz	17dBi	H:90 V:8	ABS	2XN Female or customized	$\pm 45^\circ$

## In-Building wireless Antennas

In-building antennas add spot coverage in any difficult indoor coverage areas. They are a uniquely effective and unobtrusive solution to enhancing your in-building wireless coverage.

ZDA in-building wireless antennas feature a multi-band design that allows a wide range of frequencies to be covered by one small antenna. Created primarily for office environments, ZDA in-building wireless antennas are also ideally suited for parking garages, airports, shopping malls, hospital and other difficult coverage areas. Designed for simple installation and minimal visual impact, Antennas support both existing and future wireless applications.

### Ceiling Mount antennas 700-2500MHz

Model Number	Frequency	VSWR	Gain (dBi)	Beam width
ZDAQI8002500-3	800~2500MHz	≤1.5	3	360°
ZDAQI7002500-3	698~2500MHz	≤1.5	3	360°
ZDAQI7002700-3	698~2700MHz	≤1.5	3	360°



### Outdoor omnidirectional antennas 700-2700MHz

Model Number	Frequency	VSWR	Gain (dBi)	Beam width
ZDAQJ7002700-3	698~2700MHz	≤1.5	3	360°

### Tri-band Log Periodical Yagi antennas 800-2500MHz

Model Number	Frequenc	VSWR	Gain	Beamwidth
ZDADI8002500LP-8	800~2500MHz	≤1.5	8dBi	H:90° V:60°
ZDADI7002700LP-8	698~2700MHz	≤1.5	8dBi	H:90° V:60

### 700-2500MHz Wall Mount antennas

Model Number	Frequency	VSWR	Gain (dBi)	Horizontal Beam width	Vertical
ZDADI8002500-8	800~2500MHz	≤1.5	7	70	55
ZDADI7002500-8	698~2500MHz	≤1.5	7	70	55



■ ■ ■ Base loads Mobile antenna use a rugged .125" diameter 17-7 stainless steel tapered whip, This antenna has good VSWR, flexibility and anti-aging performance. option magnet-mount or TAD/NMO type mount

**Option:**  
 •Standard TAD/NMO type MOUNT  
 •Integrated Magnet Mount

**VHF 3dB Gain, 5/8 Wave, base loads, option mount**

Model	Frequency	Gain	size	des
ZDAEM136-3	136-144MHz	3dB		
ZDAEM144-3	144-152MHz	3dB		
ZDAEM150-3	152-162MHz	3dB		
ZDAEM162-3	162-174MHz	3dB	52" Max,	Fig1=brite finish
ZDAEM220-3	220-225MHz	3dB		
ZDAEM225-3	225-250MHz	3dB		
ZDAEM250-3	250-280MHz	3dB		



**UHF 3dB Gain, 5/8 Wave, base loads, option mount**

Model Number	Frequency range	Gain	size	des
ZDAEM400-3	406-430 MHz	3dB		
ZDAEM430-3	430-450 MHz	3dB		
ZDAEM450-3	450-470 MHz	3dB	22"MAX.	Fig1=brite finish
ZDAEM470-3	470-490 MHz	3dB		
ZDAEM490-3	490-512 MHz	3dB		



•Integrated Magnet Mount

**UHF 5dB Gain, 5/8 Wave over 5/8, base loads, option mount**

Model Number	Frequency range	Gain	size	des
ZDAEM400-5	406-430 MHz	5dB		
ZDAEM430-5	430-450 MHz	5dB		
ZDAEM450-5	450-470 MHz	5dB	39"MAX	Fig2=brite finish
ZDAEM470-5	470-490 MHz	5dB		
ZDAEM490-5	490-512 MHz	5dB		



TAD/NMO type MOUNT

■ ■ ■ Base loads Mobile antenna use a rugged .125" diameter 17-7 stainless steel tapered whip , This antenna has good VSWR, flexibility and anti-aging performance. option magnet-mount or TAD/NMO type mount

Option:  
 •Standard TAD/NMO type MOUNT  
 •Integrated Magnet Mount

**BASE LOAD 700 MHz mobile antenna, option mount**

Model Number	Frequency range (MHz)	Gain (dB)	size	des
ZDAEM700-3	698-755MHz	3	13.5"	fig1
ZDAEM700-5	698-755MHz	5	18"	fig2
ZDAEM700-7	698-755MHz	7	29"	fig3
ZDAEM750-3	746-806MHz	3	13.5"	fig1
ZDAEM750-5	746-806MHz	5	18"	fig2
ZDAEM750-7	746-806MHz	7	29"	fig3



**BASE LOAD 800 MHz mobile antenna, option mount**

Model Number	Frequency range (MHz)	Gain (dB)	size	des
ZDAEM800-3	806-896 MHz	3	13.5"	fig1
ZDAEM800-5	806-896 MHz	5	24"	fig2



TAD/NMO type MOUNT

**BASE LOAD 900 MHz mobile antenna, option mount**

Model Number	Frequency range (MHz)	Gain (dB)	size	des
ZDAEM900-3	896-970 MHz	3	13.5"	fig1
ZDAEM900-5	896-970 MHz	5	24"	fig2



Integrated Magnet Mount

■ ■ ■ Magnet mount Mobile antenna use a rugged .125" diameter 17-7 stainless steel tapered whip in our Mobile antennas. This antenna has good VSWR, flexibility and anti-aging performance. Easy mount on Metal surface by magnet base

**Quarter Wave mobile antenna, magnet mount  
118-970 MHz, unity gain**

Model Number	Frequency range	Gain (dB)	size	des
ZDAEM136-1	136-144MHz	UNITY GAIN		
ZDAEM144-1	144-152MHz	UNITY GAIN		
ZDAEM152-1	152-162MHz	UNITY GAIN		
ZDAEM162-1	162-174MHz	UNITY GAIN		
ZDAEM220-1	220-225MHz	UNITY GAIN		
ZDAEM400-2	406-430 MHz	UNITY GAIN		
ZDAEM430-2	430-450 MHz	UNITY GAIN	20" max	Fig1
ZDAEM450-2	450-470 MHz	UNITY GAIN		
ZDAEM470-2	470-490 MHz	UNITY GAIN		
ZDAEM490-2	490-512 MHz	UNITY GAIN		
ZDAEM700-2	698-755 MHz	UNITY GAIN		
ZDAEM750-2	746-806MHz	UNITY GAIN		
ZDAEM800-2	806-896MHz	UNITY GAIN		
ZDAEM900-2	896-970MHz	UNITY GAIN		



**400 MHz mobile antenna , magnet mount  
3dB gain, 5/8 wave over 1/2 wave, open coil**

Model Number	Frequency range	Gain	size	des
ZDAEM400-3	406-430MHz	3dB		
ZDAEM430-3	430-450MHz	3dB		
ZDAEM450-3	450-470MHz	3dB	36"Max	Fig2
ZDAEM470-3	470-490MHz	3dB		
ZDAEM490-3	490-512MHz	3dB		

**700/800/900MHz mobile antenna, magnet mount  
3dB Gain, 5/8 wave over 1/2 wave**

Model Number	Frequency range	Gain	size	des
ZDAEM700-3	698-755MHz	3dB		
ZDAEM750-3	746-806MHz	3dB	16"Max	Fig2
ZDAEM800-3	806-896MHz	3dB		
ZDAEM900-3	896-970MHz	3dB		

■ ■ ■ Magnet mount Mobile antenna use a rugged .125" diameter 17-7 stainless steel tapered whip in our Mobile antennas. This antenna has good VSWR, flexibility and anti-aging performance. Easy mount on Metal surface by magnet base

**700/800/900MHz mobile antenna, magnet mount  
5dB Gain, 5/8 over 5/8 over 1/4 wave, open coil**

Model Number	Frequency range	Gain (dB)	size	des
ZDAEM700-5	698-755MHz	5		
ZDAEM750-5	746-806MHz	5	24"Max	Fig3
ZDAEM800-5	806-896MHz	5		
ZDAEM900-5	896-970MHz	5		



Fig1



Fig2



Fig3

**2400MHz gain mobile antenna, magnet mount  
open coil**

Model Number	Frequency range	Gain (dB)	size	des
ZDAEM2400-3	2400-2500MHz	3		fig1
ZDAEM2400-5	2400-2500MHz	5	24"Max	fig2
ZDAEM2400-7	2400-2500MHz	7		fig3

**2600MHz gain mobile antenna, magnet mount  
open coil**

Model Number	Frequency range	Gain (dB)	size	des
ZDAEM2600-3	2500-2700MHz	3		fig1
ZDAEM2600-5	2500-2700MHz	5	24"Max	fig2
ZDAEM2600-7	2500-2700MHz	7		fig3

ZDA communications offers Rubber-Duck antenna is a coaxial sleeve design with an omni-directional pattern,

## 406-470MHz external antenna series

Model Number	Frequency range	Gain (dB)	
ZDAEW400-2	406-430MHz	2	SMA-male or customized
ZDAEW433-2	433 ± 5MHz	2	SMA-male or customized
ZDAEW430-2	430-450MHz	2	SMA-male or customized
ZDAEW450-2	450-470MHz	2	SMA-male or customized
ZDAEW470-2	470-490MHz	2	SMA-male or customized
ZDAEW490-2	490-512MHz	2	SMA-male or customized



## 698-806MHz external antenna series

Model Number	Frequency range	Gain (dB)	
ZDAEW700-2	698-755MHz	2	SMA-male or customized
ZDAEW750-2	746-806MHz	2	SMA-male or customized



## 806-896MHz external antenna series

Model Number	Frequency range	Gain (dB)	
ZDAEW800-1	806-896MHz	1	SMA-male or customized
ZDAEW800-3	806-896MHz	3	SMA-male or customized



## 900-930MHz external antenna series

Model Number	Frequency range	Gain (dB)	
ZDAEW900-3	900-930MHz	3	SMA-male or customized
ZDAEW900-5	900-930MHz	5	SMA-male or customized

Mobile antenna Special stainless steel used for antenna body. This antenna has good VSWR, flexibility and anti-aging performance.

## 2.4 GHz external antenna series

Model Number	Frequency	Gain	connector	size
ZDAEW2400-2	2400-2500MHz	2dBi	SMA-male or customized	6"
ZDAEW2400-3	2400-2500MHz	3dBi	SMA-male or customized	8"
ZDAEW2400-5	2400-2500MHz	5dBi	SMA-male or customized	13"



## 2.6 GHz external antenna series

Model Number	Frequency	Gain (dB)	connector	size
ZDAEW2600-2	2500-2700MHz	2	SMA-male or customized	4.72"
ZDAEW2600-3	2500-2700MHz	3	SMA-male or customized	8.23"



## 3.6GHz external antenna series

Model Number	Frequency	Gain (dB)	connector	size
ZDAEW3600-2	3500-3700MHz	2	SMA-male or customized	6"
ZDAEW3600-5	3500-3700MHz	5	SMA-male or customized	8.62"
ZDAEW3600-7	3500-3700MHz	7	SMA-male or customized	10.6"



## 5.8 GHz external antenna series

Model Number	Frequency	Gain (dB)	connector	size
ZDAEW5800-2	5725-5850MHz	2	SMA-male or customized	6"
ZDAEW5800-5	5725-5850MHz	5	SMA-male or customized	8.62"
ZDAEW5800-7	5725-5850MHz	7	SMA-male or customized	10.6"

# ZDA COMMUNICATIONS

Antenna Products for wireless communications

**QUALITY ---- IS OUR COMMITMENT**



**To Order: Please call or email us**

## **ZDA Communications US LLC**

100-3 Forum Dr. Suite 192, Columbia, SC 29229

E-MAIL: [sales@zdacomm.com](mailto:sales@zdacomm.com)

TEL: 803-608-4122

FAX: 803-736-5310

[www.zdacomm.com](http://www.zdacomm.com)

