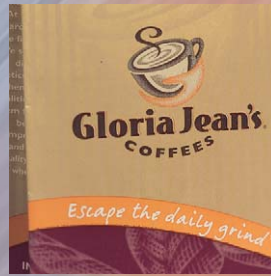
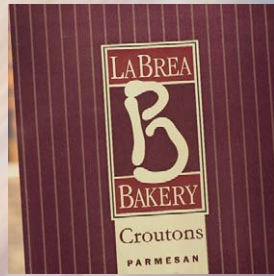
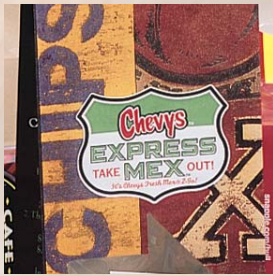


Zenith Specialty Bag Co.



ZENITH

Zenith—traditional quality with state-of-the-art technology.

Z
E
N
I
T
H



Zenith Specialty Bag Co. has gone through many changes since the company produced its first paper bag back in 1945. We have new state-of-the-art converting equipment; 95,000 square feet of manufacturing, warehouse and office space to service our customers, and a new generation of well-trained personnel. The many components of our company that have not changed is the desire to deliver to our customers the service, quality, and professional attention they have come to expect through the years.

Ron Anderson

For almost 60 years, Zenith Specialty Bag Co. has worked to provide a One-Stop Shop for all your custom printed packaging needs. The people of Zenith will work tirelessly to provide all of our customers with the type of experience that earns your repeat business. And if our association is only a one-time transaction, we will make every effort to leave you with a lasting good impression. We don't strive to be the biggest supplier of custom printed bags and wraps—but to be the *best!* We don't intend to *meet* our customer's expectations, but to *exceed* them!

Scott Anderson

Table of Contents

Introduction	2
Duplex Coffee & Window Bags	4
Bread Bags & Bakery Counter Products	5
Fast Food, Deli & Specialty Bags	6
Fast Food Sheets, Tissues & Wraps	7
Fast Food Bags & Sandwich Bags	8
Concession & Sanitary Products	9
Custom Printed Products	10
Territory Map	11
Customer Service Order Timeline	12
Art Work Requirements	14
Levels of Printing	15

Duplex Coffee & Window Bags



ITEM NO. DESCRIPTION PACK WT. CUBE

Natural Tan - Polypropylene Liner - Tin Tie

CN-1	1 lb. Coffee Bag 4¼ X 2½ X 10½	1,000	32	1.40
CN-2	2 lb. Coffee Bag 5 X 3 X 12¼	500	22	1.39
CN-5	5 lb. no Tin Ties 6½ X 4 X 18	500	40	2.10
CN-5T	5 lb. with Tin Ties 6½ X 4 X 18	500	42	2.50
CN-6	½ lb. Coffee Bag 3¾ X 2½ X 7¾	1,000	26	1.19
CN-6L	1 lb. Coffee Bag 3¾ X 2½ X 10¾	1,000	27	1.80

White Clay Coat - Poly Liner - Tin Tie

CW-1	1 lb. Coffee Bag 4¼ X 2½ X 10½	1,000	34	1.40
CW-6	½ lb. Coffee Bag 3¾ X 2½ X 7¾	1,000	24	1.19
CW-6L	1 lb. Coffee Bag 3¾ X 2½ X 10¾	1,000	30	1.80

Solid Color on White Clay Coat - Poly Liner - Tin Tie

CW-1BLK	1 lb. Coffee Bag 4¼ X 2½ X 10½ - Black	500	17	0.80
CW-1GOLD	1 lb. Coffee Bag 4¼ X 2½ X 10½ - Gold	500	17	0.80
CW-1GRN	1 lb. Coffee Bag 4¼ X 2½ X 10½ - Green	500	17	0.80
CW-1RED	1 lb. Coffee Bag 4¼ X 2½ X 10½ - Red	500	17	0.80
CW-6BLK	½ lb. Coffee Bag 3¾ X 2½ X 7¾ - Black	500	11	0.70
CW-6GOLD	½ lb. Coffee Bag 3¾ X 2½ X 7¾ - Gold	500	11	0.70
CW-6GRN	½ lb. Coffee Bag 3¾ X 2½ X 7¾ - Green	500	11	0.70
CW-6RED	½ lb. Coffee Bag 3¾ X 2½ X 7¾ - Red	500	11	0.70

Holiday Print - Poly Liner - Tin Tie

CW-1XMAS	1 lb. Coffee Bag-Holiday Print 4¼ X 2½ X 10½	500	17	0.80
CW-6XMAS	½ lb. Coffee Bag-Holiday Print 3¾ X 2½ X 7¾	500	11	0.70
TW-4XMAS	Window Bag-Holiday Print 4¾ X 2½ X 9¾	500	19	1.05
CN-1HOL	1 lb. Nat Kraft Coffee Bag-Holiday Print 4¼ X 2½ X 10½	500	16	1.54
CN-6HOL	½ lb. Nat Kraft Coffee Bag-Holiday Print 3¾ X 2½ X 7¾	500	11	0.89

Window Bags - Poly Liner - Tin Tie

CN-6WIN	½ lb. Window Bag-Plain Nat Kraft 3¾ X 2½ X 7¾	500	13	0.89
CW-6WIN	½ lb. Window Bag-Plain White 3¾ X 2½ X 7¾	500	13	0.89
TN-4	Window Bag-Plain Nat Kraft 4¾ X 2½ X 9¾	1,000	33	2.07
TW-4	Window Bag-Plain White 4¾ X 2½ X 9¾	1,000	33	2.07
TW-5	Window Bag-Plain White 6 X 2¾ X 9¼	1,000	35	2.25
TW-6	Window Bag-Stock Print 6 X 2¾ X 9¼	1,000	35	2.25

Natural Tan - Glassine Liner - Tin Tie

CN-1G	1 lb. Coffee Bag 4¼ X 2½ X 10½	1,000	35	1.40
CN-6G	½ lb. Coffee Bag 3¾ X 2½ X 7¾	1,000	28	1.19
CN-6LG	1 lb. Coffee Bag 3¾ X 2½ X 10¾	1,000	30	1.80

ITEM NO. DESCRIPTION PACK WT. CUBE

PLA Lined Duplex Bags

CN-6PLA	½ lb. Coffee Bag-Plain Nat Kraft 3¾ X 2½ X 7¾	1000	26	1.19
CN-1PLA	1 lb. Coffee Bag-Plain Nat Kraft 4¼ X 2½ X 10½	1000	32	1.40
CN-2PLA	2 lb. Coffee Bag-Plain Nat Kraft 5 X 3 X 12¼	500	22	1.39
CN-5TPLA	5 lb. Coffee Bag-Plain Nat Kraft 6½ X 4 X 18	500	42	2.50
TN-4PLA	Window Bag-Plain Nat Kraft 4¾ X 2½ X 9¾	1000	33	2.07

The above bags are lined with PLA (polylactic acid). PLA is a corn-based polymer. This environmentally friendly renewable resource is 100% compostable.

Bread Bags & Bakery Counter Products

ITEM NO. DESCRIPTION PACK WT. CUBE

Bleached Kraft - Plain & Stock Prints

515	French Bread Bag-Plain	5¼ X 3¼ X 18	1,000	26	1.15
520	French Bread Bag-Plain	5¼ X 3¼ X 20	1,000	29	1.15
521	French Bread Bag-Plain	5¼ X 3¼ X 22	1,000	32	1.39
522	French Bread Bag-Print	5¼ X 3¼ X 22	1,000	32	1.39
523	Baguette Bag-Eiffel Tower Print	3½ X 2 X 24	1,000	21	1.61
528	French Bread Bag-Plain	4½ X 2½ X 28	1,000	33	1.69

Foil/Kraft Lamination - Stock Print

524-G5	Garlic Bread Bag-Print	5¼ X 3¼ X 20	500	23	1.47
--------	------------------------	--------------	-----	----	------

Natural Kraft w/PLA Panel - Stock Print

520-NPX	Wheat-Print w/ 2" Panel-Print	5¼ X 3¼ X 20	1,000	28	1.15
522-NPX	Wheat-Print w/ 2" Panel-Print	5¼ X 3¼ X 22	1,000	30	1.39
523-NPX	Wheat-Print w/ 1" Panel-Print	3½ X 2 X 24	1,000	22	1.61
585-NPX	Wheat-Print w/ 3" Panel-Print	8½ X 3¼ X 14	1,000	32	2.16

The panel on our stock wheat design bread bags is made with PLA (polylactic acid). PLA is a corn-based polymer. This environmentally friendly renewable resource is 100% compostable.



ITEM NO. DESCRIPTION PACK WT. CUBE

Pan Liners Quilon Treated Paper

27	Full Size Pan Liners	16½ X 24½	1,000	24	0.69
27-C	Full Size Pan Liners	16½ X 24½	500	13	0.81
275	Half Size Pan Liners	12¼ X 16½	2,000	24	0.69

Pick Up Tissue - Dry Wax

2000	D/W Pick Up Tissue (20/1M)	6 X 6	20,000	27	1.12
2050	D/W Pick Up Tissue (10/1M)	6 X 10¼	10,000	20	0.72



Fast Food, Deli & Specialty Bags



STOCK NO. DESCRIPTION PACK WT. CUBE

Doggie Bags

111	Doggie Bag-Print 4¼ X 2 X 10¼	500	7	0.29
222	Doggie Bag-Print 5 X 2¼ X 11¼	500	14	0.67
777	Doggie Bag-Print 5 X 2¼ X 11¼	500	13	0.67

Glassine Bags

G-200	Midget Glassine Bag 2 X 2¼	20,000	27	1.73
G-201	1 Oz Glassine Bag 2¼ X 4¼	20,000	43	3.08
G-202	No. 2 Glassine Peanut Bag 3¼ X 4¼	20,000	50	3.08
G-204	¼ Lb Glassine Bag 3¼ X 6¼	12,000	47	2.44
G-205	½ Lb Glassine Bag 4¼ X 6¼	12,000	61	2.44
G-206	1 Lb Glassine Bag 5¼ X 7¼	6,000	54	2.42
G-207	2 Lb Glassine Bag 6¼ X 9	6,000	53	2.37

Hot Food Bags - Foil

6640	Foil Pt. Hot Food Bag-Print 4 X 3 X 10½	1,000	15	0.68
6641-500	Foil Qt. Hot Food Bag-Print 5¼ X 3½ X 11¼	500	14	0.63
6642-500	Foil ½ Gal. Hot Food Bag-Print 6¼ X 3¾ X 14	500	20	0.69

Kid'z Meal Bags*

KM-1	Kid'z Meal Bag-Print 6 X 3¾ X 10¼	250	6.3	0.30
------	-----------------------------------	-----	-----	------

Sandwich Bags - Fish & Chips

444	Fish & Chips Bag-Print 5¼ X 2¼ X 14	1,000	25	1.74
-----	-------------------------------------	-------	----	------

Sandwich Bags - Submarine

333	Submarine Sandwich Bag-Print 4½ X 2¼ X 14	1,000	17	1.05
-----	---	-------	----	------

*Please confirm design of Kid'z Meal Bag with your customer service rep at time of purchase as the theme changes with each season. Design in catalog may be different from what Zenith has on the floor.



Fast Food Sheets, Tissues & Wraps



STOCK NO.	DESCRIPTION	PACK	WT.	CUBE	STOCK NO.	DESCRIPTION	PACK	WT.	CUBE
Patty Paper - Dry Wax					Sheets - Snak Pak				
PP-5	D/W Patty Paper (20/1M) 5 X 5	20,000	32	0.96	960	S/P Sheets (6/1M) 9 X 12	6,000	33	0.90
PP-6	D/W Patty Paper (10/1M) 6 X 6	10,000	19	0.70	960-CB	S/P Red Checkerboard (6/1M) 9 X 12	6,000	33	0.90
Menu Tissue - Unwaxed					1260	S/P Sheets (5/1M) 12 X 12	5,000	36	0.96
T-12	Menu Tissue (10/1M) 12 X 12	10,000	39	1.61	1260-CB	S/P Red Checkerboard (5/1M) 12 X 12	5,000	37	0.96
Sheets-Interfolded - Dry Wax					1261	S/P Sheets-Yellow (5/1M) 12 X 12	5,000	37	0.96
C-812	D/W Interfolded Sheets (12/500) 8 X 10%	6,000	26	0.98	1264	S/P Fiesta Print (5/1M) 12 X 12	5,000	35	0.96
C-1012	D/W Interfolded Sheets (12/500) 10 X 10%	6,000	31	1.18	1270-CB	S/P Blue Checkerboard (5/1M) 12 X 12	5,000	37	0.96
Sheets - Dry Wax					1280-CB	S/P Black Checkerboard (5/1M) 12 X 12	5,000	37	0.96
912	D/W Sheets (6/1M) 9 X 12	6,000	35	0.90	1290-CB	S/P Green Checkerboard (5/1M) 12 X 12	5,000	37	0.96
1258	D/W Sheets (5/1M) 12 X 12	5,000	39	0.96	1660	S/P Sheets (3/1M) 15 X 16	3,000	37	1.07
1259	D/W Sheets-Yellow (5/1M) 12 X 12	5,000	39	0.96					
1414	D/W Sheets (4/1M) 14 X 14	4,000	43	1.15					
1616	D/W Sheets (3/1M) 16 X 16	3,000	39	1.07					

Fast Food Bags & Sandwich Bags



ITEM NO.	DESCRIPTION	PACK	WT.	CUBE
----------	-------------	------	-----	------

Portion Bags - Snak Pak

6522	#3 S/P French Fry Bag 4½ X 3¼	2,000	4	0.25
6526	#8 S/P Sandwich Bag 5 X 4½	2,000	6	0.23
6527	#9 S/P French Fry Bag 5½ X 4½	2,000	6	0.31
6528	#10 S/P Sandwich Bag 6 X 4½	2,000	6	0.34
6530	#12 S/P Sandwich Bag 5 X 1½ X 4½	2,000	7	0.43
6531	#14 S/P Sandwich Bag 6 X 6½	2,000	10	0.46
6532	#16 S/P Sandwich Bag 6½ X 8	2,000	12	0.69
6533	#18 S/P Sandwich Bag 6 X ¾ X 6½	2,000	10	0.70
6533-OS	#18 S/P Open Side Bag 7 X ½ X 6½	2,000	9	0.70
6534	#19 S/P Sandwich Bag 6 X ¾ X 7¼	2,000	12	0.70
6535	#6 S/P French Fry Bag 4½ X 4½	2,000	4	0.31
6536	#25 S/P Sandwich Bag 6½ X 1 X 8	2,000	12	0.91
6536-NAT	#25 S/P Nat Kraft Sandwich Bag 6½ X 1 X 8	2,000	12	0.91
6552	#19 S/P Yellow Sandwich Bag 6 X ¾ X 7¼	2,000	12	0.70
6575	#29 S/P Hot Dog Bag 3 X 1¾ X 9	2,000	10	0.69

Portion Bags - Dry Wax

5	#5 D/W French Fry Bag 5 X 4	2,000	6	0.31
6	#6 D/W French Fry Bag 4½ X 4½	2,000	6	0.31
8	#8 D/W French Fry Bag 5 X 4½	2,000	6	0.31
12	#12 D/W Sandwich Bag 5 X 1½ X 4½	2,000	9	0.43
14	#14 D/W Sandwich Bag 6 X 6½	2,000	10	0.46
19	#19 D/W Sandwich Bag 6 X ¾ X 7¼	2,000	14	0.70
19-Y	#19 D/W Yellow Sandwich Bag 6 X ¾ X 7¼	2,000	11	0.70
25	#25 D/W Sandwich Bag 6½ X 1 X 8	2,000	13	0.91
29	#29 D/W Hot Dog Bag 3 X 1¾ X 9	2,000	11	0.69
31	#31 D/W Open Side Hot Dog Bag 3 X 1¾ X 9	2,000	11	0.50

Concession & Sanitary Products

ITEM NO. DESCRIPTION PACK WT. CUBE

Popcorn Bags

P-400	Popcorn Bag - Wagon Print	3½ X 2¼ X 7¼	2,000	13	0.59
P-402	Popcorn Bag - Jumbo Clown Print	5 X 1 X 10	2,000	23	1.14

Popcorn Bags - Theater - Wagon Print - Run to order*

TP-32	32 Oz Popcorn Bag	4¼ X 2½ X 6¾	1,000	23	0.91
TP-46	46 Oz Popcorn Bag	4¼ X 2½ X 8¾	1,000	25	1.10
TP-85	85 Oz Popcorn Bag	5½ X 3¼ X 8¾	500	18	0.91
TP-130	130 Oz Popcorn Bag	7¼ X 3¼ X 9½	500	24	1.00
TP-170	170 Oz Popcorn Bag	7¼ X 3¼ X 11½	250	14	0.88

*Please contact Customer Service for minimums on the above run to order items.

Sandwich & Hot Dog Bags - Foil

F-661	Foil Sandwich Bag-Plain	6 X 1 X 6½	1,000	11	0.46
F-662	Foil Hamburger Bag-Print	6 X 1 X 6½	1,000	10	0.46
F-663	Foil Cheeseburger Bag-Print	6 X 1 X 6½	1,000	10	0.46
F-664	Foil Hot Dog Bag-Plain	3½ X 1½ X 9	1,000	10	0.44
F-665	Foil Hot Dog Bag-Print	3½ X 1½ X 9	1,000	10	0.44
F-667	Foil King Size Hot Dog-Plain	3½ X 1½ X 12	1,000	13	0.59
F-668	Foil King Size Hot Dog-Print	3½ X 1½ X 12	1,000	13	0.59
F-728	Foil Sandwich Bag-Plain	7 X 2 X 8	1,000	15	0.69



ITEM NO. DESCRIPTION PACK WT. CUBE

Basket Liners

S-309	Waxed Basket Liner	8 X 3¾ X 14	500	16	1.05
-------	--------------------	-------------	-----	----	------

Bedside Bags

1010	Bedside Bag-Print	6 X 2 X 11	1,000	19	1.12
------	-------------------	------------	-------	----	------

Sanitary Bags

S-301	Sanitary Napkin Bag-Print	4 X 1¼ X 8¾	1,000	10	0.50
-------	---------------------------	-------------	-------	----	------

Toilet Seat Bands

S-300	Seat Bands-Print		2,000	5	0.21
-------	------------------	--	-------	---	------

Water Glass Bags

G-325	Glassine Bag-Print	3½ X 1½ X 7¼	2,000	12	0.44
S-325	Super White Bag-Print	3½ X 1½ X 7¼	2,000	11	0.59



Custom Printed Bags



At Zenith we realize that a quality printed product begins with quality printed artwork and printing plates. This is why we have a full in-house Art Department capable of handling all facets of the artwork process, from design all the way to plates. Our competent staff can assist you in maximizing the look of your package with their design expertise and knowledge of our printing parameters.

As you would expect, we utilize the latest software tools and upgraded equipment. In addition to the traditional negative-to-plate process, we are utilizing

new computer-to-plate software (CTP) technology for some high-end jobs to press the limits of flexographic printing. Having all our prepress operations performed in-house allows us to ensure total quality and control of every step of the process.

Because proper planning and execution is the key to any printing project, we offer prepress guidelines to assist designers in building electronic files. For a copy of our most updated Art Work Requirements sheet, contact our Customer Service Department or visit our website at www.zsb.com

Territory Map

Zenith Locations



★ Company Headquarters and Manufacturing

■ Distribution Center

● Sales Offices

Company Headquarters

Zenith Specialty Bag Co., Inc.
 17625 E. Railroad St.
 City of Industry, CA 91748
 Tel: (800) 962-2247
 Fax: (800) 284-8493

Distribution Centers

17709 E. Valley Blvd.	929 Neversink Street
City of Industry, CA 91744	Reading, PA 19606

Sales Offices

Northern California Sales Office
 11 6 Waterboro Square
 Folsom, CA 95630
 Tel: (916) 984-5656
 Fax: (916) 984-5655

Northwest Sales Office
 1302 Hoyt Avenue
 Everett, WA 98201
 Tel: (425) 317-8485
 Fax: (425) 317-8495

East Coast Sales Office
 29 Cottage Street
 Sharon, MA 02067
 Tel: (781) 784-0774
 Fax: N/A

Customer Service Order Timeline

Z
E
N
I
T
H

Your Customer Service Representative:

is responsible for an assigned customer list, territory and broker group. This platform is designed to help the Customer Service Representative understand the needs of their customer.

Once your custom order has been received:

your Customer Service Representative enters the order into our system—which then allots for the raw material and cartons to be ordered, the inks to be formulated, the labels to be printed, and machine time to be scheduled.

As your order moves through the system:

your Customer Service Representative tracks your order through the art process—arranging ink draw-downs and art proofs to be sent out.



Timing is everything:

so walking your order through the system becomes more than just a process; it is a passion. Signed and approved art work signals to our scheduling department that an order is ready for converting once the paper has arrived. Customer Service monitors your order from this point weekly to ensure the production date is met, and will advise their customer of any unforeseen changes to the date.





On the floor and out the door:

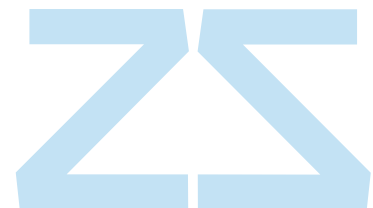
over 300,000 pounds of paper is received and converted weekly in our plant. Your order may only represent 250 pounds, but it does not fall off the radar screen with your Inside Sales person. Their goal is to have your order converted and shipped two weeks or less from the time the paper hits the floor.



We deliver more than packaging— we deliver satisfaction:

Meeting the challenges of today's market and customer needs in quality of service, quality of printing and creative packaging is what Zenith Specialty Bag Co. is all about.

That's why we have successfully been *Baggin' the industry since 1945!*



Art Work Requirements

Electronic Pre-Press Guidelines for Flexo Printing

Software

If your software package is not listed please call before sending file.

- Adobe Illustrator 10 or CS2
- Adobe Photoshop 7 or CS2
- QuarkXPress 6.0
- Adobe PageMaker 6.5
- Freehand 10.0 or MX (Mac only)
- Corel Draw 10.0
- Earlier versions are also usually acceptable.

Media

We can accept files if they are saved on these formats:

- Floppy disk: Mac or PC
- Zip Disk 100MB or 250MB (Mac or PC)
- CD Rom

Fonts & Graphics Required:

- Include all screen and printer fonts (Suitcase and Postscript fonts) or convert type to outlines.
- Include all placed files, e.g., EPS files and their originals, TIFFs, PICTs, and Photoshop documents.
- Scanned images of 4-color process printing must be at a resolution of 300 dpi.
- Scanned line art must be at 1200 dpi.
- Use POSTSCRIPT fonts whenever possible.

Camera ready art:

- Send only when electronic art is not available.
- Mechanicals with crops-to-size.

E-Mail/Modem:

Prior to sending us art work via e-mail, contact our Customer Service Department and notify us what files you will be sending. Our Customer Service Department will then initiate the paperwork necessary for our Art Department. Please specify in your e-mail whether you are using Mac or PC files. The files must be sent to us compressed by Win Zip Compression on PC and Stuffit on Mac. Also, please make sure the files are self-extracting.

E-mail: art.dept@zenithbag.com

Templates

- Templates are available upon request from the Art Department and recommended to insure proper layout and to avoid costly re-works.
- They are available electronically in Illustrator and/or in die vinyl format.

Laser Separations

- If you know that the job is going to be Pantone or spot colors, make sure there are no other colors in your file other than the colors that you are using. Always supply us with b/w laser separations when submitting art. This will insure that the file is prepared properly and will avoid costly re-works. Remember: If you are unable to print laser separations, we will encounter the same problems.

Levels of Printing

Zenith offers a wide variety of printing due to our vast product line. The levels of printing that we offer are primarily broken down by product line. See specifications for the 4 levels of printing on the next page:

- **Level A:** High-end small multi-wall square-bottom bags for coffee, cookies, mixes, pet food, etc.
- **Level B:** Large multi-wall square-bottom bags for tortilla chips, fertilizer, etc.
- **Level C:** All single-wall square-bottom bags and all pinch-bottom bags for sandwiches and bread.
- **Level D:** All sheets for sandwich wrap and basketliners.

Trapping, Distortions, Screens

Since we will output the negatives, we will trap the file, set screens and compensations for dot gains, and distort the file to compensate for "plate gain" or stretch. We do not recommend that you supply negatives. If you are, please contact our Art Department for specifications.

Levels of Printing



Below are specifications for our 4 levels of printing. Prior to designing artwork, please verify with our office that the level of printing you are using corresponds to the product we will be producing.

Level A

High-end multi-wall square-bottom bags for coffee, cookies, mixes, pet food, etc.

- Maximum # of colors: 7 (including varnish)
- Maximum line screen: 155
- Tint ranges: 20% - 80%
- Plate movement: + / - 1/64"

Please design artwork so that overprints allow for a 1-point trap.

- Minimum point size:
Text: 4 points
Lines: .75 point

Reversed type may be "stroked" to compensate for fill-in during printing.

Level B

Large multi-wall square-bottom bags for tortilla chips, fertilizer, etc.

- Maximum # of colors: 6 (including varnish)
- Maximum line screen: 85
- Tint ranges: 20% - 80%
- Plate movement: + / - 1/32"

Please design artwork so that overprints allow for a 2-point trap.

- Minimum point size:
Text: 6 points
Lines: .75 point

Reversed type may be "stroked" to compensate for fill-in during printing.

Level C

All single-wall square-bottom bags and all pinch-bottom bags for sandwiches and bread.

- Maximum # of colors: 4
- Maximum line screen: 65
- Tint ranges: 20% - 80%
- Plate movement: + / - 1/16"

Please design artwork so that overprints allow for a 2-point trap.

- Minimum point size:
Text: 6 points
Lines: .75 point

Reversed type may be "stroked" to compensate for fill-in during printing.

Level D

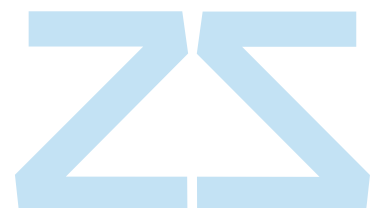
All sheets for sandwich wrap and basket liners.

- Maximum # of colors: 4
- Maximum line screen: 55
- Tint ranges: 20% - 80%
- Plate movement: + / - 1/16"

Please design artwork so that overprints allow for a 2.5-point trap.

- Minimum point size:
Text: 6 points
Lines: .75 point

Reversed type may be "stroked" to compensate for fill-in during printing.



17625 East Railroad St. • P.O. Box 8445 • City of Industry, CA 91748-0445 • P: (626) 912-2481 • F: (800) 284-8493 • www.zsb.com

ZENITH