

MARK V LABORATORY

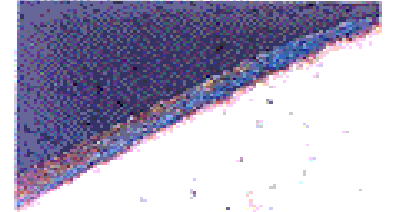
METALLURGICAL EQUIPMENT & SUPPLIES FOR QUALITY, PRICE & CUSTOMER SERVICE

800-243-9776

markvmet@netscape.net

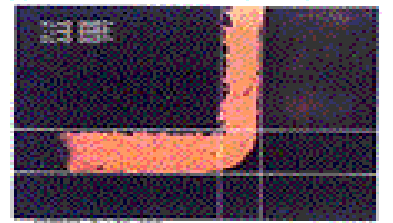
CUT-OFF & SECTIONING

Cut-off Machines
Cut-off Wheels
Diamond Blades
PCB Saws & Routers



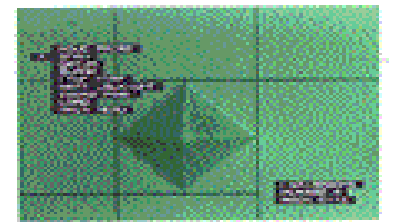
MOUNTING SYSTEMS & SUPPLIES

Acrylic & Epoxy Mounting Systems
1 Minute Mounting System
Mounting Powders, Automatic Press & Supplies



GRINDING MACHINES & SUPPLIES

Grinder/Polisher Machines
Diamond Discs
Discs, Rolls, Sheets, Strips & Belts



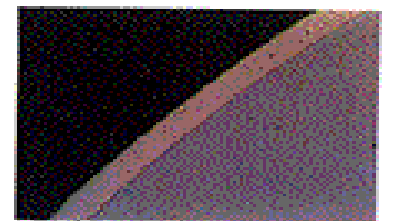
POLISHING MACHINES & SUPPLIES

Equipment
Diamond Paste
Polishing Slurries & Sprays
Polishing Suspensions & Powders
Polishing Cloths
Lapping Films
Magna Disc Quick-Change Polishing System

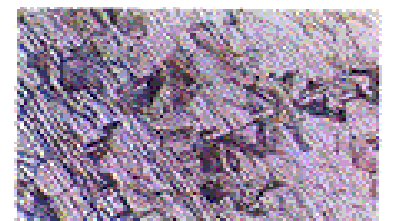


LABORATORY EQUIPMENT & SUPPLIES

Metallurgical Microscopes
Video Inspection & Measuring
PC Capture & Camera Systems
Film & Microscope Accessories
Illuminators & Bulbs
Hardness Testers
Etchers & Vibrogravers
Hot Plates, Ovens, & Furnaces
Surface Thermometers
Ultrasonic Cleaners



BULLETIN BOARD 2008
Reconditioned Metallurgical Equipment
Surplus Supplies



MARK V LABORATORY
18 KRIPES RD. EAST GRANBY, CT 06026
800-243-9776 860-653-7201 fax 860-653-4087

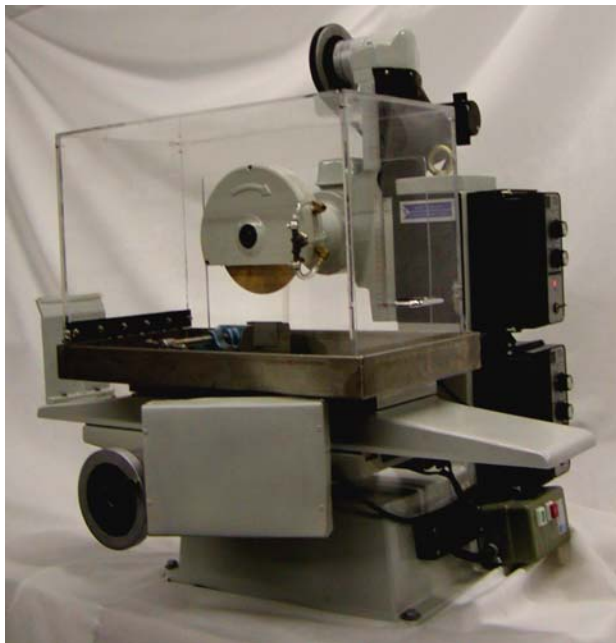
MARK V LABORATORY

METALLURGICAL LOW DEFORMATION CUT-OFF & SECTIONING MACHINES SELF CONTAINED COOLING, AUTO OR MANUAL FEEDS & FULL SAFETY SYSTEMS



Manufactured by Mark V Lab, the 600 Series Line of machines offers automatic high-low speed sectioning without deformation to the sample. A Gravity Feed Systems allows for a wide range of Feed Rates, Automatic Operation and Shut-off. Internal Coolant Tank cools the blade and sprays the sample for a Cold Cut. Safety Features include Low Voltage Controls & Safety Cover Auto-Shut-Off Systems. Single, Dual & Variable Speed Motors offer Blade Speeds from 0-3500 r.p.m. with a cutting capacity of 1 1/2". A variety of Cut-Off Blades & Diamond Blades are available for cutting anything from very hard to soft materials such as alloyed steels, powdered metals, titanium, etc. to aluminum, brass, plastics and composite materials. 110/220V

Item	Description	AUTOMATIC MACHINES
CD600	DUAL SPEED, (2000 + 3450 RPM) 6" CUT-OFF MACHINE	
CS600A	SINGLE SPEED (3450 RPM) 6" CUT-OFF MACHINE	
CSQSV	STAINLESS QUICK ACTION VISE F/ SERIES 600	
DW600A	DUAL WHEEL AUTOMATIC 6" CUT-OFF MACHINE	
MC-600	VARIABLE SPEED (0-3000 RPM) 6" W/ MICRO CROSS- FEED	
MV-600	VARIABLE SPEED (50-3500 RPM) 6" SECTIONING MACHINE	



Mark V Lab Thin Sectioning/Slotting Machine features Micrometer Controls in 3 axis & Auto Variable Speed feed in vertical Downfeed and Horizontal Crossfeed. Precision section or slot a wide variety of materials from ceramics and composites to the toughest metal alloys to a few thousandths width. With the correct choice of Diamond, Borazon or Thin Abrasive Blades the TS-700AS will cut any material up to 2" thick without deformation or heat-up at 3450 rpm. The TS-700AS features a Recirculating Cooling System, Automatic Feed & Shut-Off System, Large Fully Enclosed Cutting Chamber with Stainless Steel Tray and Quick-Action Vise. The Machine comes complete with the following 7 x .020 x 1 1/4" Diamond (for ceramics, etc.) Aluminum Oxide (for ferrous metals & alloys) and Silicon Carbide (for titanium & non-ferrous metals) Blades. 110V 10Amp

AUTOMATIC & MANUAL 3 AXIS SECTIONING MACHINES

Item	Description
TS-700	THIN-SECTIONING 7" MACHINE W/ MANUAL FEEDS
TS-700A	THIN-SECTIONING 7" MACHINE W/ 1 AUTO FEED
TS-700AS	THIN-SECTIONING/ SLOTTING 7" MACHINE W/ 2 AUTO FEED'S
TS-QSV	STAINLESS QUICK ACTION VISE F/ 700 SERIES
TS-QVA	STEEL QUICK ACTION VISE F/ 700 SERIES

MARK V LABORATORY
18 KRIPES RD. EAST GRANBY, CT 06026
800-243-9776 860-653-7201 fax 860-653-4087

MARK V LABORATORY

METALLURGICAL LOW DEFORMATION SECTIONING MACHINES WITH SELF CONTAINED COOLING, MANUAL FEED GUIDES & FULL SAFETY COVERS



Manufactured by Mark V Lab. This Watercooled Diamond Sectioning Machine is ideal for cutting coupons from small PCB's, Thin Wall Metal Stampings, Eyelets, etc..Small Desktop unit allows the operator to easily cut close to plated-through holes or other areas of interest. Thick multi-layer boards, even ceramic components are sectioned in minutes not hours. The machine comes with Enclosed Coolant Tank, **DB412-8** 4x .012 x 5/8" Diamond Blade, **RW-4** Reinforced Abrasive Blade, Heavy Duty Cutting Table, Work Lamp, GFI Circuit Protection and Safety Cover Spray Shield. 110V.

Item	Description
PCS-400	PRINTED CIRCUIT SAW W/4" DIAMOND BLADE & FEED TABLE
DB412-8	4"X.012"X5/8" DIAMOND BLADE, FINE CUTTING
DB420	4"X.014"X5/8" DIAMOND BLADE, AGGRESSIVE CUTTING
RW-4	4" X .040" X 5/8" REINFORCED ABRASIVE BLADE, EA.



Manufactured by Mark V LAB. The **PCS-600** Watercooled Diamond Sectioning Machine is ideal for cutting coupons from small to large PCB's, even boards with mounted components. Table Top unit allows the user to easily cut close to plated-through holes or other areas of interest. Hard to cut Kevlar and thick multi-layer boards, even ceramic components are sectioned in minutes not hours. Unlike punches or even routers the PCS-600 gives a smooth deformation free cut that greatly reduces grinding time and eliminates stress induced failures.

The **MTS/600** Materials Sectioning Machine is ideal for cutting flat stock, thin wall stampings and tubes, can tops, circuit boards, etc. without deformation .Dual Range Motor gives blade speeds of 3450 & 2000 rpm. for cutting a wide variety of materials with Diamond 6 x .020 X 5/8" or Abrasive Blades. Both machines come with an Enclosed Coolant Tank, Large 18 x 11.5" Heavy Duty Cutting Table, Mitered Feed Guide Low Voltage Controls, Work Lamp & Safety Spray Shield. 110V.

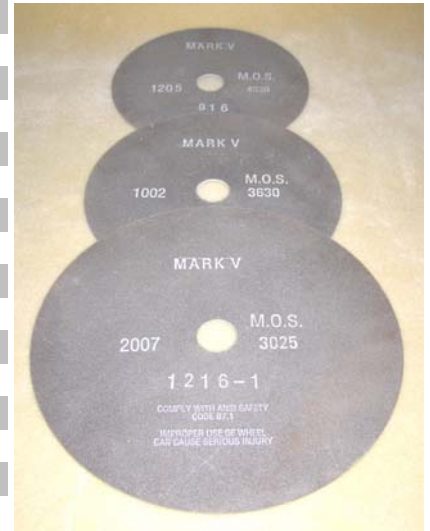
Item	Description	Price
PCS-600	PRINTED CIRCUIT SAW W/6" DIAMOND BLADE & FEED GUIDE	
MTS/600	MATERIALS 6" TABLE SAW, W/ 2 SPEEDS	
DB620	6"X.020"X5/8" DIAMOND BLADE, EA.	
RW-6	6" X. 040" X 5/8" REINFORCED ABRASIVE BLADE, EA.	

MARK V LABORATORY
 18 KRIPES RD. EAST GRANBY,CT 06026
 800-243-9776 860-653-7201 fax 860-653-4087

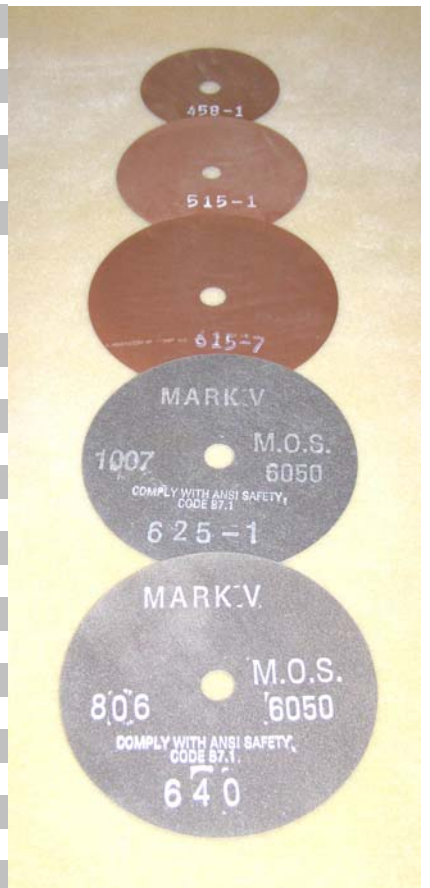
MARK V LABORATORY

LABORATORY GRADE RUBBER BONDED CUT-OFF & SECTIONING BLADES IN ALUMINUM OXIDE, SILICON CARBIDE & REINFORCED ABRASIVE

Item	Description
REPLACEMENT FOR	BUEHLER, LECO & STRUERS CUT-OFF MACHINES
1016-1	10"X1/16"X1-1/4" A/O CUT-OFF WHEEL, 10/PKG.
1016-4	10"X1/16"X1-1/4" A/O CUT-OFF WHEEL, 10/PKG.
1016-7	10"X1/16"X1-1/4" S/C CUT-OFF WHEEL, 10/PKG.
1040-1	10"X.040"X1-1/4" A/O CUT-OFF WHEEL, 10/PKG.
1216-1	12"X1/16"X1-1/4" A/O CUT-OFF WHEEL, 10/PKG.
1232-1	12"X3/32"X1-1/4" A/O CUT-OFF WHEEL, 10/PKG.
1232-4	12"X3/32"X1-1/4" A/O CUT-OFF WHEEL, 10/PKG.
1232-7	12"X3/32"X1-1/4" S/C CUT-OFF WHEEL, 10/PKG.
1245-1	12"X.045"X1-1/4" A/O CUT-OFF WHEEL, 10/PKG.
1432-1	14"X3/32"X1-1/4" A/O CUT-OFF WHEEL, 10/PKG.
1445-1	14"X.045"X1 1/4" A/O CUT-OFF WHEEL, 10/PKG.
916-1	9"X1/16"X1-1/4" A/O CUT-OFF WHEEL, 10/PKG.
916-4	9"X1/16"X1-1/4" A/O CUT-OFF WHEEL, 10/PKG.
916-7	9"X1/16"X1-1/4" S/C CUT-OFF WHEEL, 10/PKG.
932-1	9"X.032"X1-1/4" A/O CUT-OFF WHEEL, 10/PKG.
932-7	9"X.032"X1-1/4" S/C CUT-OFF WHEEL, 10/PKG.



REPLACEMENT FOR	BUEHLER, LECO & STRUERS SLOW SPEED SAWS
412-1	4"X.012"X1/2" A/O CUT-OFF WHEEL, EA.
412-1-10	4"X.012"X1/2" A/O CUT-OFF WHEEL, 10/PKG.
412-7	4"X.012"X1/2" S/C CUT-OFF WHEEL, EA.
412-7-10	4"X.012"X1/2" S/C CUT-OFF WHEEL, 10/PKG.
515-1	5"X.015"X1/2" A/O CUT-OFF WHEEL, EA.
515-1-10	5"X.015"X1/2" A/O CUT-OFF WHEEL, 10/PKG.
515-7	5"X.015"X1/2" S/C CUT-OFF WHEEL, EA.
515-7-10	5"X.015"X1/2" S/C CUT-OFF WHEEL, 10/PKG.



REPLACEMENT FOR	MARK V LAB CUT-OFF & SECTIONING MACHINES
615-1	6"X.015"X5/8" A/O CUT-OFF WHEEL, EA.
615-10	6"X.015"X5/8" A/O CUT-OFF WHEEL, 10/PKG.
615-7	6"X.015"X5/8" S/C CUT-OFF WHEEL, EA.
615-7-10	6"X.015"X5/8" S/C CUT-OFF WHEEL, 10/PKG.
625-1	6"X.025"X5/8" A/O CUT-OFF WHEEL, EA.
625-10	6"X.025"X5/8" A/O CUT-OFF WHEEL, 10/PKG.
625-7	6"X.025"X5/8" S/C CUT-OFF WHEEL, EA.
625-7-10	6"X.025"X5/8" S/C CUT-OFF WHEEL, 10/PKG.
640	6"X.040"X5/8" A/O CUT-OFF WHEEL, EA.
640-10	6"X.040"X5/8" A/O CUT-OFF WHEEL, 10/PKG.
644	6"X.040"X5/8" A/O CUT-OFF WHEEL, EA.
644-10	6"X.040"X 5/8" A/O CUT-OFF WHEEL, 10/PKG.
647	6"X.040"X5/8" S/C CUT-OFF WHEEL, EA.
647-10	6"X.040"X5/8" S/C CUT-OFF WHEEL, 10/PKG.
RW-4	4" X .040" X 5/8" REINFORCED WHEEL, EA.
RW-4-10	4" X .040"X5/8" REINFORCED A/O WHEELS, 10/PKG.
RW-6	6" X .040" X 5/8" REINFORCED WHEEL, EA.
RW-6-10	6" X .040"X5.8" REINFORCED A/O WHEELS, 10/PKG.

MARK V LABORATORY

LABORATORY GRADE METAL BONDED DIAMOND & BORAZON BLADES DIAMOND BLADES IN FINE SECTIONING & AGGRESSIVE GRITS

Item	Description
REPLACEMENT FOR	MARK V LAB SECTIONING MACHINES
DB412-8	4"X.012"X5/8" DIAMOND BLADE FOR PCS-400 FINE
DB420	4"X.014"X5/8" DIAMOND BLADE FOR PCS-400 COARSE
DB619	6"X.019"X5/8" DIAMOND BLADE FOR SERIES 600 FINE
DB620	6"X.020"X5/8" DIAMOND BLADE FOR SERIES 600 COARSE
DB720	7"X.020"X1.25" DIAMOND BLADE FOR 700 SERIES
REPLACEMENT FOR	BUEHLER, LECO & STRUERS DIAMOND SAWS
DB3006	3"X.006" X1/2" DIAMOND BLADE
DB412	4"X.012"X1/2" DIAMOND BLADE
DB515	5"X.015" X1/2" DIAMOND BLADE
DB515H	5"X.015" X1/2" HIGH CON. DIAMOND BLADE



LABORATORY GRADE CUT-OFF & SECTIONING SUPPLIES

CW128	WATER SOLUBLE CUTTING OIL, 1 GAL.	MSDS
CW32	WATER SOLUBLE CUTTING OIL, 1 QT.	
SO128	SOLUBLE CUTTING OIL, 1 GAL.	MSDS SO
SO32	SOLUBLE CUTTING OIL, 1 QT.	
PSI-A	DRESSING STICK F/ ABRASIVE BLADES, EA.	
PSI-D	DRESSING STICK F/ DIAMOND BLADES, EA.	

VARIABLE SPEED MICROMETER FEED DIAMOND SECTIONING MACHINE WITH SELF CONTAINED COOLING, AUTO GRAVITY FEED & SHUT-OFF

Item	Description
MC-600	SECTIONING SAW W/MICROMETER CROSS- FEED
<p>This Automatic Sectioning Machine combines variable speed with micrometer cross-feed for thin sectioning without deformation to the sample. A Gravity Feed System allows for a wide range of Feed Rates, Automatic Operation and Shut-Off. Internal Coolant Tank cools the blade and sprays the sample for a Cold Cut. Safety features include Low Voltage Controls and Safety Cover Auto-Shut-Off System. Heavy Duty DC Motor and Controller give blade speeds of 0-1000 rpm with a cross-sectional capacity of 1 1/2". Diamond, Borazon and Thin Abrasive Blades are used cut a wide variety of materials. Micrometer Cross-feed offers 1" of travel in thousandths for thin or repeatable sectioning. 110V / 220V</p>	



LS1500	LOW SPEED SAW W/MICROMETER CROSS- FEED
<p>This Precision Sectioning Machine offers many advantages over standard low-speed machines with Blade Speeds 0-350 r.p.m</p> <ul style="list-style-type: none"> Angle Adjustment Y 30 degrees. Radius Adjustment 360 degrees. Multiple Blade Gang Cutting with 1, 2, 3 or 4 Blades with spacers Takes 4" x .012 x 1/2" Diamond or Aluminum Oxide Blades Micrometer Positions within 5 microns of accuracy. Automatic Shut-off. 	



MARK V LABORATORY

PCB SAMPLE COUPON ROUTING MACHINES TABLE TOP & FLOOR MODEL MACHINES

Item	Description
PCR-1100	TABLE TOP PRINTED CIRCUIT ROUTER



Printed Circuit Table Router
Manufactured by Mark V Laboratory for Free Cutting of PCB Coupons from small to large boards. This model Router easily fits on a counter-top and offers the ability to cut PCB samples from the toughest Kevlar, Multi-Layer and even Component Mounted Boards. Mitered Feed Guide allows square & rectangular coupons to be cut to any size without deformation or the stress's associated with punching or other methods. The PCR-1100 features a Dust Collection Vacuum System and Safety Cover with Locator Pin. The machine comes complete with drill point upcut router bits and extra vacuum bags. 110V 10Amp

PCRB3	PCR-1100 ROUTER BITS, 3 PCS.
-------	------------------------------

FLOOR MODEL PCB ROUTER FOR LARGE PCB & FIXTURED COUPON CUTTING

Item	Description
PCR-2200	PRINTED CIRCUIT PIN TYPE ROUTER FLOOR MODEL



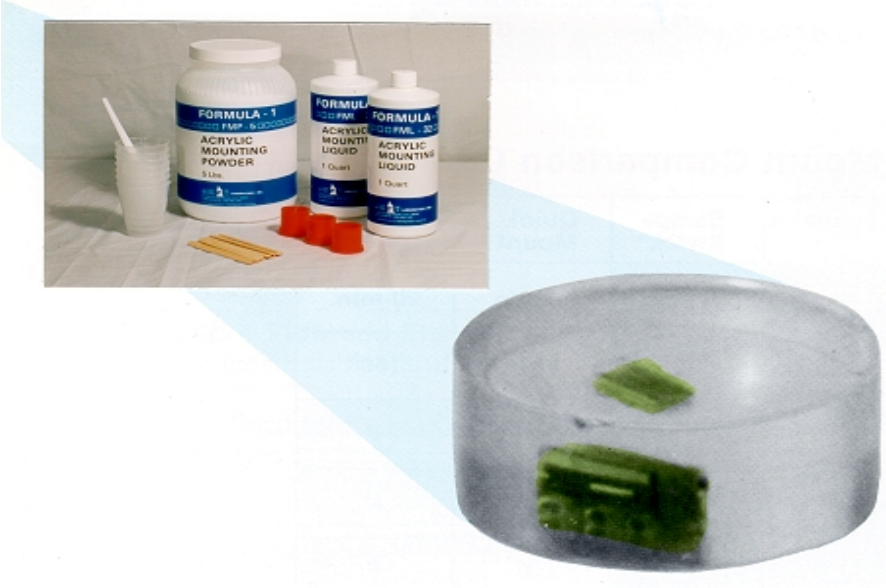
Manufactured by Mark V Laboratory, Floor Model Router for cutting PCB Coupons from small to large Printed Circuit Boards. Fixture or Free Cut test Samples from the toughest multilayer and KevLar boards. Large Delryn Work Table accepts boards up to 48 x 60 x 1/2". With one machine an operator can align, drill and route a coupon in one minute. No more punching, drilling or alignment problems. Once attached with a fixture under the machines indexing pin, the foot pedal is depressed and the appropriate drill point router bit drills the pin holes. Next the indexing pin is engaged into the route track of the fixture and the operator moves the board around the route track and the coupon is cut. The machine comes complete with a Enclosed Dust Collection Vacuum Systems, Magnified Work Lamp, Fixture and Router Bits. 110/220V.

PCRB-078	.078" ROUTER BITS (STUERS FIXTURE) 3/PKG.
PCRB-094	.094" ROUTER BITS (BUEHLER FIXTURE) 3/PKG.
PCRB-125	.125" PCR ROUTER BITS, 3/PKG.
PCR-FIX	PCR-2200 FIXTURE
PCR-VAC	REPLACEMENT VACUUM BAGS 3/PKG. F/PCR 1100/2200

MARK V LABORATORY

METALLURGICAL SAMPLE MOUNTING PRODUCTS

FORMULA-1 ACRYLIC FAST CURE MOUNTING SYSTEMS

Item	Description	MSDS
FMK-5	FORMULA 1 KIT, 5 LBS. POWDER, 2 QTS LIQUID & SUPPLIES	<p>Formula-1 Acrylic Mounting System developed to outperform all other Systems on the market, with a Cure Time of 10-15 Minutes, High Adhesion/Lowest Shrinkage Rate, High Clarity and the Lowest Exothermic Temperature at 160 Degrees F. Formula-1 is the only system that offers a Standard Method a No-Mix Method for the Best Hole or Core Filling. The FMK-5 Kit comes complete with 5 Lbs. Powder, 2 Qts. Liquid, 5 ea. Plastic Molds and Mixing Supplies.</p> 

FMK-2	FORMULA 1 KIT, 2.5 LBS. POWDER, 1 QT. LIQUID & SUPPLIES	MSDS FMP FML
FMK-25	FORMULA 1, 25 LBS. POWDER & 10 QTS. LIQUID	MSDS FMP FML
FMK-50	FORMULA 1, 50 LBS. POWDER & 20 QTS. LIQUID	MSDS FMP FML
FMK-S	FORMULA 1 SAMPLE KIT	MSDS FMP FML
FML-128	FORMULA 1, HARDENER, 1 GAL.	MSDS FMP FML
FML-32	FORMULA 1, HARDENER, 1 QT.	MSDS FML
FML-320	FORMULA 1, HARDENER, 2.5 GAL.	MSDS FML
FML-64	FORMULA 1, HARDENER, 2 QTS.	MSDS FML
FMP-10	FORMULA 1, POWDER, 10 LBS.	MSDS FMP
FMP-100	FORMULA 1, POWDER, 100 LBS.	MSDS FMP
FMP-2	FORMULA 1, POWDER, 2.5 LBS.	MSDS FMP
FMP-25	FORMULA 1, POWDER, 25 LBS.	MSDS FMP
FMP-5	FORMULA 1, POWDER, 5 LBS.	MSDS FMP
FMR-5	FORMULA 1, 5 LBS. POWDER & 2 QTS. LIQUID	MSDS FMP FML
FXK-2	FAST FORMULA, 2.5 LBS. POWDER, 1 QT. LIQUID & SUPPLIES	MSDS FXP FXL
FXK-5	FAST FORMULA, 5 LBS. POWDER, 2 QTS. LIQUID & SUPPLIES	MSDS FXP FXL
FXL-128	FAST FORMULA LIQUID, 1 GAL.	MSDS FXL
FXL-32	FAST FORMULA LIQUID, 1 QT.	MSDS FXL
FXL-320	FAST FORMULA LIQUID, 2.5 GAL.	MSDS FXL
FXL-64	FAST FORMULA LIQUID, 2 QTS.	MSDS FXL
FXP-2	FAST FORMULA POWDER, 2.5 LBS.	MSDS FXP
FXP-25	FAST FORMULA POWDER, 25 LBS.	MSDS FXP
FXP-5	FAST FORMULA POWDER, 5 LBS.	MSDS FXP
FXR-5	FAST FORMULA, 5 LBS. POWDER & 2 QTS. FAST LIQUID	MSDS FXP FXL

MARK V LABORATORY

METALLURGICAL SAMPLE MOUNTING PRODUCTS

HIGH QUALITY FAST CURE EPOXY MOUNTING SYSTEMS

Item	Description	MSDS RR RH
EZ-1	EZ MOUNT SYSTEM COMPLETE	<p>The EZ Mount System offers the best metallurgical mount possible over other cold mount & thermoset materials. This Two Part Epoxy System is Mixed by Volume, Cures in 15 Minutes to a Clear Mount, Offers Excellent Edge Retention and Grinding Properties and has No Fumes or Odor. The EZ-1 comes complete with a Hot Plate, Mixing Buret with Stand, 2 QTS Resin, 8 oz. Hardener, 5 ea. Silicon Rubber Molds and Mixing Supplies. A wide variety of Silicon Rubber Molds are available in Round and Rectangular sizes. See RM Rubber Molds.</p>



Item	Description	MSDS RR RH
PCZ-1	EZ MOUNT SYSTEM W/ VACUUM OVEN	<p>Two Part Epoxy Mounting System for PCB's and other hard to fill specimens that require the best filling, edge retention and grinding properties available. This Two Part Epoxy System is the same as the EZ Mount System with Volumetric mixing. 15 min. cure and a clear mount accept that it comes with a Vacuum Oven instead of a Hot Plate. By drawing a slight vacuum at temperature (160F) the smallest holes, cracks and crevices are easily filled. The System comes with 8 x 10 x 8" Vacuum Oven with 76 to 0 cm Hg Guage, Temperature Range of 80-300F, Vacuum Pump & Valve Systems, Mixing Buret, 2 Qts Resin, 8oz. Hardener, 5 ea. Rubber Molds and Mixing Supplies. 110V.</p>



VACUUM BELL JARS AND PUMP SYSTEMS

Item	Description	Price
VIS/12	VACUUM SYSTEM W/12" JAR & PUMP	
VIS/8	VACUUM SYSTEM W/8" JAR & PUMP	

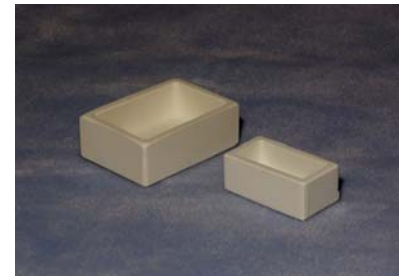


MARK V LABORATORY

METALLURGICAL SAMPLE MOUNTING PRODUCTS

HIGH QUALITY FAST CURE EPOXY MOUNTING SUPPLIES & RUBBER MOLDS

Item	Description	
RH-128	EZ MOUNT HARDENER, 1 GAL.	MSDS RH
RH-16	EZ MOUNT HARDENER, 16 OZ	MSDS RH
RH-32	EZ MOUNT HARDENER, 32 OZ.	MSDS RH
RH-4	EZ MOUNT HARDENER, 4 OZ.	MSDS RH
RH-8	EZ MOUNT HARDENER, 8 OZ.	MSDS RH
RR128	EZ MOUNT RESIN, 1 GAL.	MSDS RR
RR32	EZ MOUNT RESIN, 1QT.	MSDS RR
RR64	EZ MOUNT RESIN, 2QTS.	MSDS RR
RR640	EZ MOUNT RESIN, 5 GAL.	MSDS RR
RRH128	EZ RESIN GAL. W/ HARDENER 16 OZ.	MSDS RR RH
RRH64	EZ RESIN 2QTS. W/ HARDENER 8 OZ.	MSDS RR RH
RM1	RUBBER MOLDS 1", 10/PKG.	
RM12	RUBBER MOLDS, 1-1/4", 10/PKG.	
RM15	RUBBER MOLDS, 1-1/2", 10/PKG.	
RM2	RUBBER MOLDS, 2", 5/PKG.	
RM225X1	RUBBER MOLDS, 2.25" X 1", 5/PKG.	
RM3	RUBBER MOLD 3", EA.	
RM3X2	RUBBER MOLD 3" X 2", EA.	
RM5	RUBBER MOLD 5", EA.	
RM5X125	RUBBER MOLD 5" X 1.25", EA.	
RMC-12	PC 3 COUPON RUBBER MOLDS, 1-1/4" 10/PKG.	
RMC-15	PC 3 COUPON RUBBER MOLDS, 1-1/2", 10/PKG.	



METALLURGICAL SAMPLE MOUNTING PRODUCTS

QUIC-KIT ACRYLIC 1 MINUTE CURE MOUNTING SYSTEM

Item	Description	
KW-1	QUIC KIT SET, A & B LIQUIDS W/80 MOUNTING PLATES	MSDS KWA KWB



Quick Kit Set, A&B Liq., 80 PLTS

One Minute Mounting System for PCB Coupons utilizes a 2 part Acrylic Liquid System and 2 Acrylic Mounting Plates to form sandwich type of mount with the Circuit Board in the middle. The first plate is placed on the mounting post of the Kits Box or in the option. Teflon Fixture, a few drops of Liquid A are applied to the plate, the coupon is then set on the plate, a few drops of Liquid B are applied to the coupon and then the top plate is set onto the coupon. In 1 Minute the Mount has Cured and is ready for Grinding. The average finished mount is about 1/2" thick, is easy to grip and reduces Grinding and Polishing Time. Because of the viscosity of the two liquid system even the smallest hole is easily filled.

Quick Kit Set, A&B Liq., 80 PLTS

KW-A	#1 LIQUID, QUIC KIT FILLER RESIN	MSDS KWA
KW-B	#2 LIQUID, QUIC KIT HARDENER	MSDS KWB
KW-FX	QUIC KIT MULTI MOUNT FIXTURE	
KW-P	QUIC KIT MOUNTING PLATES, 80EA.	

MARK V LABORATORY

METALLURGICAL SAMPLE MOUNTING PRODUCTS

PLASTIC MOUNTING MOLDS, RELEASES, CLIPS & SUPPLIES

Item	Description	
MS122	DRY AEROSOL MOLD RELEASE, 11 OZ.	MSDS MS122
MS145W	LIQUID MOLD RELEASE, 8OZ	MSDS MS145
MS220	AERO DUSTER	MSDS MS220
PCMF-100	SQUARE MOUNTING FORMS 100/PKG.	
PCMF-1000	SQUARE MOUNTING FORMS 1000/PKG.	
PCMT	SQUARE MOUNTING TRAY	
PM1	PLASTIC MOLDS 1" 12/PKG	
PM12	PLASTIC MOLDS 1-1/4", 12/PKG	
PM15	PLASTIC MOLDS 1-1/2", 12/PKG	
PMC100	PAPER MIXING CUPS. 100/PKG	
PMC500	PAPER MIXING CUPS, 500/PKG.	
RF1	1" PHENOLIC RING FORMS, 10/PKG.	
RF1-100	1" PHENOLIC RING FORMS, 100/PKG.	
RF12	1-1/4" PHENOLIC RING FORMS, 10/PKG.	
RF12-100	1-1/4" PHENOLIC RING FORMS, 100/PKG.	
RF15	1-1/2" PHENOLIC RING FORMS, 10/PKG.	
RF15-100	1-1/2" PHENOLIC RING FORMS, 100/PKG.	
RFT-12	TEFLON 1.25" 8 RING FORM MOUNT BASE	
RFT-15	TEFLON 1.5" 8 RING FORM MOUNT BASE	
SC2	PLASTIC MIXING CUPS, 4 OZ., 25/PKG.	
SC4	PLASTIC MIXING CUPS, 4 OZ., 50/PKG.	
SMR	SILICON SPRAY MOLD RELEASE, 5 OZ.	
SRF-12	1-1/4 PHENOLIC FLAGE MOLD FOR STRUERS 12/PKG.	
SRT-12	TEFLON 1.25" FLAGE FORM MOUNT BASE	
SS-100	MIXING STICKS 100/PKG.	
SS-500	MIXING STICKS 500/PKG.	
METALLURGICAL SAMPLE MOUNTING CLIPS		
C-1000	MET CLIPS, METAL MOUNTING CLIPS, 1000/PKG.	
C-101	MET CLIPS, METAL MOUNTING CLIPS, 100/PKG.	
CCP-100	COLORED PLASTIC MOUNTING CLIPS 100/PKG.	
CCP-1000	COLORED PLASTIC MOUNTING CLIPS 100/PKG.	
MC-P	PLASTIC MOUNT CLIPS, 100/PKG	
MC-P1000	PLASTIC MOUNT CLIPS, 1000/PKG	
MET-X ACRYLIC & POLYESTER MOUNTING SYSTEMS		
ML-128	MET-X HARDENER, 1 GAL.	MSDS ML
ML-32	MET-X HARDENER, 1 QT.	MSDS ML
MP-25	MET-X MOUNTING POWDER, 25 LBS.	MSDS MP
MP-5	MET-X MOUNTING POWDER, 5 LBS.	MSDS MP
MP-50	MET-X MOUNTING POWDER, 50 LBS.	MSDS MP
MPK-2	MET-X MOUNTING KIT, 2.5LBS. POWDER & 1 QT. LIQUID	MSDS MP ML
MPK-25	MET-X MOUNTING KIT, 25LBS. POWDER & 10 QTS. LIQUID	MSDS MP ML
MPK-5	MET-X MOUNTING KIT, 5 LBS. POWDER & 2 QTS. LIQUID	MSDS MP ML
PMH	POLYESTER HARDENER 1/2 OZ, EA.	MSDS PMH
PMK-5	POLYESTER MOUNT KIT, W/ MOLDS & SUPPLIES	MSDS PMR PMH
PMR	POLYESTER RESIN, 1 QT, EA.	MSDS PMR



MARK V LABORATORY

COLORED & GLASS FILLED PHENOLIC MOUNTING POWDERS

Item	Description	
BUT-5	BLACK FINA-MET POWDER, 5LBS.	MSDS UT
DPB-1	PHENOLIC GLASS FILL, COARSE, 5 LB.	MSDS UT
DPB-2	BLUE DIALLYL PHTHALATE MOUNTING POWDER, MEDIUM, 5LBS.	MSDS UT
DPB-3	BLUE DIALLYL PHTHALATE MOUNTING POWDER, FINE, 5 LB.	MSDS UT
GFE-1	EPOXY MOUNTING POWDER, 4 LBS.	MSDS GFE
GFE-25	EPOXY MOUNTING POWDER, 25LBS.	MSDS GFE
MPB	BLACK PHENOLIC MOUNTING POWDER, 5 LBS.	MSDS PHENOLIC
MPB-25	BLACK PHENOLIC MOUNTING POWDER, 25 LBS.	MSDS PHENOLIC
MPBR	BROWN PHENOLIC MOUNTING POWDER, 5 LBS.	MSDS PHENOLIC
MPG	GREEN PHENOLIC MOUNTING POWDER, 5 LBS.	MSDS PHENOLIC
MPG-25	GREEN PHENOLIC MOUNTING POWDER, 25 LBS.	MSDS PHENOLIC
MPGB	GREEN & BROWN PHENOLIC MOUNTING POWDER, 5 LBS.	MSDS PHENOLIC
MPGB25	GREEN & BROWN PHENOLIC POWDER, 25 LBS	MSDS PHENOLIC
MPR	RED PHENOLIC MOUNTING POWDER, 5 LBS.	MSDS PHENOLIC
MPR-25	RED PHENOLIC MOUNTING POWDER, 25 LBS.	MSDS PHENOLIC
TR-1	TRANSOPTIC MOUNTING POWDER, 5LBS...	MSDS TR
TR-25	TRANSOPTIC MOUNTING POWDER, 25 LBS.	MSDS TR
UT-25	FINA-MET POWDER, 25 LBS	MSDS UT
UT-5	FINA-MET POWDER, 5 LBS.	MSDS UT
UT-50	FINA-MET POWDER, 50LBS.	MSDS UT



Fina-Met Powder, 5 LB.

Short Glass Filled Phenolic offers the Best Edge Retention and Grinding Properties of any thermoset powder.

Colored Phenolic & Transoptic Thermoset Powders are used in Mounting Press's for specimen sample mounting. Mounts are made at 150 degrees C at pressures between 3000-4200 psi. The different colors offer contrast to the parts being mounted when examined under a microscope. Transoptic Powder offers a Optically Clear Mold.

AUTOMATIC METALLURGICAL MOUNTING PRESS

Item	Description
METPRESS-A	AUTOMATIC MOUNTING PRESS WITH MOLD

Automatic Mounting Press, fully automatic microprocessor controlled operation, touch pad front panel controls and digital display of heating time, molding temperature, cooling temperature, ram up/down, auto/manual cooling, cycle start/stop and a direct reading pressure gauge. Molding pressure up to 310 Bar, molding temperature up to 240°C, thermostatically controlled heating power of 1400 W, automatic cooling cycle and an audible signal for end of cycle. Last molding parameter settings retained in memory. Supplied with all necessary hoses, fittings, power cord and instruction manual, selectable mold sizes from 25 to 50mm. 220V



MARK V LABORATORY

METALLURGICAL GRINDER/POLISHER MACHINES

SINGLE & DUAL WHEEL MACHINES WITH & 2 SPEED & VARIABLE DRIVES

Item	Description
56006	MECAPOL 2B2, 8" WHEEL, 2 SPEED (150+300 RPM)
56011	MECAPOL 2BVV, 8" WHEEL, VARIABLE (0-500 RPM) SPEED



Mecapol 2B2, 8" Wheel, 2 Spd., EA. Manufactured by Mark V Laboratory the Mecapol 2B Series Grinder/Polisher features rugged all steel construction, Stainless Steel Arbor Shaft with no-maintenance SKF Ball Bearing Assembly and Poly-V Belt Drive. Kydex Bowl and Drain are acid resistant. Flexible Coolant Hose and Ball Valve can direct water spray anywhere on the wheel. Two types of 8" Wheels are available, the one piece 56053 PVC Wheel with Taper or the two part Quick-Change Almag System. The System includes one 56051 Aluminum Wheel with Taper and Drive Pegs and 56053 PVC Flat Wheels with Drive Holes, this set-up is ideal for multiple step polishing. The machine comes complete with a 56053 Wheel, Splash Ring and GB-8 Grit-Grabber Double-Sided Adhesive Pads for Quick-Changing of Grinding Disc's. Options include 56054 Paper Holding Band, Almag System and 56055 Cover Lid. 110V/60 Hz. 220V/50Hz. available.

56021	MECAPOL 3B2, 8",2 WHEEL, 2 SPEED
56027	MECAPOL 3BVV, 8", 2 WHEEL, VARI. SPEED



The Mecapol 3B2 Dual Wheel Grinder/Polisher features rugged all steel construction, Stainless Steel Arbor Shafts with no-maintenance SKF Ball Bearings and Poly-V Belt Drive. Kydex Bowl & Drain are acid resistant. Flexible Coolant Hoses with Ball Valves direct water spray. Two types of 8" Wheels are available, the one piece 56053 PVC Wheel with Taper or the two part Quick-Change Almag System. The System includes one 56051 Aluminum Wheel with Taper and Drive Pegs and 56052 PVC Flat Wheels with Drive Holes, this set-up is ideal for multiple step polishing. The machine comes with two 56053 Wheels, Splash Rings and GB-8 Grit-Grabber Double-Sided Pads for Quick-Changing of Grinding Disc's. Options include 55054 Paper Holding Bands, Almag System and 56055 Cover Lids. 110V 60Hz. 220V 50Hz. available.

56029	MECAPOL 6B2, 10",2 WHEEL, 2 SPEED
56030	MECAPOL 6BVV, 8", 2 WHEEL, VARI. SPEED
56051	ALUMUMIN DRIVE PLATE F/ FLAT WHEELS, EA.
56052	PVC 8" FLAT WHEEL, EA.
56053	PVC 8" WHEEL W/TAPER, EA
56054	PAPER HOLDING RING F/ 8" WHEEL, EA.

MARK V LABORATORY
18 KRIPES RD. EAST GRANBY,CT 06026
800-243-9776 860-653-7201 fax 860-653-4087


MARK V LABORATORY

FLOOR MODEL GRINDER/POLISHER TABLES SINGLE, DUAL & TRIPLE WHEEL MACHINES WITH & 2 SPEED & VARIABLE DRIVES

Item	Description	
MET-22	POLISHING TABLE, DUAL 8" WHEEL, 2 SPEED	 <p>MET-22 Grinder/Polisher Table with 2 Wheel, 2 Speed Motors. Manufactured by Mark V Lab the METPOL22 8" Dual Wheel Grinder/Polisher Table is built from a Two Door Steel Cabinet 48"Wx30"Dx36"H and Laminated Counter-top with Backsplash. Assembled with Heavy Duty Components such as Two 2 Speed 1/3 hp. Air-cooled GE Motors, Stainless Steel Arbor Shafts with no-maintenance SKF Ball Bearing Assemblies, Kydex acid resistant Bowls and Drain System, Flexible Coolant Hoses with Ball Valves and Poly-V Belt Drives with Wheel Speeds of 150 & 300rpm. The MET-22 comes complete with two 56053 8" PVC Wheels, GB-8 Grit Grabbers and Splash Rings. Options include Almag Quick-Change Wheel System, 56054 Paper Holding Bands and 56055 Cover Lids, MET-S10 & MET-P/O Sinks, MET-CHF Gooseneck Faucet and ME-EOS Ground Fault Outlets. 110V 60 Hz. 220V 50 Hz.</p>

MET-25	POLISHING TABLE, DUAL 8" WHEEL, VARIABLE SPEED
MET-32	POLISHING TABLE, TRIPLE 8" WHEEL, 2 SPEED
MET-35	POLISHING TABLE, TRIPLE 8" WHEEL, VARIABLE SPEED
MET-CHF	HOT & COLD GOOSENECK LAB FAUCET
MET-EOS	ELECTRICAL OUTLET STRIP 110V
MET-P/O	ACID RESISTANT POLYPRO SINK 10" X 10" X 7.5"
MET-P/O 12	ACID RESISTANT POLYPRO SINK 12" X 12" X 7.5"
MET-S10	STAINLESS STEEL SINK 10" X 12"
MET-SID	SEDIMENT INTERCEPTOR TANK 5 GALLON
MET-TRP	ACID RESISTANT SINK TRAP W/BOWL

WHEELS AND ACCESSORIES FOR MARK V GRINDER/POLISHERS

56051	ALUMUMIN DRIVE PLATE F/ 56052 WHEEL, EA.	
56052	PVC 8" FLAT WHEEL, EA. FOR 56051	
56053	PVC 8" WHEEL W/TAPER, EA	
56054	PAPER HOLDING RING F/ 8" WHEEL, EA.	
56055	COVER LID FOR 2B/3B, EA.	
56056	PVC 9" FLAT WHEEL, EA. FOR 56051	
56057	PVC 10" FLAT WHEEL, EA. FOR 56051	
GB-8	8" GRIT-GRABBER DISCS, 10/PKG.	
GB-9	9" GRIT-GRABBER DISCS, 10/PKG.	
GB-10	10" GRIT-GRABBER DISCS, 10/PKG.	

MARK V LABORATORY

METALLURGICAL S/C GRINDING DISCS, SHEETS, STRIPS & ROLLS SILICON CARBIDE DISCS WITH PLAIN BACK IN 8" & 9" DIAMETERS



Item	Description
D8N1000	8" 3M S/C DISCS, 1000G, 100/PKG.
D8N120	8" S/C DISCS, 120G, 100/PKG.
D8N1200	8" 3M S/C DISCS, 1200G, 100/PKG.
D8N1500	8" 3M S/C DISCS, 1500G, 100/PKG.
D8N180	8" S/C DISCS, 180G, 100/PKG.
D8N2000	8" 3M S/C DISCS, 2000G, 100/PKG.
D8N240	8" S/C DISCS, 240G, 100/PKG.
D8N320	8" S/C DISCS, 320G, 100/PKG.
D8N400	8" S/C DISCS, 400G, 100/PKG.
D8N60	8" S/C DISCS, 60G, 100/PKG.
D8N600	8" S/C DISCS, 600G, 100/PKG.
D8N80	8" S/C DISCS, 80G, 100/PKG.
D8N-AS	8" S/C DISCS ASSORTED:120,240,400 & 600G, 25/ EA.
D8NAS/1000-2000	8" S/C DISCS ASSORTED:1000, 1200, 1500 & 2000G, 25/EA.
D9120	9" S/C DISCS, 120G, 100/PKG.
D9180	9" S/C DISCS, 180G, 100/PKG.
D9240	9" S/C DISCS, 240G, 100/PKG.
D9320	9" S/C DISCS, 320G, 100/PKG.
D9400	9" S/C DISCS, 400G, 100/PKG.
D9600	9" S/C DISCS, 600G, 100/PKG.
D980	9" S/C DISCS, 80G, 100/PKG.

SILICON CARBIDE DISCS WITH PLAIN BACK IN 8" X 1/2" & 12" X 1/2" DIAMETERS

Item	Description
D85060	8" X 1/2" S/C DISCS, 60G, 100/PKG.
D85120	8" X 1/2" S/C DISCS, 120G, 100/PKG.
D85180	8" X 1/2" S/C DISCS, 180G, 100/PKG.
D85240	8" X 1/2" S/C DISCS, 240G, 100/PKG.
D85320	8" X 1/2" S/C DISCS, 320G, 100/PKG.
D85400	8" X 1/2" S/C DISCS, 400G, 100/PKG.
D85600	8" X 1/2" S/C DISCS, 600G, 100/PKG.
D125060	12" X 1/2" S/C DISCS, 60G, 100/PKG.
D125120	12" X 1/2" S/C DISCS, 120G, 100/PKG.
D125180	12" X 1/2" S/C DISCS, 180G, 100/PKG.
D125240	12" X 1/2" S/C DISCS, 240G, 100/PKG.
D125320	12" X 1/2" S/C DISCS, 320G, 100/PKG.
D125400	12" X 1/2" S/C DISCS, 400G, 100/PKG.
D125600	12" X 1/2" S/C DISCS, 600G, 100/PKG.

MARK V LABORATORY

SILICON CARBIDE DISCS WITH PLAIN BACK IN 10", 12" & 14" DIAMETERS

Item	Description
D101000	10" 3M S/C DISCS, 1000G, 100/PKG.
D10120	10" S/C DISCS, 120G, 100/PKG.
D101200	10" 3M S/C DISCS, 1200G, 100/PKG.
D101500	10" 3M S/C DISCS, 1500G, 100/PKG.
D10180	10" S/C DISCS, 180G, 100/PKG.
D102000	10" 3M S/C DISCS, 2000G, 100/PKG.
D10240	10" S/C DISCS, 240G, 100/PKG.
D10320	10" S/C DISCS, 320G, 100/PKG.
D10400	10" S/C DISCS, 400G, 100/PKG.
D1060	10" S/C DISCS, 60G, 100/PKG..
D10600	10" S/C DISCS, 600G, 100/PKG.
D1080	10" S/C DISCS, 80G, 100/PKG.
D10-AS	10" S/C DISCS ASSORTED: 120,240,320 & 600 25/EA.
D10AS-50	10" S/C DISCS ASSORTED:120,240,400,600 & 1000G, 50/EA.
D121000	12" 3M S/C DISCS, 1000G, 100/PKG.
D12120	12" S/C DISCS, 120G, 100/PKG.
D121200	12" 3M S/C DISCS, 1200G, 100/PKG.
D121500	12" 3M S/C DISCS, 1500G, 100/PKG.
D12180	12" S/C DISCS, 180G, 100/PKG
D122000	12" 3M S/C DISCS, 2000G, 100/PKG.
D12240	12" S/C DISCS, 240G, 100/PKG.
D12320	12" S/C DISCS, 320G, 100/PKG.
D12400	12" S/C DISCS, 400G, 100/PKG.
D1260	12" S/C DISCS, 60G, 100/PKG.
D12600	12" S/C DISCS, 600G, 100/PKG.
D1280	12" S/C DISCS, 80G, 100/PKG.
D141000	14" 3M S/C DISCS, 1000G, 100/PKG.
D14120	14" 3M S/C DISCS, 120G, 100/PKG.
D141200	14" 3M S/C DISCS,1200G, 100/PKG
D141500	14" 3M S/C DISCS, 1500G, 100/PKG
D14180	14" S/C DISCS, 180G, 100/PKG.
D142000	14" 3M S/C DISCS, 2000G, 100/PKG
D14240	14" S/C DISCS, 240G, 100/PKG.
D14320	14" S/C DISCS, 320G, 100/PKG
D14400	14" S/C DISCS, 400G, 100/PKG.
D1460	14" S/C DISCS, 60G, 100/PKG
D14600	14" S/C DISCS, 600G, 100/PKG
D1480	14" S/C DISCS, 80G, 100/PKG.

SILICON CARBIDE DISCS WITH ADHESIVE BACK IN 8" DIAMETER

Item	Description
AD8-12	8" PSA, S/C DISCS, 120G, 100/PKG.
AD8-18	8" PSA, S/A DISCS, 180G, 100/PKG.
AD8-24	8" PSA, S/C DISCS, 240G, 100/PKG.
AD8-32	8" PSA, S/C DISCS, 320G, 100/PKG.
AD8-40	8" PSA, S/C DISCS, 400G, 100/PKG.
AD8-6	8" PSA, S/C DISCS, 60G, 100/PKG.

MARK V LABORATORY

GRIT GRABBER DISCS WITH 2 SIDED ADHESIVE BACK IN 8", 9", 10", 12" & 14" GB DISCS & GBS SPRAY ALLOW MULTIPLE RELEASES OF PLAIN BACK GRINDING DISCS

Item	Description
GB-10	10" GRIT-GRABBER DISCS, 10/PKG.
GB-12	12" GRIT-GRABBER DISCS, 10/PKG.
GB-8	8" GRIT-GRABBER DISCS, 10/PKG.
GB-9	9" GRIT-GRABBER DISCS, 10/PKG.
GBS-6	REMOUNTABLE DISC SPRAY ADHESIVE,..6 OZ CAN



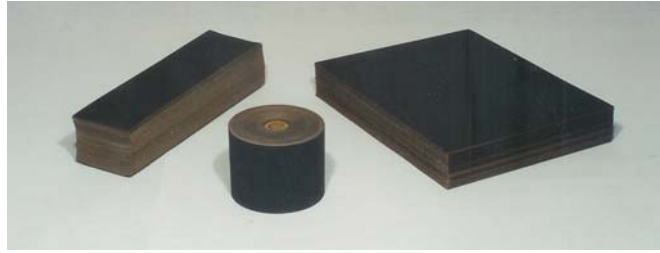
SILICON CARBIDE DISCS WITH ADHESIVE BACK IN 2 7/8", 12" & 14" DIAMETERS

Item	Description
D2-18	2-7/8" S/C DISCS, PSA, 180G, 100/PKG.
D2-24	2-7/8" S/C DISCS, PSA, 240G, 100/PKG.
D2-32	2-7/8" S/C DISCS, PSA, 320G, 100/PKG.
D2-40	2-7/8" S/C DISCS, PSA, 400G, 100/PKG.
D2-60	2-7/8" S/C DISCS, PSA, 600G, 100/PKG.
D2-AS	2-7/8" S/C DISCS ASSORTED: 180,240,320,400 & 600G, 25 EA.
AD12120	12" PSA S/C DISCS, 120G, 100/PKG.
AD12180	12" PSA S/C DISCS, 180G, 100/PKG.
AD12240	12" PSA, S/C DISCS, 240G, 100/PKG.
AD12320	12" PSA, S/C DISCS, 320G, 100/PKG.
AD12400	12" PSA, S/C DISCS, 400G, 100/PKG.
AD1260	12" PSA, S/C DISCS, 60G, 100 PKG.
AD12600	12" PSA, S/C DISCS, 600G, 100/PKG.
AD1280	12" PSA, S/C DISCS, 80G, 100/PKG.
AD14-12	14" PSA, S/C DISCS, 120G, 100/PKG.
AD14-18	14" PSA, S/C DISCS, 180G, 100/PKG.
AD14-24	14" PSA, S/C DISCS, 240G, 100/PKG.
AD14-32	14" PSA, S/C DISCS, 320G, 100/PKG.
AD14-40	14" PSA, S/C DISCS, 400G, 100/PKG.
AD14-6	14" PSA, S/C DISCS, 60G, 100/PKG.
AD14-60	14" PSA, S/C DISCS, 600G, 100/PKG.

SILICON CARBIDE 3" X 11" STRIPS WITH ADHESIVE BACK

Item	Description
AS3-12	3"X11" PSA, S/C STRIPS, 120G, 100/PKG.
AS3-24	3"X11" PSA, S/C STRIPS, 240G, 100/PKG.
AS3-32	3"X11" PSA, S/C STRIPS, 320G, 100/PKG.
AS3-40	3"X11" PSA, S/C STRIPS, 400G, 100/PKG.
AS3-60	3"X11" PSA, S/C STRIPS, 600G, 100/PKG.
AS3-AS	3"X11" ASSORTED STRIPS PSA: 240, 320, 400 & 600 GRITS

MARK V LABORATORY



9" X 11" PLAIN BACK SILICON CARBIDE SHEETS

Item	Description
S9060	9" X 11" S/C SHEETS, 60G, 100/PKG.
S9120	9" X 11" S/C SHEETS, 120G, 100/PKG.
S9180	9" X 11" S/C SHEETS, 180G, 100.PKG.
S9240	9" X 11" S/C SHEETS, 240G, 100/PKG.
S9320	9" X 11" S/C SHEETS, 320G, 100/PKG.
S9400	9" X 11" S/C SHEETS, 400G, 100 PKG.
S9600	9" X 11" S/C SHEETS, 600G, 100/PKG.
S980	9" X 11" S/C SHEETS, 80G, 100/PKG.

SILICON CARBIDE PLAIN BACK ROLLS IN 3" & 3 7/8" WIDTHS

Item	Description
R3-12	3" X 75' S/C ROLL, 120G, EA.
R3-18	3" X 75' S/C ROLL, 180G, EA.
R3-24	3" X 75' S/C ROLL, 240G, EA.
R3-32	3" X 75' S/C ROLL, 320G, EA.
R3-40	3" X 75' S/C ROLL, 400G, EA.
R3-60	3" X 75' S/C ROLL, 600G, EA.
R37-24	3-7/16" X 75' S/C ROLL, 240G
R37-32	3-7/16" X 75' S/C ROLL, 320G
R37-40	3-7/16" X 75' S/C ROLL, 400G
R37-60	3-7/16" X 75' S/C ROLL, 600G

METALLURGICAL 4"X36" GRINDING BELTS IN S/C, A/O & ZIRCONIUM OXIDE

Item	Description
AMB120G	4"X36" A/O BELTS, 120G, 10/PKG.
AMB180G	4"X36" A/O BELTS, 180G, 10/PKG.
AMB240G	4"X36" A/O BELTS, 240G, 10/PKG.
AMB320G	4"X36" A/O BELTS, 320G, 10/PKG.
AMB50G	4"X36" A/O BELTS, 50G, 10/PKG.
AMB80G	4"X36" A/O BELTS, 80G, 10/PKG.
MB120G	4" X 36" S/C BELTS, 120G, 10/PKG.
MB180G	4" X 36" S/C BELTS, 180G, 10/PKG.
MB240G	4" X 36" S/C BELTS, 240G, 10/PKG.
MB320G	4" X 36" S/C BELTS, 320G, 10/PKG.
MB400G	4" X 36" S/C BELTS, 400G, 10/PKG.
MB50G	4" X 36" S/C BELTS, 50G, 10/PKG.
MB600G	4" X 36" S/C BELTS, 600G, 10/PKG.
MB60G	4" X 36" S/C BELTS, 60G, 10/PKG.
MB80G	4" X 36" S/C BELTS, 80G, 10/PKG.
ZB120G	4" X 36" ZIRCONIA BELTS, 120G, 5/PKG.
ZB180G	4" X 36" ZIRCONIA BELTS, 180G, 5/PKG.
ZB60G	4" X 36" ZIRCONIA BELTS, 60G, 5/PKG.
ZB80G	4" X 36" ZIRCONIA BELTS, 80G, 5/PKG.



MARK V LABORATORY

FLEX METAL BONDED DIAMOND GRINDING DISCS
ADHESIVE BACKED IN 8" & 12" DIAMETERS FOR GRINDING TOUGH MATERIALS



Item	Description
DFX10A-125	FLEX DIAMOND DISC 10" PSA, 125M
DFX12A-10	FLEX DIAMOND DISCS 12" PSA 10M
DFX12A-125	FLEX DIAMOND DISCS 12" PSA 125M
DFX12A-20	FLEX DIAMOND DISC 12" PSA 20M
DFX12A-250	FLEX DIAMOND DISC 12" PSA 250M
DFX12A-40	FLEX DIAMOND DISC 12" PSA 40M
DFX12A-74	FLEX DIAMOND DISC 12" PSA 74M
DFX8A-10	FLEX DIAMOND DISC 8" PSA 10M
DFX8A-125	FLEX DIAMOND DISC 8" PSA 125M
DFX8A-20	FLEX DIAMOND DISC 8" PSA 20M
DFX8A-250	FLEX DIAMOND DISC 8" PSA 250M
DFX8A-40	FLEX DIAMOND DISC 8" PSA 40M
DFX8A-74	FLEX DIAMOND DISC 8" PSA 74M

3M LAPPING FILM IN DISCS, SHEETS, STRIPS & ROLLS
ADHESIVE & PLAIN BACK FILMS IN ALUMINUM & SILICON OXIDES, & DIAMOND

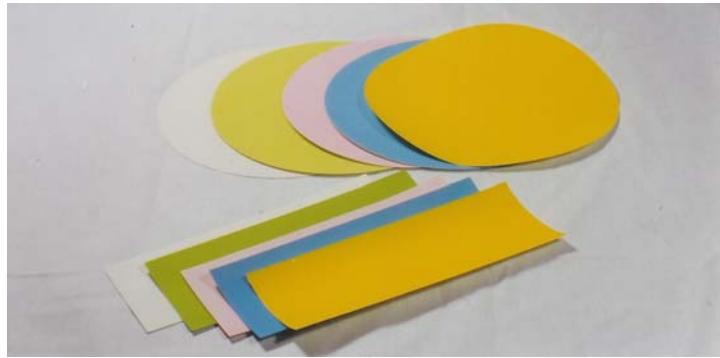


Item	Description
FA380.3-100	A/O FILM 3" X 8", 0.3M, 100/PKG.
FA381-100	A/O FILM 3" X 8", 1M, 100/PKG.
FA3812-100	A/O FILM 3" X 8", 12M, 100 PKG.
FA3830-100	A/O FILM 3" X 8", 30M, 100/PKG.
FA383-100	A/O FILM 3" X 8", 3M, 100/PKG.
FA3840-100	A/O FILM 3" X 8", 40M, 100/PKG.
FA389-100	A/O FILM 3" X 8", 9M, 100/PKG.
FA38A0.3-100	A/O FILM 3" X 8", PSA, 0.3M,100/PKG.
FA38A1-100	A/O FILM 3" X 8", PSA, 1M, 100/PKG.
FA38A12-100	A/O FILM 3" X 8", PSA, 12M, 100/PKG.
FA38A30-100	A/O FILM 3" X 8", PSA, 30M, 100/PKG.
FA38A3-100	A/O FILM 3" X 8", PSA, 3M, 100/PKG.
FA38A40-100	A/O FILM 3" X 8", PSA, 40M, 100/PKG.
FA38A9-100	A/O FILM 3" X 8", PSA, 9M 100/PKG....

MARK V LABORATORY
18 KRIPES RD. EAST GRANBY,CT 06026
800-243-9776 860-653-7201 fax 860-653-4087

MARK V LABORATORY

**3M LAPPING FILM IN DISCS, SHEETS, STRIPS & ROLLS
ADHESIVE & PLAIN BACK FILMS IN ALUMINUM & SILICON OXIDES, & DIAMOND**



Item	Description
FA4A0.3-100	A/O FILM 4", PSA, 0.3M, 100/PKG.
FA4A1-100	A/O FILM 4", PSA, 1M, 100/PKG.
FA4A12-100	A/O FILM 4", PSA, 12M, 100 PKG.
FA4A30-100	A/O FILM 4", PSA, 30M, 100 PKG.
FA4A3-100	A/O FILM 4", PSA, 3M, 100/PKG.
FA4A40-100	A/O FILM 4", PSA, 40M, 100/PKG.
FA4A9-100	A/O FILM 4", PSA, 9M, 100 PKG.
FA80.3-100	A/O FILM 8" X NH, 0.3M, 100/PKG.
FA81-100	A/O FILM 8" X NH, 1M, 100/PKG.
FA812-100	A/O FILM 8" X NH, 12M, 100/PKG.
FA830-100	A/O FILM 8" X NH, 30M, 100/PKG.
FA83-100	A/O FILM 8" X NH, 3M, 100/PKG.
FA840-100	A/O FILM 8" X NH, 40M, 100/PKG.
FA89-100	A/O FILM 8" X NH, 9M, 100/PKG.
FA8A0.3-100	A/O FILM 8", PSA, 0.3M, 100/PKG.
FA8A1-100	A/O FILM 8", PSA, 1 M, 100/PKG.
FA8A12-100	A/O FILM 8", PSA, 12M,100/PKG.
FA8A30-100	A/O FILM 8", PSA, 30M, 100/PKG.
FA8A3-100	A/O FILM 8", PSA, 3M, 100/PKG.
FA8A40-100	A/O FILM 8", PSA, 40M, 100/PKG.
FA8A9-100	A/O FILM 8", PSA, 9M, 100/PKG.
FA9110.3-100	A/O FILM 9" X 11", 0.3M, 100/PKG.
FA9111-100	A/O FILM 9" X 11", 1M, 100/PKG.
FA91112-100	A/O FILM 9" X 11", 12M, 100/PKG.
FA91130-100	A/O FILM 9" X 11", 30M, 100/PKG.
FA9113-100	A/O FILM 9" X 11", 3M, 100/PKG.
FA91140-100	A/O FILM 9" X 11", 40M, 100/PKG.
FA9119-100	A/O FILM 9" X 11", 9M, 100/PKG.
FD360.5-10	DIAMOND FILM 3" X 6", 0.5M, 10/PKG.
FD361-10	DIAMOND FILM 3" X 6", 1M, 10/PKG.
FD363-10	DIAMOND FILM 3" X 6", 3M, 10/PKG.
FD366-10	DIAMOND FILM 3" X 6", 6M, 10/PKG.
FD369-10	DIAMOND FILM 3" X 6", 9M, 10/PKG.
FD660.5-5	DIAMOND FILM 6" X 6", 0.5M 5/PKG.
FD661-5	DIAMOND FILM 6" X 6", 1M, 5/PKG.
FD663-5	DIAMOND FILM 6" X 6", 3M, 5/PKG.
FD666-5	DIAMOND FILM 6" X 6", 6M, 5/PKG.
FD669-5	DIAMOND FILM 6" X 6", 9M, 5/PKG.

MARK V LABORATORY

ALUMINA & ALUMINUM OXIDE POLISHING & GRINDING COMPOUNDS AVAILABLE IN SLURRIES & POWDERS

Item	Description
AS05	ALUMINA SUSPENSION, .05 MICRON, 6 OZ.
AS05-128	ALUMINA SUSPENSION, .05 MICRON, 1 GAL.
AS05-32	ALUMINA SUSPENSION, .05 MICRON, 32 OZ.
AS1	ALUMINA SUSPENSION, 1 MICRON, 6 OZ.
AS1-128	ALUMINA SUSPENSION, 1 MICRON, 1 GAL.
AS1-32	ALUMINA SUSPENSION, 1 MICRON, 32 OZ.
AS3	ALUMINA SUSPENSION, 0.3 MICRON, 6 OZ.
AS3-128	ALUMINA SUSPENSION, 0.3 MICRON, 1 GAL.
AS3-32	ALUMINA SUSPENSION, 0.3 MICRON, 32 OZ.
AS5	ALUMINA SUSPENSION, 5 MICRON, 6 OZ.
AS5-128	ALUMINA SUSPENSION, 5 MICRON, 1 GAL.
AS5-32	ALUMINA SUSPENSION, 5 MICRON, 32 OZ.

Item	Description
AP11	ALUMINA POWDER, 1 MICRON, 1 LB.
AP15	ALUMINA POWDER, 1 MICRON, 5 LBS.
AP31	ALPHA ALUMINA POWDER, 0.3 MICRON, 1 LB.
AP35	ALPHA ALUMINA POWDER, 0.3 MICRON, 5 LBS.
AP51	GAMMA ALUMINA POWDER, .05M, 1 LB.
AP55	GAMMA ALUMINA POWDER, .05M, 5 LBS.

Item	Description
AOP12-1	A/O POWDER, 12 MICRON, 1 LB.
AOP12-5	A/O POWDER, 12 MICRON, 5 LBS.
AOP15-1	A/O POWDER, 15 MICRON, 1 LB.
AOP15-5	A/O POWDER, 15 MICRON, 5 LBS.
AOP17-1	A/O POWDER, 17 MICRON, 1 LB.
AOP17-5	A/O POWDER, 17 MICRON, 5 LBS.
AOP20-1	A/O POWDER, 20 MICRON, 1 LB.
AOP20-5	A/O POWDER, 20 MICRON, 5 LBS.
AOP22-1	A/O POWDER, 22 MICRON, 1 LB.
AOP22-5	A/O POWDER, 22 MICRON, 5 LBS.
AOP240-1	A/O POWDER, 240G, 1 LB.
AOP240-5	A/O POWDER, 240G, 5 LBS.
AOP25-1	A/O POWDER, 25 MICRON, 1 LB.
AOP25-5	A/O POWDER, 25 MICRON, 5 LBS.
AOP3-1	A/O POWDER, 3 MICRON, 1 LB.
AOP320-1	A/O POWDER, 320G, 1 LB.
AOP320-5	A/O POWDER, 320G, 5 LBS.
AOP3-5	A/O POWDER, 3 MICRON, 5 LBS.
AOP400-1	A/O POWDER, 400G, 1 LB.
AOP400-5	A/O POWDER, 400G, 5 LBS.
AOP5-1	A/O POWDER, 5 MICRON, 1 LB.
AOP5-5	A/O POWDER, 5 MICRON, 5 LBS.
AOP600-1	A/O POWDER, 600G, 1 LB.
AOP600-5	A/O POWDER, 600G, 5 LBS.
AOP9-1	A/O POWDER, 9 MICRON, 1 LB.
AOP9-5	A/O POWDER, 9 MICRON, 5 LBS.



MARK V LABORATORY

SILICON CARBIDE GRINDING POWDERS

Item	Description	Price
SCP120-1	S/C POWDER, 120G, 1 LB.	
SCP120-5	S/C POWDER, 120G, 5 LBS.	
SCP240-1	S/C POWDER, 240G, 1 LB.	
SCP240-5	S/C POWDER, 240G, 5 LBS.	
SCP320-1	S/C POWDER, 320G, 1 LB.	
SCP320-5	S/C POWDER, 320G, 5 LBS.	
SCP400-1	S/C POWDER, 400G, 1 LB.	
SCP400-5	S/C POWDER, 400G, 5 LBS.	
SCP600-1	S/C POWDER, 600G, 1 LB.	
SCP600-5	S/C POWDER, 600G, 5 LBS.	
SCP800-1	S/C POWDER, 800G, 1LB.	
SCP800-5	S/C POWDER, 800G, 5 LBS.	



METALLURGICAL GRADE DIAMOND POLISHING COMPOUNDS AVAILABLE IN WATER BASE PASTES, SPRAYS & SLURRIES

Item	Description
5 GRAM SYRINGE	
DPW025	MET-XW DIAMOND PASTE, (W. BASE), 025M, 5G.
DPW1	MET-XW DIAMOND PASTE, (W. BASE), 1M, 5G.
DPW15	MET-XW DIAMOND PASTE, (W. BASE), 15M, 5G.
DPW3	MET-XW DIAMOND PASTE, (W. BASE), 3M, 5G.
DPW30	MET-XW DIAMOND PASTE, (W. BASE), 30M, 5G.
DPW45	MET-XW DIAMOND PASTE, (W. BASE), 45M, 5G.
DPW6	MET-XW DIAMOND PASTE, (W. BASE), 6M, 5G.
DPW9	MET-XW DIAMOND PASTE, (W. BASE), 9M, 5G.



20 GRAM SYRINGE	
DPW2-025	MET-XW DIAMOND PASTE, (W. BASE), 025M, 20G.
DPW2-1	MET-XW DIAMOND PASTE, (W. BASE), 1M, 20G.
DPW2-15	MET-XW DIAMOND PASTE, (W. BASE), 15M, 20G.
DPW2-3	MET-XW DIAMOND PASTE, (W. BASE), 3M, 20G.
DPW2-30	MET-XW DIAMOND PASTE, (W. BASE), 30M, 20G.
DPW2-45	MET-XW DIAMOND PASTE, (W. BASE), 45M, 20G.
DPW2-6	MET-XW DIAMOND PASTE, (W. BASE), 6M, 20G.
DPW2-9	MET-XW DIAMOND PASTE, (W. BASE), 9M, 20G.



Item	Description
DIAMOND PASTE EXTENDER (WATER)	
MF-128	MECA-DIA DIAMOND EXTENDER FLUID, (W. BASE), 1 GAL.
MF-16	MECA-DIA DIAMOND EXTENDER FLUID, (W. BASE), 16 OZ.
MF-32	MECA-DIA DIAMOND EXTENDER FLUID, (W. BASE), 1 QT.

Item	Description
DWP025	DIAMIX PUMP SPRAY (W. BASE), 0.25M
DWP05	DIAMIX PUMP SPRAY (W. BASE), 0.5M
DWP1	DIAMIX PUMP SPRAY (W. BASE), 1M
DWP15	DIAMIX PUMP SPRAY (W. BASE), 15M
DWP3	DIAMIX PUMP SPRAY (W. BASE), 3M
DWP30	DIAMIX PUMP SPRAY (W. BASE), 30M
DWP45	DIAMIX PUMP SPRAY (W. BASE), 45M
DWP6	DIAMIX PUMP SPRAY (W. BASE), 6M
DWP9	DIAMIX PUMP SPRAY (W. BASE), 9M



MARK V LABORATORY

METALLURGICAL GRADE WATER BASE DIAMOND SLURRY

Item	Description
DWS0.25	DIAMOND SLURRY (W. BASE), 0.25M, 1 PT.
DWS0.25-128	DIAMOND SLURRY (W. BASE), 0.25M, 1 GAL.
DWS0.5	DIAMOND SLURRY (W. BASE), 0.5M, 1 PT.
DWS0.5-128	DIAMOND SLURRY (W. BASE), 0.5M, 1 GAL.
DWS1	DIAMOND SLURRY (W. BASE), 1M, 1PT.
DWS1-128	DIAMOND SLURRY (W. BASE), 1M, 1 GAL.
DWS15	DIAMOND SLURRY (W. BASE), 15M, 1PT.
DWS15-128	DIAMOND SLURRY (W. BASE), 15M, 1GAL.
DWS3	DIAMOND SLURRY (W. BASE), 3M, 1PT.
DWS3-128	DIAMOND SLURRY (W. BASE), 3M, 1 GAL.
DWS30	DIAMOND SLURRY (W. BASE), 30M, 1 PT.
DWS30-128	DIAMOND SLURRY (W. BASE), 3M, 1GAL.
DWS6	DIAMOND SLURRY (W. BASE), 6M, 1PT.
DWS6-128	DIAMOND SLURRY (W. BASE), 6M, 1GAL.
DWS9	DIAMOND SLURRY (W. BASE), 9M, 1PT.
DWS9-128	DIAMOND SLURRY (W. BASE), 9M, 1 GAL.



Item	Description
DIAMOND SLURRY EXTENDER (WATER BASE)	
MF-128	MECA-DIA DIAMOND EXTENDER FLUID,(W.BASE), 1 GAL.
MF-16	MECA-DIA DIAMOND EXTENDER FLUID,(W. BASE) 16 OZ.
MF-32	MECA-DIA DIAMOND EXTENDER FLUID,(W.BASE), 1 QT.



METALLURGICAL GRADE DIAMOND POLISHING COMPOUNDS AVAILABLE IN OIL BASE PASTES, SPRAYS & SLURRIES

Item	Description
5 GRAM SYRINGE	
DPN025	MET-X II DIAMOND PASTE, 1/4M, 5G.(OIL BASE)
DPN1	MET-X II, DIAMOND PASTE, 1M, 5G.(OIL BASE)
DPN15	MET-X II, DIAMOND PASTE, 15M, 5G.(OIL BASE)
DPN3	MET-X II, DIAMOND PASTE, 3M, 5G.(OIL BASE)
DPN30	MET-X II, DIAMOND PASTE, 30M, 5 G.(OIL BASE)
DPN45	MET-X II, DIAMOND PASTE, 45M, 5G.(OIL BASE)
DPN6	MET-X II, DIAMOND PASTE, 6M, 5G.(OIL BASE)
DPN9	MET-X II, DIAMOND PASTE, 9M, 5G.(OIL BASE)
20 GRAM SYRINGE	
DPN2-025	MET-X II, DIAMOND PASTE, 1/4M, 20G.(OIL BASE)
DPN2-1	MET-X II, DIAMOND PASTE, 1M, 20G.(OIL BASE)
DPN2-15	MET-X II, DIAMOND PASTE, 15M, 20G.(OIL BASE)
DPN2-3	MET-X II, DIAMOND PASTE, 3M, 20G.(OIL BASE)
DPN2-30	MET-X II, DIAMOND PASTE, 30M, 20G.(OIL BASE)
DPN2-45	MET-X II, DIAMOND PASTE, 45M, 20G.(OIL BASE)
DPN2-6	MET-X II, DIAMOND PASTE, 6M, 20G.(OIL BASE)
DPN2-9	MET-X II, DIAMOND PASTE, 9M, 20G.(OIL BASE)



Item	Description
DIAMOND PASTE EXTENDER (OIL BASE)	
DPT-128	DIAMOND PASTE EXTENDER, 1 GAL.(OIL BASE)
DPT-16	DIAMOND PASTE EXTENDER, 16 OZ.(OIL BASE)..
DPT-32	DIAMOND PASTE EXTENDER, 32 OZ.(OIL BASE)



MARK V LABORATORY
18 KRIPES RD. EAST GRANBY,CT 06026
800-243-9776 860-653-7201 fax 860-653-4087

MARK V LABORATORY

METALLURGICAL GRADE OIL BASE DIAMOND SPRAYS & SLURRIES

Item	Description
DAP-025	DIAMIX PUMP SPRAY (OIL. BASE), 0.25M
DAP-05	DIAMIX PUMP SPRAY (OILBASE), 0.5M
DAP-1	DIAMIX PUMP SPRAY (OIL BASE), 1M
DAP-15	DIAMIX PUMP SPRAY (OIL BASE), 15M
DAP-3	DIAMIX PUMP SPRAY (OIL BASE), 3M
DAP-30	DIAMIX PUMP SPRAY (OIL BASE), 30M
DAP-45	DIAMIX PUMP SPRAY (OIL BASE), 45M
DAP-6	DIAMIX PUMP SPRAY (OIL BASE), 6M
DAP-9	DIAMIX PUMP SPRAY (OIL BASE), 9M



Item	Description
DS05	DIAMOND SLURRY (OIL BASE), 0.5M, 1PT.
DS1	DIAMOND SLURRY (OIL BASE), 1M, 1 PT.
DS15	DIAMOND SLURRY (OIL BASE), 15M, 1PT.
DS3	DIAMOND SLURRY (OIL BASE), 3M, 1PT.
DS30	DIAMOND SLURRY (OIL BASE), 30M, 1PT.
DS6	DIAMOND SLURRY (OIL BASE), 6M, 1PT.
DS9	DIAMOND SLURRY (OIL BASE), 9M, 1PT.



DIAMOND SLURRY EXTENDER (OIL BASE)

Item	Description
DPT-128	DIAMOND PASTE EXTENDER, 1 GAL.(OIL BASE)
DPT-16	DIAMOND PASTE EXTENDER, 16 OZ.(OIL BASE)..
DPT-32	DIAMOND PASTE EXTENDER, 32 OZ.(OIL BASE)

METALLURGICAL COLLOIDAL SILICA POLISHING SUSPENSIONS

Item	Description
C06-128	COLLOIDAL SILICA SUSPENSION, .06M, 1 GAL.
C06-32	COLLOIDAL SILICA SUSPENSION, .06M, 1 QT.

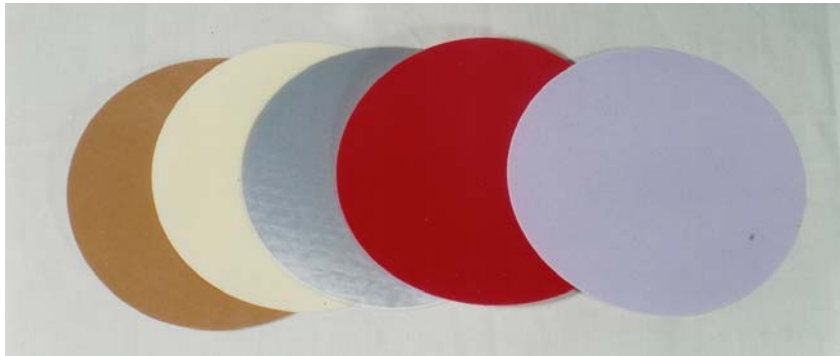


MARK V LABORATORY
18 KRIPES RD. EAST GRANBY, CT 06026
800-243-9776 860-653-7201 fax 860-653-4087

MARK V LABORATORY

METALLURGICAL POLISHING CLOTHS WITH PSA & PLAIN BACKING

AVAILABLE IN 2 7/8", 8", 9", 10", 12" & 14" DIAMETERS



Item	Description
STANDARD POLISHING CLOTHS	
MC10	ALPHA A CLOTH, F/10" WHEEL, 10/PKG.
MC10A	ALPHA A CLOTH, 10" PSA, 10/PKG.
MC12	ALPHA A CLOTH, F/12" WHEEL, 10/PKG.
MC12A	ALPHA A CLOTH, 12" PSA, 10/PKG.
MC14A	ALPHA A CLOTH, 14" PSA, 10/PKG.
MC2A	ALPHA A CLOTH, 2 7/8" PSA, 20/PKG.
MC8	ALPHA A CLOTH, F/8" WHEEL, 10/PKG.
MC82A	ALPHA A CLOTH, 8" X 2.5" PSA, 10/PKG.
MC8A	ALPHA A CLOTH, 8" PSA, 10/PKG.
MC9A	ALPHA A CLOTH, 9" PSA 10/PKG.
NC10	NYLON CLOTH, F/10" WHEEL, 10/PKG.
NC12	NYLON CLOTH, F/12" WHEEL, 10/PKG.
NC12A	NYLON CLOTH, 12" PSA, 10/PKG.
NC14A	NYLON CLOTH, 14" PSA, 10/PKG.
NC2A	NYLON CLOTH, 2 7/8" PSA, 20/PKG.
NC8	NYLON CLOTH, F/ 8" WHEEL, 10/PKG.
NC82A	NYLON CLOTH, 8 X 2 1/2" PSA, 10/PKG.
NC8A	NYLON CLOTH, 8" PSA, 10/PKG.
SA10A	SATIN CLOTH 10" PSA, 10/PKG.
SA12A	SATIN CLOTH 12" PSA, 10/PKG.
SA14A	SATIN CLOTH 14" PSA, 10/PKG.
SA8A	SATIN CLOTH 8" PSA, 10/PKG.
SC10	SILK CLOTH, F/10" WHEEL, 10/PKG.
SC10A	SILK CLOTH 10" PSA, 10/PKG.
SC12	SILK CLOTH, F/12" WHEEL, 10/PKG.
SC12A	SILK CLOTH 12" PSA, 10/PKG.
SC14A	SILK CLOTH 14" PSA, 10/PKG.
SC8	SILK CLOTH, F/8" WHEEL, 10/PKG.
SC8A	SILK CLOTH 8" PSA, 10/PKG.
TC10	MET-X CLOTH, 10" PSA, 10/PKG.
TC12	MET-X CLOTH, 12" PSA, 10/PKG.
TC14	MET-X CLOTH, 14" PSA, 10/PKG.
TC2	MET-X CLOTH, 2 7/8" PSA, 20/PKG.
TC8	MET-X CLOTH, 8" PSA, 10/PKG.
TC82	MET-X CLOTH, 8" X 2-1/2" PSA, 10/PKG.
TC9	MET-X CLOTH, 9" PSA, 10/PKG.

Our most popular final polish cloth used with Diamond or Alumina for most materials. Alpha A also known as microcloth has a short nap and is brown in color. Available in PSA or plain back.

Nylon final polish cloth used with Diamond or Alumina for polishing most materials while maintaining flatness. This napless cloth is off white in color. Available in PSA or plain back.

Satin final polish cloth used with Diamond or Alumina for polishing most materials while maintaining flatness. This PSA napless cloth is white in color.

Silk final polish cloth used with Diamond or Alumina for while maintaining flatness This napless cloth is white in color.

Met-X Cloth is a napless cloth used with Diamond as a first polish cloth on a variety of materials. Also known as Pan cloth this most common of first polish cloths has a parchment appearance

MARK V LABORATORY

METALLURGICAL POLISHING CLOTHS WITH PSA & PLAIN BACKING AVAILABLE IN 8", 9", 10", 12" & 14" DIAMETERS

Item	Description
SPECIALTY POLISHING CLOTHS	
ABC-12A	ALPHA SB (SOFT) CLOTH 12", PSA, 10/PKG.
ABC-14A	ALPHA SB (SOFT) CLOTH, 14", PSA, 10/PKG.
ABC-8A	ALPHA B CLOTH, 8", PSA 10/PKG.
BC10	GREEN BILLIARD CLOTH, F/10"WHL.,10/PKG.
BC12	GREEN BILLIARD CLOTH, F/12"WHL.,10/PKG.
BC8	GREEN BILLIARD CLOTH, F/8"WHL.,10/PKG.
CC10	CANVAS CLOTH, F/10" WHL.,10/PKG.
CC12	CANVAS CLOTH, F/12" WHL.,10/PKG.
CC8	CANVAS CLOTH, F/8" WHL.,10/PKG.
KC12	BROADCLOTH, F/12" WHEEL, 10/PKG.
KC8	BROADCLOTH, F/8" WHEEL, 10/PKG.
MCR10A	MICRO RAYON WHITE CLOTH, 10" PSA, 10/PKG.
MCR12A	MICRO RAYON WHITE CLOTH, 12" PSA, 10/PKG.
MCR8A	MICRO RAYON WHITE CLOTH, 8" PSA, 10/PKG.
MCR9A	MICRO RAYON WHITE CLOTH, 9" PSA, 10/PKG.
MEC10	COTTON CLOTH, F/10"WHEEL, 10/PKG.
MEC12	COTTON CLOTH, F/12"WHEEL, 10/PKG.
MEC8	COTTON CLOTH, F/8" WHEEL, 10/PKG.
MT10A	MASTERCHEM CLOTH 10" PSA, 10/PKG.
MT12A	MASTERCHEM CLOTH 12" PSA, 10/PKG.
MT14A	MASTERCHEM CLOTH 14" PSA, 10/PKG.
MT8A	MASTERCHEM CLOTH 8" PSA, 10/PKG.
MTP10A	10" PSA POLYTECH SUPREME CHEM CLOTH, 10/PKG.
MTP12A	12" PSA POLYTECH SUPREME CHEM CLOTH, 10/PKG.
MTP14A	14" PSA POLYTECH SUPREME CHEM CLOTH, 10/PKG.
MTP8A	8" PSA POLYTECH SUPREME CHEM CLOTH, 10/PKG.
RC10	RED FELT CLOTH, F/10"WHEEL, 10/PKG.
RC12	RED FELT CLOTH, F/12"WHEEL, 10/PKG.
RC8	RED FELT CLOTH, F/8"W, 10/PKG.
RC8A	RED FELT CLOTH, 8" PSA, 10/PKG.
VC10	RAY/VEL CLOTH, F/10"WHEEL, 10/PKG.
VC12	RAY/VEL CLOTH, F/12"WHEEL, 10/PKG.
VC8	RAY/VEL CLOTH, F/8"WHEEL, 10/PKG.

Final polish blue color medium nap cloth used with Diamond or Alumina for soft materials.

First polish green wool cloth used with Alumina & Aluminum Oxide slurries for ferrous materials.

Coarse polishing tan canvas cloth used with Aluminum Oxide & Silicon Carbide slurries.

Final polish low nap tan wool cloth used with Alumina.

Final polish white color low nap cloth used with Diamond or Alumina for soft materials.

Final polish low nap tan cotton cloth used with Diamond, Alumina and oxide for soft materials.

Low nap medium grade cloth has black suede appearance, with heavy body & polymer inner coat for chemical polishing.

Low nap highest grade cloth has black suede appearance, with heavy body & polymer inner coat for chemical polishing.

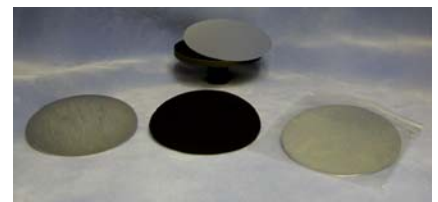
First polish red felt wool cloth used with Alumina & Aluminum Oxide slurries for ferrous materials.

Final polish medium nap black velvet cloth used with Alumina for soft materials.

QUICK-CHANGE 2 PART WHEEL SYSTEM FOR PSA POLISHING CLOTHS

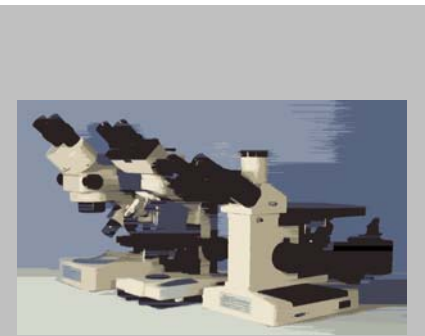
MAGNA DISK SYSTEM USES A MAGNETIZED RUBBER DISC & 2 PLATED STEEL DISCS FOR QUICK CHANGE POLISHING SYSTEM

Item	Description
MAG-1	8" MAGNA DISK SYSTEM: 1 MAGNETIC DISC & 2 METAL DISCS
MAG-10	10" MAGNA DISK SYSTEM: 1 MAGNETIC DISC & 2 METAL DISCS
MAG-12	12" MAGNA DISK SYSTEM: 1 MAGNETIC DISC & 2 METAL DISCS
MAG-13	10" METAL DISCS, 2 EA.
MAG-2	8" MAGNETIC DISK, EA.
MAG-20	10" MAGNETIC DISK, EA.
MAG-22	12" MAGNETIC DISK, EA.
MAG-23	12" METAL DISK, 2/PKG.
MAG-3	8" METAL DISK, 2/PKG.



MARK V LABORATORY

MARK V LABORATORY METALLURGICAL MICROSCOPES INVERTED BRIGHTFIELD, POLARIZING UPRIGHT & STEREO SCOPES



Item	Description
MXLT	INVERTED TRINOCULAR MICROSCOPE
	The MXLT Precision Inverted Brightfield Trinocular Microscope Features, Excellent Optics, Ergonomic Controls, 6"x7" Coaxial Mechanical Stage, Kohler Quartz Halogen illumination with a compact space saving design. The MXLT comes complete with 10X Widefield Eyepieces, 5X, 10X, 20X & 40X Achromatic Objectives, Color Filtration Pack, Stage Clip and Dust Cover. This Microscope Makes an ideal optical platform for Digital and other Camera Systems. Options 50X & 100X Plan Achromatic Objectives. 110V/ 220V Bulb # 64250 6V 20W
MXT	UPRIGHT BRIGHTFIELD/ POLARIZING MICROSCOPE, 110V
	The MXT Precision Upright Brightfield Trinocular Microscope Features, Polarizing Optics, Ergonomic Controls, Large X-Y Coaxial Stage, Kohler Quartz Halogen Illumination with compact space saving design. The MXT comes complete with 10X Widefield Eyepieces, 5X, 10X, 20X & 40X Achromatic Objectives, Color Filtration Pack, Metal Microscope Slides and Dust Cover. This Microscope makes an ideal optical platform for Digital and other Camera Systems. Options 50X & 100X Plan Achromatic Objectives. 110V/ 220V Bulb # 64250 6V 20W
MZ414T	TRINOCULAR STEREO ZOOM SCOPE 10-40X W/ ILLUMINATION
	The MZ414T Trinocular Zoom Stereo Microscope comes complete with 10X Widefield Eyepieces with 10 - 40X as standard power. The microscopes features adjustable Post Style Stands with built-in Reflected and Transmitted Quartz Halogen Illuminators. This Microscope makes an ideal optical platform for Digital and other Camera Systems. Options include Post Extensions and Ring Light Illuminators. 110V/ 220V
MEQX5	PC MICROSCOPE W/10X,60X & 200X & IMAGE SOFTWARE
	The ME-QX5 has 3 Magnifications of 10X, 60X and 200X. Go from Macro to Micro with the turret-mounted objectives. The unit plugs right into the USB Port of most Lap-tops and Desktop PC's. Just load the software, plug in the unit and go! Capture and Display Live Images that can be saved as BMP's JPEG's, AVI's & Time Lapse Video Recording. The MEQX5 offers unique image tools in Paint with ability to zoom in on areas of interest and manipulate the image in a variety ways. The Microscope comes with a heavy duty Rack and Pinion Post Style Stand that allows Focusing through 1/2"-4" Working Distance. Built- in Reflected Illuminator has variable intensity powered by the USB Port. Options Include a Tripod Stand for Field Work and a X -Y Mechanical Stage. Works with Windows 98SE- XP.
MEQX5T	PC SCOPE W/ TRANSMITTED LIGHT STAND & SOFTWARE

MARK V LABORATORY
18 KRIPES RD. EAST GRANBY, CT 06026
800-243-9776 860-653-7201 fax 860-653-4087

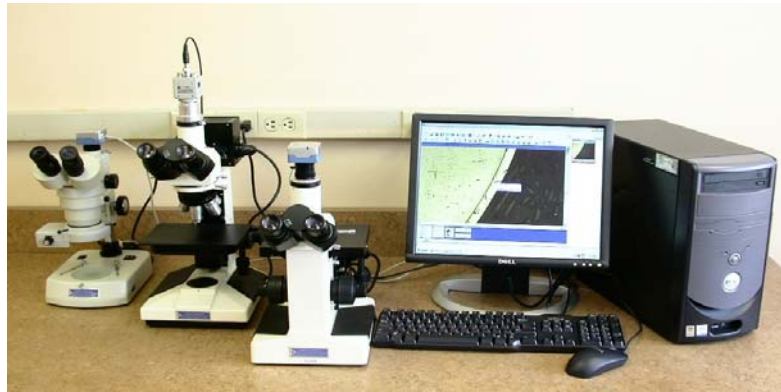
MARK V LABORATORY

METALLURGICAL MICROSCOPE FILM & ACCESSORYS

Item	Description
667	POLAROID B/W, 2 PACK, 20 EXP.
690	POLAROID COLOR, 2 PACK 20 EXP.
METSS100	HITACHI COLOR VIDEO FILM 100 EXP.
MCP-S	LEVELING CLAY STICK
MMS	METAL MICROSCOPE SLIDE
SLHP	SAMPLE LEVELING PRESS
SM-IN	METAL INCH STAGE MICROMETER, .001" DIV.
SM-M	METAL METRIC STAGE MICROMETER, .01 MM DIV.

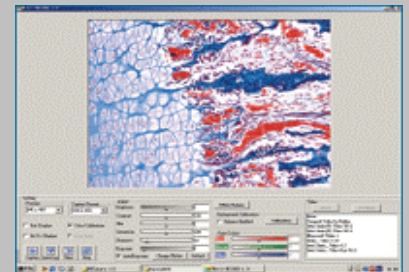


MARK V MICROSCOPE DIGITAL CAMERA'S & IMAGING SYSTEMS



Item	Description
MVOPTIC	2300 DIGITAL MICROSCOPE CAMERA SYSTEM W/ SOFTWARE

Maximum pixels - Minimum price. A first for the Digital Microscopy market, the **MVOPTIC 2300** features 3.0 Megapixel resolution at a reasonable price. The 2300 is a high-resolution microscope camera using a high-speed USB2.0 connection. A free USB2.0 PCI card is included in the package for less current PC's. Preview live images up to 1650x1240, capture and save images in a variety of formats. The small and lightweight design makes even this powerful camera very easy to use and mount on virtually any microscope in the world. This CMOS camera with C-ring Mount comes with a Microscope Adapter or Reducing Lens System and uses USB 2.0 connecting cable (permanently attached to camera) for high speed PC connection. The standard 2.0 Capture and Measuring Software allows for multiple calibrations for 1-3 Microscopes and measures lines, angles, radius's, areas, etc. that appear in image data box's on the screen. Report Generation is also included. The 2300 comes complete with Calibration Slide for accurate calibrations and measurements. Complete Packages are available with Microscope, Camera & Dell PC, Fully Loaded, Calibrated with ASTM Certification.



MVOPTID	CUSTOM DELL PC W/ DVI FLAT MONITOR & DVI GRAPHICS
MVOPTIM	3.0 IMAGE ANALYSIS SOFTWARE FOR MVOPTIC CAMERA

MARK V MICROSCOPE VIDEO CAMERA'S & CAPTURE SYSTEMS

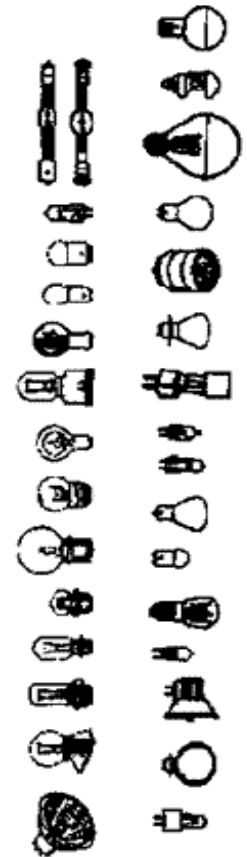
Item	Description
MET6000	JAVELIN VIDEO MICROMETER W/ 5 OPTICAL CALIBRATIONS
METBTV	B/W VIDEO SYSTEM, W/ 1/2" CCD CAMERA & 12" MONITOR
METCTV	HITACHI COLOR VIDEO SYSTEM W/ KPD-20 & FLAT 20" SCREEN
METKPD-20	HITACHI COLOR VIDEO CAMERA WITH MESSAGE & ZOOM
METVCP	USB VIDEO/PC IMPORT CAPTURE SYSTEM



MARK V LABORATORY

MICROSCOPE BULB'S FOR MARK V, UNITRON, OLYMPUS & NIKON

Item	Description
1630	BAUSCH & LOMB ILLUMINATOR. BULB, EA.
64250	HALOGEN BULB, 20W, 6V
64425	HALOGEN BULB, 20W, 12V, EA.
64440	HALOGEN BULB, 50W, 12V, EA.
64610	HALOGEN BULB, 50W, 12V, EA.
64625	HALOGEN BULB, 100W, 12V, EA.
64633	HALOGEN BULB, 150W, 15V, EA.
64640	VERSAMET BULB 150W, 24V, EA.
64642	HALOGEN BULB,150W,24V,EA.
64655	HALOGEN BULB, 250W, 24V, EA.
7023	HALOGEN BULB, 110W, 12V, EA.
7388	HALOGEN BULB, 20W, 6V, EA.
76513	NIKON EPIPHOT BULB, 100W, 12V, EA.
76516	NIKON EPIPHOT BULB, 50W, 12V, EA.
8018	HALOGEN PROJECTOR BULB, 15W, 6V, EA.
8024	BULB, 12V 40W, EA.
EJA	PROJECTION BULB, 150W, 21V (3300K)
EKE	PROJECTION BULB, 150W, 21V
EL-12B	UNITRON BME BULB 15W, 6V
EL-1B	UNITRON BN-11 BULB,50W, 13.5V
EL-2B	UNITRON MEC BULB, 8V 12W, EA.
EL38	UNITRON BULB,8V 15 W. EA.
EL-3B	UNITRON BULB, 12W, 8V, EA.
ELH	PROJECTION BULB, 300W, 120V
EMC	PROJECTION BULB, 100W, 12V
LS15	OLYMPUS BULB F/BH 6V, 2.5A, EA
MEQXB	REPLACEMENT REFLECTED BULB F/ MEQX MICROSCOPES
MEQXT	REPLACEMENT TRANSMITTED BULB F/ MEQX MICROSCOPE
MHT8V	ILLUMINATOR BULB F/MHT1000
MIC-1	DUAL RING ILLUMINATOR BULB
PCR-BU	PCR-2200 BULB
PCS-BU	PCS-400 BULB
SHT-8V	SHIMADZU ILLUMINATOR BULB EA.
TQ-5LW	FLUORESCENT RING BULB REPLACEMENT, 17 WATT
TQ-7LX	FLUORESCENT RING BULB HI- INTENSITY REPLACEMENT, 17 W



MICROSCOPE FIBER OPTIC ILLUMINTORS

Item	Description
TQ-AN1	FIBERLIGHT ANULAR RING 2.3" I.D.
TQ-AN2	FIBERLIGHT ANULAR RING 2.6" I.D.
TQ-DLP	DUAL LIGHT PIPE, EA.
TQ-FOI	FIBER OPTIC ILLUMINATOR UNIT
TQ-SLP	SINGLE LIGHT PIPE

American Made Fiber Optic Illuminator for most Stereo Microscopes with variable Hi-Intensity 150 Watt Quartz Halogen Reflector Bulb. Fan cooled with Low Noise & Vibration the TQ-FOI accepts the wide range of Light Guides and Annular Ring Lights Listed. 110V/220V available.



MARK V LABORATORY

MICROSCOPE FLUOREASANT ILLUMINTORS

Item	Description
MIC-1	DUAL RING ILLUMINATOR BULB
MIC-O-LITE	DUAL RING ILLUMINATOR, COMPLETE
TQ-5LC	FLUORESCENT RING LIGHT ILLUMINATOR SINGLE INTENSITY
TQ-5LW	FLUORESCENT RING BULB REPLACEMENT, 17 WATT
TQ-7LC	FLUORESCENT RING LIGHT VARIABLE H-INTENSITY(VIDEO)
TQ-7LX	FLUORESCENT RING BULB HI- INTENSITY, 17 WATT



The **TQ-5LC & TQ-7LC** Fluoresant Ring Illuminators provide bright, cool, shadow free illumination for stereo microscopes. Attached directly to the microscope body, the ring light surrounds objects with light that emanates from every part of its plane. Fluoresant Rings come complete with 110V Power Supply.

MARK V LAB MICROHARDNESS & PORTABLE ROCKWELL TESTERS

Item	Description	Price
MHT2000	AUTOMATIC MICRO HARDNESS TESTER, 15-1000 GRAM LOAD	
MHT-KD	KNOOP DIAMOND INDENTER F/ MHT1000	
MHT-VD	VICKERS DIAMOND INDENTER F/ MHT1000	

The **MHT2000** Hardness Tester measures in both Vickers and Knoop ranges and features automatic pushbutton load/time sequencing. Test loads are between 15 and 1000 grams with load durations from 5 to 45 seconds. The microscope offers magnifications of 100X for observation and 400X for measuring. Measuring is done with an ocular micrometer with a course scale of 20 microns and a fine scale of .5 microns. The X, Y sample stage is 120 X 120mm. Digital computer readout available. 110V



Item	Description
MHR316	PORTABLE ROCKWELL TESTER W/ BLOCK 20-65 HRC
MHR316.2	REPLACEMENT INDENTER F/ 316 TESTER
MHR316	ROCKWELL TEST BLOCK 20-65 HRC

Portable Hardness Tester for Rockwell C Scales 20-65 HRC. The **MHR316** Unit features built-in Fiber Optic Light Source, Calibrated Preload Indenter and Direct Reading 60X Microscope. The Portable design makes it ideal for large pieces, field work, small Machine Shops, Heat Treaters, and Quality Control personnel The MHR316 Tester comes complete with Calibrated Test Block Conversion Calculator and Carrying Case.. A full range of Certified A.S.T.M. Test Blocks are available. Accuracy is +- 1.5 points. Power 2 AAA Batteries



MARK V LAB MICROHARDNESS & ROCKWELL TEST BLOCKS

Item	Description
TB-KN	KNOOP TEST BLOCK
TB-RB	ROCKWELL B TEST BLOCK
TB-RC	ROCKWELL C TEST BLOCK
TB-VK	VICKERS TEST BLOCK



MARK V LABORATORY

MARK V LABORATORY ELECTRO ETCHER & VIBROGRAVER

Item	Description
MVEE	MARK V ELECTRO ETCHER, COMPLETE, 110/220V
<p>Manufactured by Mark V Laboratory, for Etching Mounted and Un-mounted Samples to show Grain, Case Depth etc. The MVEE Features a Dual Range 1-15 & 15-30 DC Power Supply with Output Voltage @ 0-2 Amps with voltage regulation load of less than 0.1% from no load to full load. Dual Meters simultaneously monitor the output voltage and current. The system comes complete with Stainless Steel Cathode and Anode, Pyrex Etching Chamber with Lid, 24" Connector Cable, and Reagents Chart. 110V 60Hz 220V 50Hz.</p>	
MVEE-MT	MARK V ELECTRO ETCHER, COMPLETE WITH TIMER, 110/220V



Item	Description
VG-1	VIBROGRAVER W/ CARBIDE TIP
<p>Mark V Laboratory VG-1 Vibrogravers come with Diamond Tips for Engraving Samples and Specimens. Ideal for Identification and Serializing all types of parts. 110V</p>	
VG-DP	VIBROGRAVER REPLACEMENT DIAMOND TIP, EA.



THERMOLYNE HOT PLATES, OVENS & FURNACES

Item	Description
THP18300	THERMOLYNE DIGITAL HOT PLATE, 110V
<p>Thermolyne THP18300 Digital Hot Plates Feature: Die cast Aluminum case with Ceramic Coated Stainless Steel Top. Sensitive Thermostatic Control provides Protection of Internal Components against Spillage. Embedded Heating Elements transfer heat evenly to the top plate, supplying uniform heat across its surface, Digital Readout & Control insure accurate temperature range. 110/220V.</p>	
<p>Thermolyne Ovens Feature: Double Pane Glass Windowed Door providing Easy Viewing, Thermometer Port at the top of the oven accepts standard Stem Thermometers. 12"x12"x12" Chamber is Vented through the top for removal of moisture and other vapors. Rapid Heat-up Saves Time (56C in 9 min.) Operating Temperature Ambient -140C. Aluminum Chamber is Easy to Clean. Supplied with one Removable Shelf. 110/220V.</p>	
<p>Thermolyne Furnaces Feature: Furnaces with 3 Types of Automatic Controllers, Single Set-point, Programmable & Multi-Programmable. Highly Proficient Ceramic Insulated 14"x14"x14" Chamber for Maximum Energy Efficiency. Triple the Useable Working Area with 2 Refractory Shelves. 1" Diameter Vent on the top of furnace Removes Contaminates and Moisture. A Door Safety Switch for Operator Safety. 3/8" Rear Port for Chamber Temperature with an Independent Device. Critical Electronics are Protected by a 35 Amp Circuit Breaker. 120/ 240V.</p>	



MARK V LABORATORY

PTC SURFACE THERMOMETERS

Item	Description
310.7	MAGNETIC THERMOMETER HOLDER, EA.
310F	SURFACE THERMOMETER, 0-300F, EA.
313F	SURFACE THERMOMETER, 5-500F, EA.
314F	SURFACE THERMOMETER, 50-750F, EA.



The PTC 310F & 313F Surface Thermometers use a unilateral Thermal Sensor to measure the temperature of the Contact Surface. These Instruments are Fully Enclosed to protect the Bimetal from dirt to dust. The Temperature Range is 0-300F +/- 2% &

5-500F. 310.7 Optional Spring Holder The PTC 314F Dual Magnet Mount Surface Thermometers are designed to be used on Horizontal or Non-Horizontal Ferrous

BRANSON ULTRASONIC CLEANER UNITS & SOLUTIONS



Bransonic® Ultrasonic Cleaners

Branson now offers you seven ways to get the full efficient power of ultrasonic cleaning at an affordable price. It's the Bransonic line of low cost, high quality ultrasonic cleaners, ranging from one quart to eight gallons.

Dependable Solid State Circuitry is used for a long trouble-free life (no fans or other moving parts). The Generator and Heater have separate Controls and the Metal/Ceramic Transducers assure both Durability and Superior Power. Three Types of Units are available:

Item	Description
B1510MT	ULTRASONIC CLEANER 1/2 GAL. UNIT W/TIMER
B2510MT	ULTRASONIC CLEANER 3/4 GAL. UNIT W/TIMER
B3510MT	ULTRASONIC CLEANER 1-1/2 GAL. UNIT W/TIMER
B5510MT	ULTRASONIC CLEANER 2-1/2 GAL. UNIT W/TIMER
B8510MT	ULTRASONIC CLEANER 5.5 GAL.UNIT W/TIMER
BRANSON OPTIONS	MHT MECHANICAL TIMER W/ HEAT & DHT DIGITAL TIMER W/ HEAT
BRANSON OPTIONS	STAINLESS STEEL PERFORATED & SOLID TRAYS
BEC-128	BRANSON ELECTRONICS CLEANER 1 GAL.
BGP-128	GENERAL PURPOSE CLEANER, 1 GAL.
BIS-128	INDUSTRIAL STRENGTH CLEANER, 1 GAL
BOX-128	OXIDE REMOVERCLEANER, 1 GAL



MSDS BEC

MSDS BGP

MSDS BIS

MSDS BOX

MARK V LABORATORY

RECONDITIONED EQUIPMENT BULLITIN BOARD



UNITRON VERSAMET

Multi-Image Metallograph Features; Brightfield/Darkfield, Polarized Light, & Nomarski Interference Contrast. Koehler Illuminator W/150 Watt Quartz Halogen Bulb. Complete with 10x Widefield Eyepieces, 5X, 10X, 20X, 40X, & 80X Flatfield Objectives, View Screen, Polaroid Camera and Par focal Video Camera Adapter. 110V.

1 Year Warranty



UNITRON UNIMET

Brightfield Metallograph Features; Polarized Light, & Contrast. Koehler Illuminator W/150 Watt Quartz Halogen Bulb. Complete with 10x Widefield Eyepieces, 5X, 10X, 20X, 40X, & 80X Flatfield Objectives, View Screen, Polaroid Camera and Par focal Video/Digital Camera Adapter. 110V.

1 Year Warranty



STRUERS DPU With Pmd Force SYSTEM AUTOMATIC POLISHER

Variable Speed (0-500 rpm) 12" Grinder/Polisher with Motorized Polishing Head Attachment provides Automatic Weight Feed Automatic Grinding & Polishing Capability. Complete with Motorized Head, 8 Sample Fixture and two 12" Aluminum Wheels

1 Year Warranty

MARK V LABORATORY

RECONDITIONED EQUIPMENT BULLITIN BOARD



BUEHLER SIMPLIMET 1

Hydraulic Specimen Mounting Press Completely Reconditioned with 1 1/4" Mold and Automatic Heater. Features include:

- Quick ram speeds up and down for good productivity
- Mechanical Timer
- Buehler Tetramet Mold Closure for fast, safe press operation
- Thermostatically controlled 350W Mold Heater
- Slip-on Mold Cooler

1 Year Warranty



WILSON ROCKWELL HARDNESS TESTER

Wilson Model 3PR Rockwell C Scale Hardness Tester. Complete with Diamond & Ball Penetrators, 4 Anvils and Full Weight Set.

1 Year Warranty



UNITRON BN-11 BRIGHT FIELD METALLOGRAPH

Unitron Metallograph Features; Inverted Brightfield with Tungsten Illumination. Complete with 10x Widefield Eyepieces, 5X, 10X, 20X, 40X, & 80X Flatfield Objectives, View Screen, and Par focal Video/Digital Camera Adapter. 110V. 1 Year Warranty

MARK V LABORATORY

18 KRIPES RD. EAST GRANBY, CT 06026

800-243-9776 860-653-7201 fax 860-653-4087