

# Fittings Catalog

January 2008

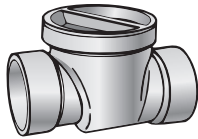




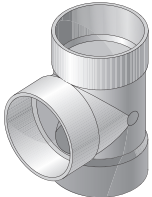
Over 20 years ago, NDS began producing plastic drainage and landscape products. From the beginning, our commitment to leading the industry has been unwavering, leading to remarkable innovations and state-of-the-art products that fit every environment, every schedule, every need.

Today, our commitment to providing one-source solutions has led to the development of superior quality drainage products, landscape products, fittings, valve and meter boxes, equipment pads, and drip and micro irrigation products. No product is added to our line without meeting exhaustive testing and extensive research requirements. Plus, NDS is uniquely able to offer our complete inventory of products from regional warehouses in the US and Puerto Rico. Our goal: one-business-day delivery. Our track record: outstanding.

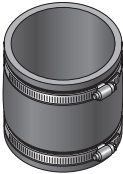
Take a moment to look through this catalog, noting the depth of our product offering. If you have any questions or to place an order, just call 1-800-726-1994 from 5 a.m. to 5 p.m. PST. and let us offer the best solution for you.



**DIVERTER & BACKWATER VALVES** **3**



**SOLVENT WELD FITTINGS** **4-8**



**NDS FLEXIBLE COUPLINGS AND CONNECTORS** **9-12**



**NDS CONNECTORS AND O-RINGS** **13-14**

**CORRUGATED FITTINGS** **14**



**NDS FLEXIBLE SADDLES** **15-16**

**MARKETING MATERIALS** **17**

**Warranty and Terms – See Back Cover.**

# DIVERTER AND BACKWATER VALVES

## Diverter Valve

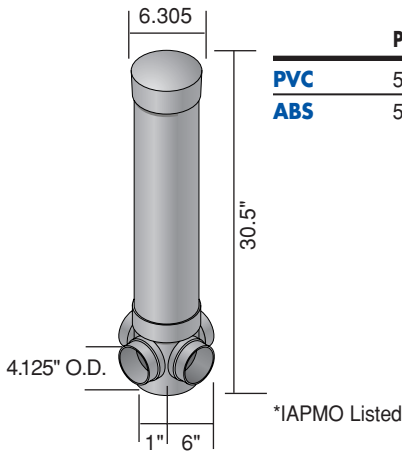
Here's the simplest, strongest, and most economical diverter valve ever invented for septic tank leach fields. It is made of tough molded plastic that will not shatter, bend, rust or corrode. It is lighter in weight, easier to handle and less expensive to ship.

### Functional

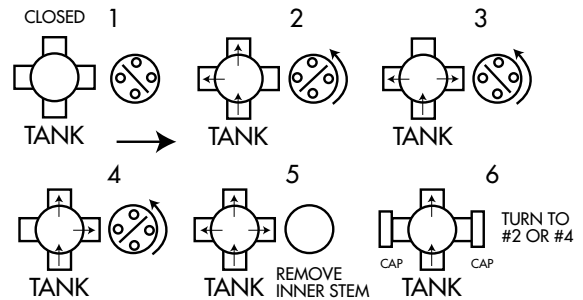
The diverter valve stem flow may be controlled to individual or multiple fields (up to three) in any combination. With a three-way valve stem, flow may be diverted to any two outlets. To allow flow through all outlets, the valve stem may be removed from the assembly.

### Easy To Install

Connect 4" plastic sewer and drain pipe to inlets and outlets on the four way distribution box. (Unwanted outlets may be sealed by installing caps). The Diverter shield which houses the diverter stem may be cut to desired length.



	Part No.	Description	Color	Pkg. Qty.	Wt. Ea. (lbs.)	Product Class
<b>PVC</b>	575P	4" PVC Diverter Valve	White	4	9.50	35PV
<b>ABS</b>	575	4" ABS Diverter Valve	Black	4	7.50	35AB



## Gravity Backwater Valve

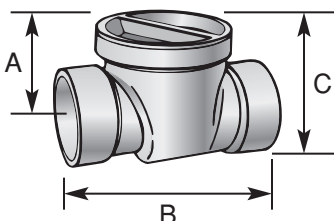
The NDS gravity flow Backwater Valve is designed to protect low areas or basements from the backflow of waste from street sewers. It is available in 2", 3", 4" and 6" sizes PVC material. It is a cost effective and a chemically resistant alternative to cast iron valves.

### Backwater Valve

The quick action flapper allows unrestricted uni-directional flow. Elastomeric gasket in the flapper ensures a watertight seal. Flapper can be easily removed and replaced if required.

Threaded access cap is designed for hand tightening. Access cap neoprene gasket provides a positive seal. Valve hub outlets fit 2", 3", 4", or 6" DWV pipe and may be adapted to 2", 3", 4", or 6" sewer and drain pipe with NDS DWV to Sewer & Drain Adapters.

Lightweight, easy to install. Horizontal installation required, with arrows on top of the valve hub pointing in the direction of the flow of water. Access riser with cover offers a simple, economical access to the valve for inspection and maintenance. The riser may be cut to the desired length.



Item Number	A	B	C	Riser Height	Riser Dia.
275P, 275	2.18	5.03	3.53	16	4
275PR	2.18	5.03	3.53	16	4
375P, 375	3.51	7.56	6.10	16	6
375PR, 375R	3.51	7.56	6.10	16	6
475P, 475	4.47	11.18	7.18	16	8
475PR, 475R	4.47	11.18	7.18	16	8
675P, 675	5.50	15.25	9.90	16	10

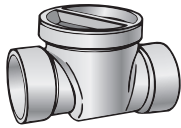


Approvals applicable to valve only.

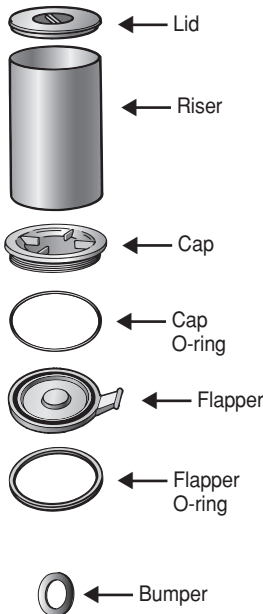
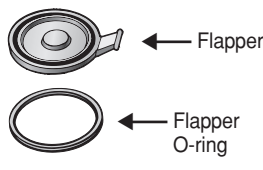
Note: All dimensions are nominal. All weights are for shipping purposes only. Availability is subject to change.

# DIVERTER AND BACKWATER VALVES

## Backwater Valve

	Part No.	Description	Color	Pkg. Qty.	Wt. Ea. (lbs.)	Product Class
	<b>PVC</b>					
	275P	2" PVC Backwater Valve	White	8	1	35PV
	275PR	2" PVC Backwater Valve with Riser and Cover	White	1	5.00	35PV
	375P	3" PVC Backwater Valve	White	6	2.33	35PV
	375PR	3" PVC Backwater Valve with Riser and Cover	White	1	5.00	35PV
	475P	4" PVC Backwater Valve	White	6	4.33	35PV
	475PR	4" PVC Backwater Valve with Riser	White	1	8.00	35PV
	675P	6" PVC Backwater Valve	White	1	9.00	35PV
	<b>ABS</b>					
	275	2" ABS Backwater Valve	Black	8	1	35AB
375	3" ABS Backwater Valve	Black	6	1.83	35AB	
375R	3" ABS Backwater Valve with Riser and Cover	Black	1	4.00	35AB	
475	4" ABS Backwater Valve	Black	6	3.33	35AB	
475R	4" ABS Backwater Valve with Riser and Cover	Black	1	7.00	35AB	
675	6" ABS Backwater Valve and Cover	Black	24	7.00	35AB	

## PVC Backwater Valve Components

	Part No.	Description	Color	Carton Qty.	Product Class
	8051-020-040	2" Lid	White	20	80CS
	822-040-16	2" Riser	White	4	80CS
	1530202	2" Cap	White	10	80CS
	880-237	2" Cap O'Ring	Black	10	80CS
	1530203	2" Flapper	White	10	80CS
	880-136	2" Flapper O'Ring	Black	10	80CS
	1530204	2" Back Water Valve Pipe Extension Collar	White	10	80CS
	8051-030-060	3" Lid	White	25	80CS
	822-060-16	3" Riser	White	2	80CS
	1530302	3" Cap	White	10	80CS
880-253	3" Cap O'Ring	Black	10	80CS	
1530303	3" Flapper	White	10	80CS	
880-234	3" Flapper O'Ring	Black	10	80CS	
1530304	3" Back Water Valve Pipe Extension Collar	White	10	80CS	
	8051-040-080	4" Lid	White	20	80CS
	822-080-16	4" Riser	White	1	80CS
	1530402	4" Cap	White	10	80CS
	880-364	4" Cap O'Ring	Black	10	80CS
	1530403	4" Flapper	White	10	80CS
	880-243	4" Flapper O'Ring	Black	10	80CS
	1530404	4" Back Water Valve Pipe Extension Collar	White	10	80CS
	8051-060-100	6" Lid	White	15	80CS
	1530602	6" Cap	White	2	80CS
	880-271	6" Cap O'Ring	Black	2	80CS
1530603	6" Flapper	White	5	80CS	
880-259	6" Flapper O'Ring	Black	5	80CS	
880-202	Bumper (fits all sizes of valves)	Black	1	80CS	
1530405	4" BWV Sewer Adapt Flange	White	1	80CS	
1530605	6" BWV Sewer Adapt Flange	White	1	80CS	

## Backwater Valve Box

	Part No.	Description	Color	Pkg. Qty.	Wt. Ea. (lbs.)	Product Class
	1219	12"x12" Backwater Valve Box	Black	4	5.75	10ND
	1220	12"x12" Valve Box Cover	Black	8	2.00	10ND

Note: All dimensions are nominal. All weights are for shipping purposes only. Availability is subject to change.

# SOLVENT WELD FITTINGS

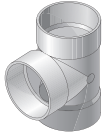
## Standards

Styrene A.S.T.M. D-2852  
PVC A.S.T.M. D-3034  
D-2751, D-2729

## Abbreviations Used for Connections

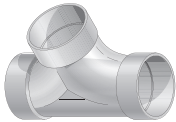
HUB = HUB Socket  
SPT = Spigot  
MPT = Male Pipe Thread  
FPT = Female Pipe Thread  
DWV = Drain, Waste and Vent  
S&D = Sewer and Drain

## Tee



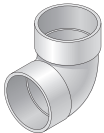
	Part No.	Description	Color	Pkg. Qty.	Wt. Ea. (lbs.)	Product Class
<b>PVC</b>	3P01	3" PVC Tee (HUB X HUB X HUB)	White	35	0.57	30PV
	4P01	4" PVC Tee (HUB X HUB X HUB)	White	20	0.95	30PV
	6P01	6" PVC Tee (HUB X HUB X HUB)	White	9	3.66	30PV
	64P01	6"X4" PVC Tee (HUB X HUB X HUB)	White	8	2.38	30PV
	8P01	8" PVC Tee (HUB X HUB X HUB)	White	2	3.00	30PV
	84P01	8"X4" PVC Tee (HUB X HUB X HUB)	White	7	4.72	30PV
	86P01	8"X6" PVC Tee (HUB X HUB X HUB)	White	3	5.00	30PV
<b>STYRENE</b>	301	3" Styrene Tee (HUB X HUB X HUB)	White	35	0.43	30ST
	401	4" Styrene Tee (HUB X HUB X HUB)	White	20	0.60	30ST
	601	6" Styrene Tee (HUB X HUB X HUB)	White	9	2.78	30ST

## Double Cleanout



	Part No.	Description	Color	Pkg. Qty.	Wt. Ea. (lbs.)	Product Class
<b>PVC</b>	417P	4" PVC Double Cleanout (HUB X HUB X HUB)	White	24	1.41	30PV

## 90 Degree Elbow



	Part No.	Description	Color	Pkg. Qty.	Wt. Ea. (lbs.)	Product Class
<b>PVC</b>	3P02	3" PVC 90 Degree Elbow (HUB X HUB)	White	40	0.40	30PV
	4P02	4" PVC 90 Degree Elbow (HUB X HUB)	White	25	0.68	30PV
	6P02	6" PVC 90 Degree Elbow (HUB X HUB)	White	6	3.00	30PV
	8P02	8" PVC 90 Degree Elbow (HUB X HUB)	White	4	6.50	30PV
<b>STYRENE</b>	302	3" Styrene 90 Degree Elbow (HUB X HUB)	White	40	0.33	30ST
	402	4" Styrene 90 Degree Elbow (HUB X HUB)	White	25	0.48	30ST
	602	6" Styrene 90 Degree Elbow (HUB X HUB)	White	6	2.33	30ST

## 90 Degree Long Turn Elbow



	Part No.	Description	Color	Pkg. Qty.	Wt. Ea. (lbs.)	Product Class
<b>PVC</b>	31P0	3" PVC 90 Degree Long Turn Elbow (HUB X HUB)	White	30	0.46	30PV
	41P0	4" PVC 90 Degree Long Turn Elbow (HUB X HUB)	White	20	0.85	30PV
<b>STYRENE</b>	310	3" Styrene 90 Degree Long Turn Elbow (HUB X HUB)	White	30	0.30	30ST
	410	4" Styrene 90 Degree Long Turn Elbow (HUB X HUB)	White	20	0.65	30ST

## 90 Degree Long Turn Street Elbow



	Part No.	Description	Color	Pkg. Qty.	Wt. Ea. (lbs.)	Product Class
<b>PVC</b>	31P0ST	3" PVC 90 Degree Long Turn Street Elbow (SPT X HUB)	White	20	0.90	30PV
	41P0ST	4" PVC 90 Degree Long Turn Street Elbow (SPT X HUB)	White	20	1.25	30PV
<b>STYRENE</b>	310ST	3" Styrene 90 Degree Long Turn Street Elbow (SPT X HUB)	White	20	0.65	30ST
	410ST	4" Styrene 90 Degree Long Turn Street Elbow (SPT X HUB)	White	20	1.00	30ST

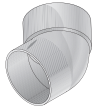
## 45 Degree Elbow



	Part No.	Description	Color	Pkg. Qty.	Wt. Ea. (lbs.)	Product Class
<b>PVC</b>	3P03	3" PVC 45 Degree Elbow (HUB X HUB)	White	40	0.32	30PV
	4P03	4" PVC 45 Degree Elbow (HUB X HUB)	White	30	0.53	30PV
	6P03	6" PVC 45 Degree Elbow (HUB X HUB)	White	8	2.12	30PV
	8P03	8" PVC 45 Degree Elbow (HUB X HUB)	White	6	4.33	30PV
<b>STYRENE</b>	303	3" Styrene 45 Degree Elbow (HUB X HUB)	White	40	0.25	30ST
	403	4" Styrene 45 Degree Elbow (HUB X HUB)	White	30	0.35	30ST
	603	6" Styrene 45 Degree Elbow (HUB X HUB)	White	8	1.63	30ST

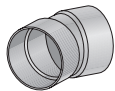
Note: All dimensions are nominal. All weights are for shipping purposes only. Availability is subject to change.

## 45 Degree Street Elbow



	Part No.	Description	Color	Pkg. Qty.	Wt. Ea. (lbs.)	Product Class
<b>PVC</b>	3P03ST	3" PVC 45 Degree Street Elbow (SPT X HUB)	White	30	0.33	30PV
	4P03ST	4" PVC 45 Degree Street Elbow (SPT X HUB)	White	30	0.86	30PV
	6P03ST	6" PVC 45 Degree Street Elbow (SPT X HUB)	White	10	1.80	30PV
<b>STYRENE</b>	303ST	3" Styrene 45 Degree Street Elbow (SPT X HUB)	White	30	0.27	30ST
	403ST	4" Styrene 45 Degree Street Elbow (SPT X HUB)	White	30	0.67	30ST

## 22 1/2 Degree Elbow



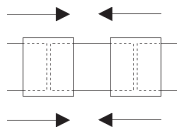
	Part No.	Description	Color	Pkg. Qty.	Wt. Ea. (lbs.)	Product Class
<b>PVC</b>	3P04	3" PVC 22 1/2 Degree Street Elbow (HUB X HUB)	White	25	0.32	30PV
	4P04	4" PVC 22 1/2 Degree Street Elbow (HUB X HUB)	White	20	0.45	30PV
	6P04	6" PVC 22 1/2 Degree Street Elbow (HUB X HUB)	White	20	1.60	30PV
<b>STYRENE</b>	304	3" Styrene 22 1/2 Degree Street Elbow (HUB X HUB)	White	25	0.24	30ST
	404	4" Styrene 22 1/2 Degree Street Elbow (HUB X HUB)	White	20	0.30	30ST

## Coupling



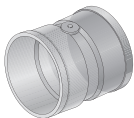
	Part No.	Description	Color	Pkg. Qty.	Wt. Ea. (lbs.)	Product Class
<b>PVC</b>	3P05	3" PVC Coupling (HUB X HUB)	White	120	0.22	30PV
	4P05	4" PVC Coupling (HUB X HUB)	White	45	0.37	30PV
	6P05	6" PVC Coupling (HUB X HUB)	White	10	1.30	30PV
	8P05	8" PVC Coupling (HUB X HUB)	White	6	3.33	30PV
<b>STYRENE</b>	305	3" Styrene Coupling (HUB X HUB)	White	120	0.17	30ST
	405	4" Styrene Coupling (HUB X HUB)	White	45	0.30	30ST
	605	6" Styrene Coupling (HUB X HUB)	White	10	0.89	30ST

## Sewer and Drain Repair Coupling



	Part No.	Description	Color	Pkg. Qty.	Wt. Ea. (lbs.)	Product Class
<b>PVC</b>	3P05R	3" PVC Sewer and Drain Repair Coupling (HUB X HUB)	White	60	0.25	30PV
	4P05R	4" PVC Sewer and Drain Repair Coupling (HUB X HUB)	White	45	0.46	30PV

## 5 Degree Angle Coupling



	Part No.	Description	Color	Pkg. Qty.	Wt. Ea. (lbs.)	Product Class
<b>PVC</b>	4P05A	4" PVC 5 Degree Angle Coupling (HUB X HUB)	White	40	0.60	30PV

## Reducer Bushing (SPTxHUB)



	Part No.	Description	Color	Pkg. Qty.	Wt. Ea. (lbs.)	Product Class
<b>PVC</b>	3P07	4"X3" PVC Reducer Bushing (SPTxHUB) (SPT X HUB)	White	20	0.45	30PV
	6P07S	6"X4" PVC Reducer Bushing (SPTxHUB) (SPT X HUB)	White	20	1.10	30PV
<b>STYRENE</b>	307	4"X3" Styrene Reducer Bushing (SPTxHUB) (SPT X HUB)	White	20	0.35	30ST

## Reducer Coupling

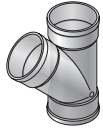


	Part No.	Description	Color	Pkg. Qty.	Wt. Ea. (lbs.)	Product Class
<b>PVC</b>	4P07	4"X3" PVC Reducer Coupling (HUB X HUB)	White	30	0.36	30PV
	6P07	4"X6" PVC Reducer Coupling (HUB X HUB)	White	20	1.10	30PV
	8P07	8"X6" PVC Reducer Coupling (HUB X HUB)	White	1	3.00	30PV
<b>STYRENE</b>	407	4"X3" Styrene Reducer Coupling (HUB X HUB)	White	30	0.30	30ST
	607	4"X6" Styrene Reducer Coupling (HUB X HUB)	White	20	0.80	30ST

Note: All dimensions are nominal. All weights are for shipping purposes only. Availability is subject to change.

# SOLVENT WELD FITTINGS

## 45 Degree Wye



	Part No.	Description	Color	Pkg. Qty.	Wt. Ea. (lbs.)	Product Class
<b>PVC</b>	3P08	3" PVC 45 Degree Wye (HUB X HUB X HUB)	White	25	0.88	30PV
	4P08	4" PVC 45 Degree Wye (HUB X HUB X HUB)	White	20	1.25	30PV
	6P08	6" PVC 45 Degree Wye (HUB X HUB X HUB)	White	6	4.66	30PV
	64P08	6"X4" PVC 45 Degree Wye (HUB X HUB X HUB)	White	8	2.88	30PV
	8P08	8" PVC 45 Degree Wye (HUB X HUB X HUB)	White	2	11.00	30PV
	84P08	8"X4" PVC 45 Degree Wye (HUB X HUB X HUB)	White	6	5.33	30PV
	86P08	8"X6" PVC 45 Degree Wye (HUB X HUB X HUB)	White	3	3.33	30PV
	<b>STYRENE</b>	308	3" Styrene 45 Degree Wye (HUB X HUB X HUB)	White	25	0.72
408		4" Styrene 45 Degree Wye (HUB X HUB X HUB)	White	20	1.00	30ST
608		6" Styrene 45 Degree Wye (HUB X HUB X HUB)	White	6	3.67	30ST

## Sanitary Tee



	Part No.	Description	Color	Pkg. Qty.	Wt. Ea. (lbs.)	Product Class
<b>PVC</b>	3P09	3" PVC Sanitary Tee (HUB X HUB X HUB)	White	30	0.66	30PV
	4P09	4" PVC Sanitary Tee (HUB X HUB X HUB)	White	20	1.60	30PV
	6P09	6" PVC Sanitary Tee (HUB X HUB X HUB)	White	5	4.20	30PV
	8P09	8" PVC Sanitary Tee (HUB X HUB X HUB)	White	1	15.00	30PV
<b>STYRENE</b>	309	3" Styrene Sanitary Tee (HUB X HUB X HUB)	White	30	0.53	30ST
	409	4" Styrene Sanitary Tee (HUB X HUB X HUB)	White	20	1.25	30ST

## Drain Cap



	Part No.	Description	Color	Pkg. Qty.	Wt. Ea. (lbs.)	Product Class
<b>PVC</b>	3P06	3" PVC Drain Cap	White	25	0.20	30PV
	4P06	4" PVC Drain Cap	White	25	0.28	30PV
	6P06	6" PVC Drain Cap	White	15	0.93	30PV
	8P06	8" PVC Drain Cap	White	10	2.40	30PV
<b>STYRENE</b>	306	3" Styrene Drain Cap	White	25	0.16	30ST
	406	4" Styrene Drain Cap	White	25	0.30	30ST
	606	6" Styrene Drain Cap	White	15	0.73	30ST

## Female Adapter



	Part No.	Description	Color	Pkg. Qty.	Wt. Ea. (lbs.)	Product Class
<b>PVC</b>	3P11	3" PVC Female Adapter (HUB X FPT)	White	25	0.36	30PV
	4P11	4" PVC Female Adapter (HUB X FPT)	White	20	0.55	30PV
	613P	6" PVC Female Adapter (HUB X FPT)	White	24	1.08	30PV
<b>STYRENE</b>	311	3" Styrene Female Adapter (HUB X FPT)	White	25	0.15	30ST
	411	4" Styrene Female Adapter (HUB X FPT)	White	20	0.45	30ST

## Fitting Cleanout



	Part No.	Description	Color	Pkg. Qty.	Wt. Ea. (lbs.)	Product Class
<b>PVC</b>	413P	4" PVC Fitting Cleanout (SPT X FPT)	White	20	0.50	30PV
<b>STYRENE</b>	413	4" Styrene Fitting Cleanout (SPT X FPT)	White	20	0.40	30ST

## MPT Plug



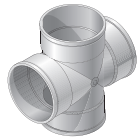
	Part No.	Description	Color	Pkg. Qty.	Wt. Ea. (lbs.)	Product Class
<b>PVC</b>	41P8	4" PVC MPT Plug	White	30	0.36	30PV
	61P8	6" PVC MPT Plug	White	24	0.62	30PV
<b>STYRENE</b>	418	4" Styrene MPT Plug	White	30	0.27	30ST

Note: All dimensions are nominal. All weights are for shipping purposes only. Availability is subject to change.



# SOLVENT WELD FITTINGS

## Cross



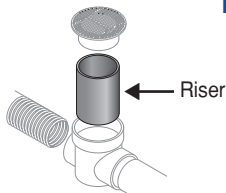
	Part No.	Description	Color	Pkg. Qty.	Wt. Ea. (lbs.)	Product Class
<b>PVC</b>	4P1X	4" PVC Cross (HUB X HUB X HUB X HUB)	White	20	1.40	30PV
<b>STYRENE</b>	401X	4" Styrene Cross (HUB X HUB X HUB X HUB)	White	20	1.20	30ST

## Corrugated Adapter



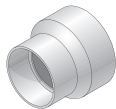
	Part No.	Description	Color	Pkg. Qty.	Wt. Ea. (lbs.)	Product Class
	351	3" Polyethylene Corrugated Adapter (CORR HUB X S&D SPT or HUB)	Black	50	0.10	30ST
	451	4" Polyethylene Corrugated Adapter (CORR HUB X S&D SPT or HUB)	Black	25	0.20	30ST
	651	6" Polyethylene Corrugated Adapter (HUB X S&D SPT)	Black	12	0.25	30ST

## Riser Pipe



	Part No.	Description	Color	Pkg. Qty.	Wt. Ea. (lbs.)	Product Class
<b>PVC</b>	66*	6"X2' PVC Riser Pipe (6 in. X 2 ft.)	Black	4	4.70	30AB

## DWV to Sewer and Drain Adapter



	Part No.	Description	Color	Pkg. Qty.	Wt. Ea. (lbs.)	Product Class
<b>PVC</b>	3P12	3"X4" PVC DWV to Sewer and Drain Adapter (DWV HUB X S&D HUB)	White	50	0.50	30PV
	3P15	3"X3" PVC DWV to Sewer and Drain Adapter (DWV HUB X S&D HUB)	White	60	0.41	30PV
	3P16	4"X4" PVC DWV to Sewer and Drain Adapter (DWV HUB X S&D HUB)	White	30	0.80	30PV
	3P17	3"X4" PVC DWV to Sewer and Drain Adapter (DWV HUB X S&D SPT)	White	30	0.50	30PV

## DWV to Sewer and Drain Adapter Bushing



	Part No.	Description	Color	Pkg. Qty.	Wt. Ea. (lbs.)	Product Class
<b>PVC</b>	2P41	3" PVC DWV to S&D Adapter Bushing (DWV SPT X S&D HUB)	White	50	0.12	30PV
	2P42	4" PVC DWV to S&D Adapter Bushing (DWV SPT X S&D HUB)	White	25	0.24	30PV
	2P43	6" PVC DWV to S&D Adapter Bushing (DWV SPT X S&D HUB)	White	20	0.70	30PV

## Reducer Bushing (SCH.40 HUBxS&D SPT)



	Part No.	Description	Color	Pkg. Qty.	Wt. Ea. (lbs.)	Product Class
<b>PVC</b>	532	2"X3" PVC Reducer Bushing (SCH 40 HUB X S&D SPT)	White	20	0.20	30PV
	533	2"X4" PVC Reducer Bushing (SCH 40 HUB X S&D SPT)	White	20	0.35	30PV

## Reducer Bushing (6 inch S&D SPT)



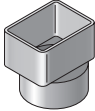
	Part No.	Description	Color	Pkg. Qty.	Wt. Ea. (lbs.)	Product Class
<b>STYRENE</b>	643	6"X4"X3" Styrene Reducer Bushing (6" S&D SPT)	Black	20	0.75	30ST

Note: All dimensions are nominal. All weights are for shipping purposes only. Availability is subject to change.

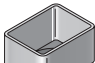
# SOLVENT WELD FITTINGS

## Down Spout Adapter

### PVC for Standard Sewer and Drain Pipe


	Part No.	Description	Color	Pkg. Qty.	Wt. Ea. (lbs.)	Product Class	
	<b>PVC</b>	9P03	2"X3"X3" Offset Down Spout Adapter (Fits 3" pipe)	White	40	0.42	30PV
		9P04	2"X3"X4" Offset Down Spout Adapter (Fits 4" pipe)	White	30	0.53	30PV
		9P06	3"X4"X4" Down Spout Adapter (Fits 4" pipe)	White	30	0.50	30PV
		9P10	4"X6"X6" Offset Down Spout Adapter (Fits 6" pipe)	White	8	1.00	30PV
	<b>STYRENE</b>	903	2"X3"X3" Offset Down Spout Adapter (Fits 3" pipe)	White	40	0.33	30ST
		904	2"X3"X4" Offset Down Spout Adapter (Fits 4" pipe)	White	30	0.40	30ST
		906	3"X4"X4" Down Spout Adapter (Fits 4" pipe)	White	30	0.40	30ST

### PVC for DWV or Sch. 40 Pipe


	Part No.	Description	Color	Pkg. Qty.	Wt. Ea. (lbs.)	Product Class	
	<b>PVC</b>	9P07	2"X3"X3" Down Spout Adapter (Fits 3" pipe)	White	40	0.30	30PV
		9P08	2"X3"X4" Down Spout Adapter (Fits 4" pipe)	White	30	1.10	30PV
		9P09	3"X4"X4" Down Spout Adapter (Fits 4" pipe)	White	30	0.44	30PV

## Pool Accessories

### Drain Grate

	Part No.	Description	Color	Pkg. Qty.	Wt. Ea. (lbs.)	Product Class	
	<b>PVC</b>	9P12	3" PVC Drain Grate (S&D SPT)	White	50	0.16	30PV
		9P11	4" PVC Drain Grate (S&D SPT)	White	25	0.36	30PV
	<b>STYRENE</b>	912	3" Styrene Drain Grate (S&D SPT)	White	50	0.12	30ST
		911	4" Styrene Drain Grate (S&D SPT)	White	25	0.24	30ST


### Deck Drain

	Part No.	Description	Color	Pkg. Qty.	Wt. Ea. (lbs.)	Product Class	
	<b>STYRENE</b>	WC100	3" Styrene Deck Drain (3" S&D HUB)	White	50	0.16	30ST
		WC100G	3" Styrene Deck Drain (3" S&D HUB)	Gray	50	0.16	30ST
		WC100T	3" Styrene Deck Drain (3" S&D HUB)	Tan	50	0.16	30ST

### Deck Drain Adapter

	Part No.	Description	Color	Pkg. Qty.	Wt. Ea. (lbs.)	Product Class	
	<b>STYRENE</b>	WC150	2" Styrene Deck Drain Adapter (2" SCH. 40 HUB)	White	10	0.70	30ST

### Pool Back Flush Fitting

	Part No.	Description	Color	Pkg. Qty.	Wt. Ea. (lbs.)	Product Class	
		650	4" Polyethylene Pool Back Flush Fitting (Includes 4" grate.)	Black	35	0.16	30ST

Note: All dimensions are nominal. All weights are for shipping purposes only. Availability is subject to change.

# NDS FLEXIBLE COUPLINGS AND CONNECTORS

---

- Choose the high-quality couplings and connectors that easily adapt to any situation.
- Innovative, flexible couplings for sewer, drain, waste and vent piping allow any two pipes to be connected quickly and easily.
- Dimensional flexibility ensures leakproof seals with virtually any pipe material.
- Utility and plumbing applications.

## Details

---

- Couplings and connectors fit over the ends of plain-end or spigot pipe to form a positive seal against infiltration and exfiltration in non-pressure environments.
- Durable PVC construction allows couplings to flex with normal earth movement.
- Completely unaffected by soil conditions and resistant to chemicals, UV rays and normal sewer gases.

## Materials and Standards

---

- Flexible couplings are made of elastometric polyvinyl chloride (PVC) for long-lasting performance and durability.
- Bactericides and fungicides are added to PVC for extra protection.
- All NDS clamps, including the band and housing, are made from series 300 stainless steel, offering corrosion-resistant, rust-proof reliability.
- NDS Flexible Couplings have listings from the following code agencies: ICC (International Code Council), CSA (Canadian Standards Association) and IAPMO (International Association of Plumbing and Mechanical Officials).

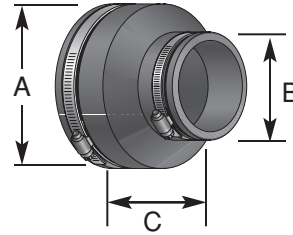
## Installation

---

- Clamps install easily with a screwdriver, 5/16" nut driver or socket to 60" pounds torque.
- All couplings are marked with size and pipe materials that the coupling will connect, eliminating guesswork on the job.

# NDS FLEXIBLE COUPLING SIZING CHART

- All dimensions given in inches and mm.
- Couplings available to connect 1-1/4" to 15" pipe.
- 300 Series stainless steel clamps supplied with all couplings.
- All couplings will fit any pipe type within +/- 5% OD on chart
- \* Denotes couplings supplied with reducer.



## Clay to Clay

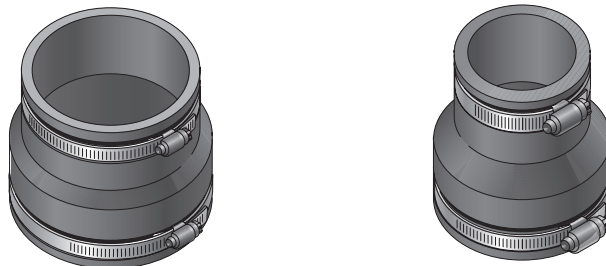
Part Number	A		B		C		Pkg. Qty.	Weight	Product Class
	Inches	mm	Inches	mm	Inches	mm			
01-44	5.25	133	5.25	133	4.00	101	18	1.27	45CO
01-55	USE PART NO. 56-66								
01-66	7.52	191	7.52	191	6.00	152	12	2.33	45CO
01-88	9.65	245	9.65	245	6.00	152	9	3.11	45CO

## Clay to Cast Iron or Plastic

Part Number	A		B		C		Pkg. Qty.	Weight	Product Class
	Inches	mm	Inches	mm	Inches	mm			
02-43	5.25	133	3.38	85	4.00	101	36	1.25	45CO
02-E44	5.25	133	4.38	111	4.00	101	24	1.45	45CO
02-44	5.25	133	4.38	111	4.00	101	24	1.04	45CO
02-E46	5.25	133	6.38	162	6.00	152	9	2.11	45CO
02-55	USE PART NO. 56-65								
02-E64	7.38	187	4.38	111	6.00	152	9	2.44	45CO
02-64	7.38	187	4.38	111	6.00	152	12	2.50	45CO
02-E66	7.38	187	6.38	162	6.00	152	12	2.38	45CO
02-66	7.38	187	6.38	162	6.00	152	18	2.38	45CO
02-86	9.65	245	6.38	162	6.00	152	8	3.12	45CO
02-88	9.65	245	8.50	215	6.00	152	6	3.16	45CO
02-1010	11.80	299	10.60	269	6.00	152	3	4.00	45CO
02-1212	14.38	365	12.60	320	6.00	152	5	5.20	45CO
02-1515	17.85	453	15.40	391	6.00	152	5	6.00	45CO

## Concrete to Cast Iron or Plastic

Part Number	A		B		C		Pkg. Qty.	Weight	Product Class
	Inches	mm	Inches	mm	Inches	mm			
06-44	5.62	142	4.38	111	4.00	101	18	1.66	45CO
06-44W	5.62	142	4.38	111	4.00	101	18	1.67	45CO
06-64	7.80	198	4.38	111	6.00	152	12	2.41	45CO
06-66	7.80	198	6.38	162	6.00	152	12	2.58	45CO
06-88	10.25	260	8.50	215	6.00	152	6	3.33	45CO



Note: All dimensions are nominal. All weights are for shipping purposes only. Availability is subject to change.

# NDS FLEXIBLE COUPLING SIZING CHART

## Asbestos Cement, Fibre, or Ductile Iron to Cast Iron or Plastic

Part Number	A		B		C		Pkg. Qty.	Weight	Product Class
	Inches	mm	Inches	mm	Inches	mm			
51-44	4.75	120	4.38	111	4.00	101	24	1.08	45CO
51-66	7.00	177	6.38	162	6.00	152	15	2.73	45CO

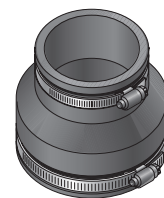
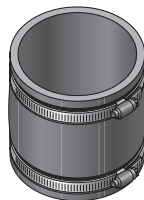
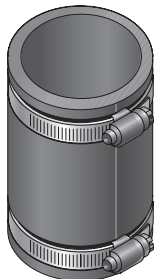
## Asbestos Cement, Fibre, or Ductile Iron to Asbestos Cement, Fibre, or Ductile Iron

Part Number	A		B		C		Pkg. Qty.	Weight	Product Class
	Inches	mm	Inches	mm	Inches	mm			
55-44	4.75	120	4.75	120	6.00	152	14	1.57	45CO

## Cast Iron, Plastic, Copper, Steel, or Lead to Cast Iron, Plastic, Copper, Steel or Lead

Part Number	A		B		C		Pkg. Qty.	Weight	Product Class	
	Inches	mm	Inches	mm	Inches	mm				
56-125	1.65	40	1.65	40	4.00	101	90	0.36	45CO	
56-150/125	1.90	48	1.65	40	4.00	101	75	0.41	45CO	
56-150	1.90	48	1.90	48	4.00	101	75	0.41	45CO	
56-2150	2.40	60	1.90	48	4.00	101	54	0.51	45CO	
56-22	2.40	60	2.40	60	4.00	101	54	0.50	45CO	
56-32	3.38	85	2.40	60	4.00	101	45	0.71	45CO	
56-33	3.38	85	3.38	85	4.00	101	45	0.75	45CO	
56-33W	3.38	85	3.38	85	4.00	101	45	0.76	45CO	
56-42	4.38	111	2.40	60	4.00	101	30	0.93	45CO	
56-E43	4.38	111	3.38	85	4.00	101	24	1.37	45CO	
56-43	4.38	111	3.38	85	4.00	101	25	1.08	45CO	
56-43W	4.38	111	3.38	85	4.00	101	25	0.83	45CO	
56-44	4.42	112	4.42	112	4.00	101	24	1.66	45CO	
56-44W	4.42	112	4.42	112	4.00	101	24	1.17	45CO	
56-54	USE PART NO. 06-44									
56-55	5.62	142	5.62	142	4.00	101	18	1.38	45CO	
56-63	6.38	162	3.38	85	6.00	152	12	1.67	45CO	
56-E64	6.38	162	4.38	111	6.00	152	10	2.20	45CO	
56-64	6.38	162	4.38	111	6.00	152	12	2.16	45CO	
56-65	6.38	162	5.62	142	6.00	152	18	1.66	45CO	
56-66	6.38	162	6.38	162	6.00	152	15	2.13	45CO	
* 56-84	8.50	215	4.38	111	6.00	152	12	5.00	45CO	
56-E86	8.50	215	6.38	162	6.00	152	6	3.16	45CO	
56-86	8.50	215	6.38	162	6.00	152	8	3.37	45CO	
56-88	8.50	215	8.50	215	6.00	152	12	3.50	45CO	
* 56-108	10.60	269	8.50	215	6.00	152	2	6.00	45CO	
56-1010	10.60	269	10.60	269	7.00	178	2	6.00	45CO	
56-1212	12.83	326	12.83	326	6.00	152	3	5.00	45CO	
56-1515	15.40	391	15.40	391	6.00	152	3	9.00	45CO	

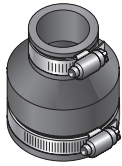
\*Denotes coupling supplied with reducer.



# NDS FLEXIBLE COUPLING SIZING CHART

## Drain and Trap Connectors

NDS Drain & Trap Connectors are ideal for new installation, alterations and repairs. These Connectors offer a quick, low-cost alternative to gluing or soldering and eliminate the need for special tools or threading. Simply place the ends over the pipes and tighten the stainless steel clamps.



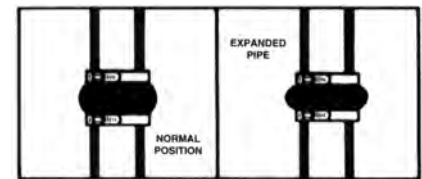
Part No.	Description	Color	Pkg. Qty.	Wt. Ea. (lbs.)	Product Class
57-125	1 1/4" or 1 1/2" Drain Piping x 1 1/4" or 1 1/2" Drain Piping	Black	180	0.17	45CO
57-125/125	1 1/4" DWV or 1 1/2" Copper x 1 1/4" or 1 1/2" Drain Piping	Black	140	0.22	45CO
57-150/125	1 1/2" DWV or 1 1/2" Copper x 1 1/4" or 1 1/2" Drain Piping	Black	120	0.25	45CO
57-2150	2" DWV x 1 1/4" or 1 1/2" Drain Piping	Black	140	0.27	45CO

## Large Diameter Couplings

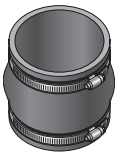
Large Diameter couplings are available through NDS. The large couplings are engineered for use with all the common pipe material: clay, concrete, cast iron, plastic, fiberglass, ductile iron, and asbestos/cement. When ordering please remember to provide the exact O.D. size in inches for both pipes. A difference of 6" between the two pipe O.D. sizes cannot be made. Please call for details 1-800-726-1994.

## Expansion Joints

NDS flexible expansion joints have a one-piece design which allows for the thermal contraction and expansion of drain, waste and vent. These couplings are maintenance free and rust-proof. They are secured by series 300 stainless steel clamps. NDS expansion joints are made of tough elastomeric polyvinyl chloride (PVC). They are strong and resilient. Available in 2" and 3" sizes.



Part No.	Description	Color	Pkg. Qty.	Wt. Ea. (lbs.)	Product Class
XJ2	2" Expansion Joints	Black	36	0.53	45CO
XJ3	3" Expansion Joints	Black	24	0.67	45CO



## Clamps for Flexible Couplings

Part No.	CLAMP MIN & MAX DIAMETERS & OVERALL LENGTH			Color	Weight	PkgQty	Product Class
	MAX DIA.	MIN DIA	LENGTH				
33H020 CLAMP	1.75"	.75"	6-1/2"	Stainless Steel	0.05	500	45CO
33H032 CLAMP	2.50"	1.00"	8-3/4"	Stainless Steel	0.05	400	45CO
33H040 CLAMP	3.00"	2.06"	10-3/8"	Stainless Steel	0.05	400	45CO
33H056 CLAMP	4.00"	1.00"	13-1/2"	Stainless Steel	0.10	300	45CO
33H080 CLAMP	5.50"	2.57"	18-1/4"	Stainless Steel	0.10	200	45CO
33H088 CLAMP	6.00"	2.00"	19-3/4"	Stainless Steel	0.10	200	45CO
33H104 CLAMP	7.00"	2.00"	23"	Stainless Steel	0.10	100	45CO
33H116 CLAMP	7.75"	1.75"	25"	Stainless Steel	0.10	100	45CO
33H132 CLAMP	8.75"	6.75"	28-3/4"	Stainless Steel	0.15	100	45CO
33H152 CLAMP	10.00"	4.00"	32-3/8"	Stainless Steel	0.15	100	45CO
33H164 CLAMP	10.75"	1.75"	34-5/8"	Stainless Steel	0.15	100	45CO
33H188 CLAMP	12.25"	6.25"	39-1/2"	Stainless Steel	0.15	100	45CO
33H212 CLAMP	13.75"	11.75"	44"	Stainless Steel	0.20	100	45CO
33H250 CLAMP	12.62"	8.75"	40-1/2"	Stainless Steel	0.25	100	45CO
33S248 CLAMP	16"	3.625"	51-1/2"	Stainless Steel	0.25	100	45FS

Note: All dimensions are nominal. All weights are for shipping purposes only. Price (U.S. Dollars) and availability are subject to change.


# NDS CONNECTORS AND O-RINGS

NDS Connectors for sewer pipe joints and drain waste & vent piping allow several points of seal between most types of sockets, hubs, bells and spigots. NDS Connectors are donut-shaped rings made of tough elastomeric polyvinyl chloride (pvc) and are available in a range of sizes up to 6". They install quickly and easily and offer the dimensional flexibility that ensures leak proof seals. They are also resistant to chemicals, fungus growth and normal sewer gases due to the inert nature and physical properties of the material. NDS O-Rings provide a quick and easy connection between most 4" house pipe and 6" sewer pipe.

NOTE: Connectors may not perform as intended due to improper or insufficient description of the pipes being connected or changes in pipe dimensions or design by the various manufacturers.

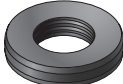
## SV Cast Iron Connectors

Part No.	Description	Color	Pkg. Qty.	Wt. Ea. (lbs.)	Product Class
44U-405	4" x 4" SV HUB x Sch40 (DWV) or Sch40 Steel or C.I.XH	Black	35	0.48	45CO




## Clay O-Ring-Superior O-Ring

Part No.	Description	Color	Pkg. Qty.	Wt. Ea. (lbs.)	Product Class
696-301	6" x 3" Clay Bell x C.I.SV or C.I.NH or ABS/PVC S&D	Black	10	3.20	45CO
696-305	6" x 3" Clay Bell x C.I.XH or ABS/PVC DWV	Black	10	3.10	45CO
696-401	6" x 4" Clay Bell x CSV or C.I.NH or S&D	Black	10	3.00	45CO
696-405	6" x 4" Clay Bell x C.I.XH or ABS/PVC DWV	Black	10	2.40	45CO



## Asbestos Cement Connectors-John Manville and Capco

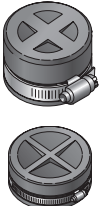
Part No.	Description	Color	Pkg. Qty.	Wt. Ea. (lbs.)	Product Class
44U-305	4" x 3" SW Duplex Adapter x C.I.XH or ABS/PVC DWV	Black	35	1.22	45CO
44U-405	4" x 4" SW Duplex Adapter x C.I.XH or ABS/PVC DWV	Black	35	0.48	45CO



## Clean Out or Test Caps

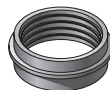
NDS Clean Out or Test Caps are designed to fit drain, waste, and vent pipe materials. The 1-1/2" thru 4" NDS Caps are designed to fit schedule 40 nominal pipe sizes. The 6" thru 10" NDS Caps are designed to fit SDR 35 nominal pipe sizes. Our caps offer a quick and easy way to cap pipe ends and cleanouts. The reinforced convex face allows the cap to withstand greater pressure for testing and minimize ballooning. They are also low cost and reusable.

Part No.	Description	Color	Pkg. Qty.	Wt. Ea. (lbs.)	Product Class
150	1 1/2" Cap	Black	100	0.19	45CP
102	2" Cap	Black	100	0.21	45CP
103	3" Cap	Black	50	0.90	45CP
104	4" Cap	Black	50	0.44	45CP
105	5" Cap	Black	24	0.87	45CP
106	6" Cap	Black	24	0.95	45CP
108	8" Cap	Black	16	1.81	45CP
110	10" Cap	Black	10	2.20	45CP



## Concrete Manhole Cover Adapters

NDS Concrete Manhole Adapters are made of elastomeric polyvinyl Chloride (pvc) and are available for 4", 6", 8", 10", and 12" pipe. Our adapters help eliminate leaks around pipe entering manhole walls and are flexible enough to permit some lateral pipe movement without compromising the integrity of the seal. However, NDS does not warrant this product as a positive water seal due to the many varying factors that can influence the products effectiveness as a positive seal, such as: field conditions, quality of grout, workmanship and high ground water tables.



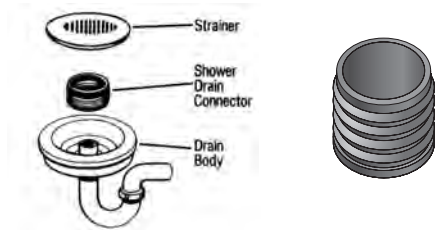
Part No.	Description	Color	Pkg. Qty.	Wt. Ea. (lbs.)	Product Class
4MA	4" Manhole Adapter	Black	24	1.00	45CO
6MA	6" Manhole Adapter	Black	24	0.62	45CO
8MA	8" Manhole Adapter	Black	14	1.00	45CO
12MA	12" Manhole Adapter	Black	6	1.50	45CO

Note: All dimensions are nominal. All weights are for shipping purposes only. Availability is subject to change.

# NDS CONNECTORS AND O-RINGS

## Shower Drain Connectors

NDS Shower Drain Connectors are made of elastomeric polyvinyl chloride (pvc) and are designed as a one-piece solution to reduce time and cost on installation. No special tools are required and the need for caulking, gluing, or threading is eliminated. They are designed to connect 2" D.W.V. plastic, steel, Schedule 40 or X.H. cast iron pipe to shower drain bodies.



Part No.	Description	Color	Pkg. Qty.	Wt. Ea. (lbs.)	Product Class
SDC-200	2" Shower Drain Connector	Black	140	0.14	45CO

## CORRUGATED FITTINGS

### Wye

Part No.	Description	Color	Pkg. Qty.	Product Class
3C08	3" Corrugated Wye Fitting	Black	16	30PE
4C08	4" Corrugated Wye Fitting	Black	16	30PE
6C08	6" Corrugated Wye Fitting	Black	5	30PE

### Tee

Part No.	Description	Color	Pkg. Qty.	Product Class
3C01	3" Corrugated Tee Fitting	Black	25	30PE
4C01	4" Corrugated Tee Fitting	Black	13	30PE
6C01	6" Corrugated Tee Fitting	Black	8	30PE

### Elbow

Part No.	Description	Color	Pkg. Qty.	Product Class
3C02	3" Corrugated Elbow Fitting	Black	17	30PE
4C02	4" Corrugated Elbow Fitting	Black	12	30PE
6C02	6" Corrugated Elbow Fitting	Black	6	30PE

### Coupling

Part No.	Description	Color	Pkg. Qty.	Product Class
3C05	3" Corrugated Coupling	Black	60	30PE
4C05	4" Corrugated Coupling	Black	36	30PE
6C05	6" Corrugated Coupling	Black	12	30PE

### End Cap

Part No.	Description	Color	Pkg. Qty.	Product Class
3C06	3" Corrugated End Cap	Black	33	30PE
4C06	4" Corrugated End Cap	Black	32	30PE
6C06	6" Corrugated End Cap	Black	15	30PE

### Down Spout Adapter

Part No.	Description	Color	Pkg. Qty.	Product Class
234CDS	2"x3"x4" Corrugated Down Spout Adapter	black	24	30PE
344CDS	3"x4"x4" Corrugated Down Spout Adapter	black	24	30PE

Note: All dimensions are nominal. All weights are for shipping purposes only. Availability is subject to change.



# NDS FLEXIBLE SADDLES

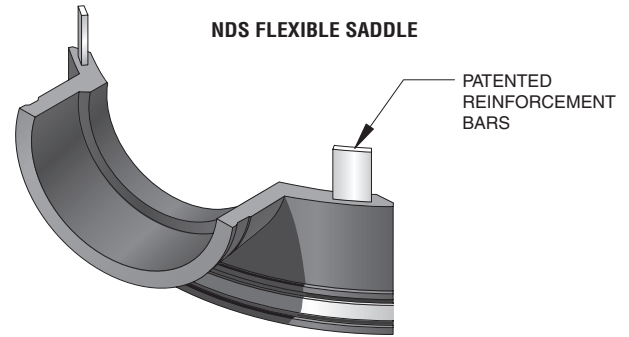
## NDS Flexible Saddle

For superior durability and flexibility, saddle up.

A breakthrough in saddle design, the patented NDS Flexible Saddle demonstrates superior flexibility in more than one way. The saddle's elastomeric construction allows a single description to securely fit 6" sewer main pipe diameters and up. The saddle's flexibility eliminates the need for a large inventory of rigid PVC saddles of various descriptions.

### NDS Flexible Saddle offers the following product benefits:

- Two configurations, a "Tee" and a "Wye" are available in 4" or 6" inlet descriptions
- Elastomeric construction provides maximum strength and flexibility
- Saddle design will accommodate polyethylene pipe used in slip lining sewer systems
- Inlet range from SCH-40 down to SDR-35 includes standard weight soil pipe
- Stainless steel series 300 clamps ensure tight seal
- Steel reinforced edges prevent distortion when torque is applied to clamps
- Durable design and low unit price make the Flexible Saddle economical and environmentally wise
- Available saddle blanket, attached to pipe prior to saddle installation, will mend imperfections and cracks on clay pipe taps



## NDS Flexible Saddles

	Part No.	Description	Color	Pkg. Qty.	Wt. Ea. (lbs.)	Product Class
	4T/C	4" Tees w/ Clamps	Black	12	3.16	45FS
	4T/WOC	4" Tees w/o Clamps	Black	12	2.66	45FS
	4Y/C	4" Wyes w/ Clamps	Black	6	7.66	45FS
	4Y/WOC	4" Wyes w/o Clamps	Black	6	7.12	45FS
	6T/C	6" Tees w/ Clamps	Black	6	6.50	45FS
	6T/WOC	6" Tees w/o Clamps	Black	6	6.00	45FS
	6Y/C	6" Wyes w/ Clamps	Black	4	12.25	45FS

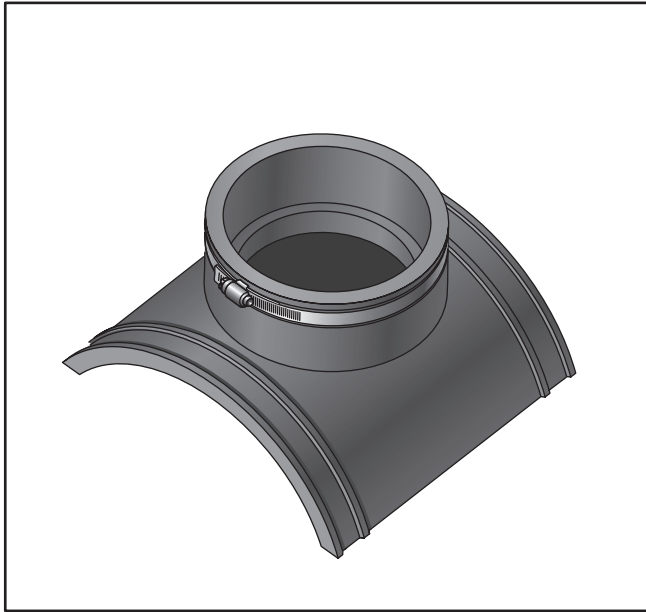
## Saddle Clamps

Part No.	Description	Color	Pkg. Qty.	Wt. Ea. (lbs.)	Product Class
33S248 CLAMP	Clamp for Flexible Coupling	Stainless Steel	100	0.25	45FS

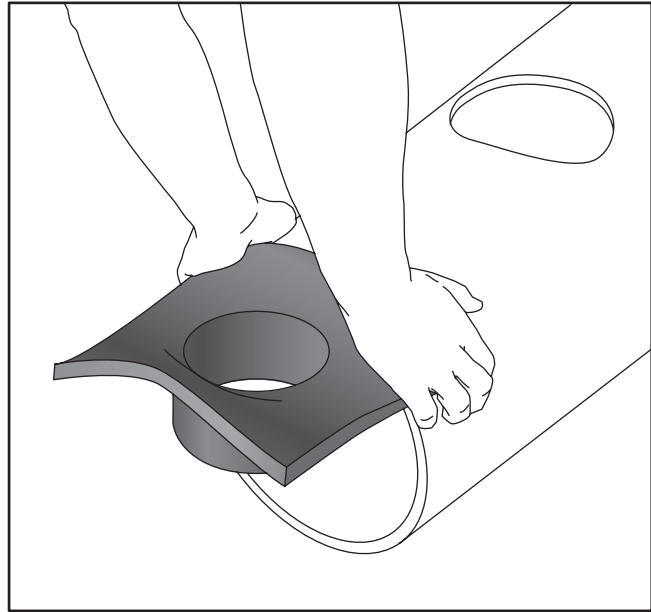
## ASTM Material Specification

Test	NDS Material	ASTM Test Material
Chemical Resistance 1N sulfuric acid 1N hydrochloric acid	No weight loss No weight loss	D543
Tensile Strength Elongation	1000 psi (7/Mpa) min; 200% min. elongation @ break	D412 Die "C"
Duration Hardness	Shore durometer 50 min. to 75 max	D2240
Compression Set	30% max of original deflection	D395, Method B Type 2
Water Absorption	5% max	D471, immersed 7 days @158 Method A
Ozone Resistance	No visible cracking under 7x magnification	D1149, D518 Method A
Oven Aging	75% min of original tensile strength. 65% min of original elongation	D573 (158°F for 70 hours)
Cold Brittleness	Cold brittleness was determined to be -43°C	D476
Tear Strength	125 lbs./in.	D624 Die "C"

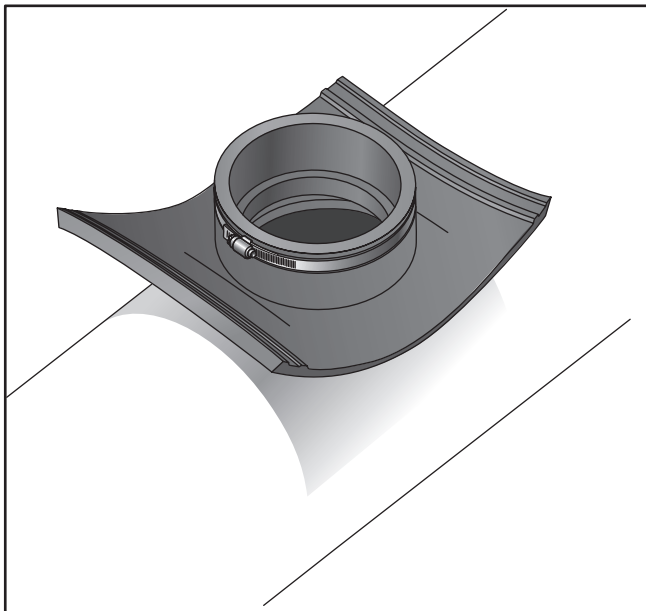
# NDS FLEXIBLE SADDLES



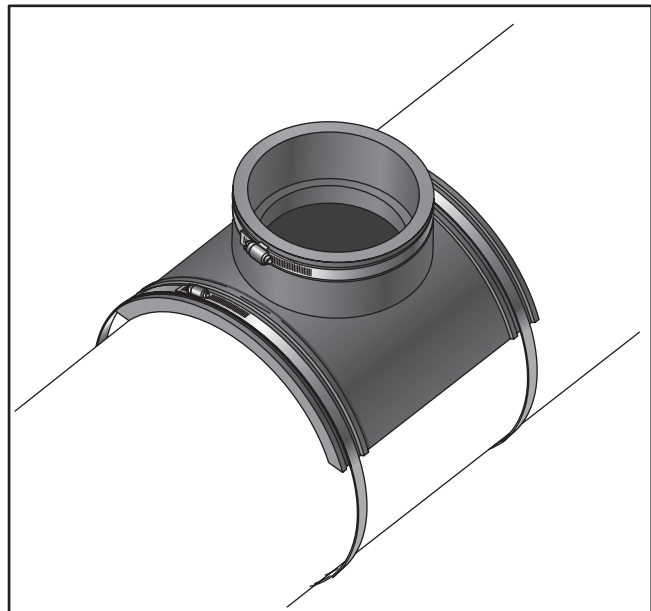
STEP 1: Standard saddle



STEP 2: Invert saddle and press down against the curvature of the pipe to obtain the correct deflection of the skirt as illustrated.



STEP 3: Locate the saddle with the deflected skirt over the tap hole.

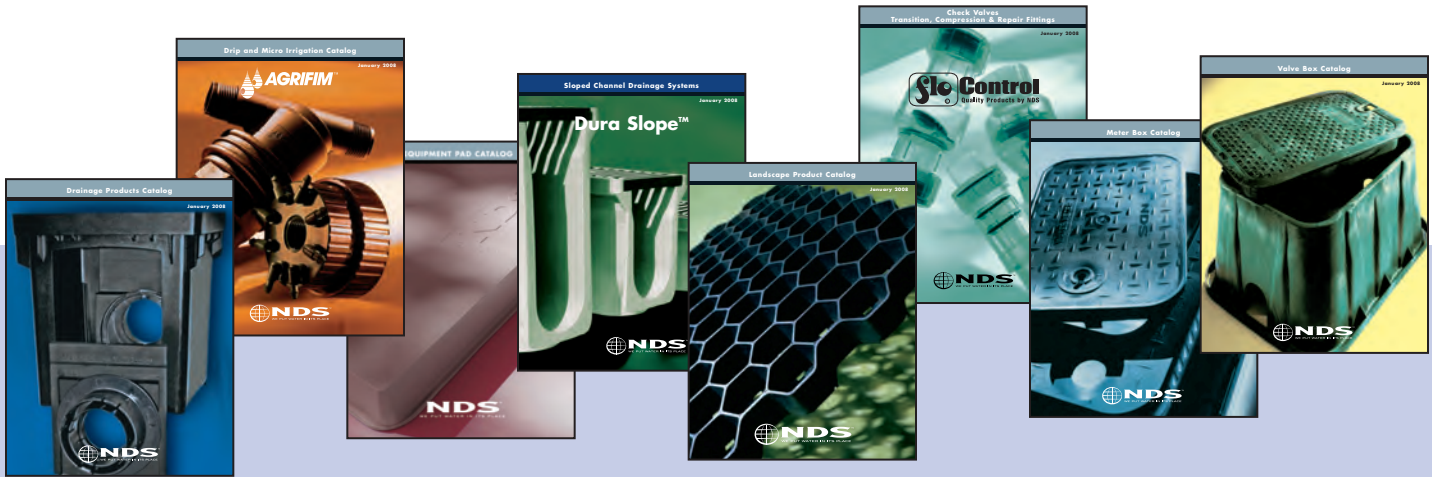


STEP 4: Tighten clamps to a minimum of 60 inch-Lbs torque (5ft-Lbs torque). Bed and backfill according to engineer's specifications.

Note: All dimensions are nominal. All weights are for shipping purposes only. Availability is subject to change.

# MARKETING MATERIALS

NDS provides top of the line marketing materials to promote all of our product lines. From effective point of sale materials, to smart, informational catalogs and manuals, you will find what you are looking for to help support your marketing efforts.



## Catalogs

Also available from NDS:

Drainage • Drip & Micro Irrigation • Equipment Pad • Sloped Channel  
Landscape • Check Valves, Transition, Compression and Repair Fittings • Meter Box • Valve Box



## www.NDSPRO.com

From installation details to online catalogs to educational materials, NDSPRO.com is your one source for all information needed in order to use and specify NDS products.



## Basin Display

An installation display showing a simulated drainage system design with actual product. Size is 24" x 48".



## Banner

A color banner with 4 eyelets.  
Size is 23" x 47"

## TERMS AND CONDITIONS OF SALE

**Terms:** Standard terms are 2% NET 10 days. A 1 1/2% per month (18% per annum) service charge will be added to all past due accounts. All invoices are to be paid in US Currency. Title and risk of loss pass to buyer upon shipment.

**Freight Allowance:** Freight prepaid on orders of \$1000.00 NET or more. Freight prepaid on orders containing only equipment pads of \$1500.00 NET or more. Freight prepaid on flexible couplings only orders of 126 pieces or more. Prepaid freight levels are based on shipments to one location only. It is the responsibility of the customer to determine if his purchase order meets the minimum freight allowance required. NDS reserves the right to select the carrier and point of shipment.

**Canadian Orders:** Freight prepaid on orders of \$1,500.00 (US\$) NET or more. Custom DuraCast only orders freight prepaid on orders of \$2500.00 (US\$) NET or more.

**Errors & Claims:** All claims for shortage in shipment or damaged material must be noted on the "Bill of Lading" and a written request for credit submitted to NDS within 15 days of shipment. NDS responsibility ceases upon delivery to the carrier.

**Returned Goods:** Returned goods will be accepted only after written approval and shipping instructions are received from NDS. A return goods authorization number is required and must be on all cartons, documents, and correspondence. All returns are subject to a 25% restocking charge, freight cost of returned goods (plus "out freight if applicable"). A higher restocking charge may be assessed against any return requiring extraordinary handling costs.

**Minimum Order:** \$50.00 minimum order net billing. A 15% broken box charge will be added for other than full box quantities.

**Limited One Year Warranty:** The liabilities of NDS are limited solely and exclusively to replacement as set forth in our standard "Statement of Warranty", alone and do not include any liability for incidental, consequential or other damage of any kind whatsoever, whether any claim is based upon theories of contract, warranty, negligence or tort and without any limitations and do not include shipping charges, labor, installation or any other losses or expenses incurred in operation of any replacement specialty item or fitting. NDS drainage products are designed to be used for exterior surface drainage only.

**Limited Lifetime Warranty:** NDS warrants to the original owner of its NDS catch basins, grates, channel and Pro Series valve boxes, subject to the conditions set forth in this warranty, that NDS catch basins, grates, channel and Pro Series valve boxes will remain free from manufacturing defects.

All NDS products are guaranteed against defects resulting from faulty workmanship or materials. Claims for labor costs and other expenses required to replace defective products or repair of any damage resulting from the use thereof will not be allowed by NDS. Our liability is limited to replacement of products acknowledged by NDS to be defective.

**Exclusive Warranties and Remedies:** The FOREGOING REMEDIES ARE EXCLUSIVE AND ARE GIVEN AND ACCEPTED IN LIEU OF (I) ANY AND ALL OTHER WARRANTIES, EXPRESSED OR IMPLIED, INCLUDING WITHOUT LIMITATION THE IMPLIED WARRANTIES OF MERCHANTABILITY AND FITNESS FOR PARTICULAR PURPOSE; AND (II) ANY OBLIGATION, LIABILITY, RIGHT, CLAIM OR REMEDY IN CONTRACT OR TORT, WHETHER OR NOT ARISING FROM NDS, INC.'S NEGLIGENCE, ACTUAL OR IMPUTED. The remedies of customer shall be limited to those provided herein to the exclusion of any and all other remedies including, without limitation, incidental or consequential damages. No agreement varying or extending the foregoing warranties or these limitations will be binding on NDS, Inc., unless such is signed in writing by an authorized officer of NDS, Inc.

The liability of NDS, Inc., hereunder shall be limited to restoring to good working order, provided that NDS, Inc., is not required to restore the product to good working order when such failure is due to causes beyond NDS, Inc.'s control, including but not limited to, acts of God, acts of civil or military authority, priorities, strikes, floods, epidemics, war, riots, and other causes that are beyond the manufacturers control.

These provisions are complete and exclusive statements of all terms and conditions between NDS, Inc., and the consumer. These provisions may not be varied, supplemented, qualified or interpreted by any prior course of dealings, written or oral or by trade usage. No NDS, Inc. agent, officer or employee has authority to make any representation, promise or warranty concerning these provisions.



- Catch Basins & Grates
- Channel Drains
- Flo-Well® Stormwater Leaching Systems
- Sewer & Drain Fittings
- Backwater & Diverter Valves
- Flexible Couplings
- Flexible Saddles
- Agrifim Drip Irrigation
- Grass Pavers
- Root Barriers
- Valve & Meter Boxes
- Equipment Pads
- Flo Control Transition Fittings
- Flo Control Check Valves
- Flo Control Ball Valves
- Flo Control Repair Couplings
- Flo Control Saddles

### PARTIAL CLIENT LIST

The White House  
Los Angeles Country Club  
Pebble Beach  
Cypress Point  
Spyglass Hill  
PGA West Stadium Golf Course  
Princeville Golf Course  
Ritz Carlton  
Santa Barbara Zoo

Sheraton Hotels  
Sherwood Country Club  
Soldier Field  
Del Webb & Sun City Country Clubs  
Westin Hotels  
Riviera Country Club  
Buchar Gardens  
Disney World  
Disneyland

Florida University  
Harbortown Golf Links  
Hyatt Grand Champions  
La Quinta Resort  
Marriott Hotels  
MGM Grand Hotel & Theme Park  
Mirage Hotel  
Jack La Lane Athletic Clubs  
Olympic Training Center

Address/Telephone  
P.O. Box 339 • 851 N. Harvard Avenue  
Lindsay, CA 93247  
Phone: 800-726-1994  
Fax: 800-726-1998  
International Phone: 559-562-9888  
International Fax: 559-562-4488  
e-mail: NDS@NDSPRO.com

[www.NDSPRO.com](http://www.NDSPRO.com)

FOR TECHNICAL INFORMATION, CONTACT:

Technical Services  
(888) 825-4716

TechService@NDSPRO.com

Regional Warehouses:

- Lindsay, CA
- Fresno, CA
- Mineola, TX
- Powder Springs, GA
- Philadelphia, PA
- Puerto Rico
- Seattle, WA