

Ready-To-Connect

LATTNER

Steambath Generators

SteamEase

Keep your members coming back

For clubs of every size

Starting with the reliable 1½ HP to provide steam for 600 cu. ft. of steam room space. Other models for up to 2800 cu. ft. steam rooms.

The Lattner SteamEase operates economically and fits neatly into small spaces. You get all the benefits of heavy-duty industrial design and specifications at a price that compares to some residential installations.



Member Health Benefits

- Helps respiration
- Improves skin glow
- Great after a workout
- Safe, natural high

Easy-To-Operate Steam Generator

How It Works

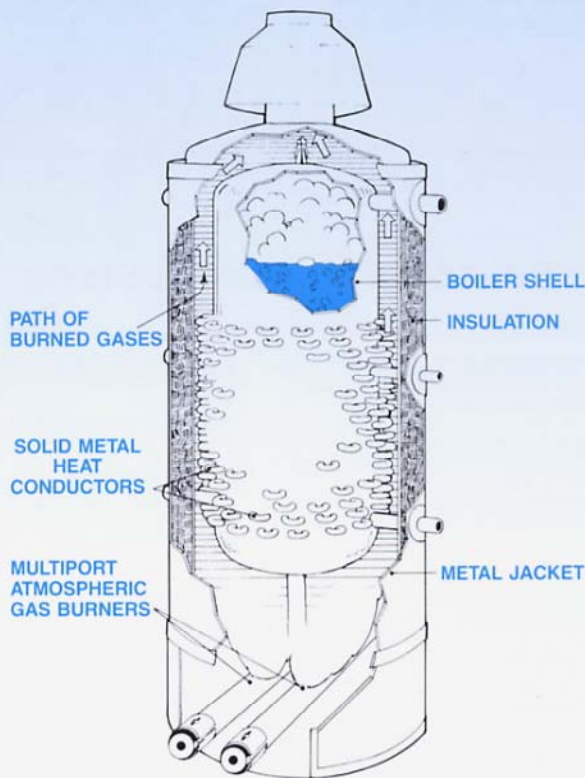
Boiler vessel is located inside the heavily insulated jacket. Numerous solid U-shaped heat conductors are welded to the surface of the vessel.

The heat from the burners strikes the lower head, then travels up the sides of the shell where the U loops intercept and baffle the heat, causing a scrubbing action that extracts the heat from the fire and transfers it to the water inside.

Flue gases then pass over the top of the vessel and out the stack.

■ Easy maintenance

Simple engineered designs are exempt from many state and local regulations. Handhole openings allow for internal inspection and easy cleaning. **There are no tubes that plug up or cast iron sections that crack and leak.**



■ Easy on energy

Your club will benefit over the entire life cycle of your Lattner SteamEase. Everyday savings in energy costs, plus trouble-free service savings on parts and downtime. Natural gas units are the most economical generators on the market today.

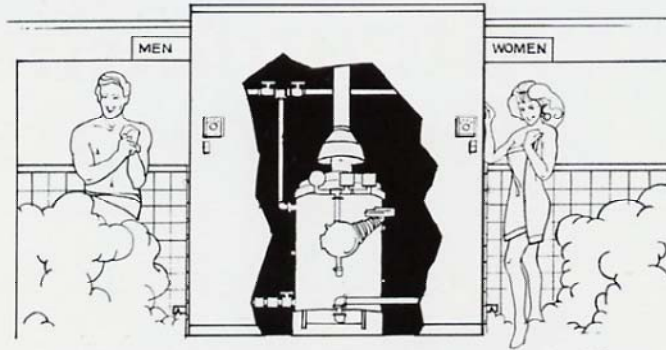
■ Easy installation

No engineering required on job. Installation can be made and top performance obtained by local plumbing and heating contractors.

■ Easy on your mind

Safe, reliable steam generators proven in thousands of installations since 1918. Over 80 years of safety. UL listed and labeled.

Simple, Worry-free Installation



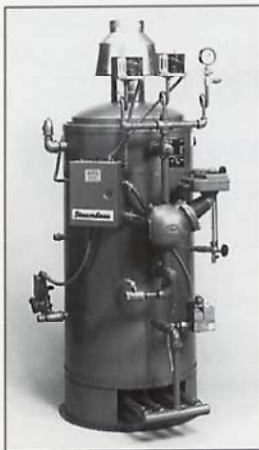
Installation simple & worry-free. Only one generator required; Gas or Electric. For single or multiple room applications.

Complete Packages

Each boiler is completely automatic with pressure controls, water level controls and two low-water cut-offs. All joints and seams are welded, and hydrostatically tested. All boilers completely assembled at factory — only trim and controls to be reconnected during installation. Options include: automatic room temperature controls, timers, steam flow valves, and automatic blowdown valve for bottom of generator.

Last Longer • Fewer Repairs

Specially designed for hard service in steam rooms where 100 percent make-up water is required. No-tube design eliminates plugging and burnouts. No sections to crack as in cast iron models. Count on many years of long, hard service.



Lattner SteamEase Gas Steam Bath Generators; 1.5 HP to 7 HP • UL & ASME CODE • Tubeless Design • Easy Maintenance • 3/8" Heavy Duty Pressure Vessel • HE Miniature Style



Lattner SteamEase Electric Steam Bath Generator; 9 KW to 60 KW • Low Watt Density, Incoloy Heating Elements • NATIONAL BOARD • U.L. & ASME CODE.

Boiler Specifications/Sizing

GAS

MODEL	1½	3	5	7
BTU/HR INPUT	80,000	160,000	255,000	325,000
HEIGHT	4'-2"	4'-6"	5'-7"	6'-11"
WIDTH	23"	30"	30"	39"
DEPTH	32"	39"	42"	47"
WEIGHT	450	700	775	1450
MAX. CU. FT. OF STEAM ROOM	600	1200	2000	2800

ELECTRIC

MODEL	.9	1.5	2.4	3.0	4.8	6.0
KW	9	15	24	30	48	60
VOLTAGE	208,240,480			1 or 3 phase		
LENGTH	43"	43"	38"	38"	43"	43"
WIDTH	27"	27"	29"	29"	29"	29"
HEIGHT	29"	29"	29"	29"	32"	32"
WEIGHT	425	425	500	500	675	675
MAX. CU. FT. OF STEAM ROOM	360	600	960	1200	1920	2400

Dimensions L.W.H. do not correspond to vertical boiler literature.

Larger Units Available • Specifications subject to change

LATTNER

Lattner Boiler Mfg. Co.

800-345-1527
319-366-0778

1411 9th Street SW, P.O. Box 1527
Cedar Rapids, Iowa 52406, U.S.A.
FAX: 319-366-0770
E-MAIL: info@lattner.com
www.lattner.com

Bulletin No. SB-201-04