

ONEAC® ONePlus™ Series UPS (250 - 1000 VA): For some, conventional UPSs are “good enough.” But many find ordinary protection measures inadequate. Others face performance expectations with no tolerance for downtime. ON Series Power Conditioned UPSs are engineered to satisfy these demanding applications.

Ultimate assurance of system reliability

All UPS makers acknowledge the broad range of power disturbances that compromise system reliability. And all address them to some degree. But here’s the difference—ONEAC’s proprietary power conditioning technology eliminates power problems entirely. Attention to detail and a front end isolation transformer protects our UPS system as well as your critical load. Providing a level of protection that even the highest quality surge suppressor and filter technology cannot match.

Exceptionally dependable battery backup

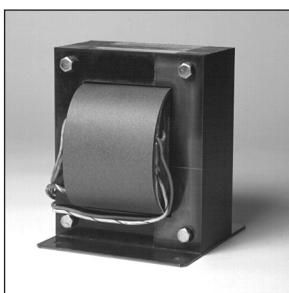
We start with premium quality batteries. Thermally isolate them for maximum life. We employ a unique charging circuitry attuned to the specific battery characteristics of each model; to speed recovery and minimize stress on batteries. Automatic monitoring of battery condition ensures readiness. And our user replaceable battery pack allows rapid replacement without downtime, and without risk.

Portable dedicated line

Incorporating low-impedance power conditioning and isolated ground, ONePlus creates the "ONEAC Portable Dedicated Line." Unlike conventional dedicated lines, simple plug & play installation and portability mean you’ll save time and money – now and in the future.

Proven durability, backed by a 5-year warranty

The robust design of an ONEAC UPS is impervious to the harshest electrical environments. Designed and manufactured under ISO 9001 quality procedures, ONePlus are exceptionally reliable. No surprise, then, that we back our UPSs with greater confidence—5 years on all power and control systems, 2 years on the battery sub-system.



ONEAC’s low-impedance, isolation transformer provides a level of protection superior to surge suppressor and filter based systems — providing greater assurance of system reliability.



- **Line-interactive, power conditioned topology:** eliminates all power contaminants
- **Comprehensive front-panel display:** provides real-time understanding of load and runtime
- **Front-access, user-replaceable batteries:** quickly change batteries without dropping the load—no service tech or tools needed
- **Small footprint and quiet operation:** fits unobtrusively into most any environment
- **Includes MopUPS® Express UPS software:** for automated system shutdown
- **USB and RS232 communications ports:** add flexibility
- **Low-impedance isolation transformer:** provides the highest level of protection against transients
- **ONEGROUND® technology:** solves ground loop problems
- **True sine wave output:** ensures clean power
- **Voltage regulation with buck and boost:** compensates for a wide range of voltage variations and conserves batteries
- **Audible alarm:** provides fault warnings (with silencing feature)
- **Cold starts:** so systems can be tested before electrical wiring is complete
- **Safety approvals:** UL, cUL
- **Manufactured under ISO 9001:** assures consistent quality and performance.
- **5-Year warranty:** (2-year on batteries); the best assurance of product quality and performance in the industry
- **Free 24-hour technical support**

ONePlus Series UPS: Specifications

Power Conditioning

ONEAC's unique power conditioning architecture provides superior protection against the full range of power line disturbances. Components include:

Full output isolation: ONEAC's proprietary transformer design incorporates power conditioning magnetics and voltage regulation and conversion magnetics in a single compact unit. Providing superior protection against lightning and other high energy surges.

Virtual Kelvin Ground®: Eliminates the full spectrum of conducted power line noise (from 50 kHz to 10 MHz) in all modes, reduces the effect of electrostatic discharge (ESD) and provides an exceptionally clean signal reference ground for electronic systems.

ONEGROUND technology: Diverts transient errant current from flowing through ground circuit leads of datacom cables—minimizing the effect of ground potential shifts that can effect the performance of interconnected systems.

Communications

Supports both USB and RS232 communications protocols. MopUPS Express Communications Software (and USB cable) are included for UPS and battery monitoring and management.

Approvals

120 VAC models are FCC Class A certified and listed under UL 1778 and CSA22.2 safety standards.

Performance Characteristics

Nominal input voltage: 120 VAC, 60 Hz

Surge voltage withstand capability: ANSI/IEEE C62.41 Category A&B, 6 kV/200 & 500 Amp, 100 kHz ringwave

Surge voltage let-through (max): Less than 10 V Normal mode (L-N), less than 0.5 V Common mode (N-G) when subjected to 6 kV ANSI/IEEE C62.41 Cat. A

Normal & common mode clamping response time: Instantaneous

Transfer time (typ): 6 ms

On battery output voltage: Sine wave

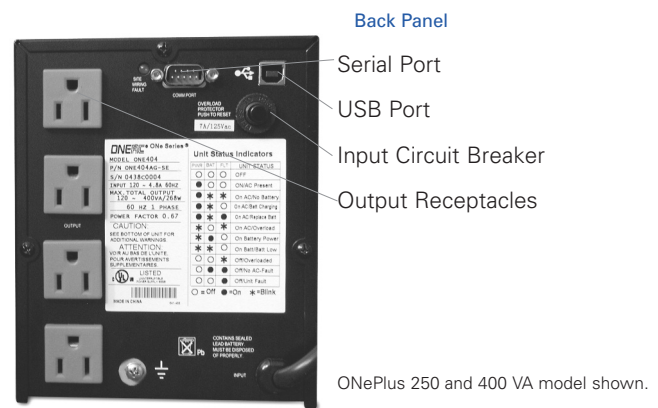
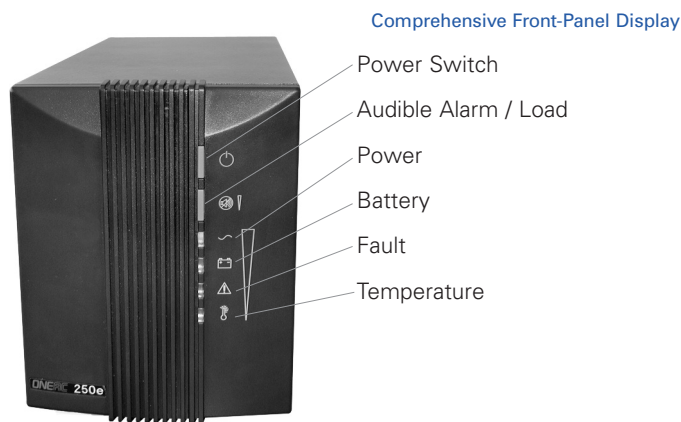
Buck and boost: maintains output voltage between 101 and 132 VAC while input voltage varies between 89 and 152 VAC.

Load power factor range (crest factor): UPS .65 to 1.0 (3)

Batteries: Sealed, maintenance-free lead acid with a 2-4 year typical lifetime, user replaceable

Recharge time to 90% available capacity: 3-6 hours after full discharge to cut-off

All units provide thermal isolation for battery pack.



60 Hz MODELS

	ONePLUS250	ONePLUS400	ONePLUS600	ONePLUS1000
Part number	ONE254AG-SE	ONE404AG-SE	ONE604AG-SE	ONE1004AG-SE
Maximum capacity (volt-amps, watts)	250/167	400/268	600/402	1000/670
Batteries	(1) 7 AH	(1) 9 AH	(2) 7 AH	(3) 7 AH
Typical runtime by system load:	<i>Due to application specific conditions, your actual run time may be different.</i>			
@ half load/full load (min.)	22/8	12/5	12/5	12/5
Communication software	MopUPS Express	MopUPS Express	MopUPS Express	MopUPS Express
Maximum dimensions - HxWxD - in.	7.1 x 5.5 x 14.3	7.1 x 5.5 x 15.4	9.3 x 7.1 x 15.0	9.3 x 7.1 x 15.0
HxWxD - (cm)	18 x 14 x 36.2	18 x 14 x 39	23.5 x 18 x 38	23.5 x 18 x 38
Net weight — lbs. (kg)	26 (11.9)	27 (12.1)	53 (24.2)	59 (27)
Shipping weight — lbs. (kg)	28 (12.7)	28.6 (13)	57 (25.9)	63 (28.5)
Input connector (6 ft. attached cord)	5-15P	5-15P	5-15P	5-15P
Output receptacles (orange**)	(4) 5-15R	(4) 5-15R	(8) 5-15R	(8) 5-20R (T*)

* "T-slot" output connectors will accept either 5-15P or 5-20P plugs.

** The ONePLUS UPS is an acceptable alternative to a dedicated isolated ground circuit.

ONEAC, ONEGROUND, MopUPS and Virtual Kelvin Ground are registered trademarks and ONePlus is a trademark of ONEAC. All other trademarks are the property of their respective companies.

ONEAC is a UL/BSI registered corporation — Certification No. A2900



(800) 327 8801 OPT. 2 in USA AND CANADA

27944 N. Bradley Road, Libertyville, IL 60048 Phone 847 816-6000 FAX 847 680-5124

+44 (0) 2380 610311 in UK AND EUROPE

George Curl Way, Southampton, Hampshire SO18 2RY UK FAX +44 (0) 2380 610852